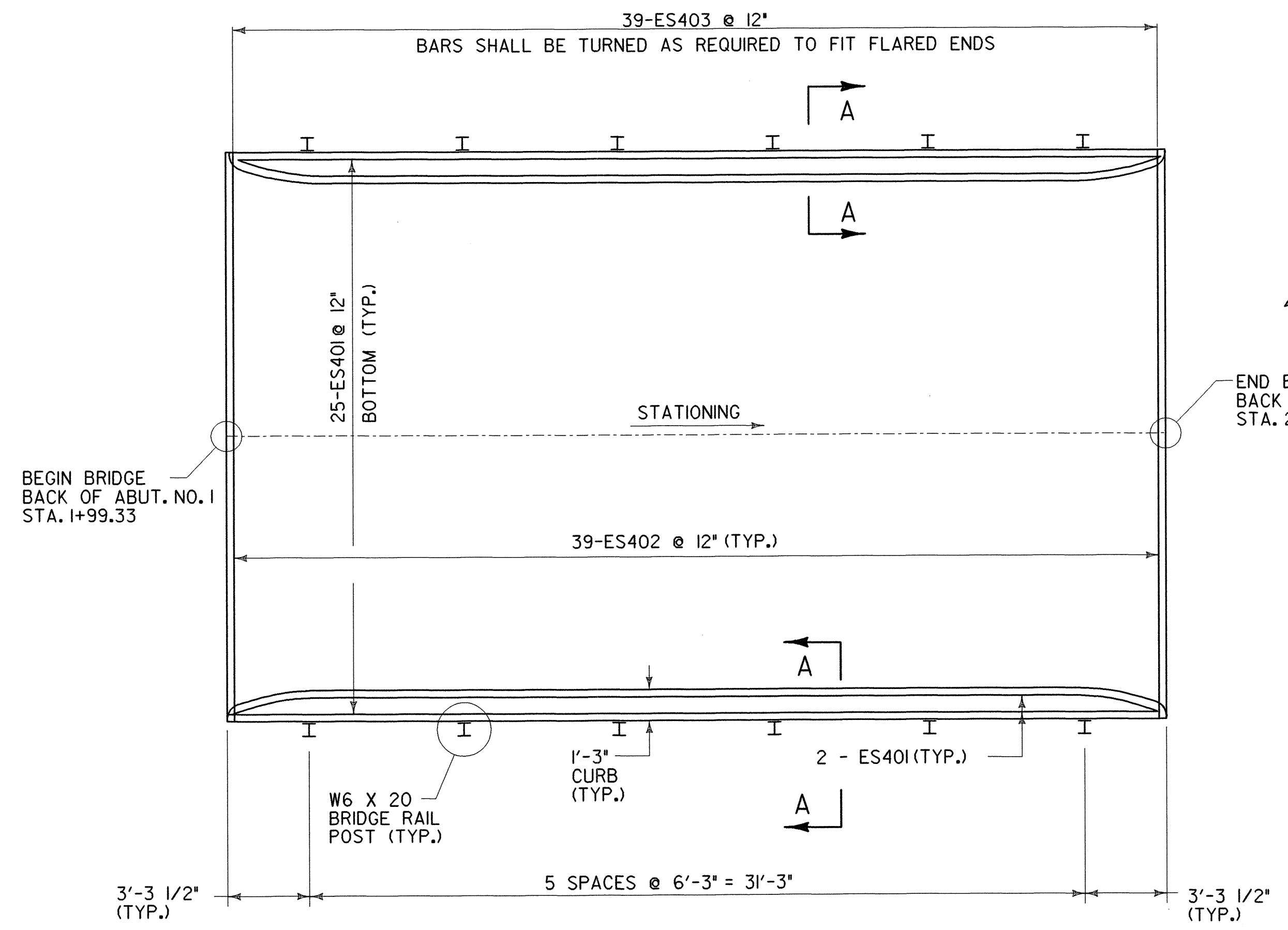
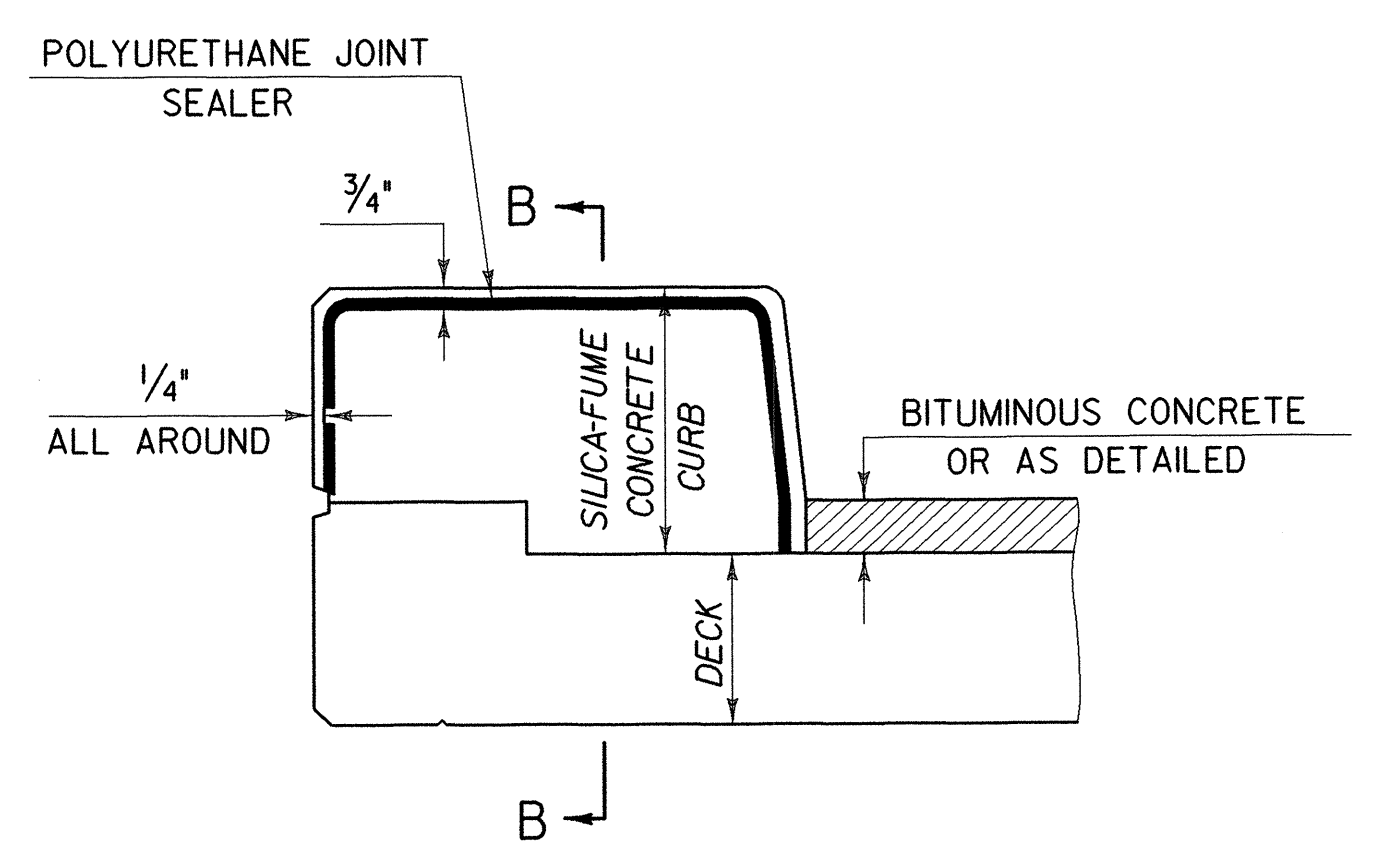


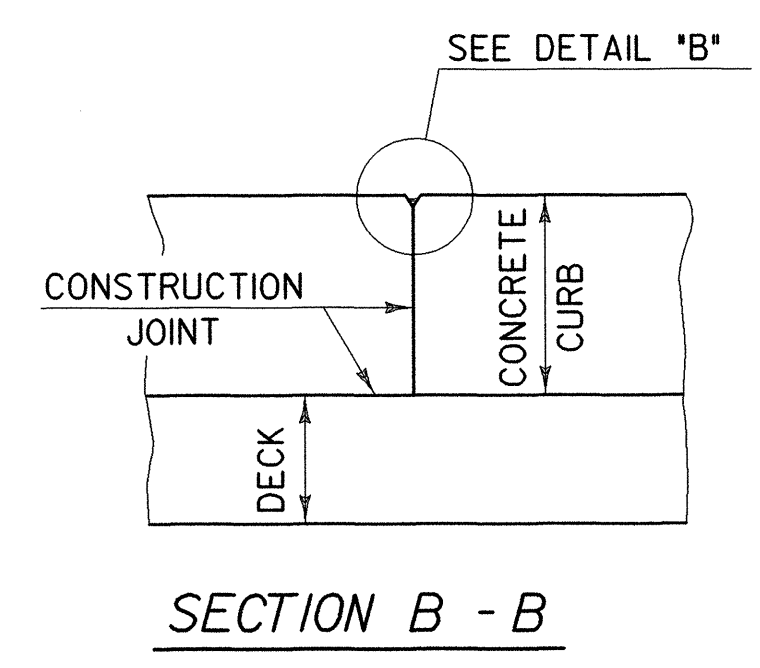
8/15/99
 CHECKED BY: *[Signature]*
 DESIGNED BY: *[Signature]*
 IN CHARGE OF: *[Signature]*



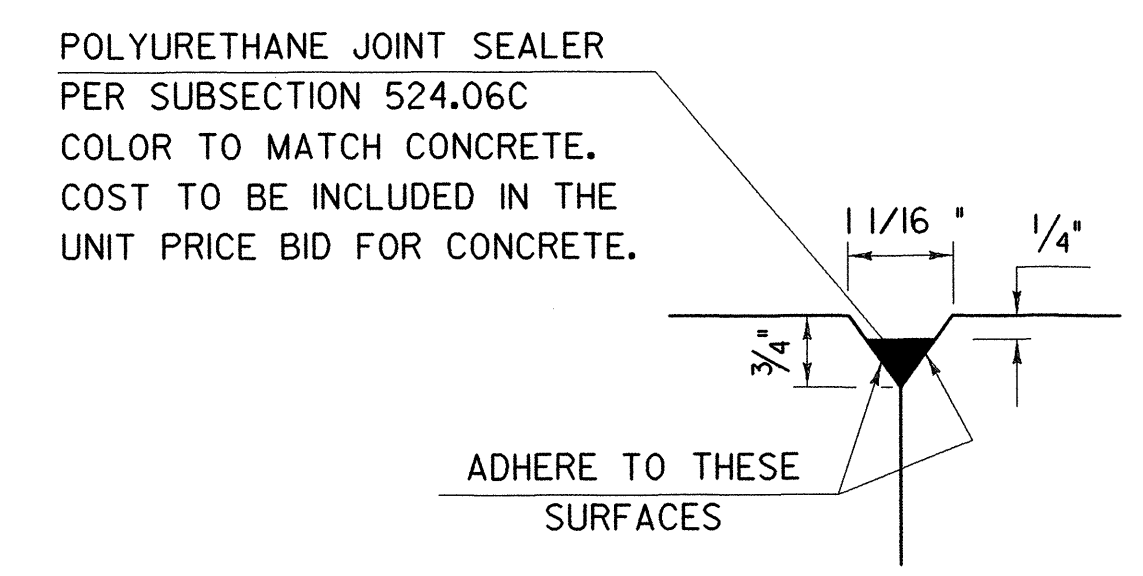
PLAN OVERLAY REINFORCING
1/4" = 1'-0"



TYPICAL SECTION THROUGH CONCRETE SIDEWALK CONSTRUCTION JOINT

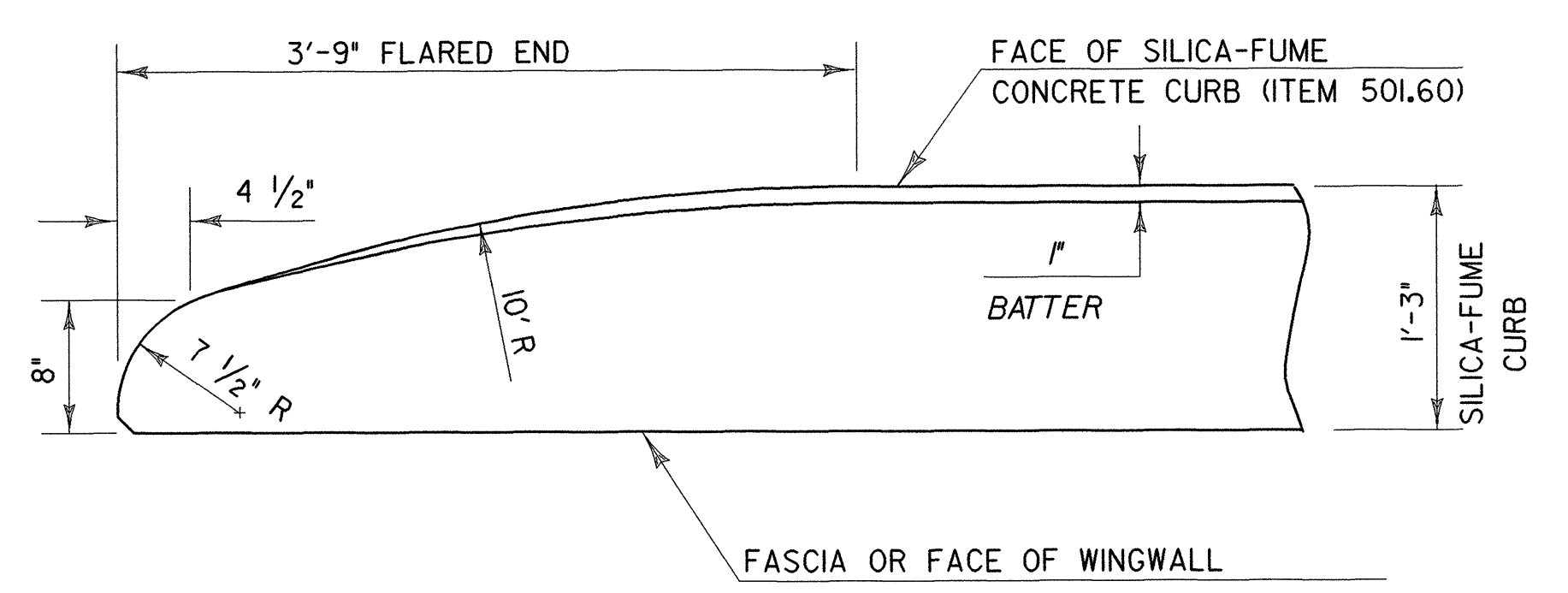
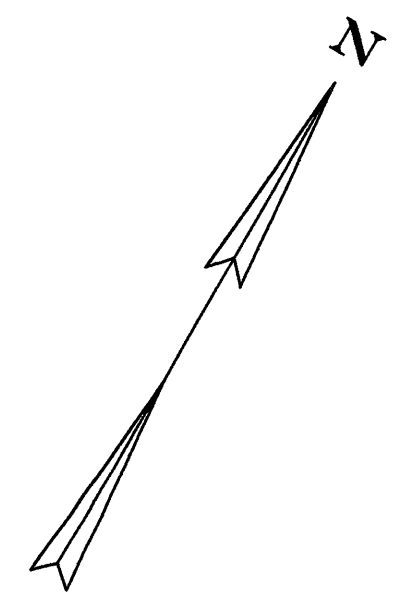


SECTION B - B



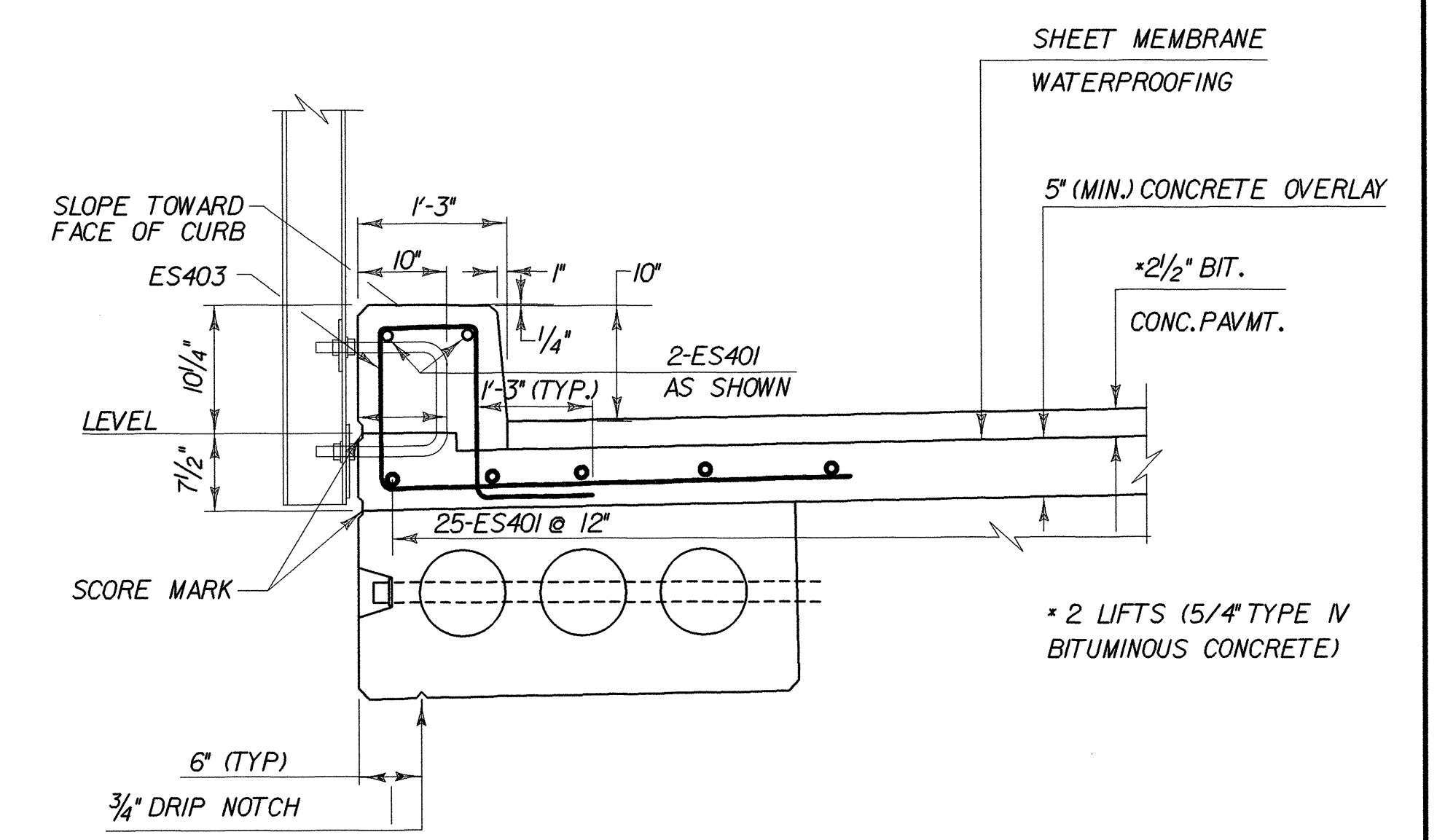
DETAIL "B"

- NOTES:
1. POLYURETHANE MEMBRANE AND BLAST CLEANING SHALL BE INCLUDED IN THE UNIT PRICE BID FOR SHEET MEMBRANE WATERPROOFING.
 2. SHEET MEMBRANE WATERPROOFING SHALL EXTEND TO FACE OF CURB.
 3. "E" DENOTES EPOXY COATED BARS.
 4. CONSTRUCTION JOINTS IN THE CURB SHALL BE PROVIDED AS SHOWN ABOVE. JOINTS SHALL BE SPACED A MAXIMUM OF 15'-0" CENTER TO CENTER AND SHALL BE 1'-6" MINIMUM FROM THE CENTER OF THE NEAREST BRIDGE RAIL POST. CONCRETE SHALL BE PLACED IN ALTERNATING SECTIONS WITH A MINIMUM OF 48 HOURS DELAY BETWEEN ADJACENT POURS.
 5. LONGITUDINAL REINFORCING SHALL PASS THROUGH CONCRETE CURB CONSTRUCTION JOINTS.
 6. ALL EPOXY COATED STEEL TO BE CUT IN THE FIELD IS TO BE SAW CUT AND THE EXPOSED END IS TO BE TREATED AS PER SECTION 507.04.



FLARED END DETAIL FOR 1'-3" CURB

CURB REINFORCING STIRRUP BARS SHALL BE TURNED AS REQUIRED TO FIT FLARED ENDS.



SECTION A-A

STOP DRIP NOTCHES 5'-0" FROM ENDS OF UNIT AND OUTLET AT 45° TO FASCIA

UNIT #1 SHOWN. UNIT #6 SAME EXCEPT OPPOSITE HAND STRAND AND REINFORCING STEEL LOCATIONS SAME AS INTERMEDIATE VOIDED SLABS

NTS

RE-ADVERTISED

PROJECT NO.

BHO 1445 (28)

Greenman-Pederson CONSULTING ENGINEERS GPI <small>55 Monument Ave. Bennington, VT, 05201</small>	LINCOLN BRIDGE 13 OVER COTA BROOK			
	PRESTRESS & MISC. DETAILS SHEET			
DRAWING NO. MD-2	SCALE: AS SHOWN	DATE: DEC., 1999	SHEET NO. 10 OF 13	