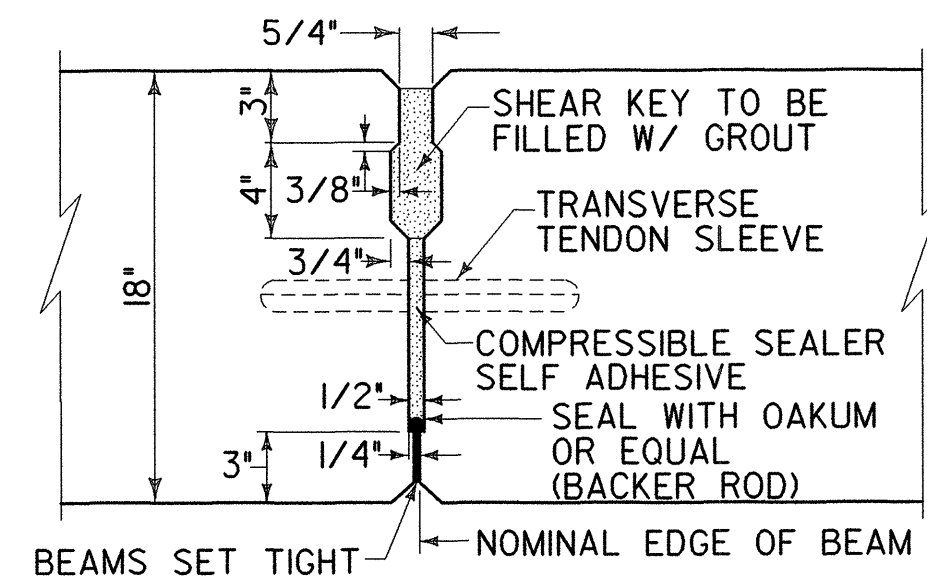


8 FILES

DRAFTED BY: *M. J. ...*

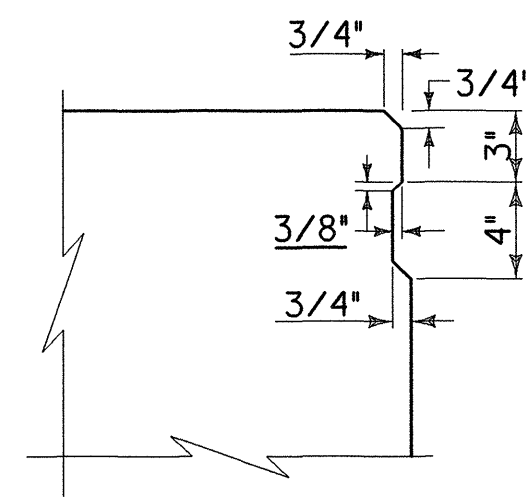
DESIGNED BY: *John ...*

IN CHARGE OF: *James ...*



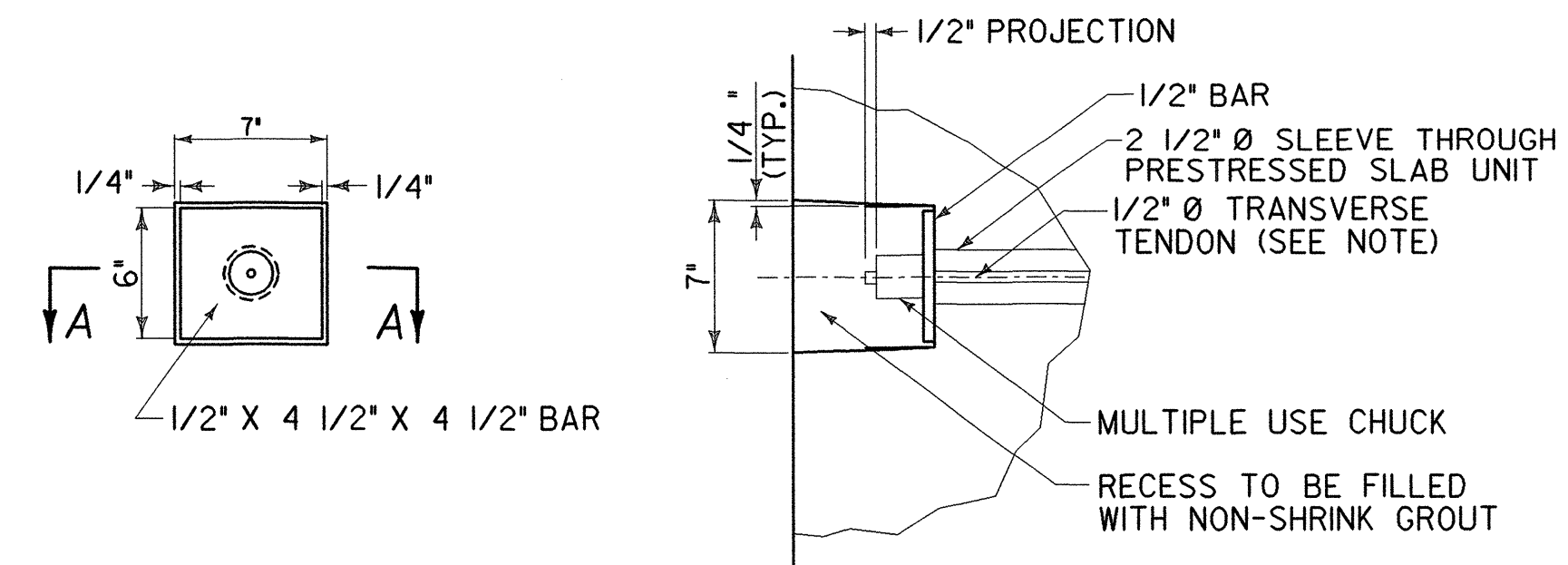
**SHEAR KEY SECTION FOR VOIDED SLAB**

NTS



**SHEAR KEY DETAIL FOR VOIDED SLAB**

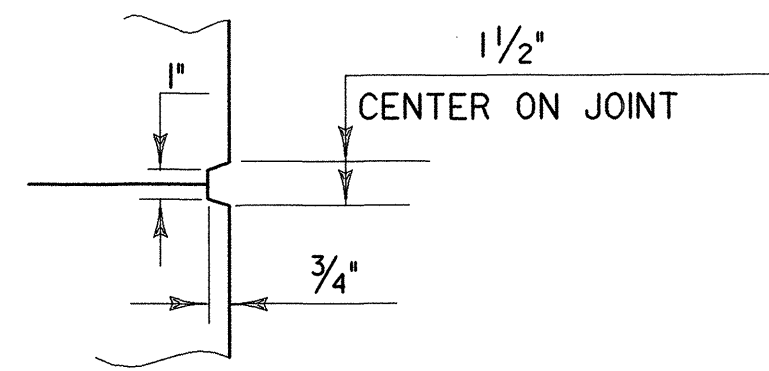
NTS



**1/2" Ø TRANSVERSE TENDON DETAIL**

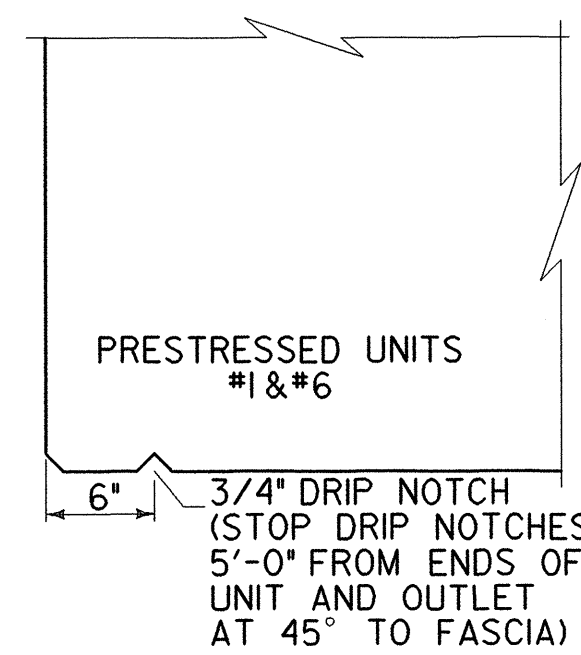
NTS

TRANSVERSE TIES SHALL BE COVERED BY SEAMLESS POLYPROPYLENE SHEATH (WITH CORROSION INHIBITOR GREASE BETWEEN SHEATH AND STRAND) FOR THE LENGTH OF STRAND, EXCEPT AT ANCHORAGE LOCATIONS. TIES SHALL BE TENSIONED TO 30 KIIPS. THE 1/2" BAR SHALL CONFORM TO AASHTO M270 GRADE 36 GALVANIZED AFTER FABRICATION. ACCORDING TO AASHTO M232. THE CHUCK SHALL ALSO BE GALVANIZED PER AASHTO M232.



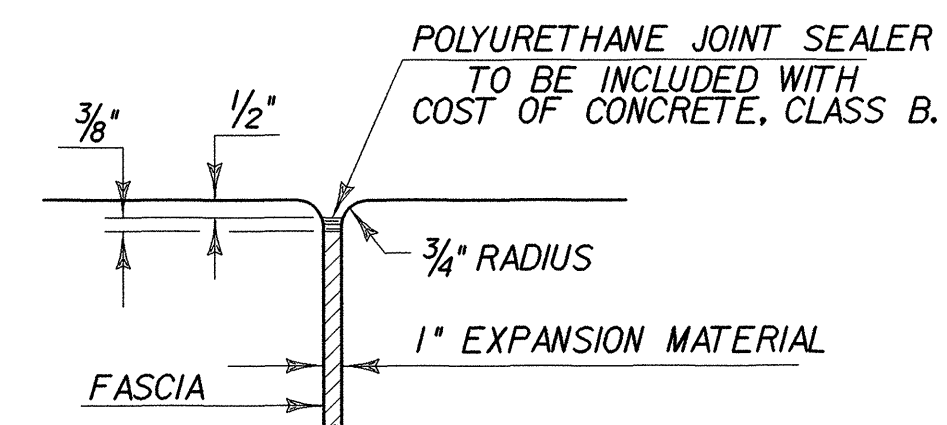
**SCORE MARK DETAIL**

NTS



**DRIP NOTCH DETAIL**

NTS



**JOINT BETWEEN FASCIA AND WINGWALL**

NTS

RE-ADVERTISED

PROJECT NO.

BHO 1445 (28)

Greenman-Pedersen  
CONSULTING ENGINEERS

**GPI**

55 Monument Ave.  
Bennington, VT, 05201

LINCOLN BRIDGE 13  
OVER COTA BROOK

**PRESTRESS & MISC.  
DETAILS SHEET**

DRAWING NO. MD-1	SCALE AS SHOWN	DATE DEC., 1999	SHEET NO. 9 OF 13
---------------------	-------------------	--------------------	----------------------