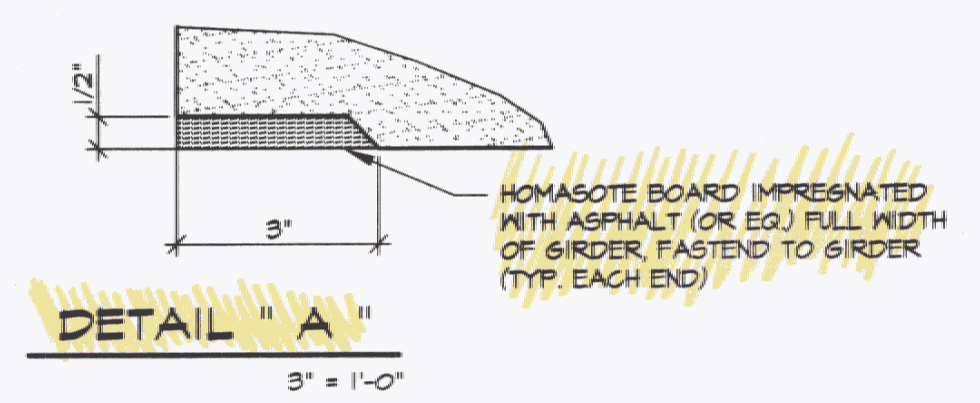
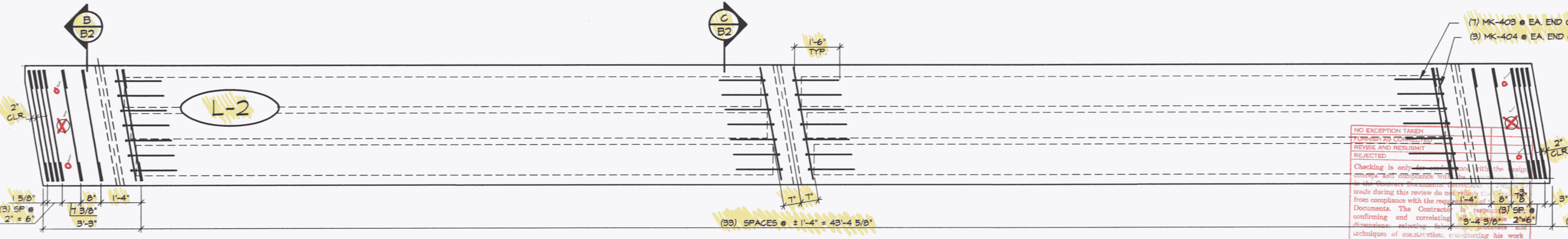


1 DIMENSIONAL PLAN
B2



DETAIL "A"
3' x 1'-0"

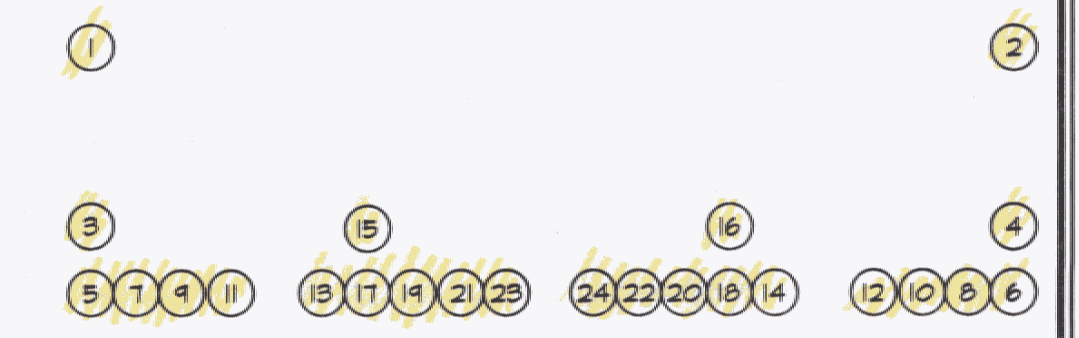


2 REINFORCING PLAN
B2

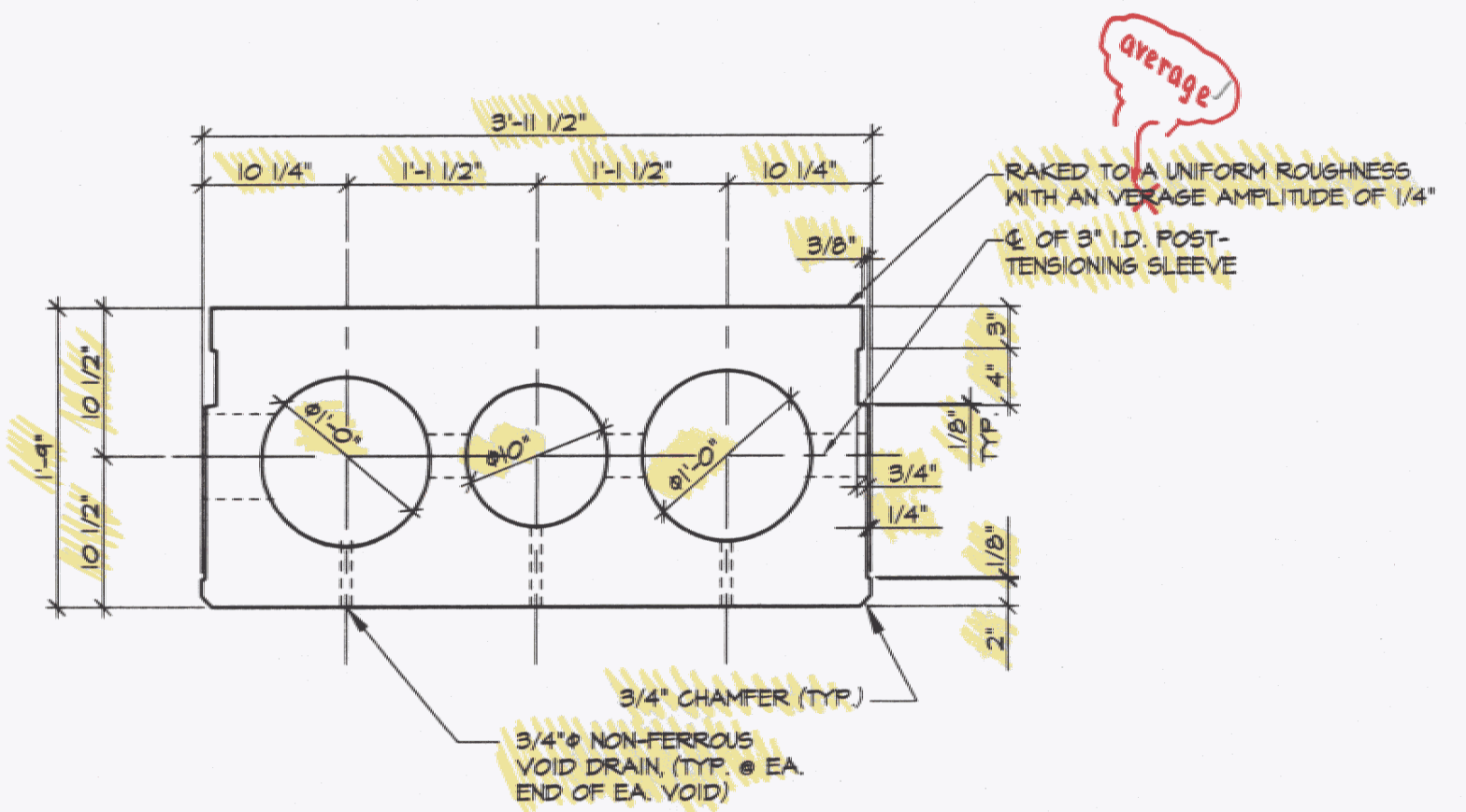
NO EXCEPTION TAKEN
FOR THIS DOCUMENT
REVISE AND RESUBMIT
REJECTED.
Checking is only for compliance with the requirements of the contract documents. The Contractor is responsible for confirming and correlating all dimensions, quantities, and materials with the contract documents and the techniques of construction, coordinating his work with that of all other trades, and performing his work in a safe and satisfactory manner.
LAWES CONSULTING ENGINEERS, INC.
Date: _____ By: _____

SHOP NOTE:
ADJUST REINFORCING AS REQD. TO CLEAR POST-TENSIONING AND ANCHOR SLEEVES.

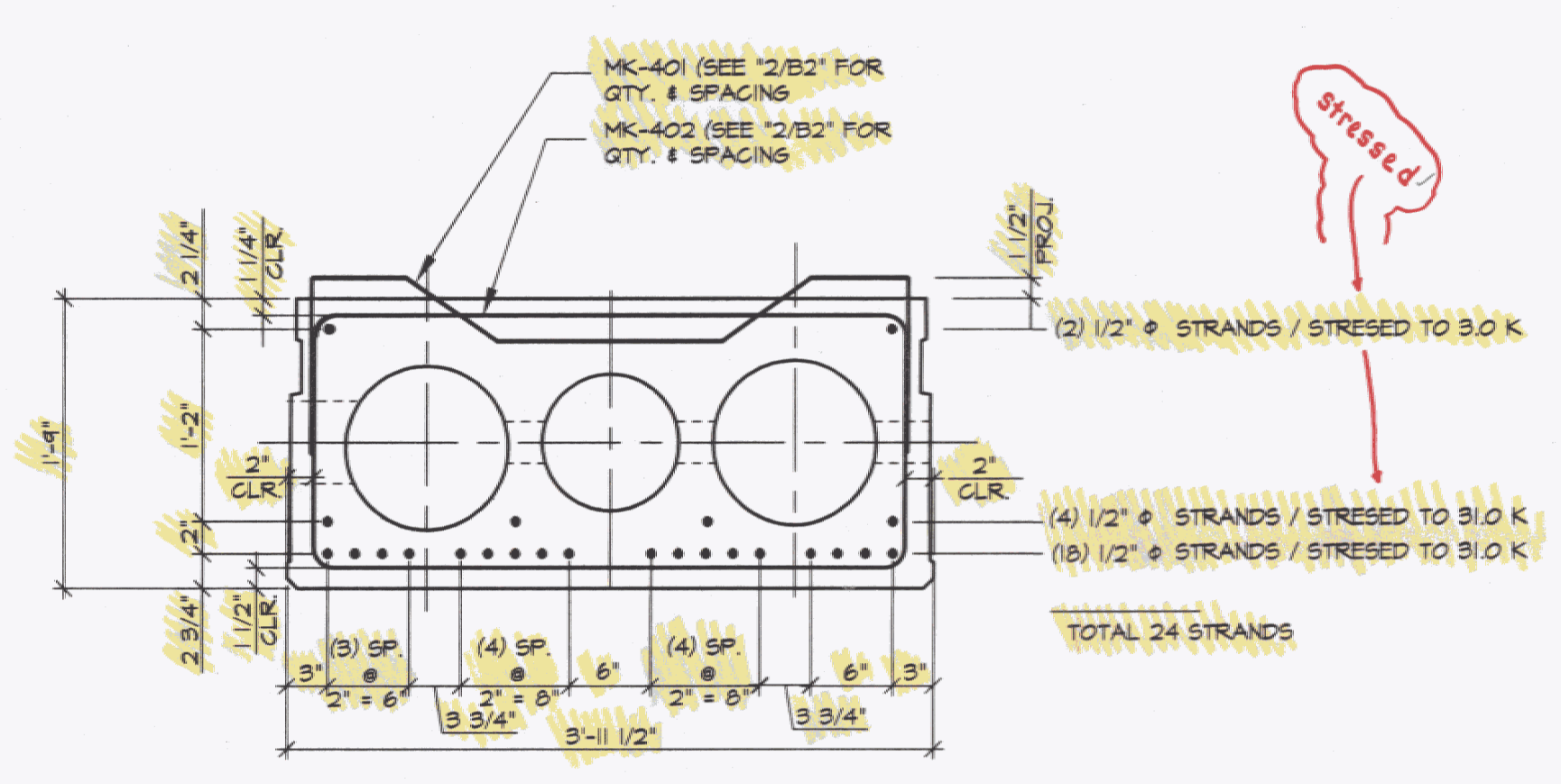
RECEIVED
SEP - 9 1998
LAWES
CONSULTING ENGINEERS, INC.



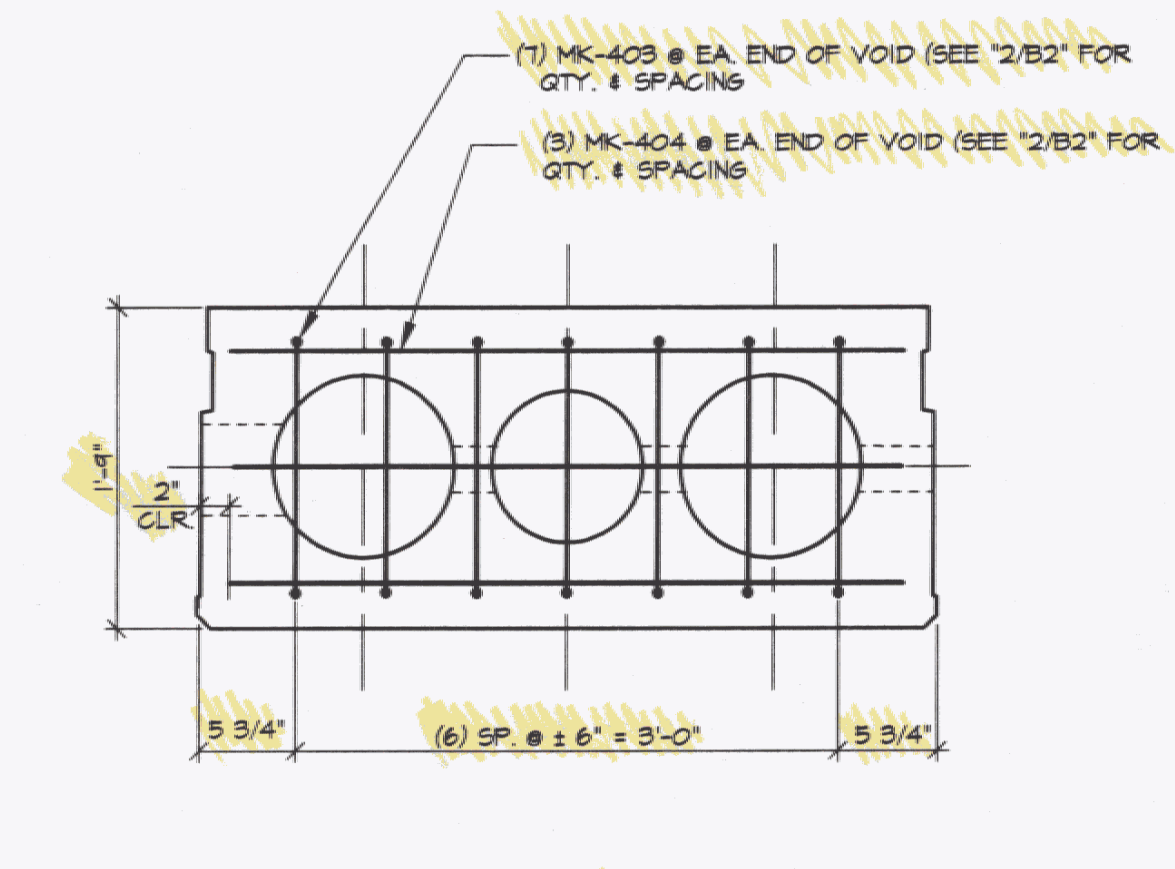
DETENSIONING SCHEDULE
N.T.S.



A DIMENSIONAL SECTION
B2



B REINFORCING SECTION
B2



C REINFORCING SECTION @ END OF VOID
B2

MARK: L-2	QTY: 4	WT./TONS 16.28	CU. YDS. 8.04
MATERIAL LIST / UNIT			
ITEM	MARK	DESCRIPTION	QTY.
1	401	#4 BENT BAR (EPOXY COATED)	46
2	402	#4 BENT BAR (EPOXY COATED)	46
3	403	#4 BENT BAR (EPOXY COATED)	28
4	404	#4 BENT BAR (EPOXY COATED)	12
5			
6			
7			
8			
9			
10		10" x 2'-1 1/4" VOID	2
11		12" x 2'-1 1/4" VOID	4
12			
13			
14			
15			
16			
17			
18		3/4" NON-FERROUS VOID DRAIN	12
19		1/2" STRAND LIFTING LOOPS (SET OF 2 LOOPS)	4
20			

RECEIVED
OK'D BY PMT OK'D BY SLM
SEP 16 1998
RESUBMIT _____ APPROVED AS NOTED
BY JBM/PMT DATE 9-18-98

STATE OF VERMONT AGENCY OF TRANSPORTATION	DRAWN: S. PETROSYAN DESIGNED: _____ CHECKED: _____ APPROVED: _____	J.P. CARRARA & SONS INC. Precast & Prestress Manufacturer 116 MOOREBURY, VERMONT 05753 Phone: (802) 388-6361 Fax: (802) 388-9010 Double-Tees Hollow-Core Plank Flat Panels	Contractor Name: WINTERSET, INC. BOX 966 LYNDONVILLE, VT 05851	Project Name: TOWN OF LOWELL ROUTE TH2, BRIDGE # 9 TOWN OF LOWELL, VT P/S VOIDED SLAB DETAILS	SCALE: NOTED JOB #: 23065-98 DATE: 8-9-98 SHEET #: B 2
	NO. DATE REVISION				