

678.23 WIRED CONDUIT (50 mm DIA. - SCHEDULE 40)

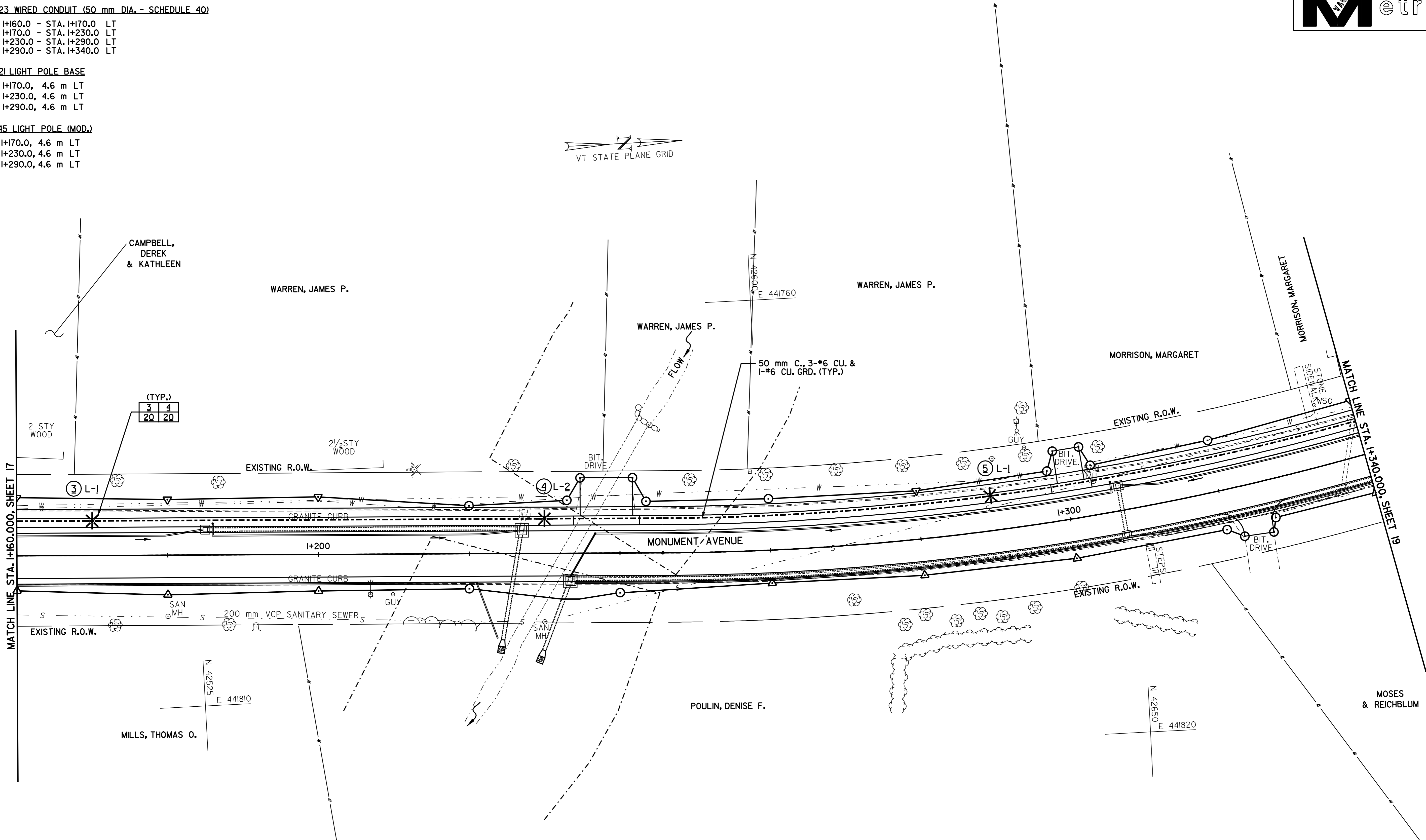
STA. I+160.0 - STA. I+170.0 LT  
 STA. I+170.0 - STA. I+230.0 LT  
 STA. I+230.0 - STA. I+290.0 LT  
 STA. I+290.0 - STA. I+340.0 LT

679.21 LIGHT POLE BASE

STA. I+170.0, 4.6 m LT  
 STA. I+230.0, 4.6 m LT  
 STA. I+290.0, 4.6 m LT

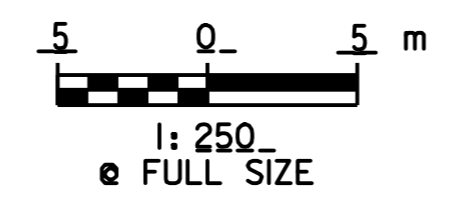
679.45 LIGHT POLE (MOD.)

STA. I+170.0, 4.6 m LT  
 STA. I+230.0, 4.6 m LT  
 STA. I+290.0, 4.6 m LT



NEW STREET LIGHTING LEGEND	
	LIGHT POLE
	CONDUIT
	JUNCTION BOX
	CONDUIT SLEEVE
	POWER STANCHION
	LIGHT POLE NUMBER
	L-1 CIRCUIT NUMBER
	1 20 DETAIL NUMBER ON SHEET NUMBER

DATUM	
VERTICAL	N/A
HORIZONTAL	NAD_83_(1996)



# UTILITY PLAN SHEET # 2

## VERMONT AGENCY OF TRANSPORTATION

<b>CLOUGH, HARBOUR &amp; ASSOCIATES</b> <small>ENGINEERS, SURVEYORS, PLANNERS &amp; LANDSCAPE ARCHITECTS</small> <small>WINNERS CIRCLE ALBANY, NEW YORK, 02208</small>	PROJECT NAME: <u>OLD BENNINGTON</u>	PLOT DATE: 05-MAY-2008 14
	PROJECT NUMBER: STP 1400(5)	DRAWN BY: <u>C.A.K.</u>
	FILE NAME: /pave/97d228/p97d228.dgn	CHECKED BY: <u>D.E.G.</u>
	PROJECT LEADER: <u>I.E.K.</u>	SHEET <u>18</u> OF 48

p97d228ups2.i