

203.28 EXCAVATION OF SURFACES AND PAVEMENTS

STA. I+385.0 - STA. I+386.8 LT

604.42 CHANGE ELEVATION OF SEWER MANHOLE

STA. I+368.8 LT

618.10 PORTLAND CEMENT CONCRETE SIDEWALK, 125 mm

STA. I+340.0 - STA. I+383.0 LT

618.20 BRICK PAVING

STA. I+340.0 - STA. I+381.5 LT
STA. I+340.0 - STA. I+390.0 RT

618.30 DETECTABLE WARNING SURFACE

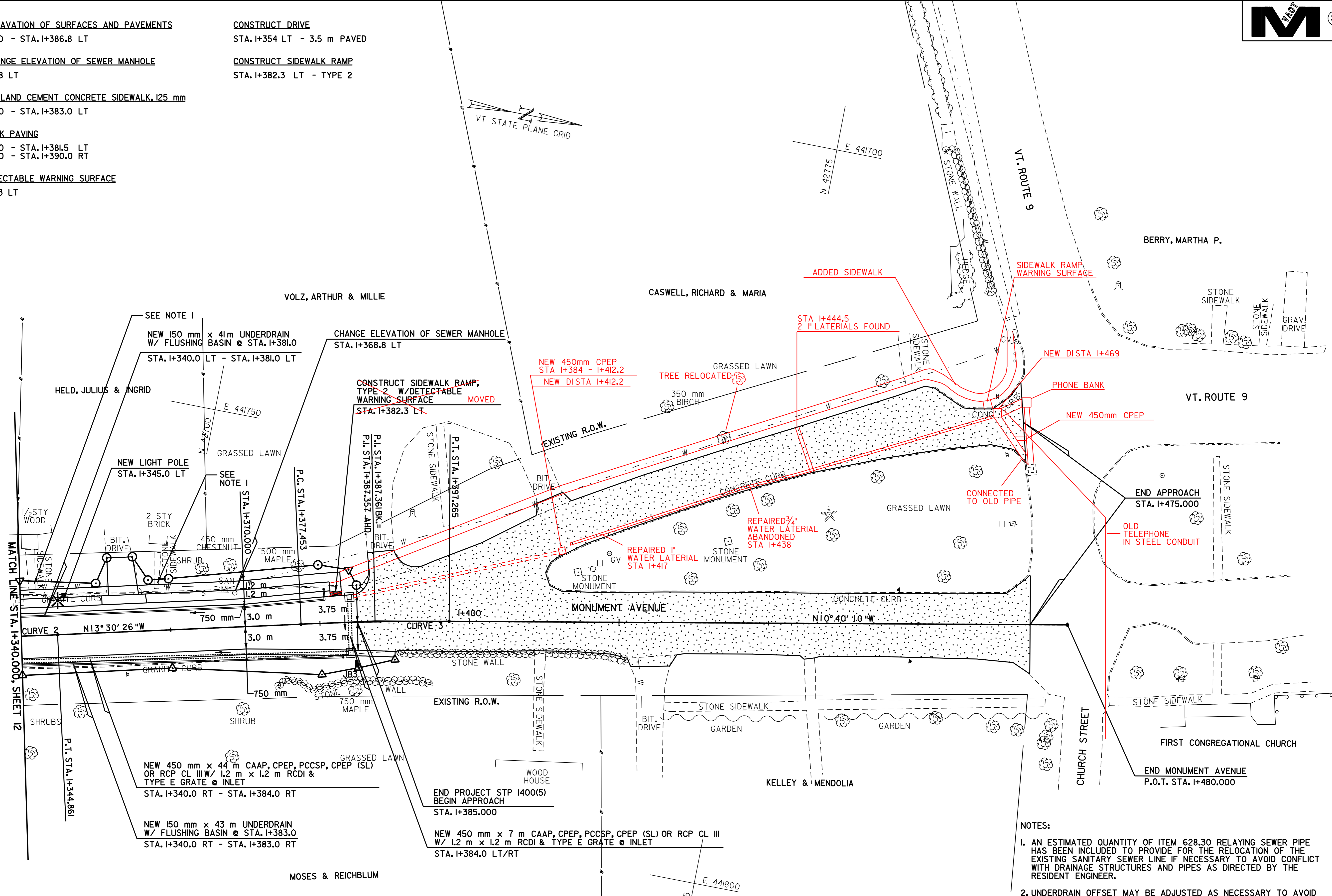
STA. I+382.3 LT

CONSTRUCT DRIVE

STA. I+354 LT - 3.5 m PAVED

CONSTRUCT SIDEWALK RAMP

STA. I+382.3 LT - TYPE 2

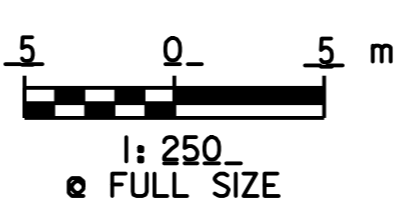


- NOTES:**
1. AN ESTIMATED QUANTITY OF ITEM 628.30 RELAYING SEWER PIPE HAS BEEN INCLUDED TO PROVIDE FOR THE RELOCATION OF THE EXISTING SANITARY SEWER LINE IF NECESSARY TO AVOID CONFLICT WITH DRAINAGE STRUCTURES AND PIPES AS DIRECTED BY THE RESIDENT ENGINEER.
 2. UNDERDRAIN OFFSET MAY BE ADJUSTED AS NECESSARY TO AVOID CONFLICT WITH UTILITIES AS DIRECTED BY THE RESIDENT ENGINEER.

LIMITS OF ITEM 203.28
EXCAVATION OF SURFACES AND PAVEMENTS

LIMITS OF ITEM 210.10
COLD PLANING-BITUMINOUS PAVEMENT

| | |
|---|---|
| <p>CURVE 2</p> <p>P.C.= STA. I+245.685 P.T.= STA. I+344.861</p> <p>$\Delta=16^{\circ}14'07''$ LT R=350.000_m T=49.923_m L=99.176_m E=3.542_m e_{max}=N.C.</p> | <p>CURVE 3</p> <p>P.C.= STA. I+377.453 P.T.= STA. I+397.265</p> <p>$\Delta=2^{\circ}50'16''$ RT R=400.000_m T=9.908_m L=19.812_m E=0.123_m e_{max}=N.C.</p> |
|---|---|



DATUM

VERTICAL N/A

HORIZONTAL NAD_83_(1996)

PLAN SHEET # 3

VERMONT AGENCY OF TRANSPORTATION

CHA CLOUGH, HARBOUR & ASSOCIATES
ENGINEERS, PLANNERS & LANDSCAPE ARCHITECTS
WINNERS CIRCLE ALBANY, NEW YORK, 12208

PROJECT NAME: OLD BENNINGTON

PROJECT NUMBER: STP 1400(5)

FILE NAME: /pave/97d228/p97d228.dgn

PROJECT LEADER: I.E.K.

DESIGNED BY: J.S.P.

PLOT DATE: 05-MAY-2008 14

DRAWN BY: C.A.K.

CHECKED BY: D.E.G.

SHEET 13 OF 48