

TYPICAL SECTION - MONUMENT AVENUE

MATERIAL ITEM	THICKNESS	TOLERANCE
PAVEMENT (TOTAL DEPTH)	± 5	
BASE COURSE	± 15	
SUBBASE	± 30	

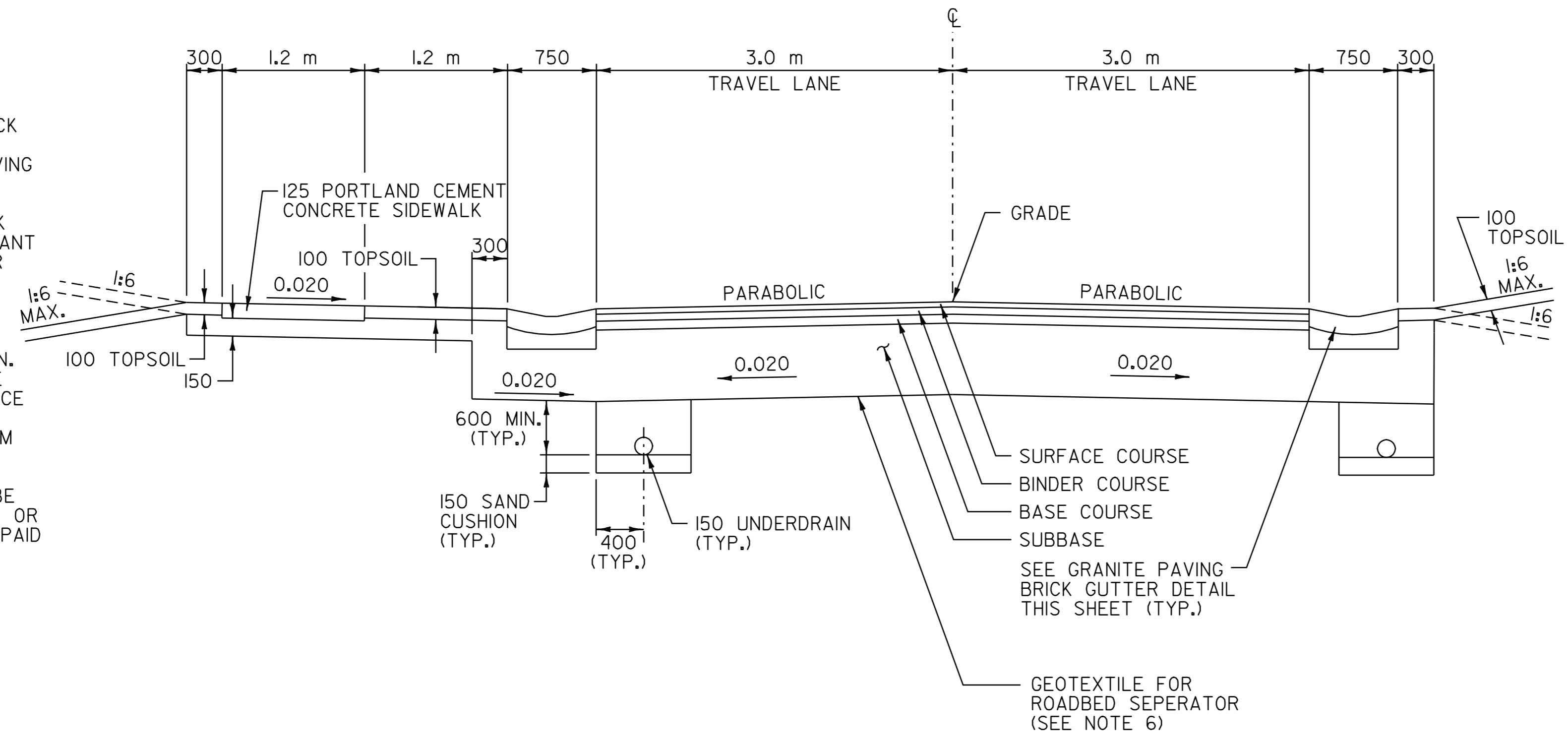
- 45 SURFACE COURSE, SUPERPAVE BITUMINOUS CONCRETE PAVEMENT (PG 58-28), TYPE IIIS
- 60 BINDER COURSE, SUPERPAVE BITUMINOUS CONCRETE PAVEMENT (PG 58-28), TYPE IIS
- 75 BASE COURSE, SUPERPAVE BITUMINOUS CONCRETE PAVEMENT (PG 58-28), TYPE IS
- 600 SUBBASE OF CRUSHED GRAVEL (COARSE GRADED)

SEEDING FORMULA URBAN AREAS

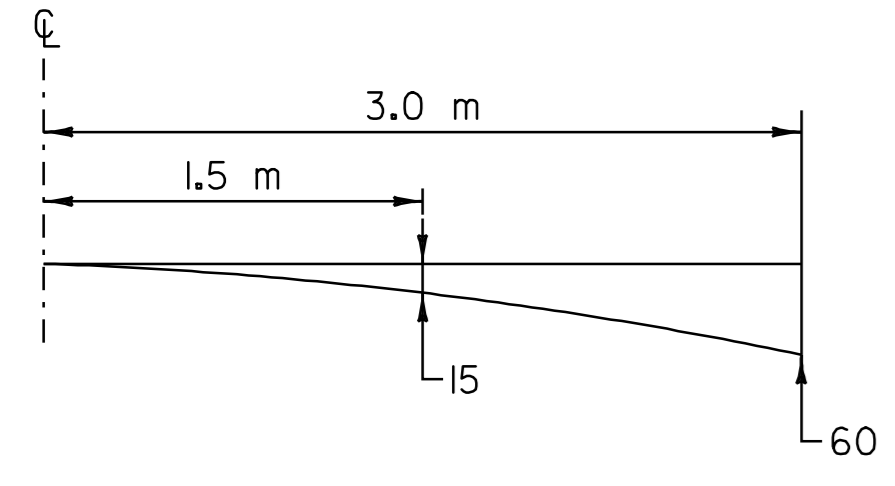
% MASS	kg/ha	NAME	PUR %	GERM %
42.5	38.0	CREeping RED FESCUE	98	85
10.0	9.0	PERENNIAL RYE GRASS	95	90
42.5	38.0	KENTUCKY BLUE GRASS	85	85
5.0	5.0	ANNUAL RYE GRASS	95	85
100.0	90.0			

- NOTES:
- AT DRIVES IN SIDEWALK LOCATIONS, THE AREA BETWEEN THE GUTTER AND SIDEWALK SHALL BE PAVED WITH 45 mm SUPERPAVE BITUMINOUS CONCRETE PAVEMENT (PG 58-28), TYPE IIIS THROUGH THE DRIVE AND A MINIMUM OF 900 mm EACH SIDE OF SPECIFIED DRIVE WIDTH.
 - VARIATIONS IN GRANITE PAVING BRICK HEIGHT SHALL BE ACCOMMODATED WITHIN THE DEPTH OF THE MORTAR BED.
 - ALL WORK TO CONSTRUCT GRANITE PAVING BRICK GUTTERS ABOVE LIMITS OF CONCRETE, CLASS B TO BE PAID FOR UNDER ITEM 618.20 BRICK PAVING (SEE SPECIAL PROVISIONS).
 - TRANSVERSE JOINTS FOR GRANITE PAVING BRICK GUTTERS AS SHOWN IN THE SAWCUT AND SEALANT DETAIL SHALL BE CUT TO EDGE OF GUTTER OR AS DIRECTED BY THE RESIDENT ENGINEER.
 - VERTICAL GRANITE CURB REMOVED DURING EXCAVATION FOR THIS PROJECT SHALL BE RETURNED TO THE VILLAGE OF OLD BENNINGTON. THE CONTRACTOR SHALL REMOVE AND SALVAGE EXISTING VERTICAL GRANITE CURB IN ACCORDANCE WITH SUBSECTION 616.11 OF THE STANDARD SPECIFICATIONS. PAYMENT IS INCIDENTAL TO ITEM 203.10 COMMON EXCAVATION.
 - GEOTEXTILE FOR ROADBED SEPERATOR SHALL BE INSTALLED IN THE AREAS SHOWN IN THE PLANS OR AS DIRECTED BY THE RESIDENT ENGINEER AND PAID FOR UNDER ITEM 649.II.

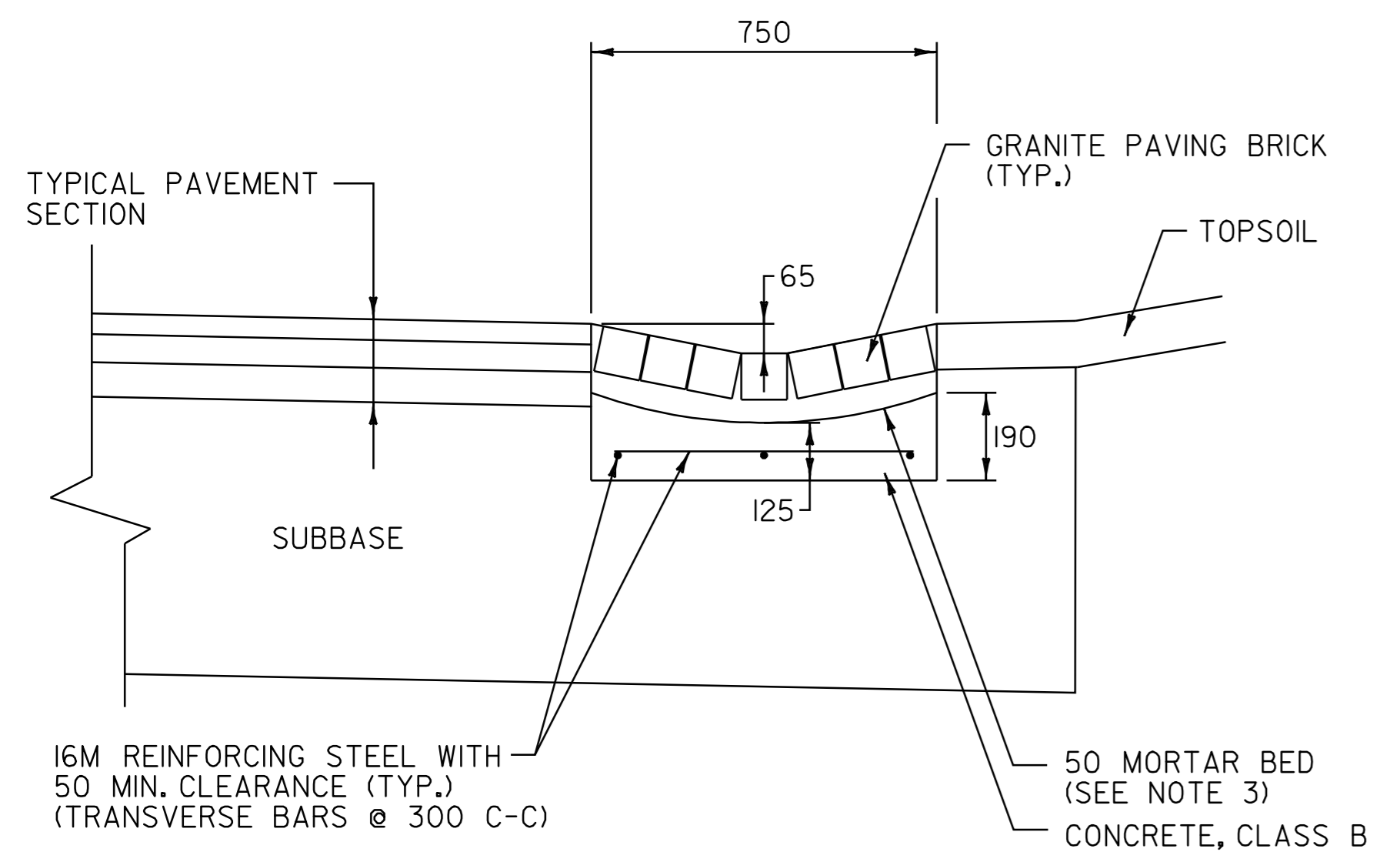
TACK COAT: EMULSIFIED ASPHALT IS TO BE APPLIED AT THE RATE OF 0.12 L/m BETWEEN SUCCESSIVE COURSES OF PAVEMENT AS DIRECTED BY THE RESIDENT ENGINEER.



- GENERAL NOTES
- SEED MIXTURE: SHALL NOT HAVE A WEED CONTENT EXCEEDING 0.40% BY MASS AND SHALL BE FREE OF ALL NOXIOUS SEED.
 - SEED: TO BE APPLIED PER SEEDING FORMULAS OR AS DIRECTED BY THE RESIDENT ENGINEER.
 - FERTILIZER: FORMULA 10-20-10 TO BE USED WITH SEED AND APPLIED AT THE RATE OF 560 kg/ha (HYDRO SEEDERS MAY USE 19-19-19 FORMULA).
 - AGRICULTURAL LIMESTONE: TO BE APPLIED AT THE RATE OF 4500 kg/ha OR AS DIRECTED BY THE RESIDENT ENGINEER.
 - HAY MULCH: TO BE PLACED ON EARTH SLOPES AT THE RATE OF 4500 kg/ha OR AS DIRECTED BY THE RESIDENT ENGINEER.
 - TOPSOIL: TO BE USED WITH SEED AS INDICATED ON THE PLANS OR AS DIRECTED BY THE RESIDENT ENGINEER.
 - MARKER POSTS: TO BE PLACED AT PIPE INLET AND OUTLET LOCATIONS ONLY.
 - SLOPE ROUNDING: ALL CUT SLOPES TO BE ROUNDED IN ACCORDANCE WITH STANDARD SHEET B-5M.
 - PAY LIMITS OF SAND BORROW: WHEN USED IN CONJUNCTION WITH UNDERDRAIN, SEE STANDARD SHEET D-2M.

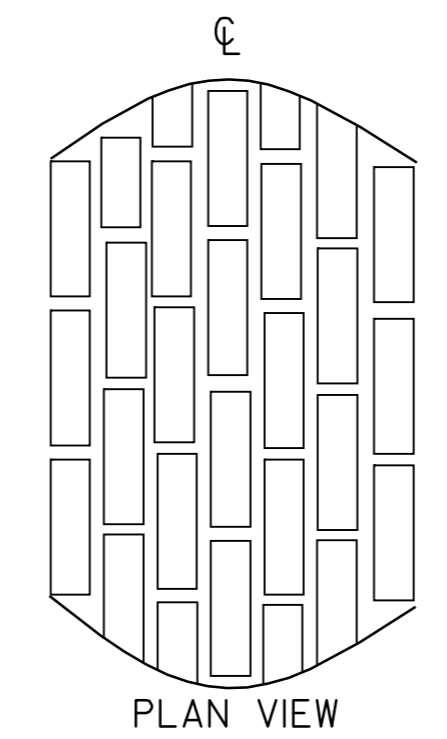
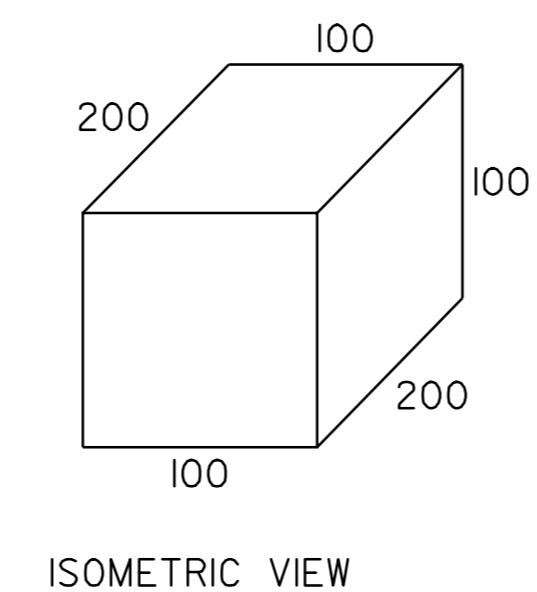
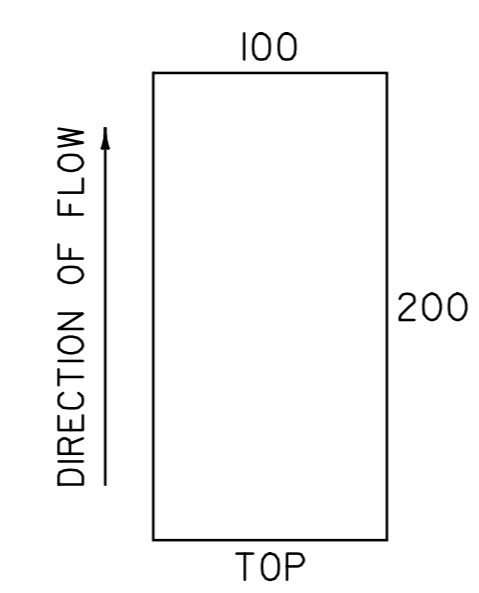
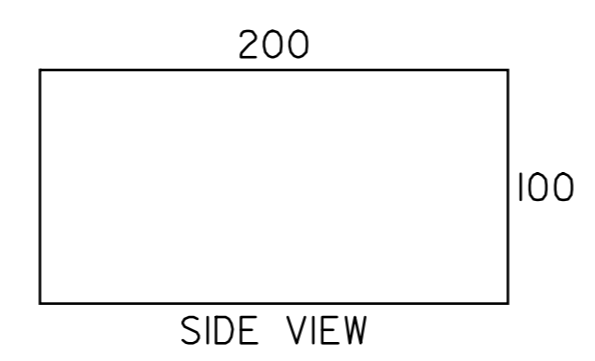


PARABOLIC DETAIL



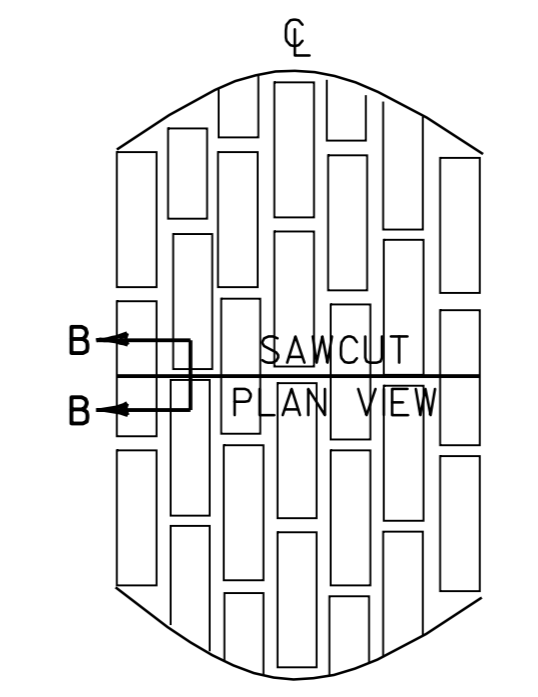
GRANITE PAVING BRICK GUTTER DETAIL

N.T.S.

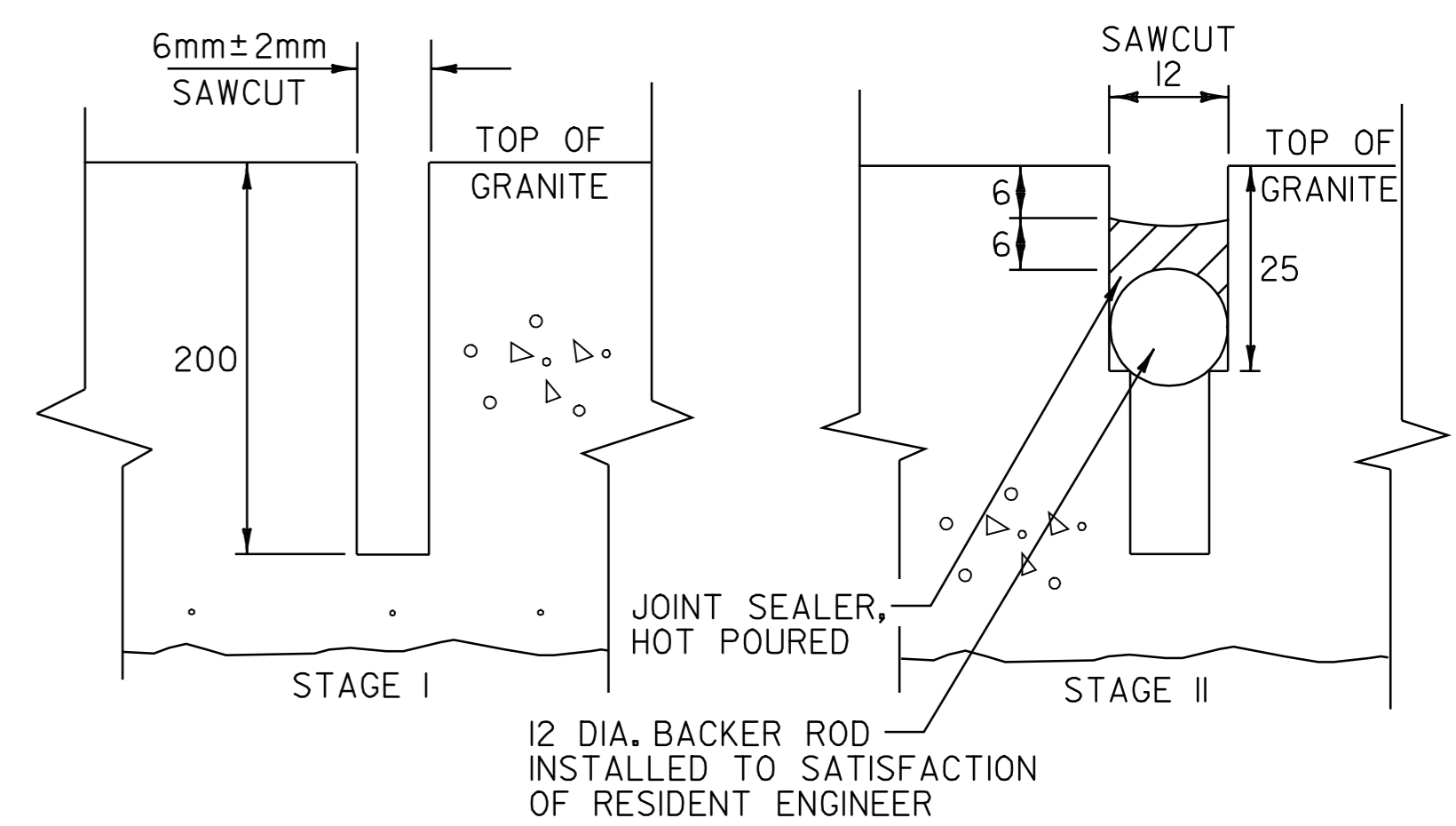


GRANITE PAVING BRICK DETAIL

N.T.S.



SAWCUT EVERY 12-18 m OR AS DIRECTED BY THE RESIDENT ENGINEER



DETAIL B-B

SAWCUT AND SEALANT DETAIL FOR GRANITE PAVING BRICK GUTTERS

N.T.S.

ALL DIMENSIONS IN MILLIMETERS EXCEPT WHERE OTHERWISE INDICATED

TYPICAL SECTION SHEET

VERMONT AGENCY OF TRANSPORTATION

CLOUGH, HARBOUR & ASSOCIATES ENGINEERS, SURVEYORS, PLANNERS & LANDSCAPE ARCHITECTS <small>MEMBERS: CIVIL ENGINEERS, PROFESSIONAL LANDSCAPE ARCHITECTS</small> 110 BARNY CIRCLE ALBANY, NEW YORK, 12208	PROJECT NAME: <u>OLD BENNINGTON</u> PROJECT NUMBER: <u>STP 1400(5)</u>	PLOT DATE: <u>05-MAY-2008 14</u> DRAWN BY: <u>C.A.K.</u> CHECKED BY: <u>D.E.G.</u> SHEET <u>8</u> OF 48
	FILE NAME: <u>/pave/97d228/p97d228.dgn</u> PROJECT LEADER: <u>J.S.P.</u> DESIGNED BY: <u>J.S.P.</u> p97d228.tps.i	

DATUM	
VERTICAL	<u>N/A</u>
HORIZONTAL	<u>NAD_83_(1996)</u>