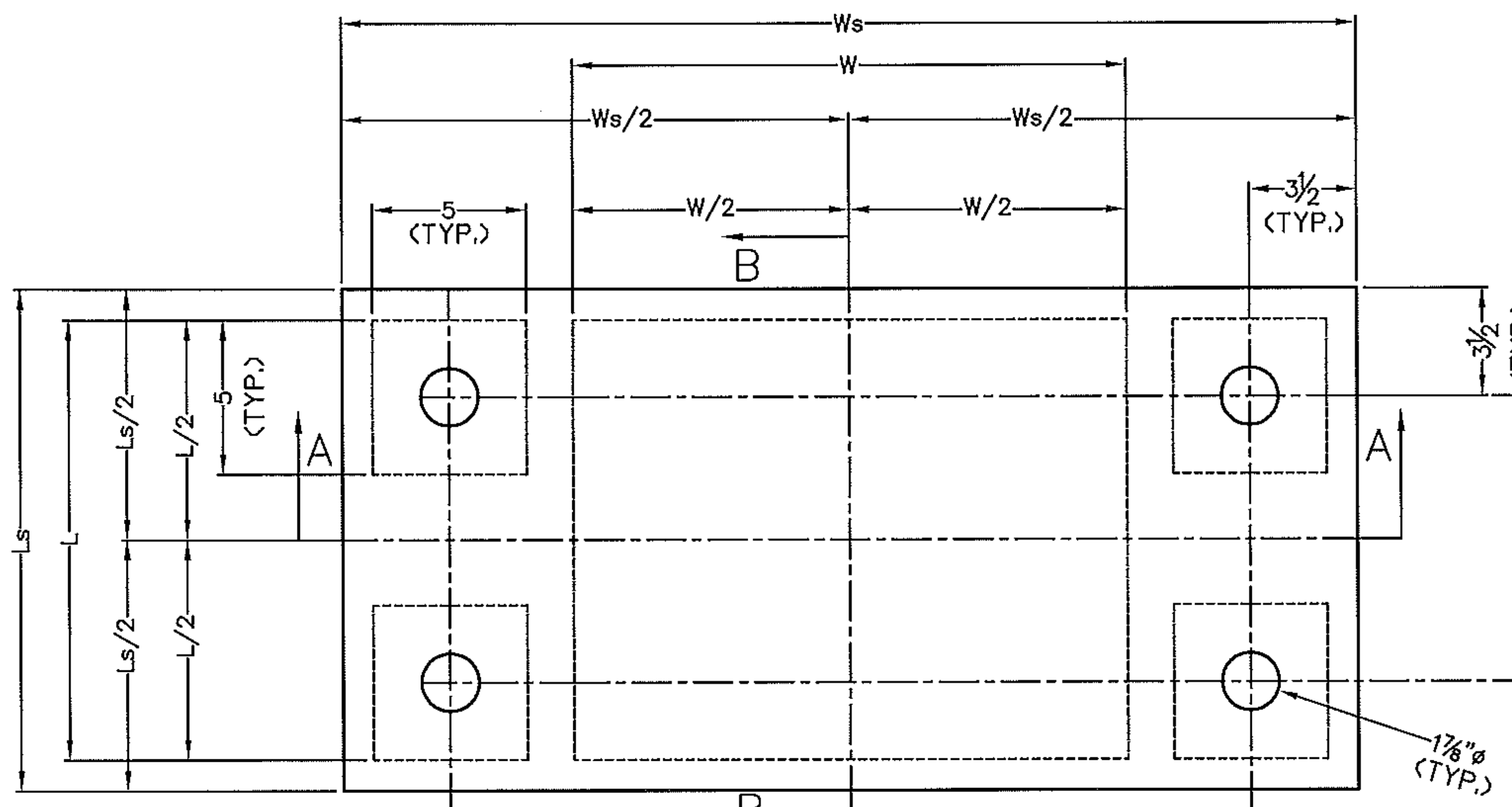
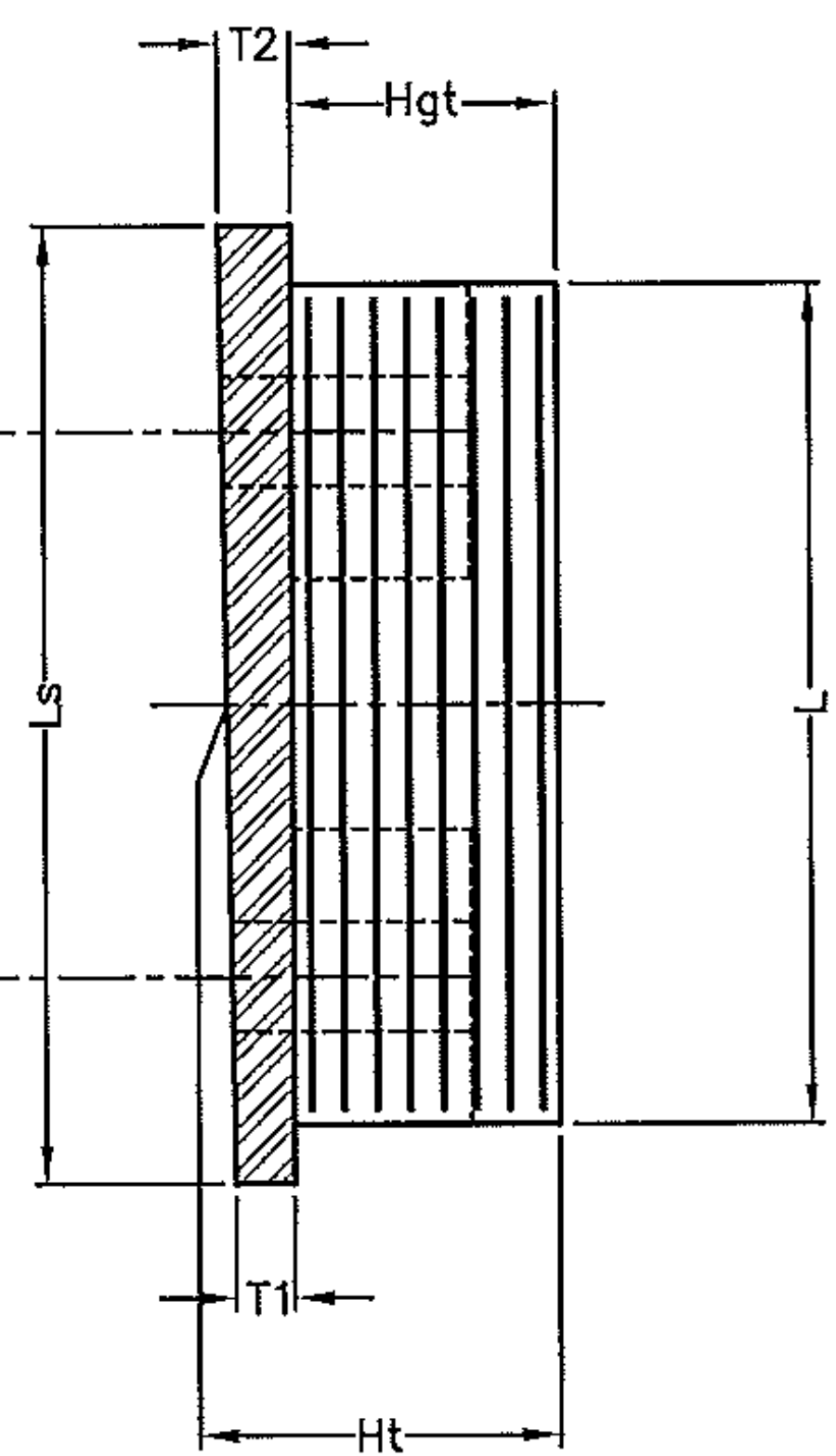


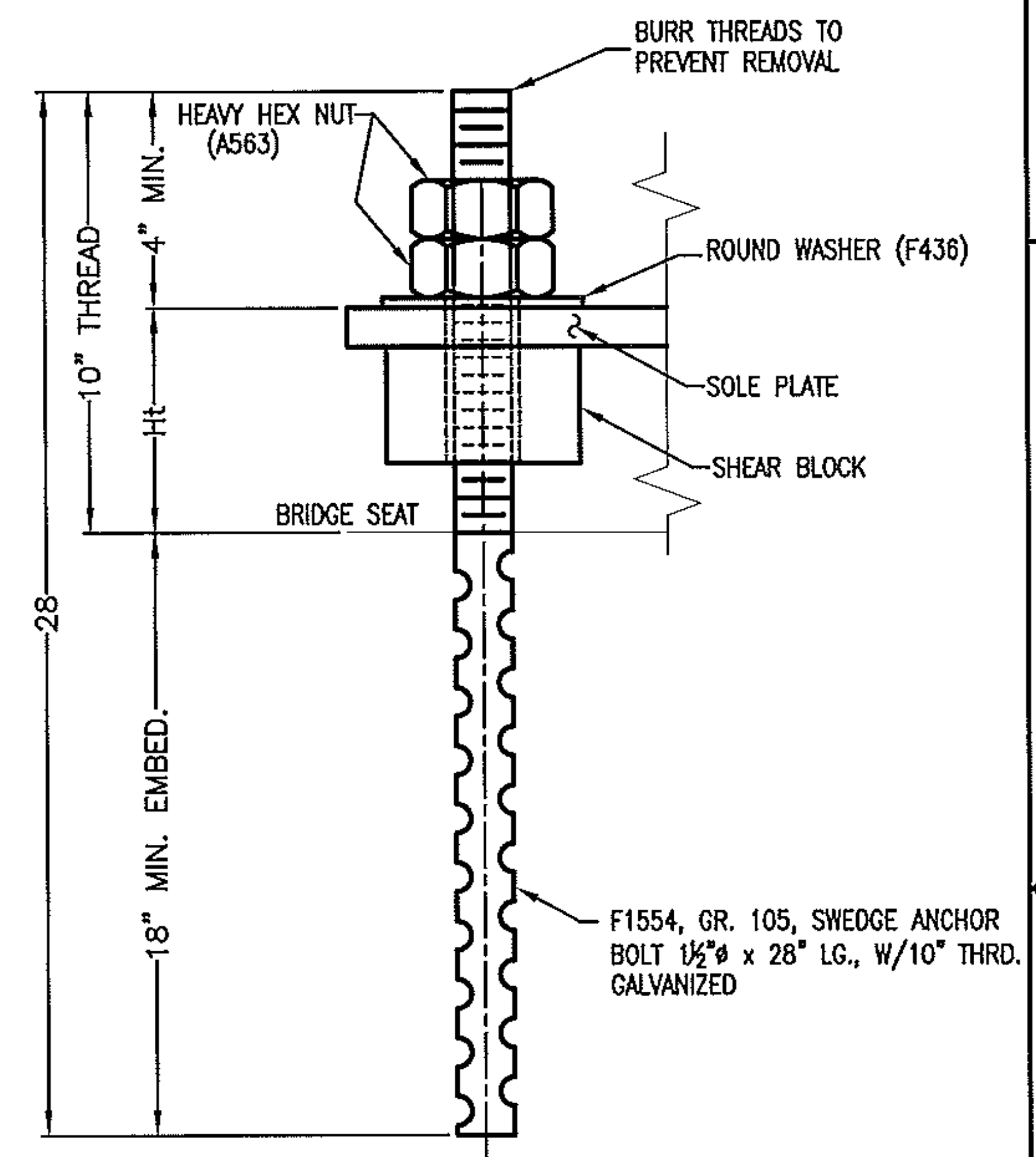
REVISIONS					
ZONE	REV	DESCRIPTION	REVISED BY	DATE	APPROVED



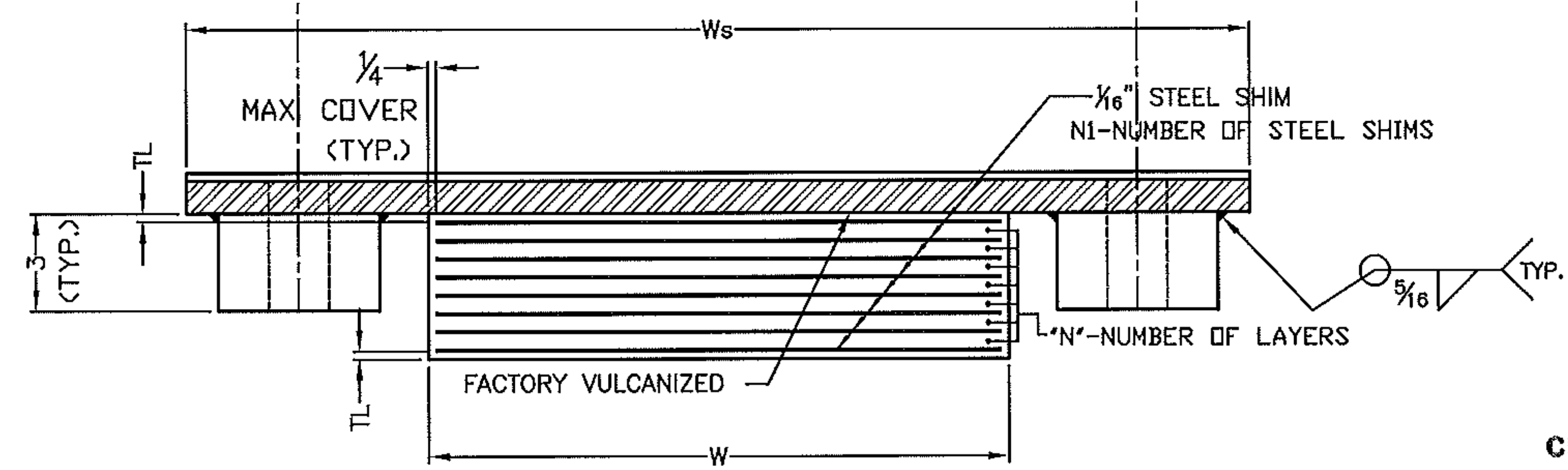
PLAN VIEW



SECTION B-B



ANCHOR BOLT DETAIL
QTY. REQ'D = 40 ASSY.



SECTION A-A

Vermont Agency of Transportation
RECEIVED
CK'D BY David Peterson OK'D BY H. Salls
Jun 27, 2012
RESUBMIT APPROVED ✓
BY C. Carlson DATE 6/27/12

LOCATION	QUANTITY REQ'D.	DL+SDL (KIPS)	LL W/O IMP. (KIPS)	TOTAL DESIGN REACTION (KIPS)	ELASTOMER LAYERS				SOLE PLATE				BEARING Ht			
					THK./LAYERS	N/LAYERS	N1	TL	L	W	Hgt.	Ws		Ls	T1	T2
PIER #1	5	109.6	128.1	237.7	1/2	7	8	1/4	14 1/4	18	4 1/2	33	16 1/4	1	1 1/4	5 1/2
PIER #2	5	109.6	128.1	237.7	5/8	5	6	3/8	14 1/2	20 1/2	4 1/4	35 1/2	16 1/2	1	1	5 1/4

SEE SHEET 2 OF 2 FOR NOTES

BRIDGE PROJECT
NEWPORT CITY
COUNTY OF ORLEANS

PROJECT NO. : BRO 1449(25)

FIXED ELASTOMERIC BEARING DETAILS
FOR PIER 1 & PIER 2

AMSCOT
STRUCTURAL PRODUCTS CORP.

SCALE: N.T.S. APPR'D: BF DRAWN BY: E.J.G.
DATE: 2/22/12 REVISION: 0

FOR: REED & REED INC.

DWG NO: RR12A1R0 SHEET 1 OF 2