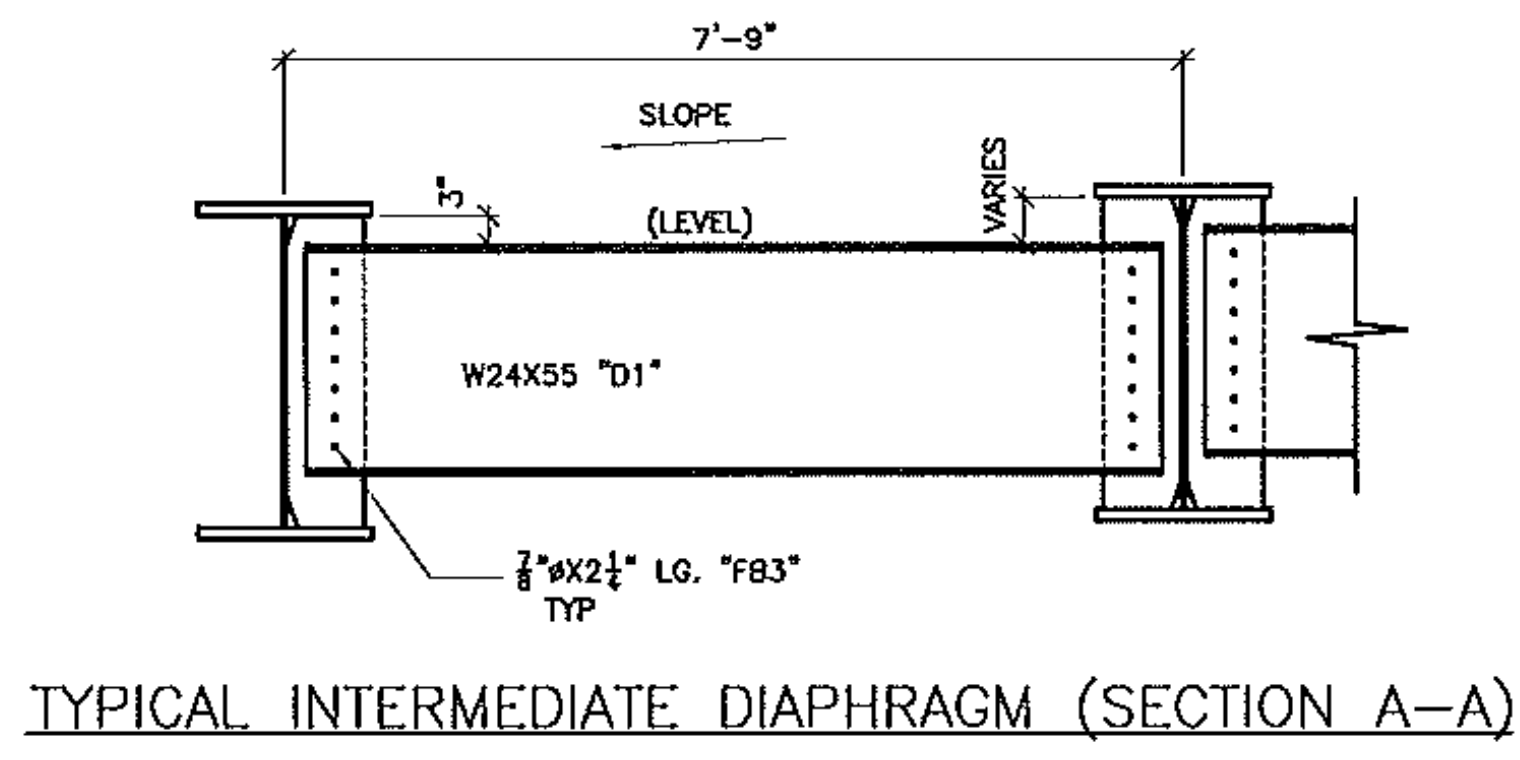
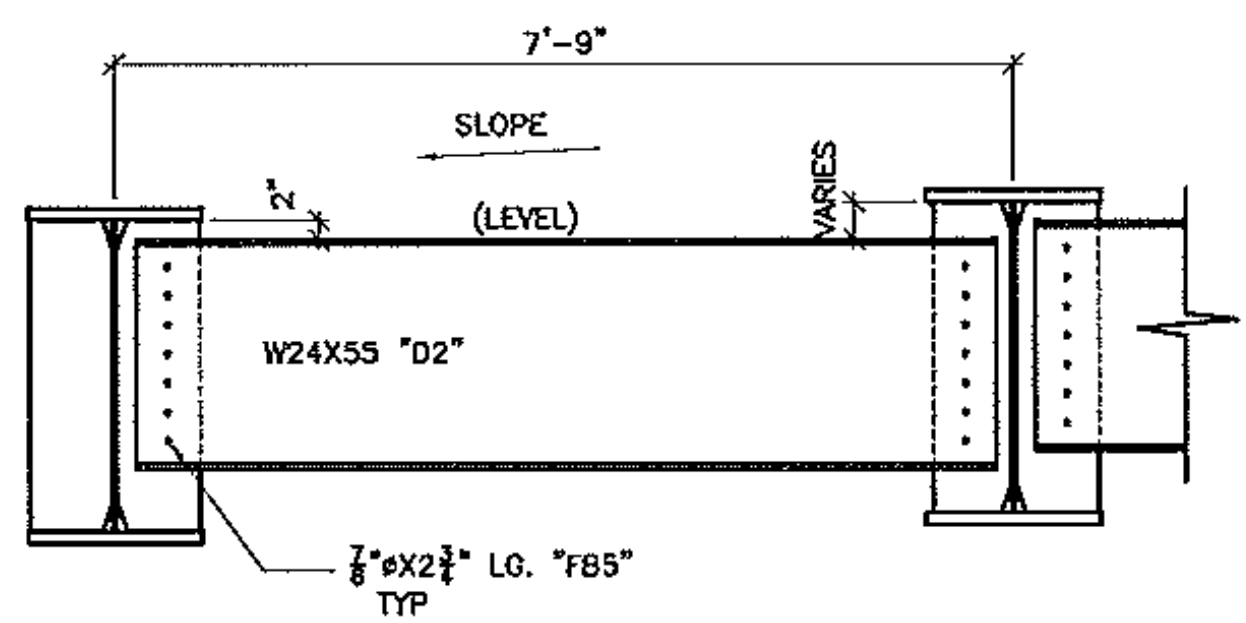


FRAMING PLAN



TYPICAL INTERMEDIATE DIAPHRAGM (SECTION A-A)



TYPICAL PIER DIAPHRAGM (SECTION B-B)

FIELD BOLT LIST (ALL BOLTS HAVE 1N&1W EACH)  
 BOLTS: A325 MECH. GALV. WITH RO-CAP TESTING

MARK	QTY.	DESCRIPTION	LOCATION
FB3	952	7/8"ØX2 1/4"	DIAPH. "D1" TO CONN. PL
FB5	112	7/8"ØX2 3/4"	DIAPH. "D2" TO CONN. PL
FB5	2700	7/8"ØX2 3/4"	WEB SPLICE
FB14	1600	7/8"ØX5	SPLICE #1 FLANGE
FB16	1920	7/8"ØX5 1/2"	SPLICE #2 FLANGE

Vermont Agency of Transportation  
**RECEIVED**  
 CK'D BY GFR OK'D BY \_\_\_\_\_  
 05/15/2012  
 RESUBMIT \_\_\_\_\_ APPROVED X \_\_\_\_\_  
 BY C. CARLSON DATE 05/16/2012

FINISH			
MATERIAL	SEE DETAIL SHEETS		
HOLES			
ELECTRODES			
WELDS	PER WFS		
SURFACE PREP		9/15/12	PER APPROVAL
	NO	DATE	DESCRIPTION
			BY
REVISIONS			
		<b>ADVANCED RESOURCES &amp; CONST. ENTERPRISES, INCORPORATED</b> P.O. BOX 120 KINGFIELD, ME. 04947 PHONE: (207) 265-2646 -- FAX: (207) 265-4054	
DRAFTER	JAC	FRAMING PLAN	CONTRACT NO.
DATE	2/28/12	VERMONT AGENCY OF TRANSPORTATION, NEWPORT CITY, ORLEANS CO	BRD 1449 (28)
CHECKED	MTD	RAILROAD SQUARE, TH II (CLASS 2) MAJOR COLL. BRIDGE NO 9	DWG. NO.
JOB#	12-100	REED & REED	E1