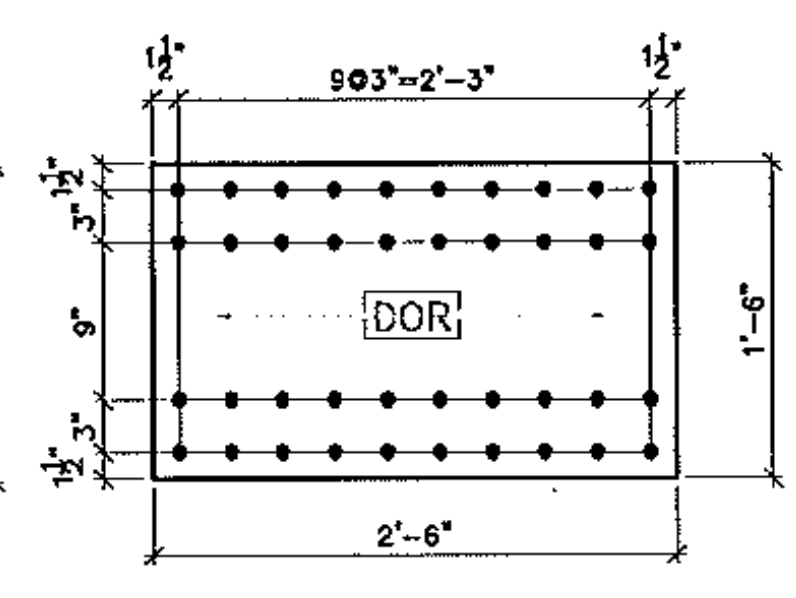
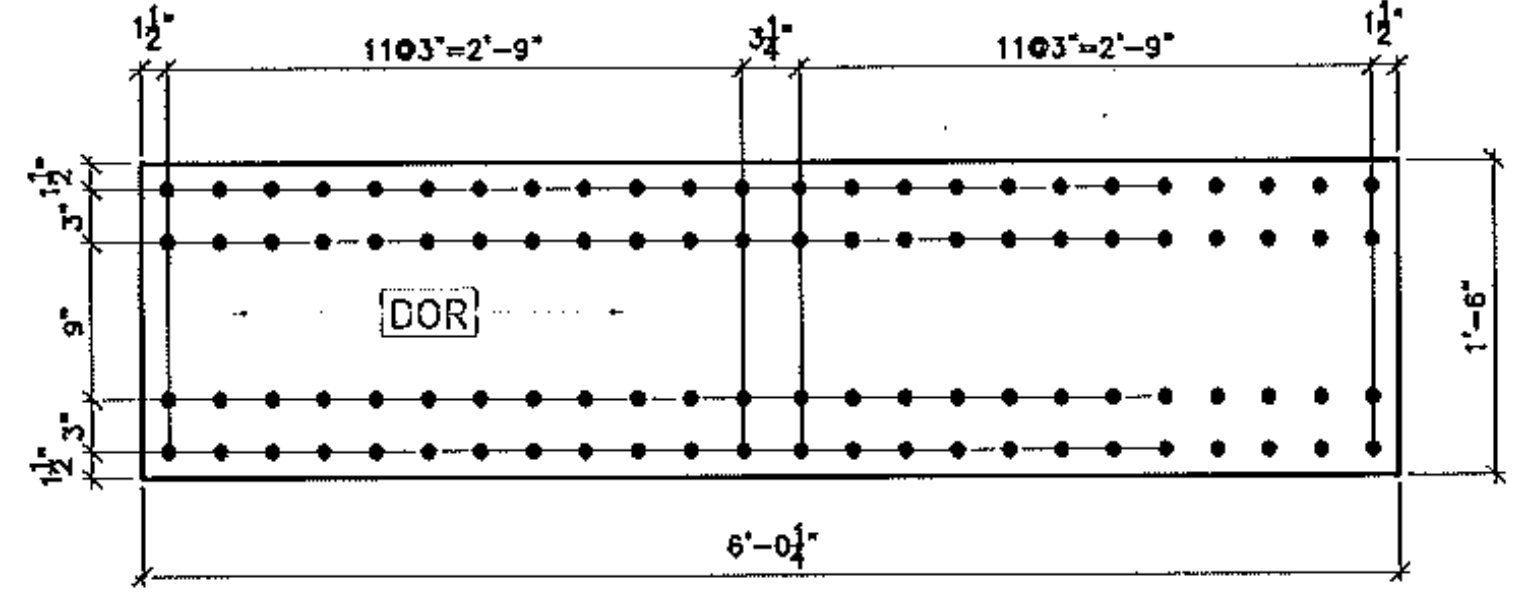


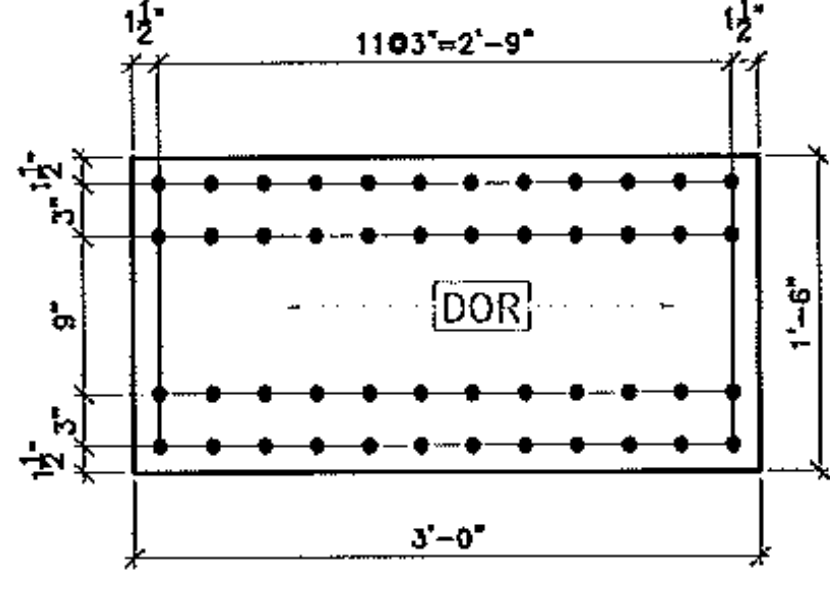
20 REQ'D. 3/8" SPLICE PL. MARK "s1"



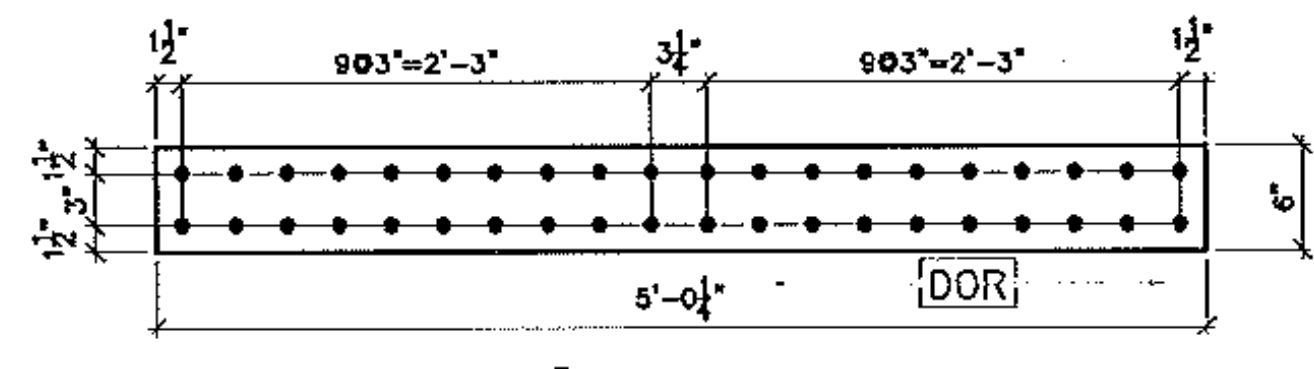
20 REQ'D. 1" FILL PL. MARK "fp1"
10 ARE USED FOR SHOP ASSEMBLY OF SPLICES
10 ARE SHIPPED LOOSE FOR FIELD ASSEMBLY



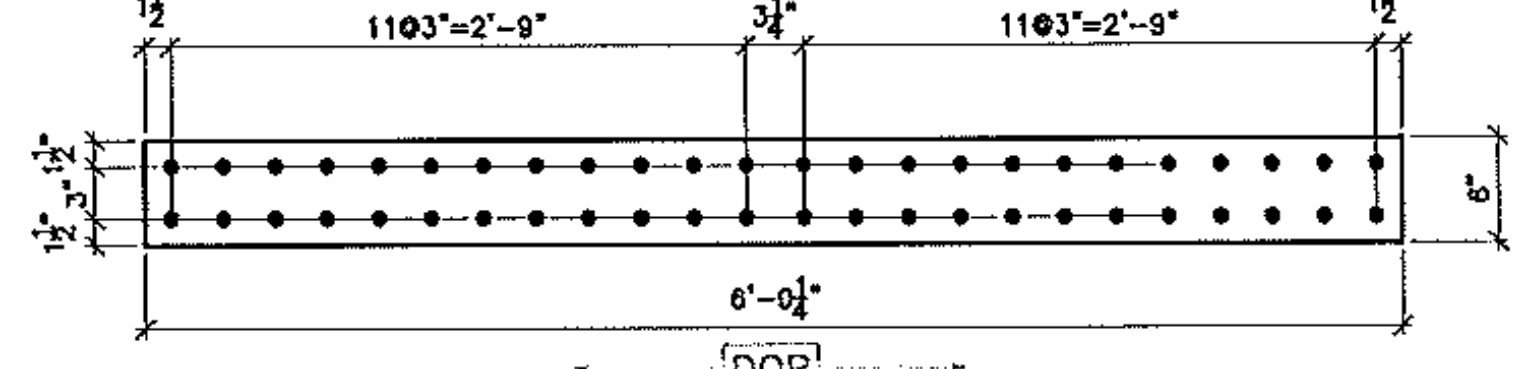
20 REQ'D. 1" SPLICE PL. MARK "s5"



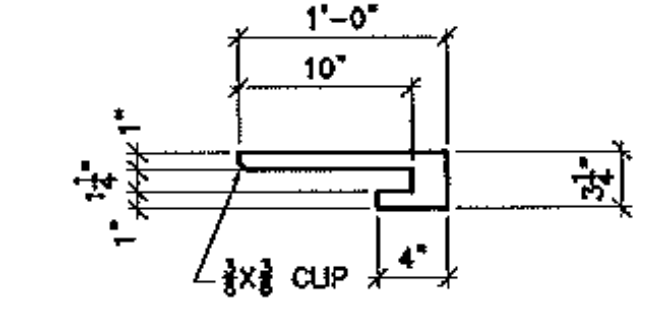
20 REQ'D. 1/2" FILL PL. MARK "fp2"
10 ARE USED FOR SHOP ASSEMBLY OF SPLICES
10 ARE SHIPPED LOOSE FOR FIELD ASSEMBLY



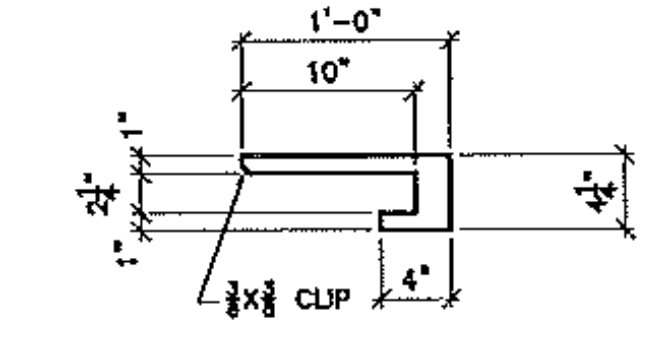
40 REQ'D. 3/8" SPLICE PL. MARK "s2"



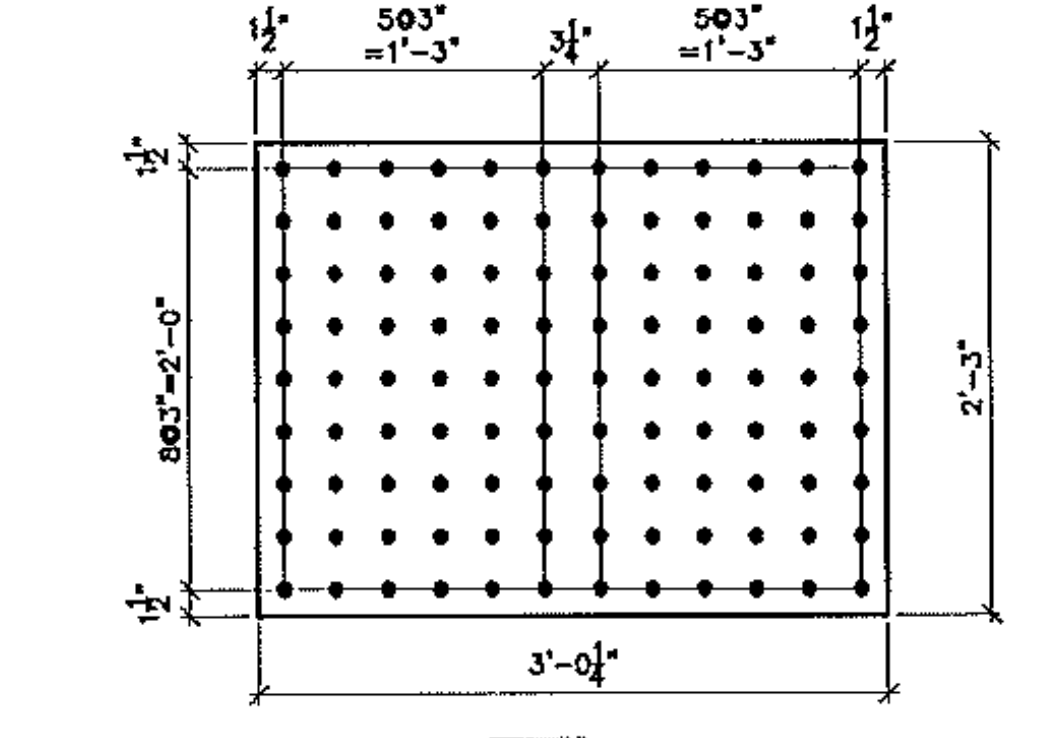
40 REQ'D. 1" SPLICE PL. MARK "s6"



4 REQ'D. 1/2" DRIP PL. MARK "dp1"

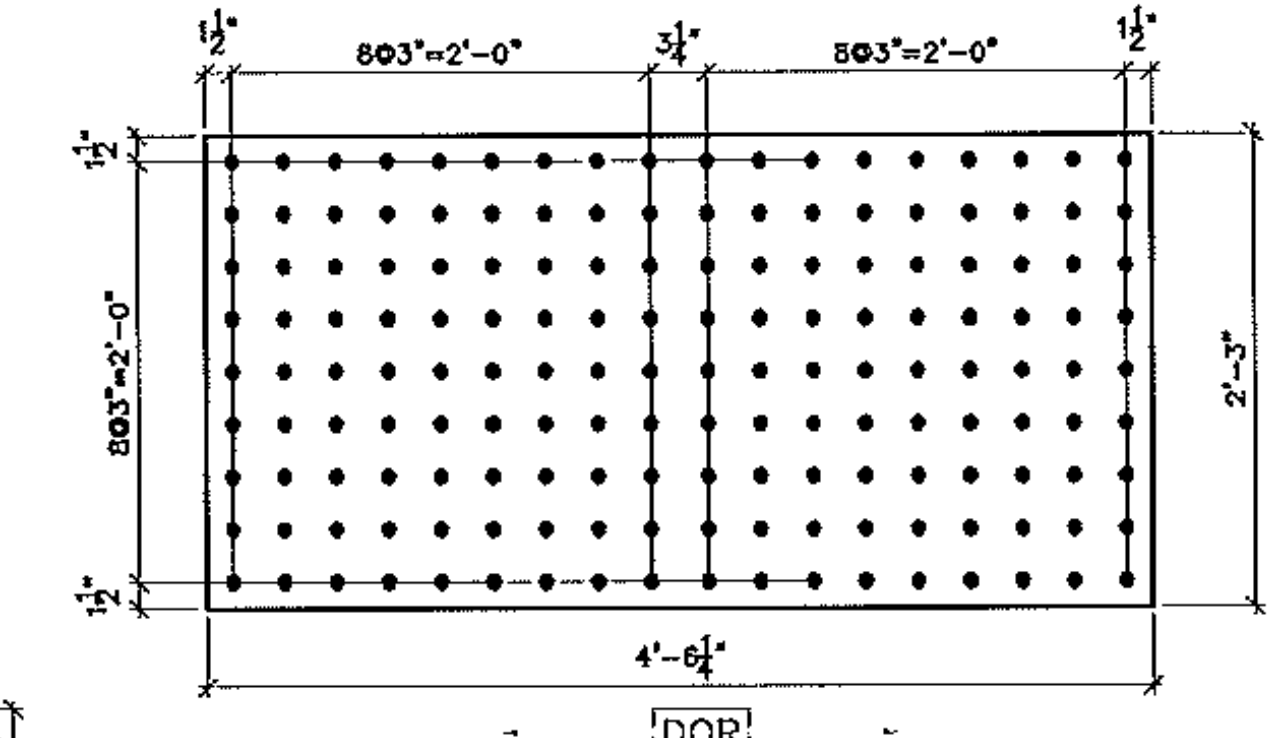


4 REQ'D. 1/2" DRIP PL. MARK "dp2"

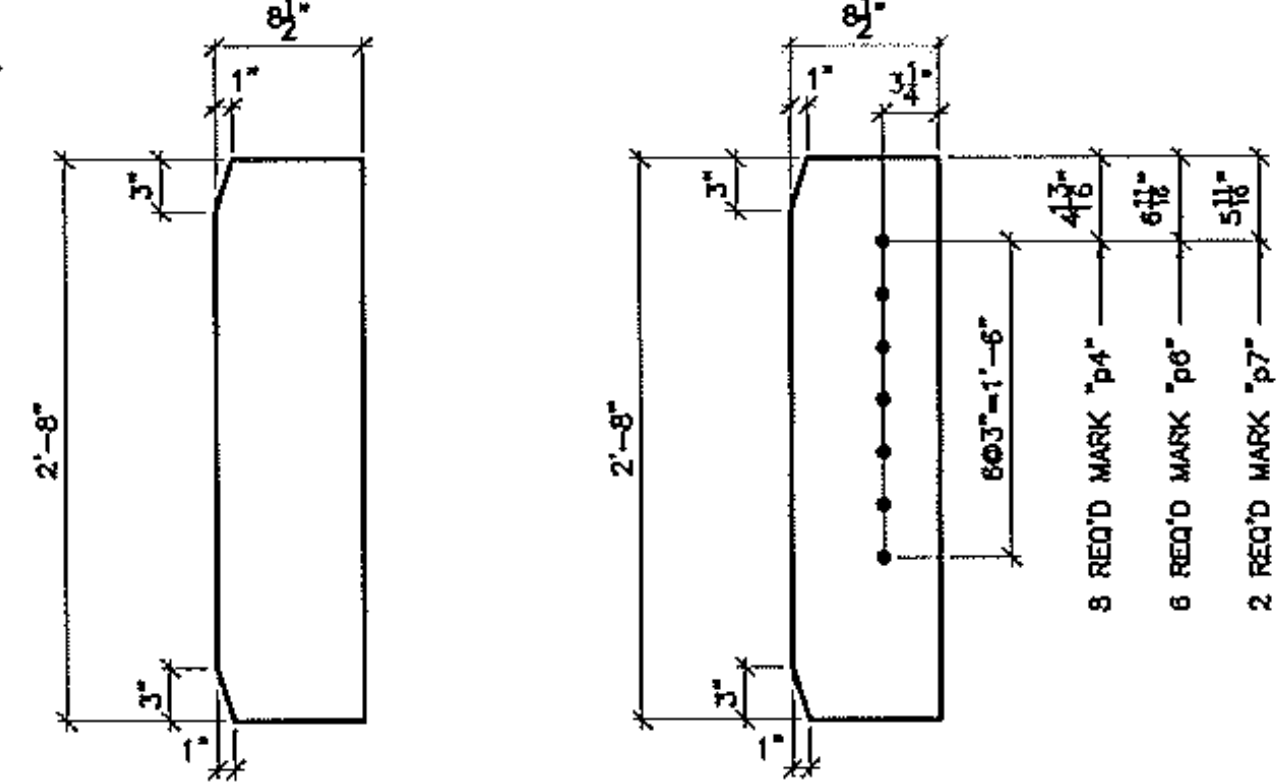


20 REQ'D. 3/8" SPLICE PL. MARK "s3"

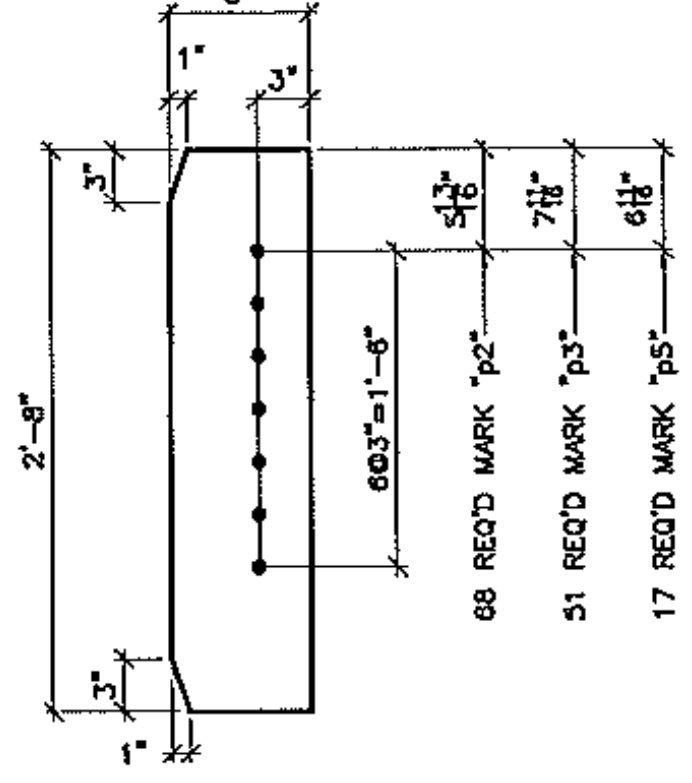
DOR=DIRECTION OF ROLLING



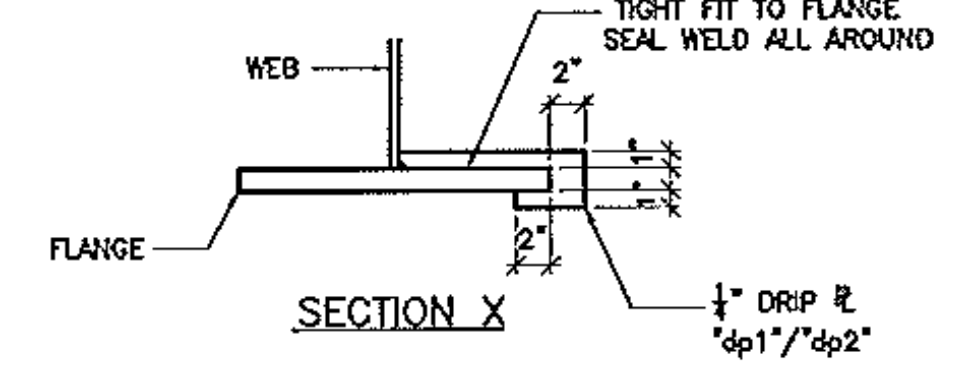
20 REQ'D. 3/8" SPLICE PL. MARK "s7"



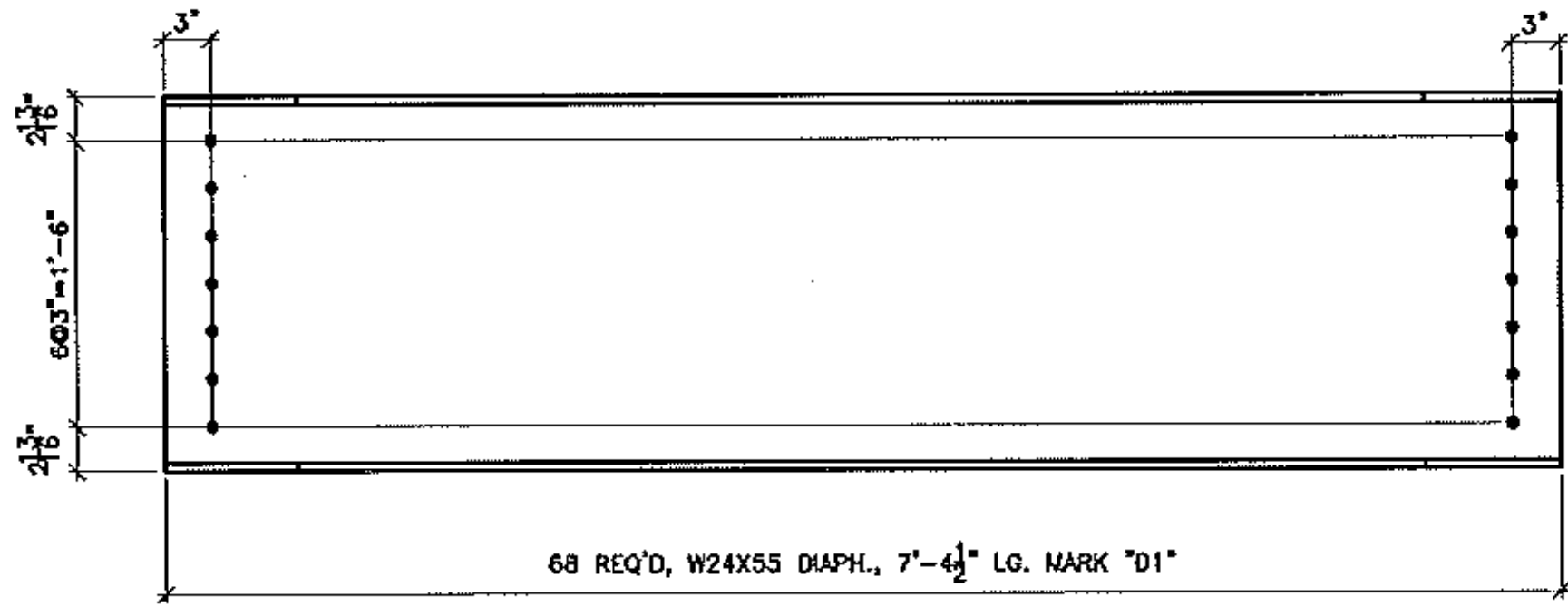
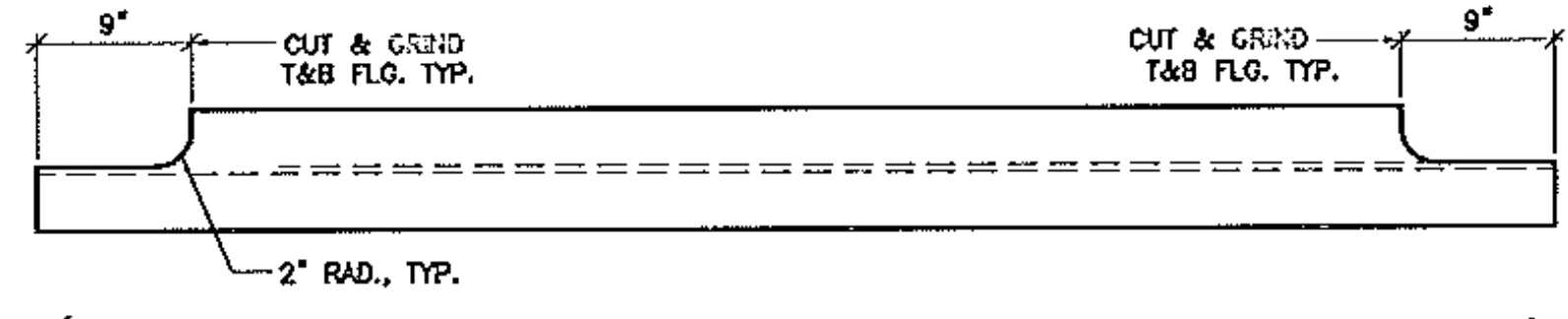
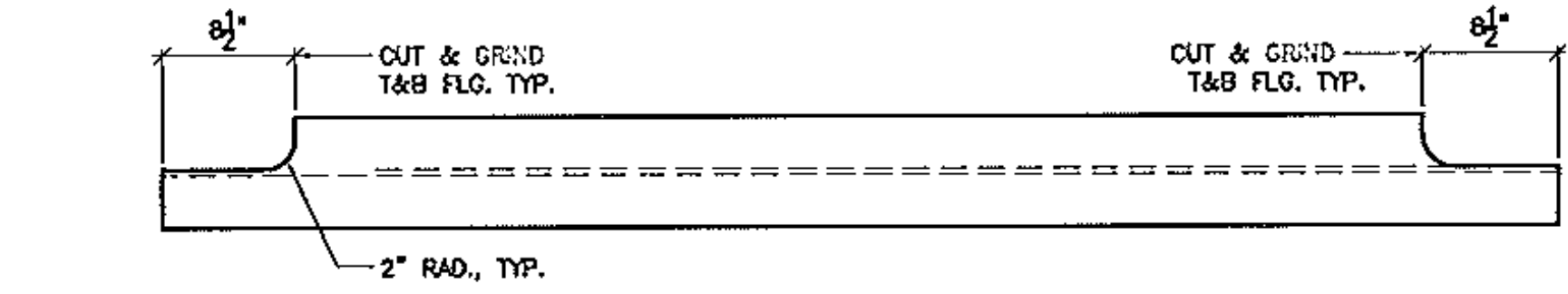
24 REQ'D. 7/8" STIFF. PL. MARK "p1" 16 REQ'D. 7/8" CONN. PL.



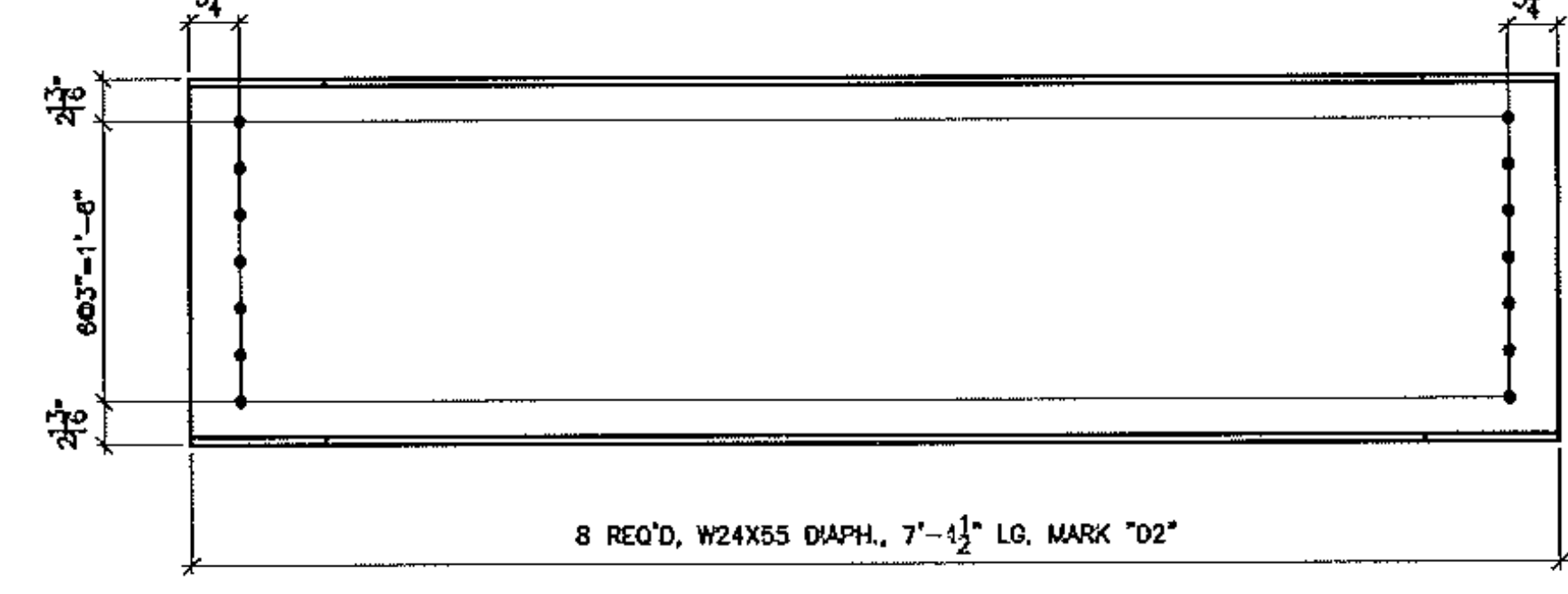
85 REQ'D. 1/2" CONN. PL.



WELD TERMINATION DETAIL
* NO WELD FOR 3/8" MIN. 3/4" MAX.



68 REQ'D. W24X55 DIAPH., 7'-4 1/2" LG. MARK "D1"



8 REQ'D. W24X55 DIAPH., 7'-4 1/2" LG. MARK "D2"

Vermont Agency of Transportation
RECEIVED
CK'D BY GFR OK'D BY
05/15/2012

RESUBMIT APPROVED X
BY C. CARLSON DATE 05/16/2012

BILL OF MATERIAL

| SHIP | SHIP MARK | NO. PCS. | PIECE MARK | DESCRIPTION | LENGTH | REMARKS | WT. |
|------|-----------|----------|------------|-------------------------------------|----------|---------|-------|
| | | 20 | s1 | PL 3/8X18 | 5'-0 1/4 | | 4229 |
| | | 40 | s2 | PL 3/8X6 | 5'-0 1/4 | | 2819 |
| | | 20 | s3 | PL 3/8X27 | 3'-0 1/4 | | 2081 |
| | | 20 | s5 | PL 1X18 | 6'-0 1/4 | | 7376 |
| | | 40 | s6 | PL 1X6 | 6'-0 1/4 | | 4918 |
| | | 20 | s7 | PL 3/8X27 | 4'-6 1/4 | | 3116 |
| | | 20 | fp1 | PL 1X18 | 2'-6 | | 3063 |
| | | | | (10 FOR GIRDER ASSY, 10 SHIP LOOSE) | | | |
| | | 20 | fp2 | PL 1/2X18 | 3'-0 | | 919 |
| | | | | (10 FOR GIRDER ASSY, 10 SHIP LOOSE) | | | |
| | | 40 | SEE DETAIL | PL 3/8X8 | 2'-8 | | 2700 |
| | | 40 | SEE DETAIL | PL 1/2X6 | 2'-8 | | 3086 |
| | | 4 | dp1 | PL 1/2X3 1/2 | 1'-0 | | 5 |
| | | 4 | dp2 | PL 1/2X4 1/2 | 1'-0 | | 6 |
| | | 68 | | W24X55 | 7'-4 1/2 | | 27883 |
| | | 8 | | W24X65 | 7'-4 1/2 | | 3245 |

| FINISH | | | |
|--------------|--------------------|---|---------------|
| MATERIAL | ASTM A708 GRADE 50 | | |
| HOLES | 15/16" U.O.N. | | |
| ELECTRODES | | | |
| WELDS | PER WPS | | |
| SURFACE PREP | | 5/15/12 | PER APPROVAL |
| | | NO | DATE |
| | | | DESCRIPTION |
| | | | REVISIONS |
| | | ADVANCED RESOURCES & CONST. ENTERPRISES, INCORPORATED P.O. BOX 120 KINGFIELD, ME 04947 PHONE: (207) 265-2646 - FAX: (207) 265-4054 | |
| DRAFTER | JAC | MISC. DETAILS | CONTRACT NO. |
| DATE | 4/11/12 | VERMONT AGENCY OF TRANSPORTATION, NEWPORT CITY, CO. OF OREGON'S | BRD 1449 (25) |
| CHECKED | JS | RAILROAD SQUARE, TH11 (CLASS 2) MAJOR COLLECTOR, BRIDGE NO. 9 | DWG. NO. |
| JOB # | 12-100 | CUSTOMER: REED & REED | 26 |