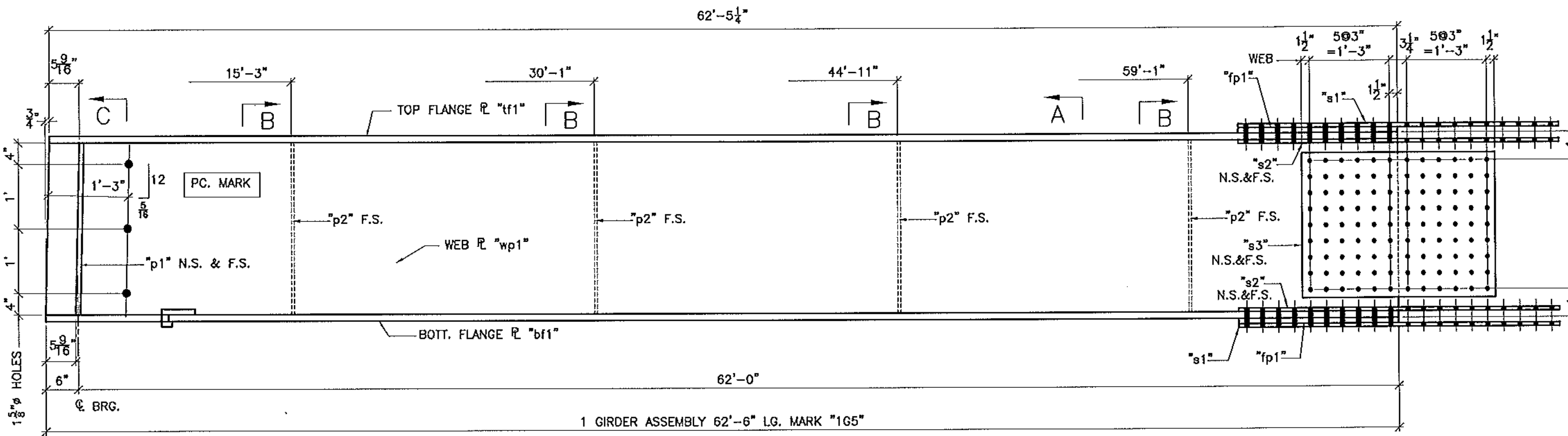
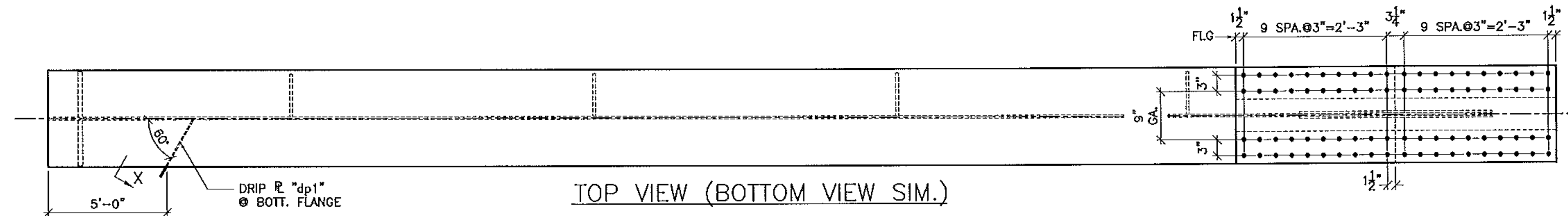


BILL OF MATERIAL

SHIP	SHIP MARK	NO. PCS.	PIECE MARK	DESCRIPTION	LENGTH	REMARKS	WT.
1	1G5			BRIDGE GIRDER			
		1	wp1	R 1/2 X 32	62'-6"		3403
		1	tf1	R 1 1/2 X 18	62'-5 1/4"		4788
		1	bf1	R 1 1/2 X 18	62'-6"		4788
		2	p1	SEE SHT. 26			
		4	p2	SEE SHT. 26			
		2	s1	SEE SHT. 26			
		4	s2	SEE SHT. 26			
		2	s3	SEE SHT. 26			
		2	fp1	SEE SHT. 26			



GIRDER WT: 14,997

Vermont Agency of Transportation
RECEIVED

CK'D BY GFR OK'D BY
05/15/2012
RESUBMIT APPROVED X
BY C. CARLSON DATE 05/16/2012

SEE .dxf FILES FOR WEB R CUTTING
SEE SHEET 26 FOR PIECE DETAILS
SEE SHEET B1 FOR NOTES

FINISH	NO.	DATE	DESCRIPTION	BY
MATERIAL AASHTO M270 (ASTM A709) GRADE 50				
HOLES 15/16" U.O.N.				
ELECTRODES				
WELDS PER WPS				
SURFACE PREP		5/15/12	PER APPROVAL	JAC

ARC
ADVANCED RESOURCES & CONST. ENTERPRISES, INCORPORATED
P.O. BOX 120 KINGFIELD, ME, 04947
PHONE: (207) 265-2648 - FAX: (207) 265-4054

STRINGER DETAILS
DRAFTER JAC DATE 4/11/12 CHECKED JS JOB # 12-100

CONTRACT NO. BRO 1449 (25)
VERMONT AGENCY OF TRANSPORTATION, NEWPORT CITY, CO. OF ORLEANS RAILROAD SQUARE, B11 (CLASS 2) MAJOR COLLECTOR, BRIDGE NO. 9
DWG. NO. 5

