

**BILL OF MATERIAL**

SHIP	SHIP MARK	NO. PCS.	PIECE MARK	DESCRIPTION	LENGTH	REMARKS	WT.
1	1G3			BRIDGE GIRDER			
		1	wp1	1/2" X 32	62'-6"		3403
		1	fl1	1/2" X 18	62'-5 1/2"		4788
		1	bf1	1/2" X 18	62'-6"		4788
		2	p1	SEE SHT. 26			
		4	p3	SEE SHT. 26			
		4	p5	SEE SHT. 26			
		2	s1	SEE SHT. 26			
		4	s2	SEE SHT. 26			
		2	s3	SEE SHT. 26			
		2	fp1	SEE SHT. 26			

GIRDER WT: 15,147

Vermont Agency of Transportation  
**RECEIVED**

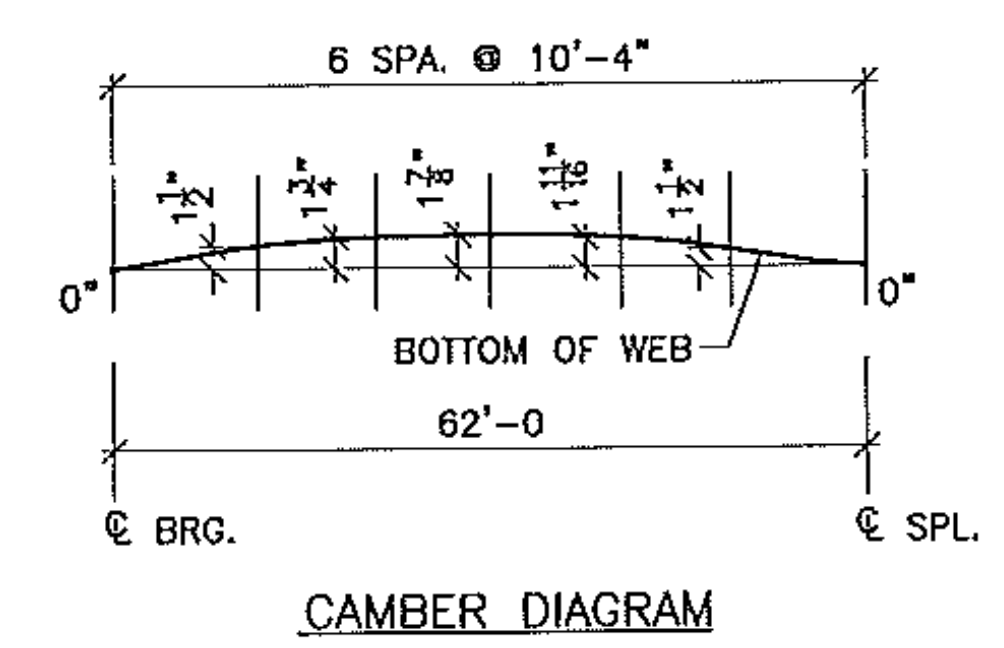
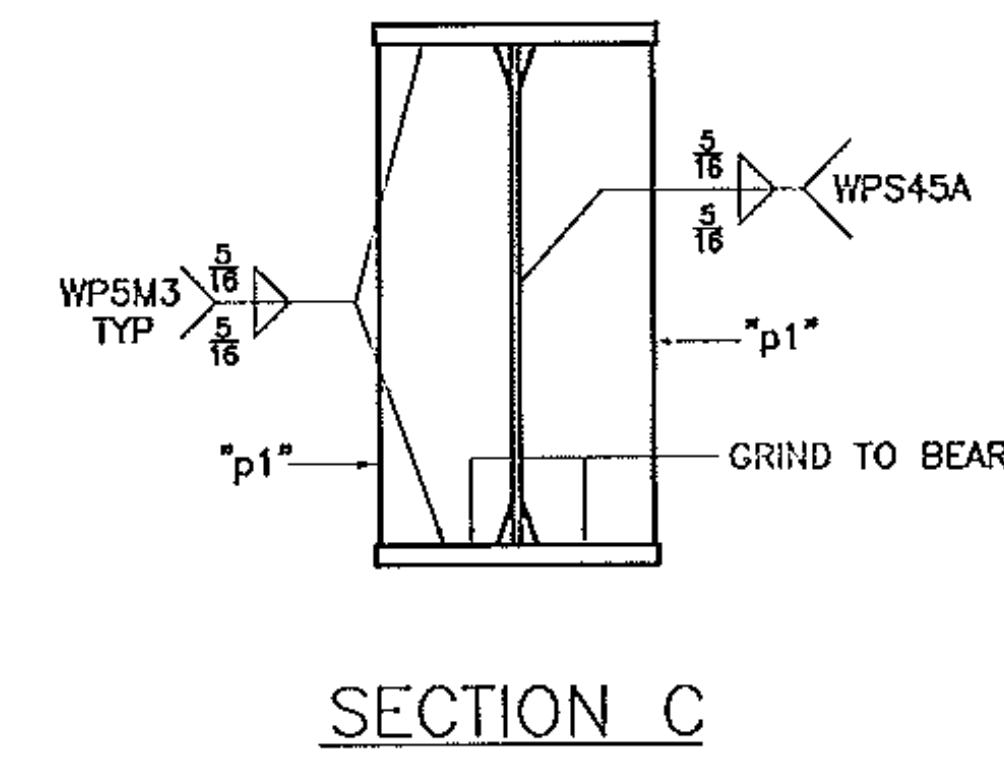
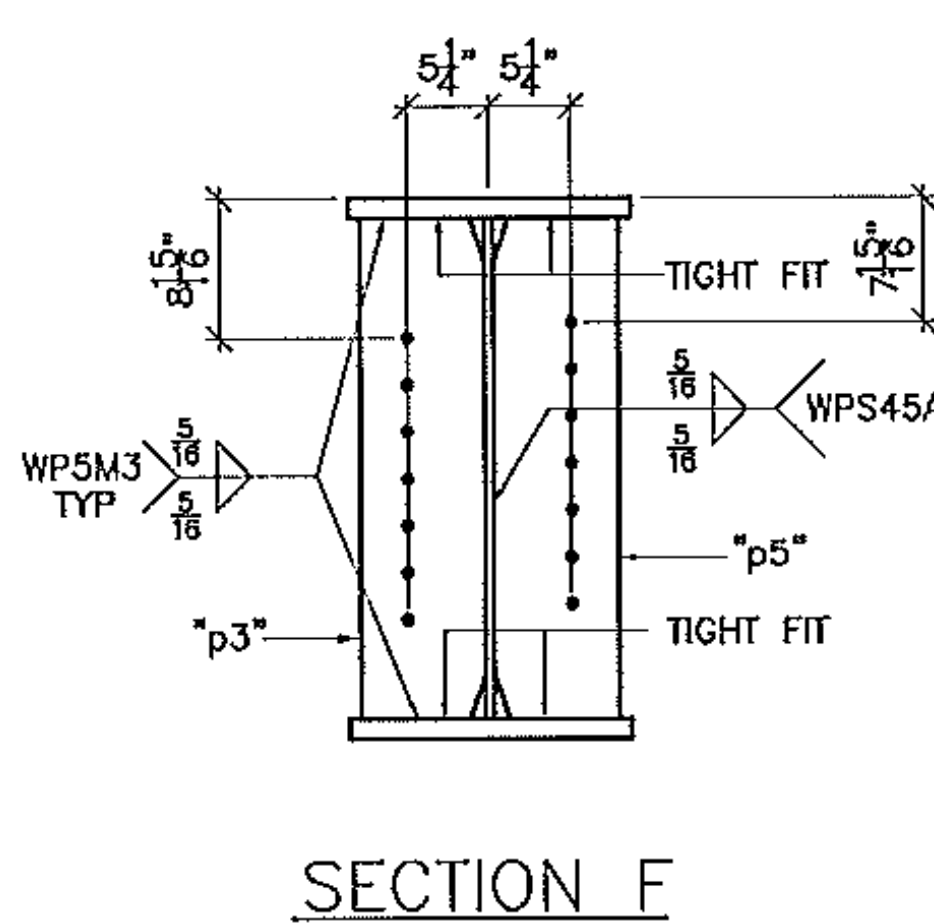
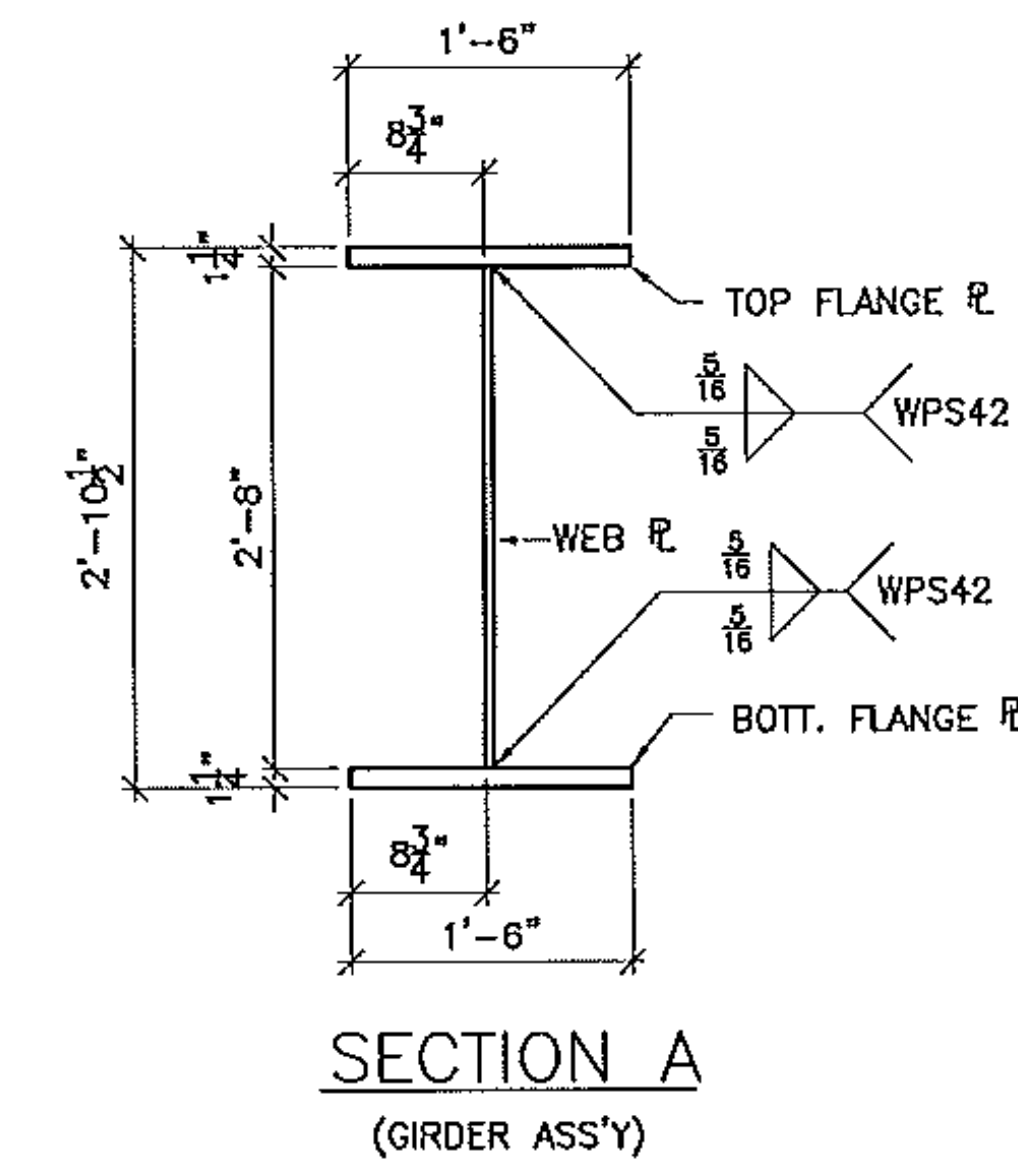
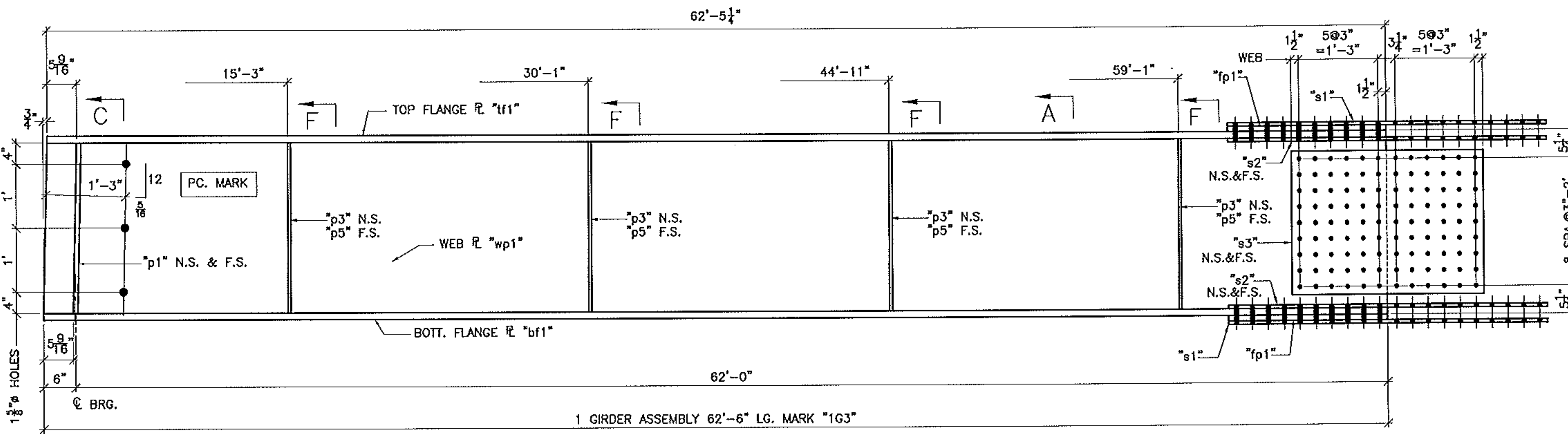
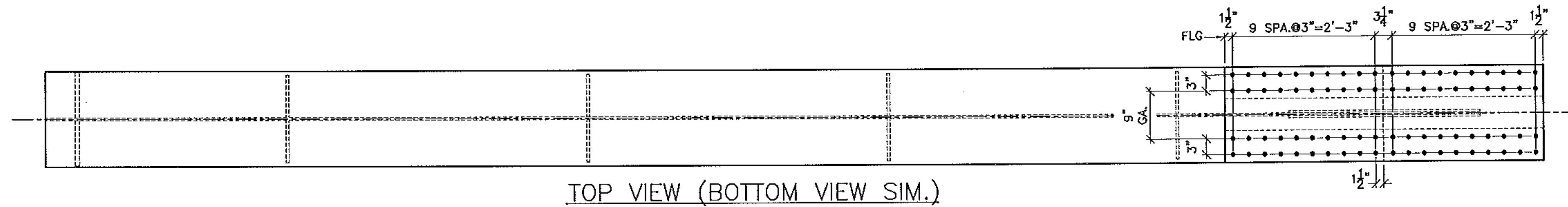
CK'D BY GFR OK'D BY \_\_\_\_\_  
05/15/2012

RESUBMIT \_\_\_\_\_ APPROVED X \_\_\_\_\_  
BY C. CARLSON DATE 05/16/2012

SEE .dxf FILES FOR WEB R CUTTING  
SEE SHEET 26 FOR PIECE DETAILS  
SEE SHEET B1 FOR NOTES

FINISH			
MATERIAL	AASHTO M270 (ASTM A709) GRADE 50		
HOLES	15/16" U.O.L.		
ELECTRODES			
WELDS	PER WPS		
SURFACE PREP		5/15/12	PER APPROVAL
		NO DATE	JAC BY

	<b>ADVANCED RESOURCES &amp; CONST. ENTERPRISES, INCORPORATED</b> P.O. BOX 120 KINGFIELD, ME. 04947 PHONE: (207) 265-2646 - FAX: (207) 265-4054	
	DRAFTER JAC DATE 4/11/12 CHECKED JS JOB # 12-100	<b>STRINGER DETAILS</b> VERMONT AGENCY OF TRANSPORTATION, NEWPORT CITY, CO. OF ORLEANS RAILROAD SQUARE, 1011 (CLASS 2) MAJOR COLLECTOR, BRIDGE NO. 9 C.C. REED & REED



JAC DRAWING/S1812/03

PDF created with FinePrint pdfFactory trial version <http://www.pdffactory.com>