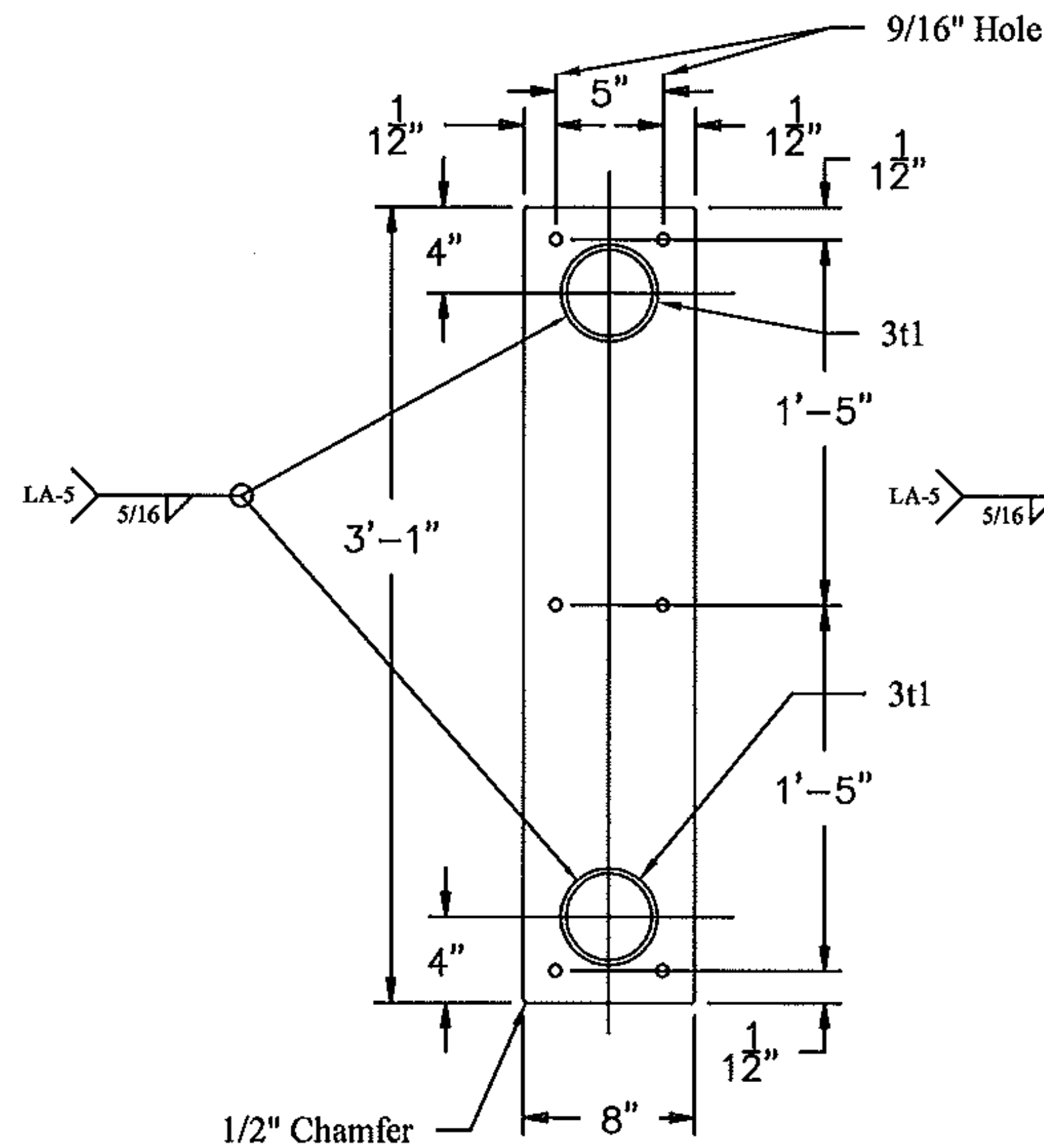
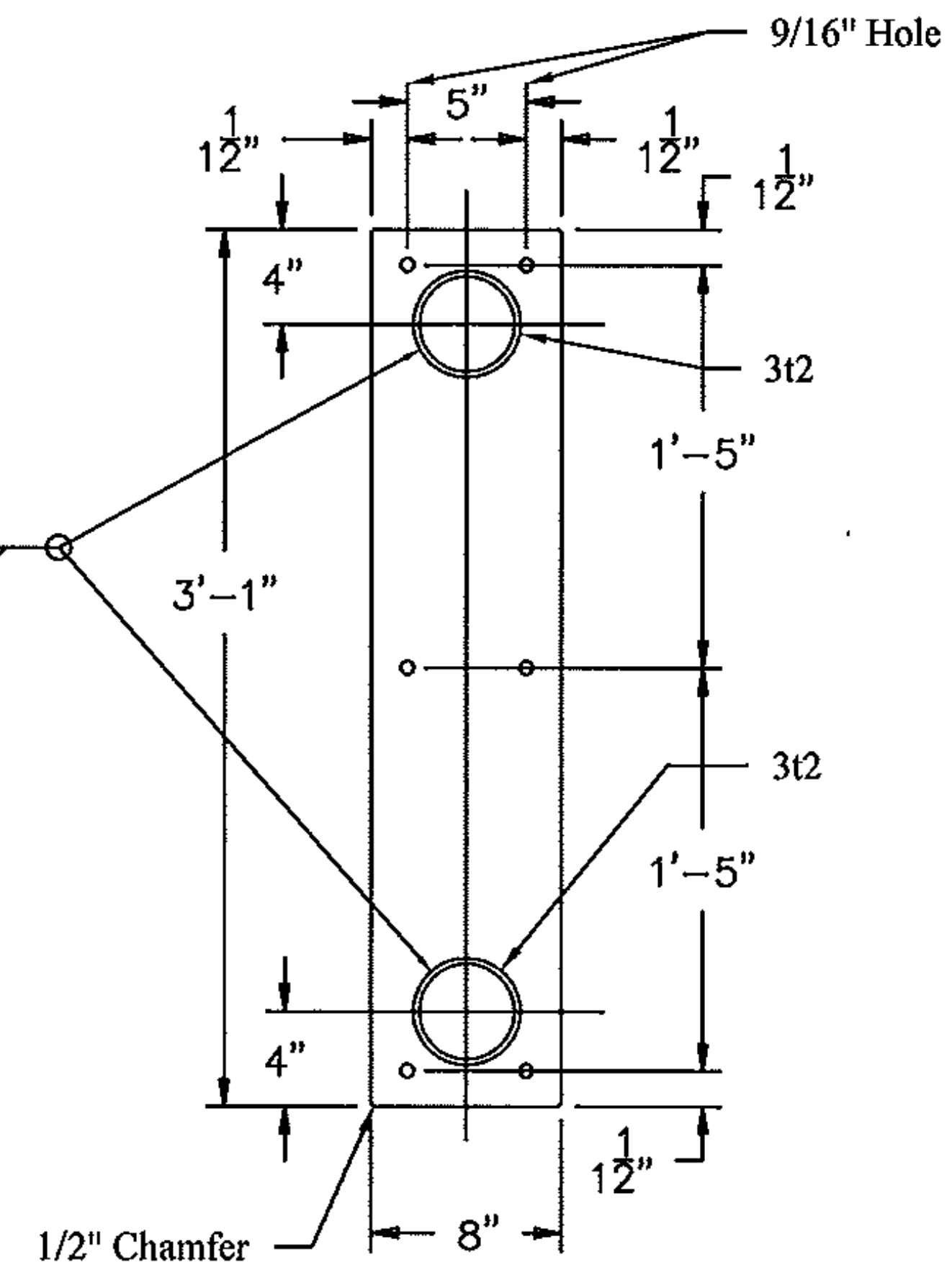


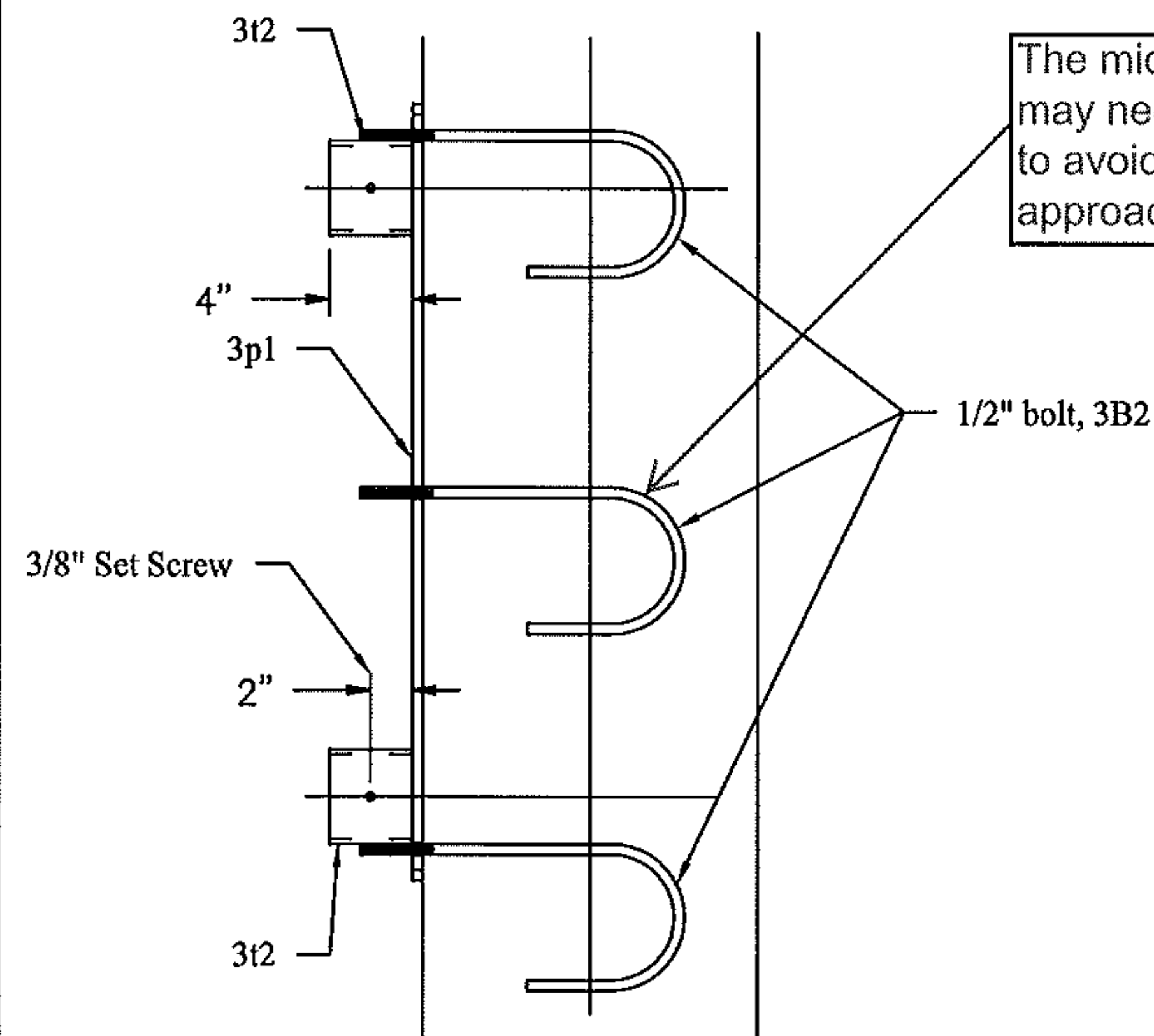
(62) - 3C1 POST CONNECTION STANDARD



(62) - 3p1 and (124) - 3t1 Detail

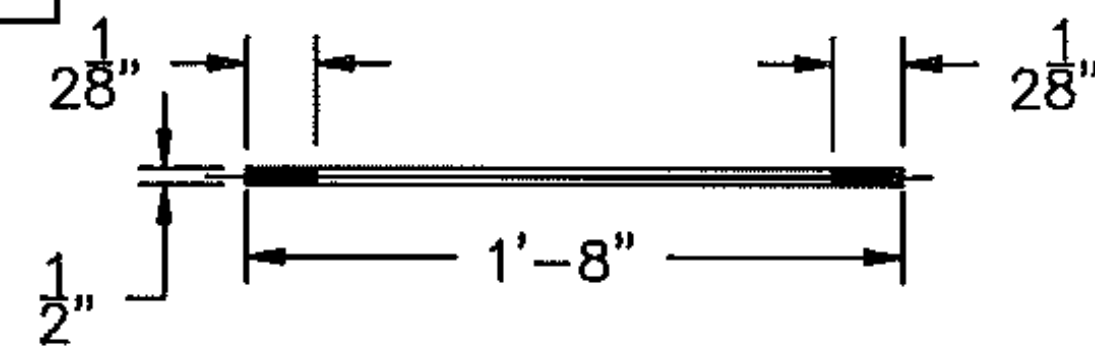


(66) - 3p1 and (132) - 3t2 Detail

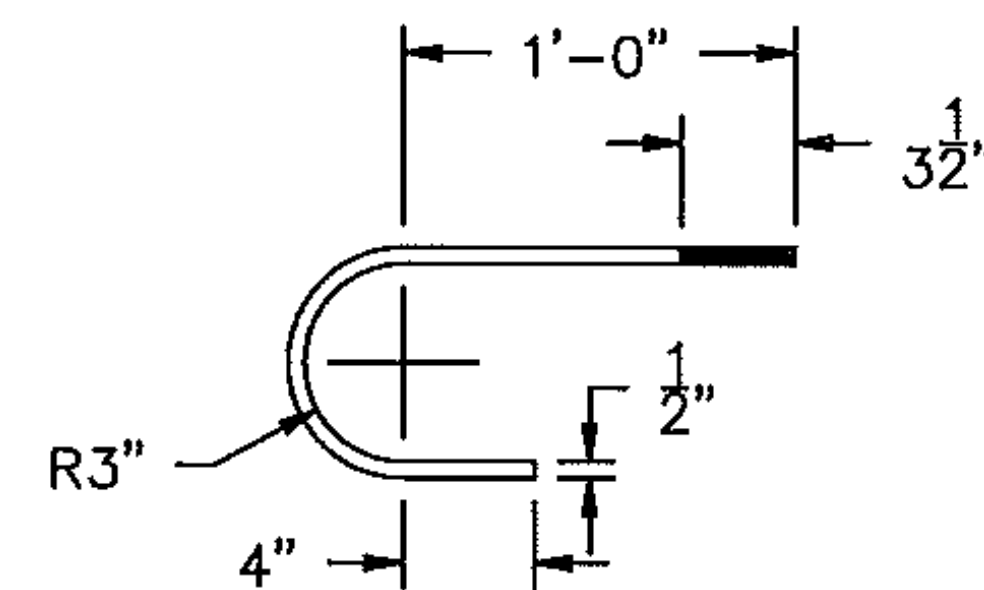


(4) - 3C2 POST CONNECTION END

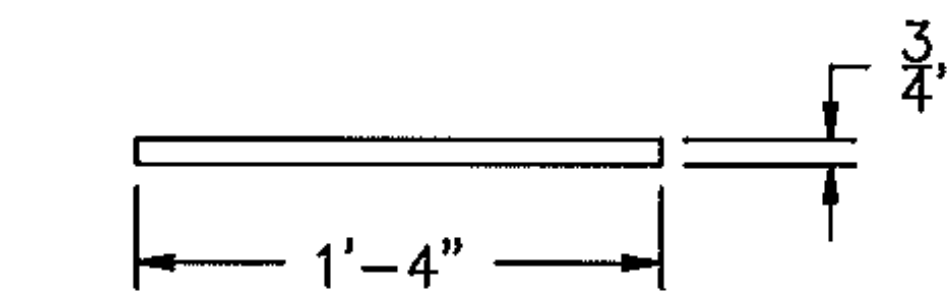
The middle hook bolt may need to be rotated to avoid box beam approach rail block out.



(372) - 3B1 THRU BOLT DETAIL



(24) - 3B2 HOOK BOLT DETAIL



(372) - 3t3 PIPE SLEEVE DETAIL

BILL OF MATERIALS				
QTY	MARK	SHAPE	LENGTH	REMARKS
372	3B1	1/2" THRU BOLT & SLEEVE		
372	3t3	Pipe 1/2" x Sched 40	1'-4"	
372		1/2" Anchor Bolt x 1'-8" Lg with 2 - 1/2" Steel Hex Nuts		
24	3B2	1/2" HOOK BOLT		
24		1/2" Anchor Bolt x 2'-3" Lg with 1 - 1/2" Steel Hex Nuts		
62	3C1	POST CONNECTION STD		
372	3B1	1/2" Thru Bolt & Sleeve		
124	3p1	Plate 1/2" x 8"	3'-1"	
124	3t1	Pipe 4" x Sched 40	0'-4"	
124	3t2	Pipe 4" x Sched 40	0'-4"	
124		3/8" Set Screws		
4	3C2	POST CONNECTION END		
24	3B2	1/2" Hook Bolt		
4	3p1	Plate 1/2" x 8"	3'-1"	
8	3t2	Pipe 4" x Sched 40	0'-4"	
8		3/8" Set Screws		

Vermont Agency of Transportation

RECEIVED

CK'D BY David Peterson OK'D BY G. ROY

Oct 04, 2012

RESUBMIT APPROVED AS NOTED

BY C. CARLSON DATE 10/12/12

DRAWING COVERS	
ORNAMENTAL BRIDGE RAIL POST DETAILS	
PROJECT	NEWPORT CITY BRO 1449(25)
LOCATION	RAILROAD SQUARE OVE FLAKE MEMPHREMOOG
ENGINEER	VERMONT AGENCY OF TRANSPORTATION
CUSTOMER	REED & REED, INC.

MERRIMACK SHEET METAL

119 HALL STREET
CONCORD NH 03301

Tel. 603.224.7766
Fax 603.224.7925

DRAWN BY:
RL

CHECKED BY:
JD

JOB NO:
#4255

DWG:
F3

REV NO.	DATE	DESCRIPTION
0	4-4-2012	SUBMITTED FOR APPROVAL
HOLES AS NOTED		
MATERIAL: AASHTO M 270 GRADE 250 GALV PAINTED BLACK		