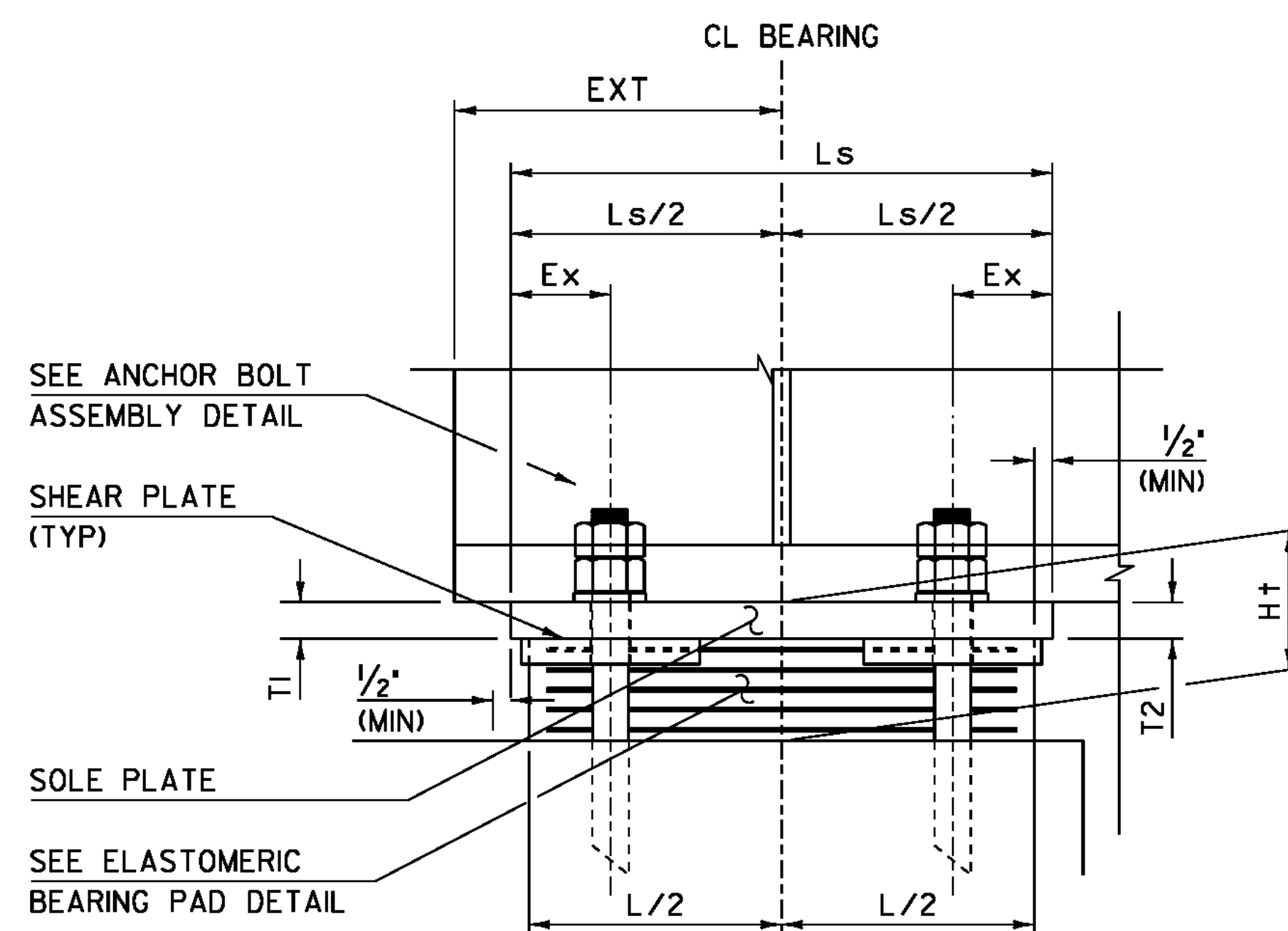
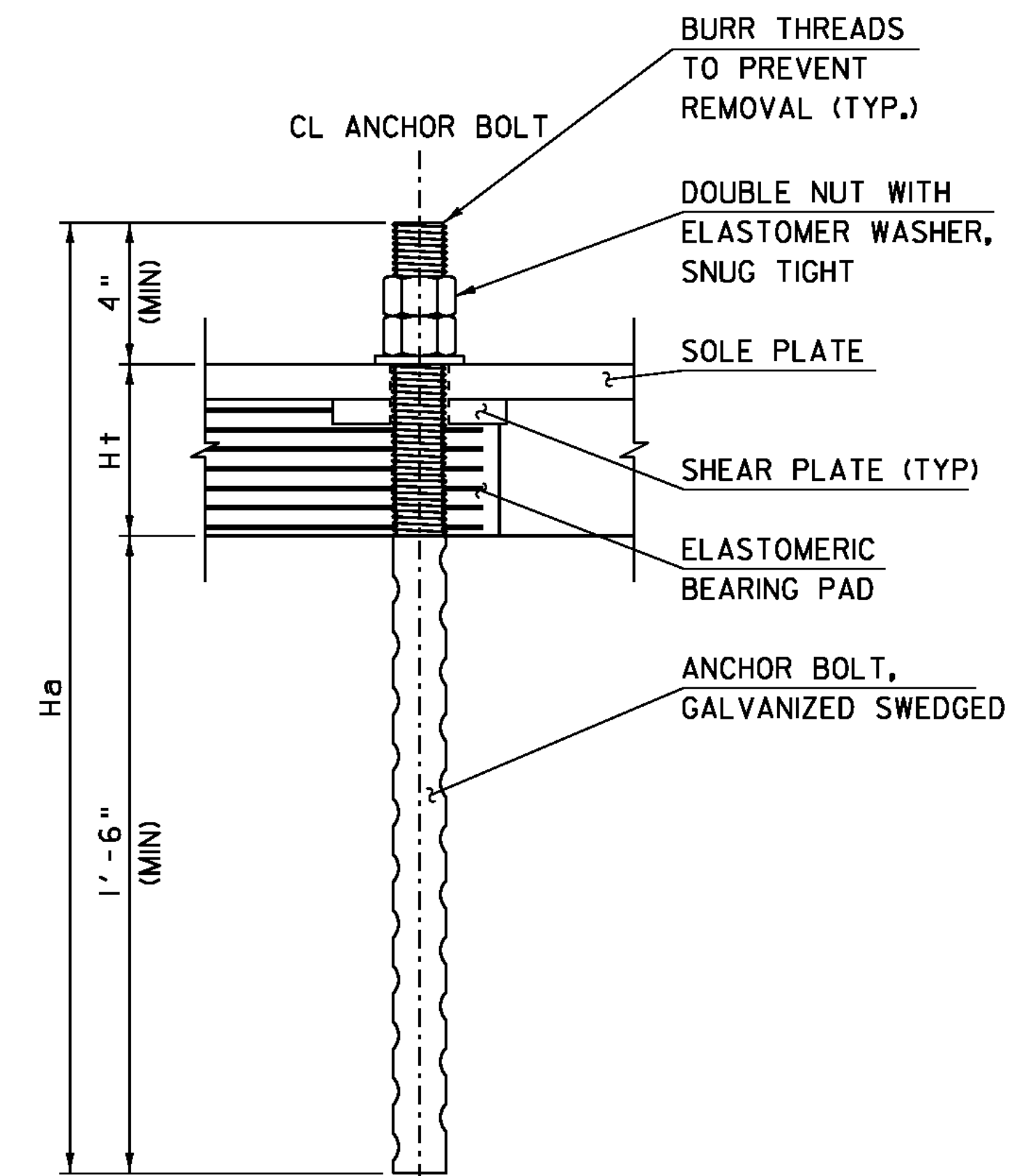


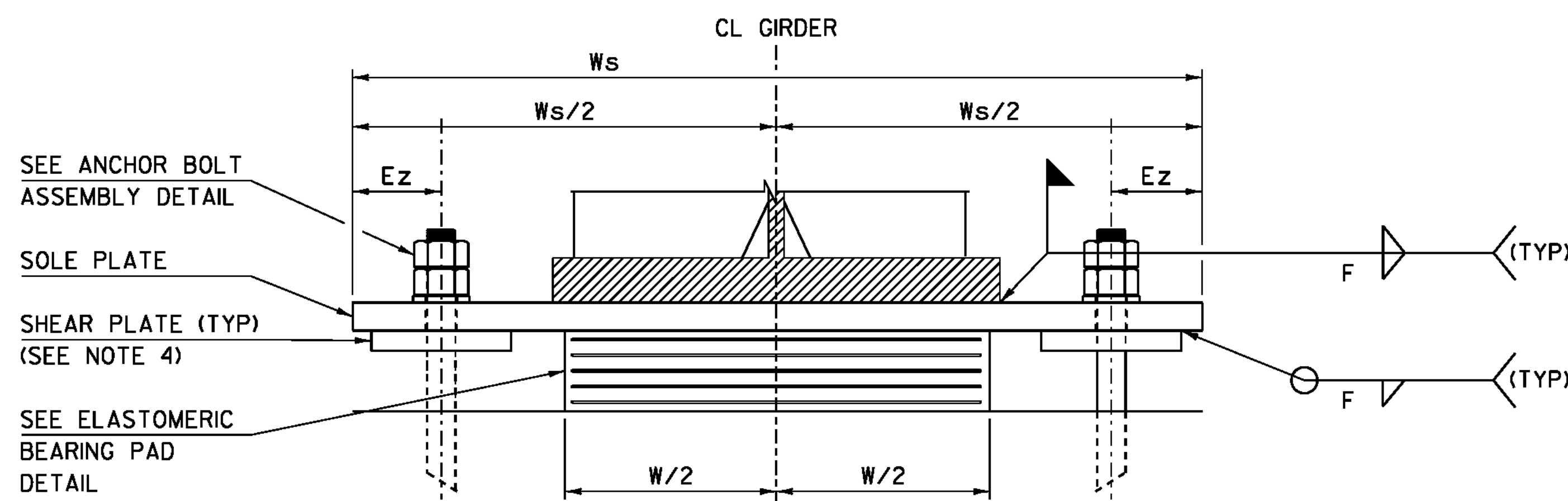
FIXED PIER BEARING TYPICAL PLAN
(NTS)



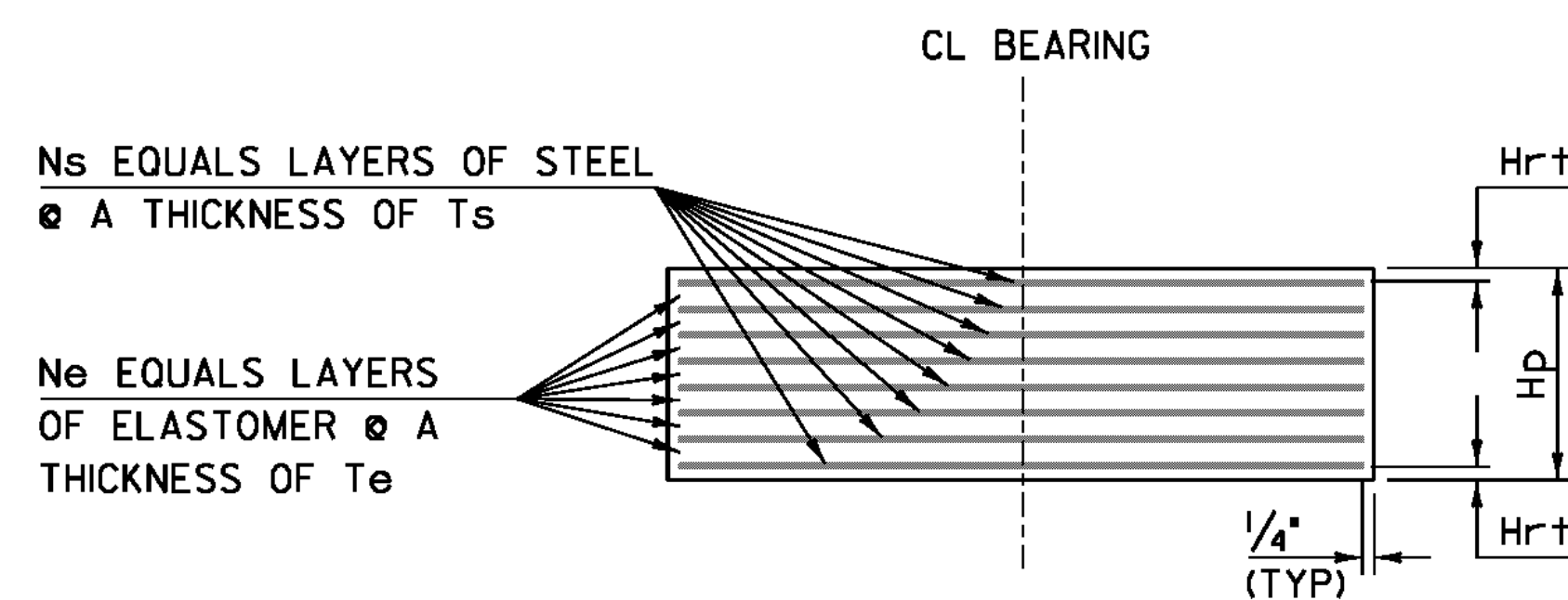
FIXED PIER BEARING TYPICAL SECTION
(NTS)



ANCHOR BOLT ASSEMBLY DETAIL
(NTS)



FIXED PIER BEARING TYPICAL ELEVATION
(NTS)



ELASTOMERIC BEARING PAD DETAIL
(NTS)

NOTES

1. THE TOTAL HEIGHT OF THE ELASTOMER LAYERS AND STEEL LAMINATIONS: $H_p = 2(H_{rt}) + N_s(T_s) + N_e(T_e)$
2. THE TOTAL HEIGHT OF THE ANCHOR BOLT: $H_a = (1'-6") + H_{rt} + (4")$
3. VERIFY THAT BRIDGE SEAT WIDTH PROVIDES SUFFICIENT CONCRETE COVER FOR ANCHOR BOLTS.
4. SHEAR PLATES (TO REINFORCE SOLE PLATE) ARE 5" X 5" X 3"
5. $DIA.h = DIA.a + 3/8"$

FIXED ELASTOMERIC BEARING TABLE

LOCATION	QUANTITY REQUIRED	DL+SDL (kips)	LL W/O IMP. (kips)	TOTAL DESIGN REACTION (kips)	ELASTOMERIC PAD								ANCHOR BOLTS		ANCHOR BOLT HOLES			WELD SIZE		SOLE PLATE				BRG. Ht
					L	W	Ns	Ts	Ne	Te	Hrt	Hp	STUDS/BRG.	DIA.a	Ha	DIA.h	Ez	Ex	F	Ws	Ls	T1	T2	
PIER #1	5	109.6	128.1	237.7	14.25"	18"	8	0.0625"	7	0.5"	0.25"	4.5"	4	1 1/2"	28"	1 7/8"	3.5"	3.5"	5/16"	33"	16.25"	1"	1.25"	5.625"
PIER #2	5	109.6	128.1	237.7	14.5"	20.5"	6	0.0625"	5	0.625"	0.375"	4.25"	4	1 1/2"	28"	1 7/8"	3.5"	3.5"	5/16"	35.5"	16.5"	1"	1"	5.25"

PROJECT NAME: NEWPORT CITY
PROJECT NUMBER: BRO 1449(25)

FILE NAME: 96J314bear1ng.dgn
PROJECT LEADER: C. CARLSON
DESIGNED BY: D. PETERSON
PIER BEARINGS DETAIL SHEET

PLOT DATE: 22-NOV-2011
DRAWN BY: C. MOONEY
CHECKED BY: D. PETERSON
SHEET 39 OF 75