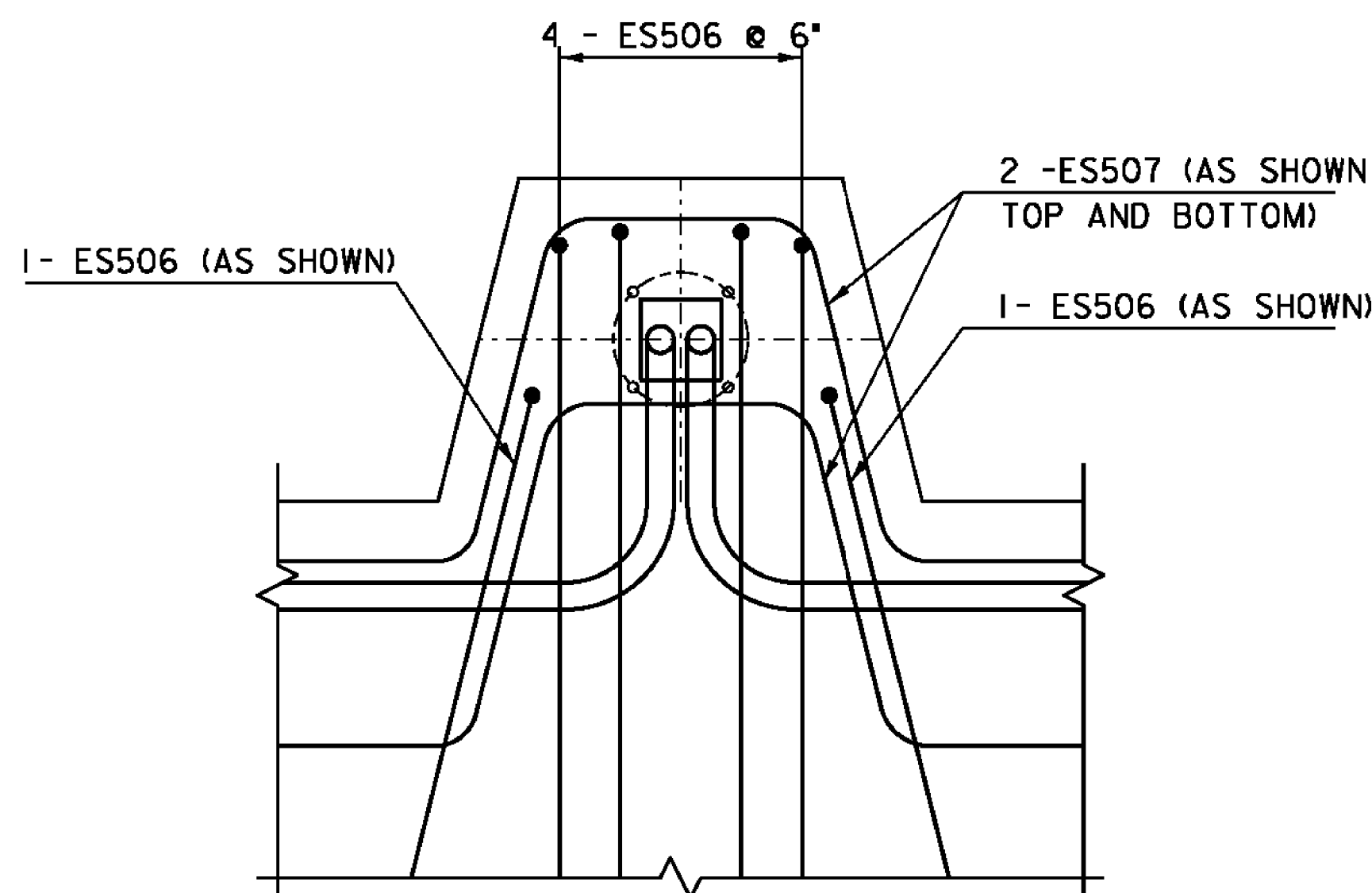
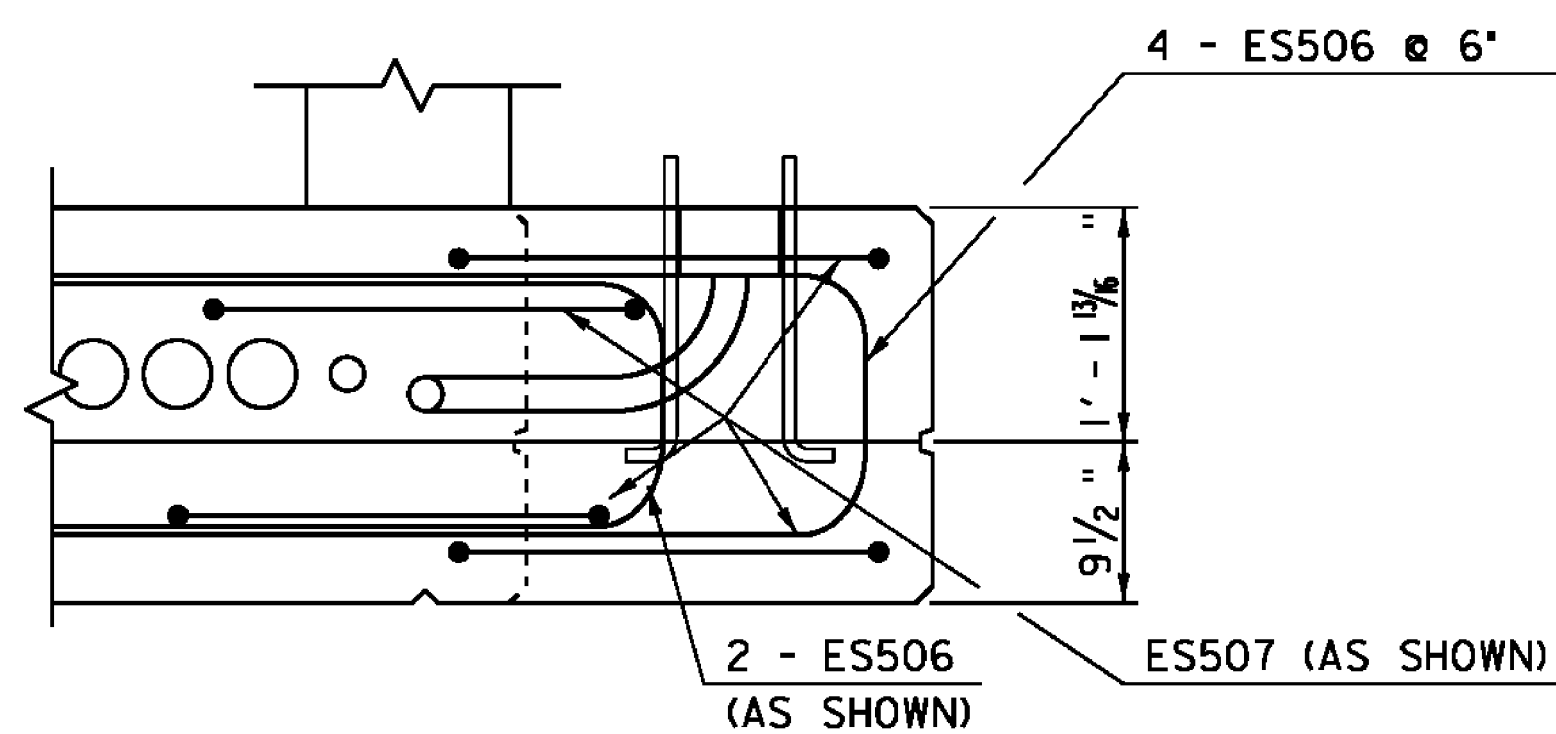


BRIDGE LIGHT BULB-OUT
PLAN VIEW
 SCALE 1"= 1'-0"



BRIDGE LIGHT BULB-OUT
REINFORCING PLAN VIEW
 SCALE 1"= 1'-0"



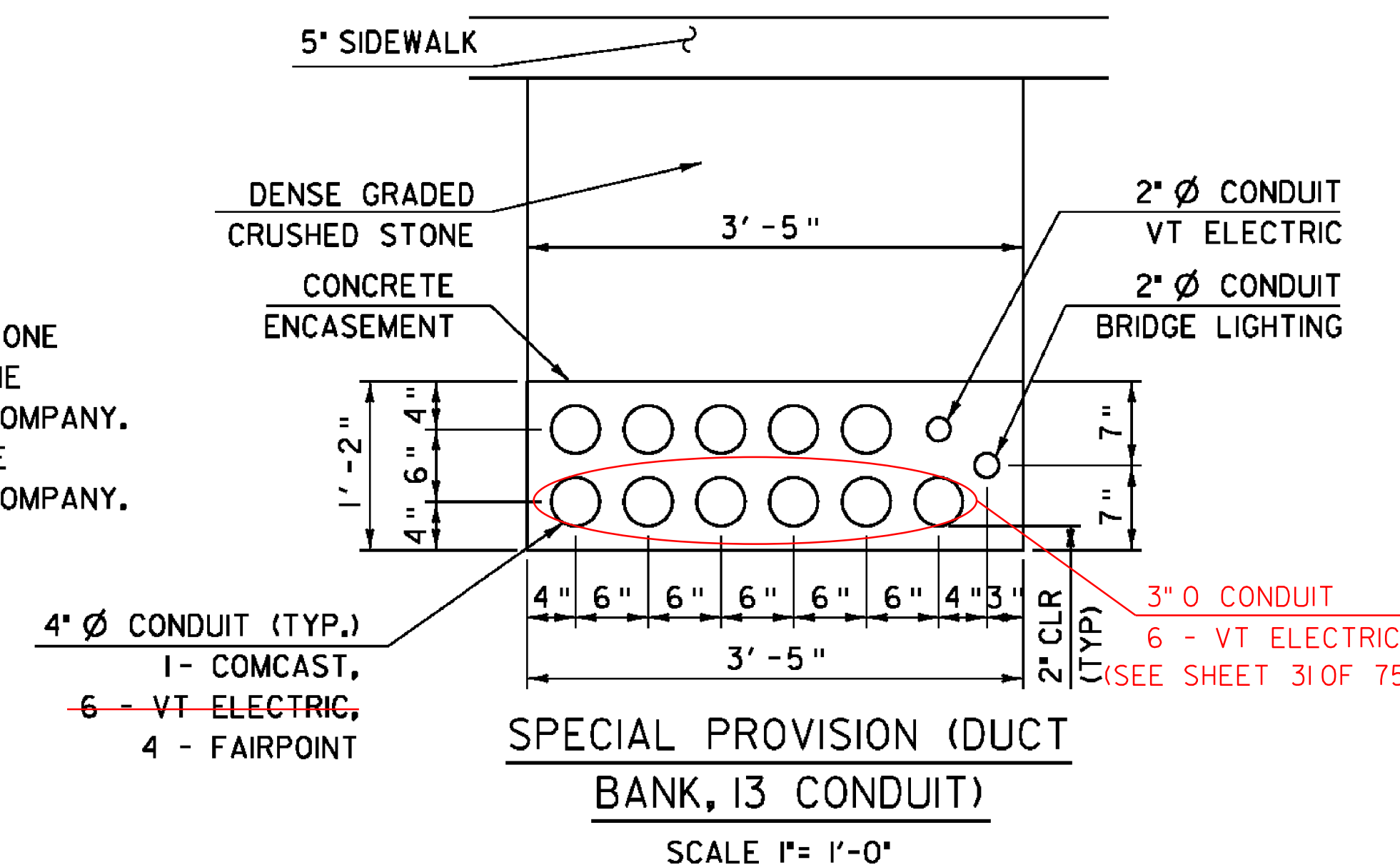
BRIDGE LIGHT BULB-OUT
CROSS SECTION
 SCALE 1"= 1'-0"

BRIDGE LIGHT NOTES:

1. THE SCOPE OF WORK IS TO PROVIDE ALL LABOR, MATERIALS, SERVICES, SUPPLIES, TOOLS, EQUIPMENT, TRANSPORTATION, AND FACILITIES NECESSARY TO FURNISH AND INSTALL COMPLETE ELECTRICAL WORK AS CALLED FOR ON THE DRAWINGS SPECIFIED, OR AS MAY REASONABLY BE IMPLIED, AS BEING INCIDENTAL TO THIS WORK.
2. ALL MATERIALS AND INSTALLATION SHALL BE IN ACCORDANCE WITH THE LATEST EDITION OF THE NATIONAL ELECTRIC CODE, AND ALL CODES, REGULATIONS AND OTHER REQUIREMENTS OF ALL MUNICIPAL, STATE, FEDERAL, UTILITY, AND OTHER PUBLIC OR PRIVATE AUTHORITIES WHICH HAVE JURISDICTION. IN EACH CASE, CODES ARE MINIMUM REQUIREMENTS.
3. FABRICATION DRAWINGS: SUBMIT COMPLETE CATALOG INFORMATION FOR ALL MATERIALS AND EQUIPMENT TO BE PURCHASED AND USED ON THE PROJECT AS SPECIFIED ON THE DRAWINGS AND AS REQUIRED BY SUBSECTION 679.02. DO NOT INSTALL MATERIALS OR EQUIPMENT WITHOUT APPROVAL BY THE ENGINEER. UNAPPROVED MATERIAL ALREADY INSTALLED SHALL BE SUBJECT TO REMOVAL AND REPLACEMENT WITH APPROVED MATERIALS AT THE CONTRACTOR'S OWN EXPENSE.
4. MATERIALS AND EQUIPMENT SHALL BE LISTED BY UNDERWRITERS' LABORATORIES AND SHALL BE INSTALLED IN ACCORDANCE WITH SUCH LISTINGS.
5. INSTALLATION SHALL BE MADE IN ACCORDANCE WITH MANUFACTURER'S RECOMMENDATIONS.
6. CONTRACTOR TO CONTACT VERMONT ELECTRIC FOR COORDINATION OF NEW ELECTRICAL SERVICE. SEE UTILITY SPECIAL PROVISIONS FOR CONTACT TELEPHONE NUMBER.
7. METER/DISCONNECT STANCHIONS SHALL INCLUDE MAIN SERVICE DISCONNECT (2 POLE, 80A, 240V SINGLE PHASE) AND (6)SIX BRANCH CIRCUIT BREAKERS (1POLE, 20A, 120V). ALL SERVICE ENTRANCE EQUIPMENT SHALL BE RATED 22KAIC (MIN).
8. MAXIMUM OF 270 DEGREES IN TOTAL BEND SHALL BE PERMITTED IN SINGLE RUN OF CONDUIT.
9. LIGHTS SHALL BE FUSED AT BASE WITH Y-TYPE FUSE KIT (EQUIVALENT OF HOMAC/FLOOD SEAL: FYC-6 AND 10 AMP FUSE).
10. UTILIZE DUAL-RATED PARALLEL TAP CONNECTORS AT BASE EQUIVALENT TO ILSCO GTA SERIES WITH INSULATED COVERS.
11. CONTRACTOR TO VERIFY DEPTH REQUIREMENTS FOR ANCHOR BOLTS PRIOR TO PLACEMENT OF DECK CONCRETE
12. THE FINISH FOR BOTH THE POLE, BASE, AND LUMINAIRE BRACKET SHALL BE PHILIPS LUMEC GN4/TX.

DUCT BANK NOTES:

1. THE CONTRACTOR SHALL SUPPLY AND INSTALL ONE PULL ROPE FOR EACH CONDUIT THAT MEETS THE SPECIFICATIONS OF THE APPROPRIATE UTILITY COMPANY.
2. THE INSTALLED PVC CONDUITS SHALL MEET THE SPECIFICATIONS OF THE APPROPRIATE UTILITY COMPANY.



NOTE:

- NF = NEAR FACE
- FF = FAR FACE
- EF = EACH FACE
- ▲ = CUT TO FIT IN FIELD
- 3" CLEAR, UNLESS OTHERWISE SPECIFIED ON THE PLANS.
- 2'-2" BAR LAP UNLESS OTHERWISE SPECIFIED ON THE PLANS.

PROJECT NAME: NEWPORT CITY	
PROJECT NUMBER: BRO 1449(25)	
FILE NAME: str/s96j314lighting.dgn	PLOT DATE: 02-DEC-2011
PROJECT LEADER: C. CARLSON	DRAWN BY: C. MOONEY
DESIGNED BY: D. PETERSON	CHECKED BY: D. PETERSON
LIGHTING & UTILITIES DETAILS SHEET	SHEET 35 OF 75