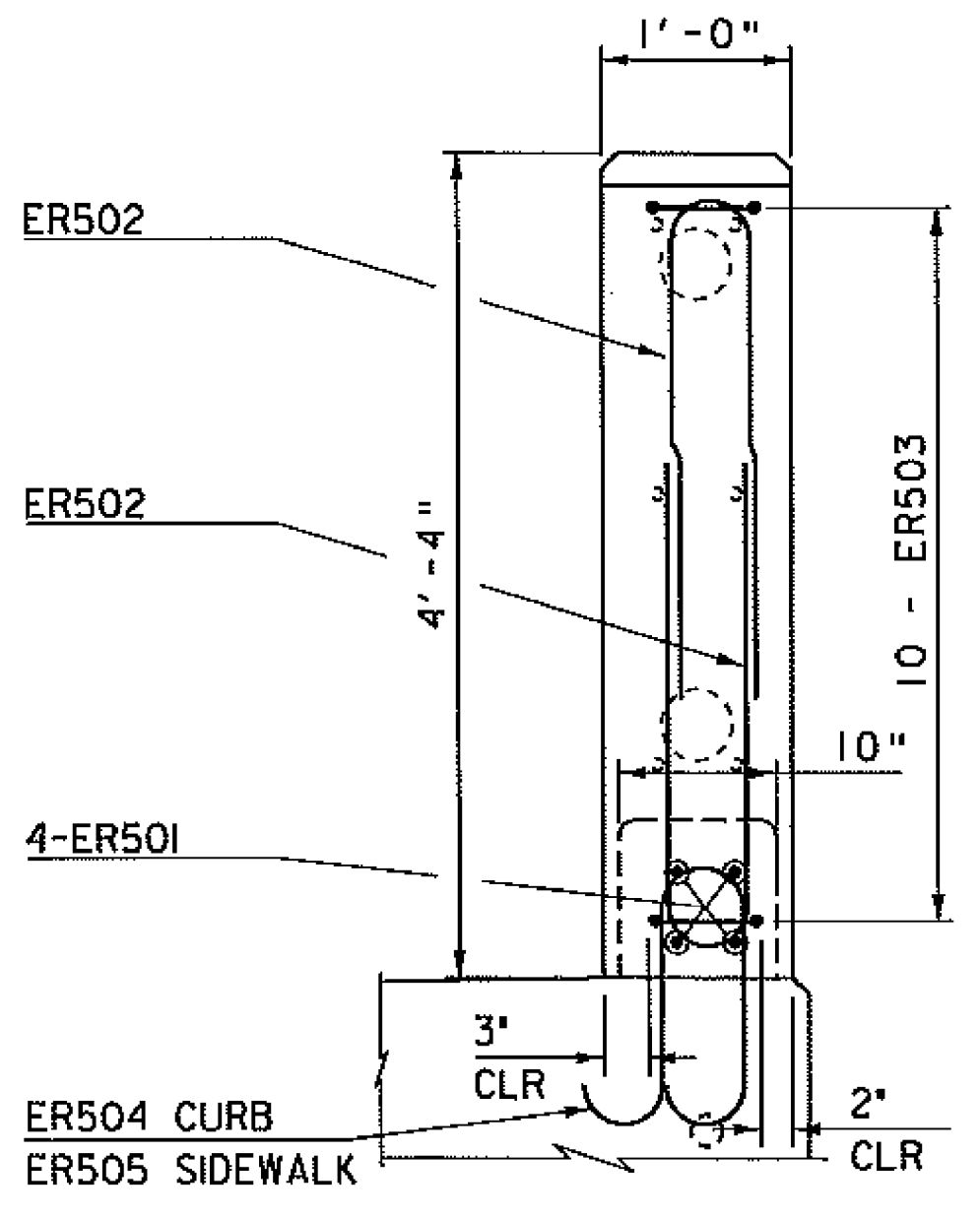


BRIDGE RAIL ELEVATION

SCALE 1/2" = 1'-0"

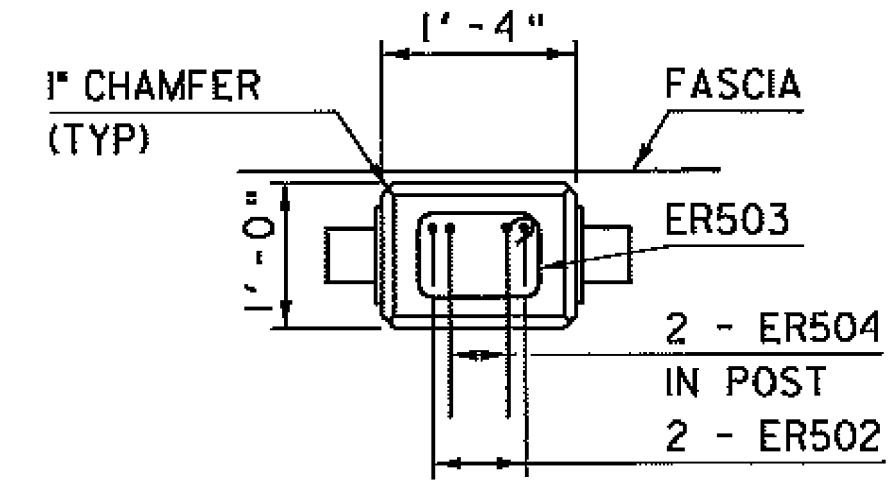
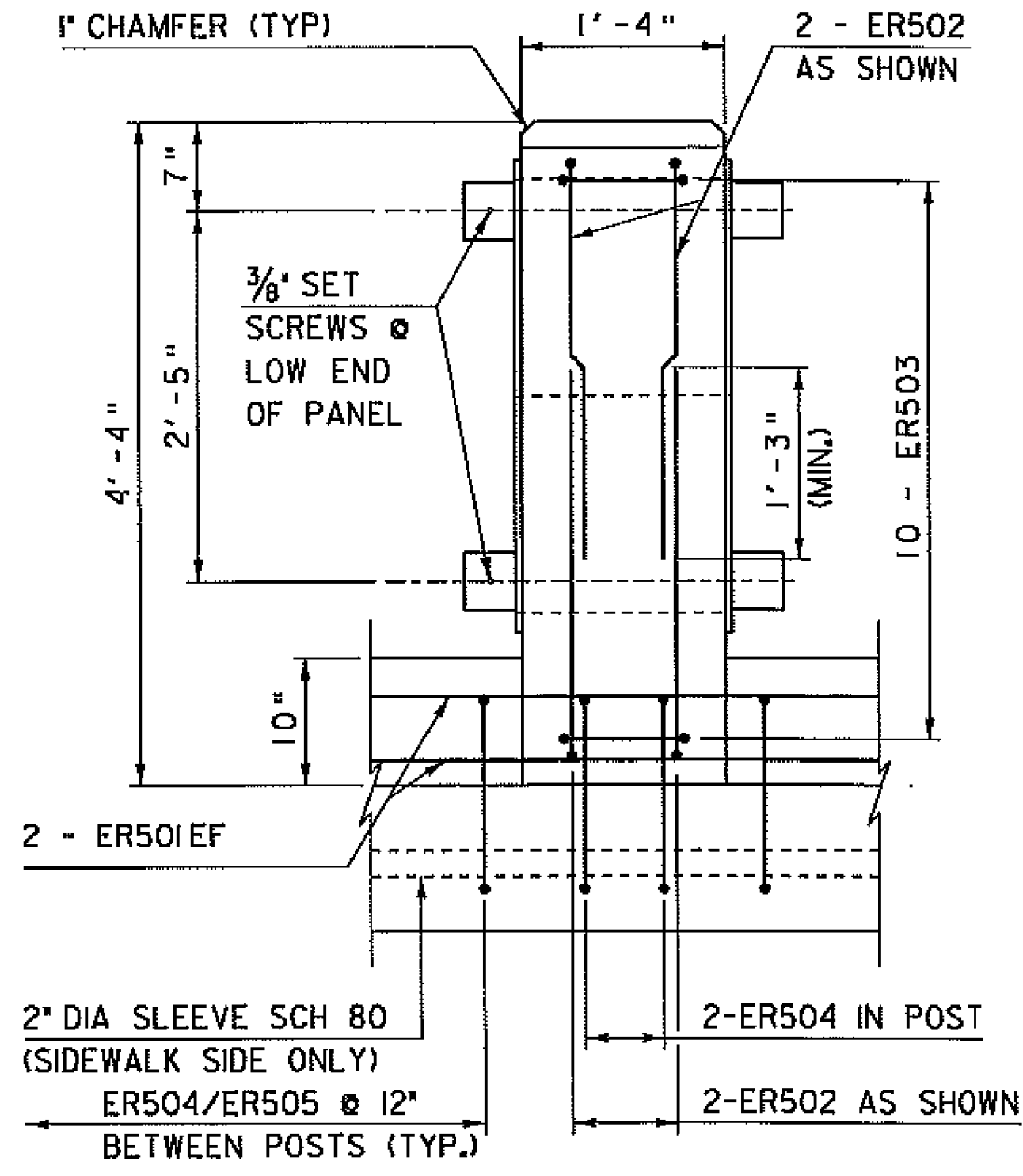
- BRIDGE RAILING NOTES**
- HOLES AND RECESSES MUST BE FORMED, PERCUSSION DRILLING IS NOT PERMITTED.
 - ALL CONCRETE FOR BRIDGE RAILING SHALL BE SPECIAL PROVISION (HIGH PERFORMANCE CONCRETE, CLASS A LOW CEMENT).
 - ALL REINFORCING STEEL FOR THE CAST IN PLACE SPECIAL PROVISION (BRIDGE RAILING, GALVANIZED METAL BALUSTER RAILING/ CONCRETE PARAPET COMBINATION) SHALL BE EPOXY, COATED, AND INCLUDED IN THE UNIT PRICE BID FOR ITEM 900.640 "SPECIAL PROVISION (BRIDGE RAILING, GALVANIZED METAL BALUSTER RAILING/ CONCRETE PARAPET COMBINATION)".
 - ALL MATERIALS AND WORK ASSOCIATED WITH THE BRIDGE RAILING SHALL BE PAID FOR UNDER ITEM 900.640 "SPECIAL PROVISION (BRIDGE RAILING, GALVANIZED METAL BALUSTER RAILING/ CONCRETE PARAPET COMBINATION)".
 - STEEL PIPE FOR TOP AND BOTTOM RAIL, AND BALUSTERS SHALL BE SEAMLESS, CONFORMING TO ASTM 53, GRADE B. BASE PLATES SHALL CONFORM TO AASHTO M 270 GRADE 250.
 - HIGH STRENGTH BOLTS AND NUTS FOR THE METAL HAND RAILING SHALL CONFORM TO ASTM 325 TYPE 1.
 - ALL METAL RAILING PIPES, POSTS, BALUSTERS, BOLTS, NUTS AND WASHERS SHALL BE GALVANIZED AFTER FABRICATION IN CONFORMANCE TO AASHTO M252 (ASTM A53) AND AASHTO M111 (ASTM A123) AND PAINTED BLACK (COLOR CHIP # 27038) ALL COMPONENTS OF THE METAL RAIL AND ITS FABRICATION INCLUDING PAINTING SHALL BE INCLUDED IN THE UNIT PRICE BID FOR ITEM 900.640 SPECIAL PROVISION (BRIDGE RAILING, GALVANIZED METAL BALUSTER RAILING/ CONCRETE PARAPET COMBINATION)
- ▲ B. THE COLLAR TO BASE PLATE WELD SHALL BE ALLOWED IN THE FIELD ONLY FOR EACH END BAY RAIL SECTION.

REV.	DESCRIPTION	DATE	REVISION BY
▲	REMOVED FIELD WELD NOTATION	3/8/2012	DRP - VAOT
	ADDED NOTE 8	3/8/2012	DRP - VAOT



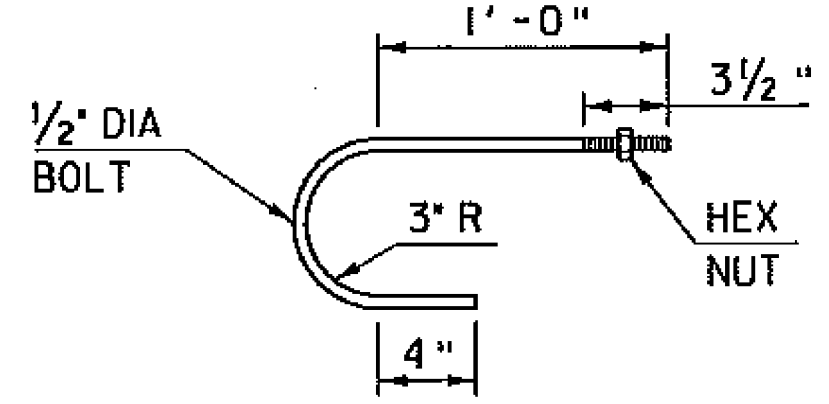
POST ELEVATION DETAILS

SCALE 1" = 1'-0"



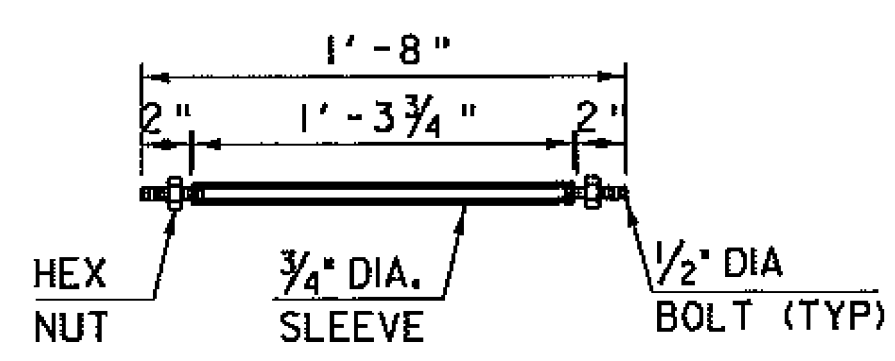
POST TYPICAL SECTION

SCALE 3/4" = 1'-0"



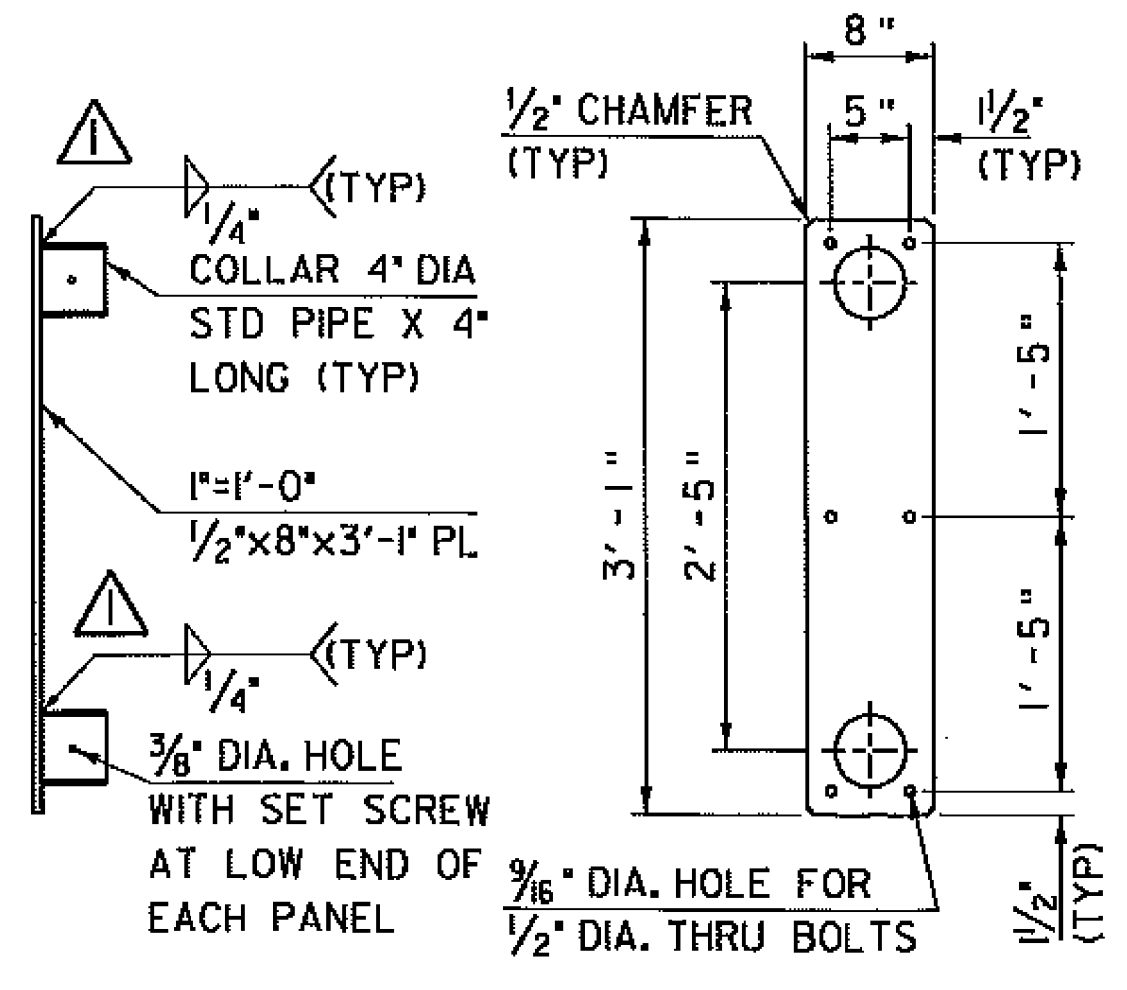
HOOK BOLT DETAIL

SCALE 1/2" = 1'-0" (USE 6 AT EACH END POST LOCATION)



THRU BOLT DETAIL

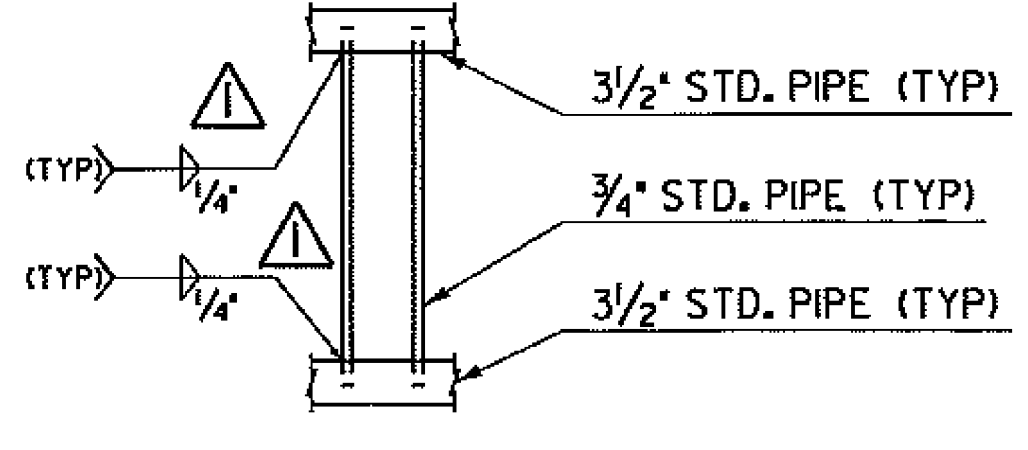
SCALE 1/2" = 1'-0" (USE 6 AT EACH INTERIOR POST LOCATION)



BASE PLATE AND COLLAR DETAIL **

1'-0"

▲ ** SEE NOTE 8



BALUSTER ELEVATION VIEW

SCALE 3/4" = 1'-0"

NOTE:

- NF = NEAR FACE
- FF = FAR FACE
- EF = EACH FACE
- ▲ = CUT TO FIT IN FIELD
- 3" CLEAR, UNLESS OTHERWISE SPECIFIED ON THE PLANS.
- 2'-2" BAR LAP UNLESS OTHERWISE SPECIFIED ON THE PLANS.

PROJECT NAME: NEWPORT CITY	PLOT DATE: 08-MAR-2012
PROJECT NUMBER: BRO 1449(25)	DRAWN BY: C. MOONEY
FILE NAME: str/96j314sup.dgn	CHECKED BY: D. PETERSON
PROJECT LEADER: C. CARLSON	SHEET 32 OF 75
DESIGNED BY: D. PETERSON	BRIDGE RAILING SHEET