

GPS CONTROL POINTS

## HVCTRL #1

STANDARD DISK STAMPED

G 56  
 N = 889998.761  
 E = 1717106.014  
 ELEV. = 685.700

The mark is at the intersection of U.S. 5, VT. 105 and VT 191. The mark is 127 ft east of 5 & 105 center median, 42 ft south of the 191 center median, 8.5 ft east of a supporting leg for a highway sign cross-beam, 7.5 ft west of the west end of a chain link fence. This bench mark has been designated a basic net "A" level line junction mark.

## HVCTRL #2

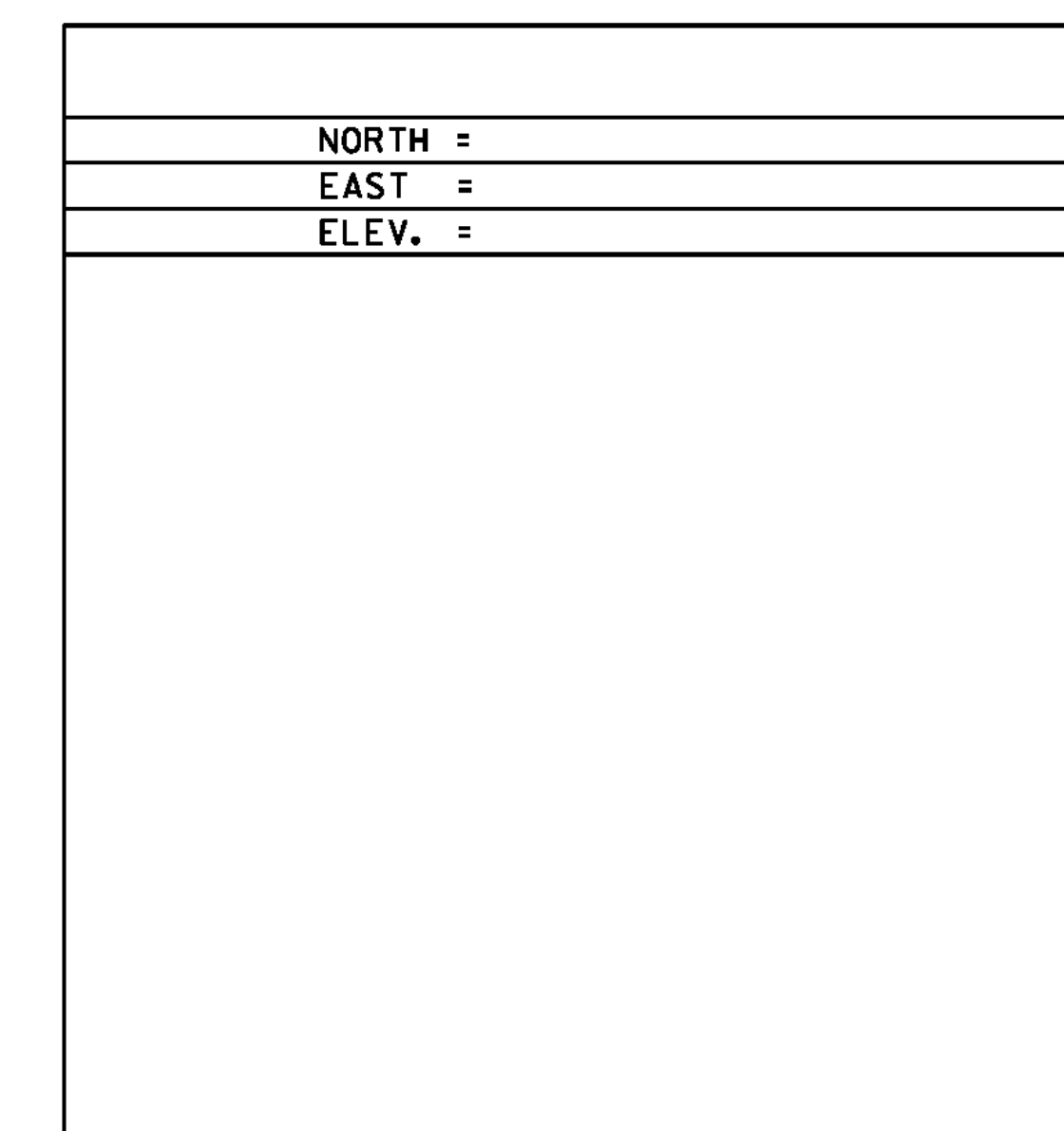
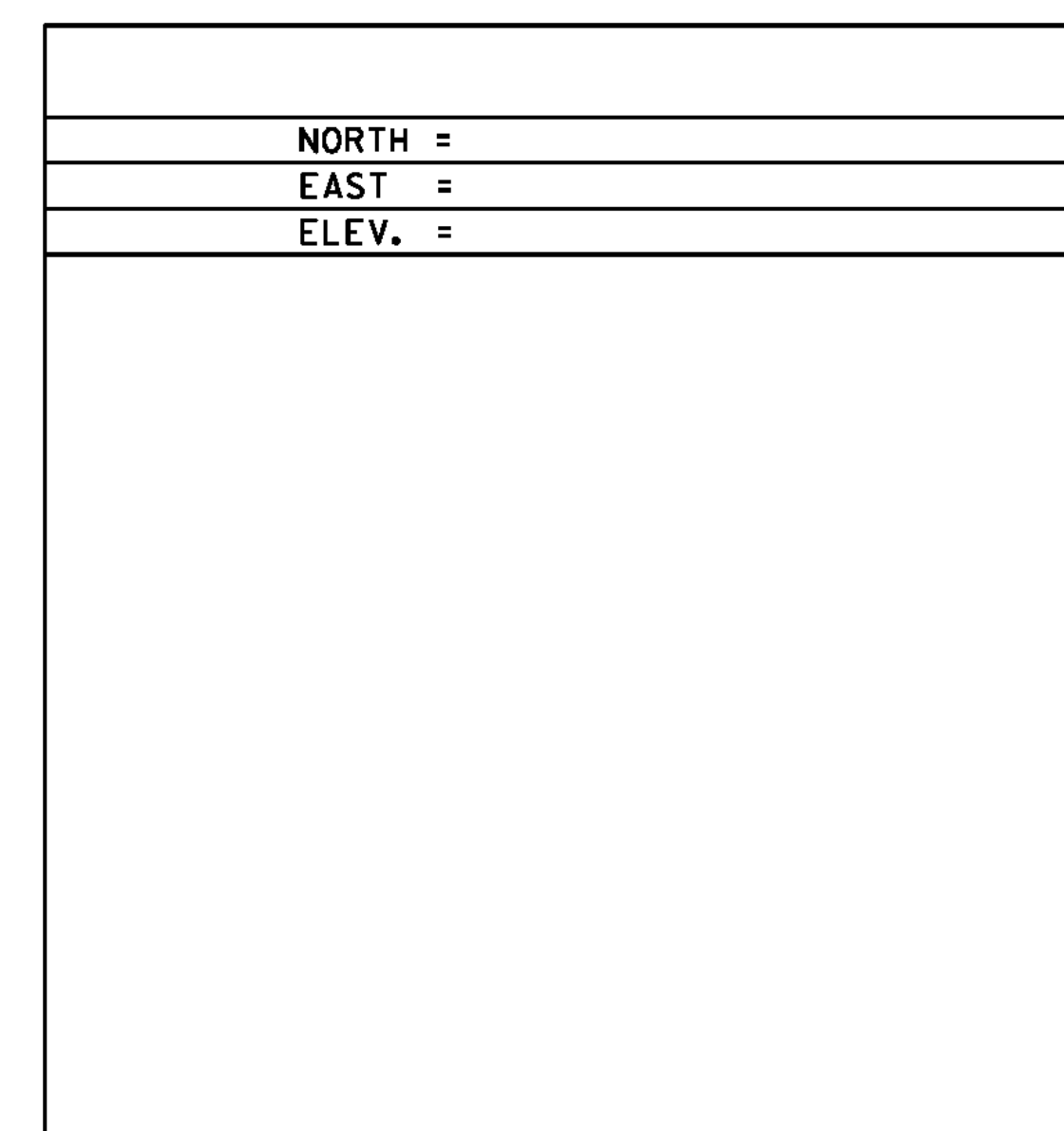
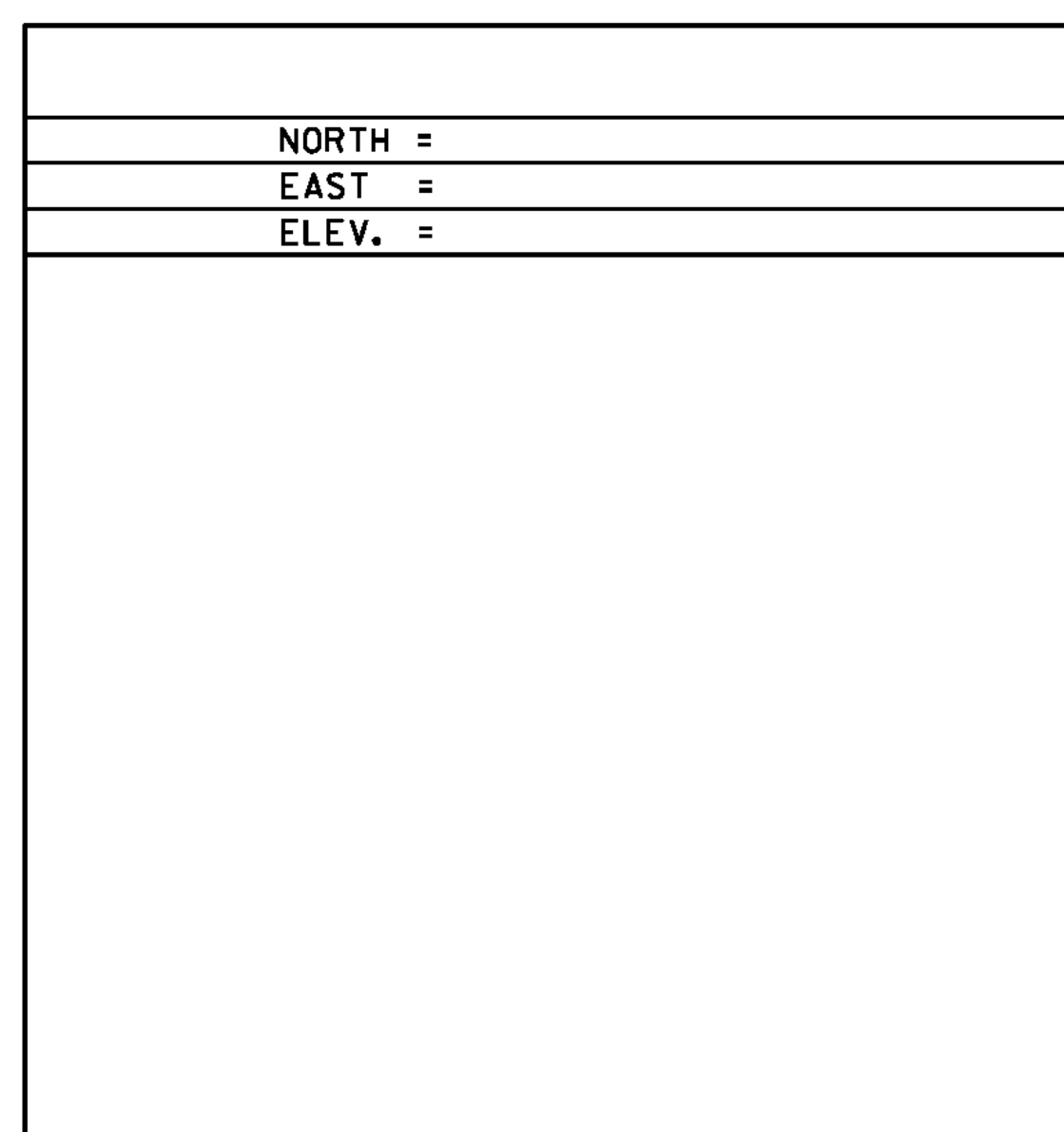
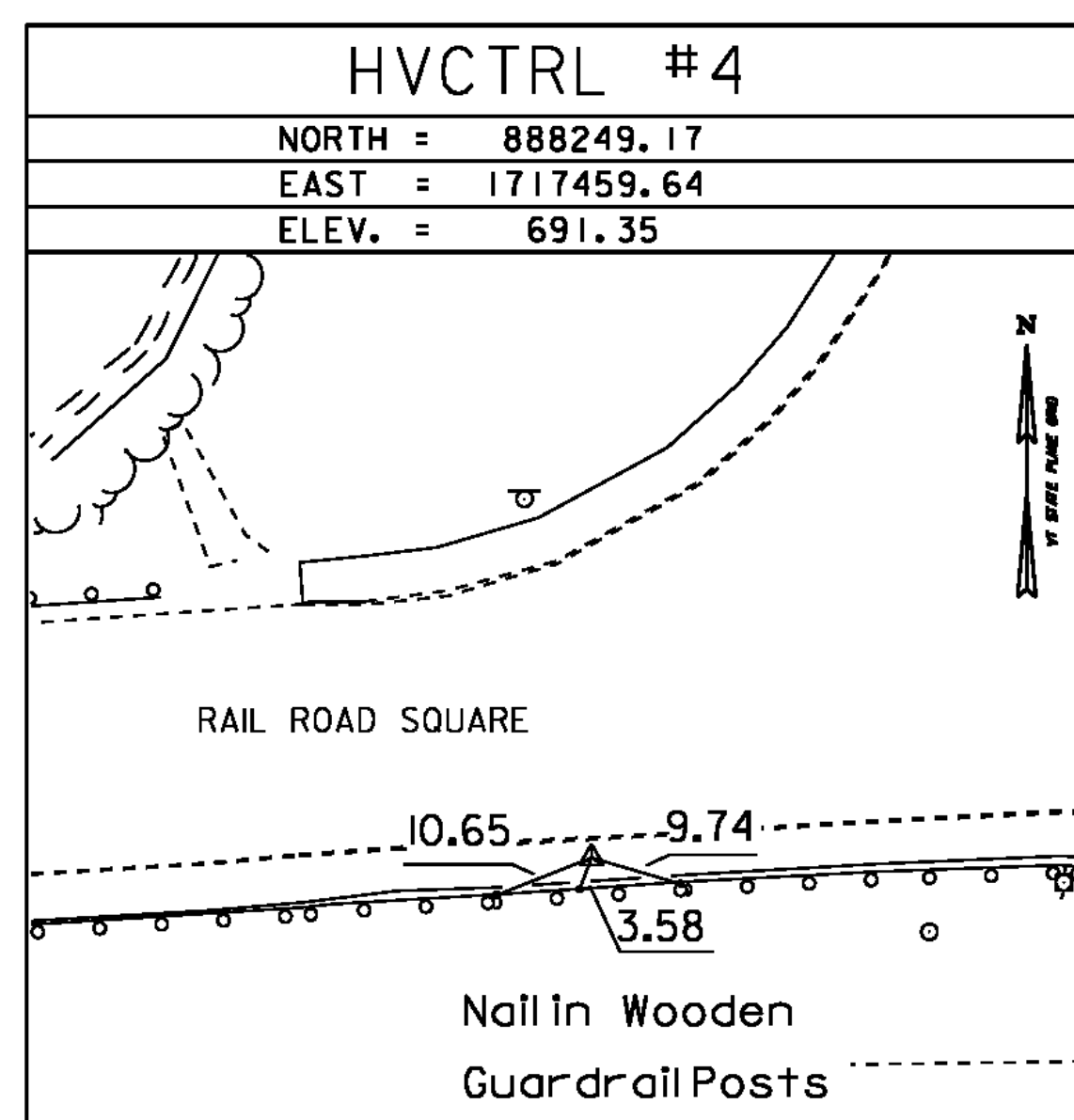
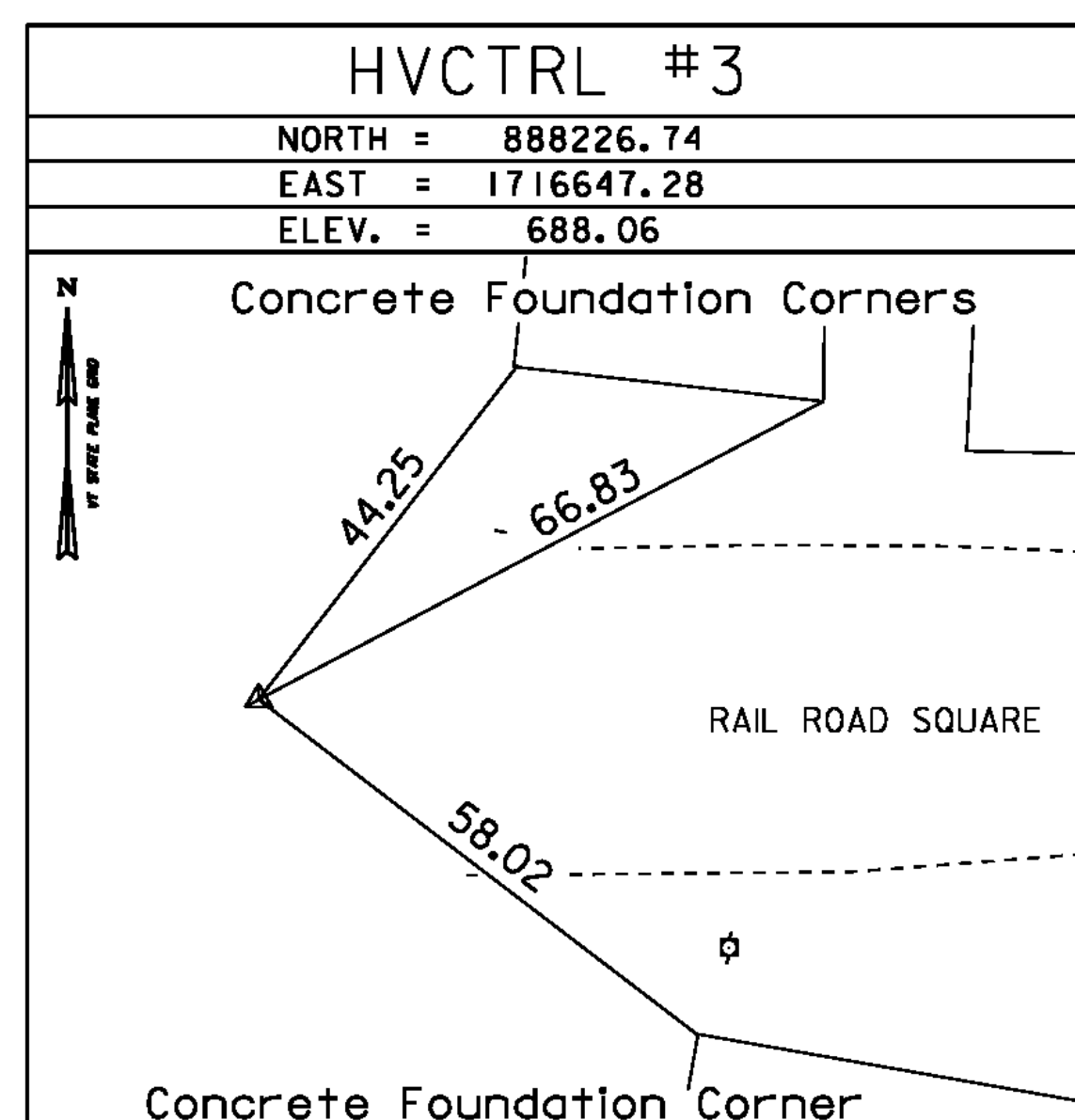
STANDARD DISK STAMPED

Gaging Station RM  
 N = 888714.210  
 E = 1716495.107  
 ELEV. = 687.730

To reach from the intersection of U.S. 5 & VT 105 & VT 191. Go south along US 5 & VT 105 for 0.15 mi to the entrance of a shopping plaza right. Turn right and continue south to the southern end of the parking lot and a gaging station at the edge of Lake Memphremagog. The mark is a USGS gaging station reference mark set flush with the ground, in the top of a 1 ft dia. concrete monument. It is 11.5 ft southwest of & level with the edge of the parking lot. 55.8 ft northwest of the railroad tracks northwest rail, 21 ft northeast of the lake, 36.7 ft south of a 6 in maple, 22.15 ft northwest of the southwest corner of the gaging station and a fiberglass witness post.

• DESCRIPTION PROVIDED BY VERMONT AGENCY OF TRANSPORTATION GEODETIC SURVEY UNIT

TRAVERSE TIES



• MAIN TRAVERSE COMPLETED 12/07/00 by R. Gilman & R. Bullock

ALIGNMENT DATA

DATUM	
VERTICAL	NAVD 88
HORIZONTAL	NAD 83 (96)
ADJUSTMENT	Compass

PROJECT NAME:	Newport City
PROJECT NUMBER:	BRO 1449 (25)
FILE NAME:	96j314\survey\96j314.t.dgn
PROJECT LEADER:	C. CARLSON
DESIGNED BY:	D. PETERSON
TIE SHEET	
PLOT DATE:	22-NOV-2011
DRAWN BY:	R. Bullock
CHECKED BY:	C. CARLSON
SHEET	9 OF 75