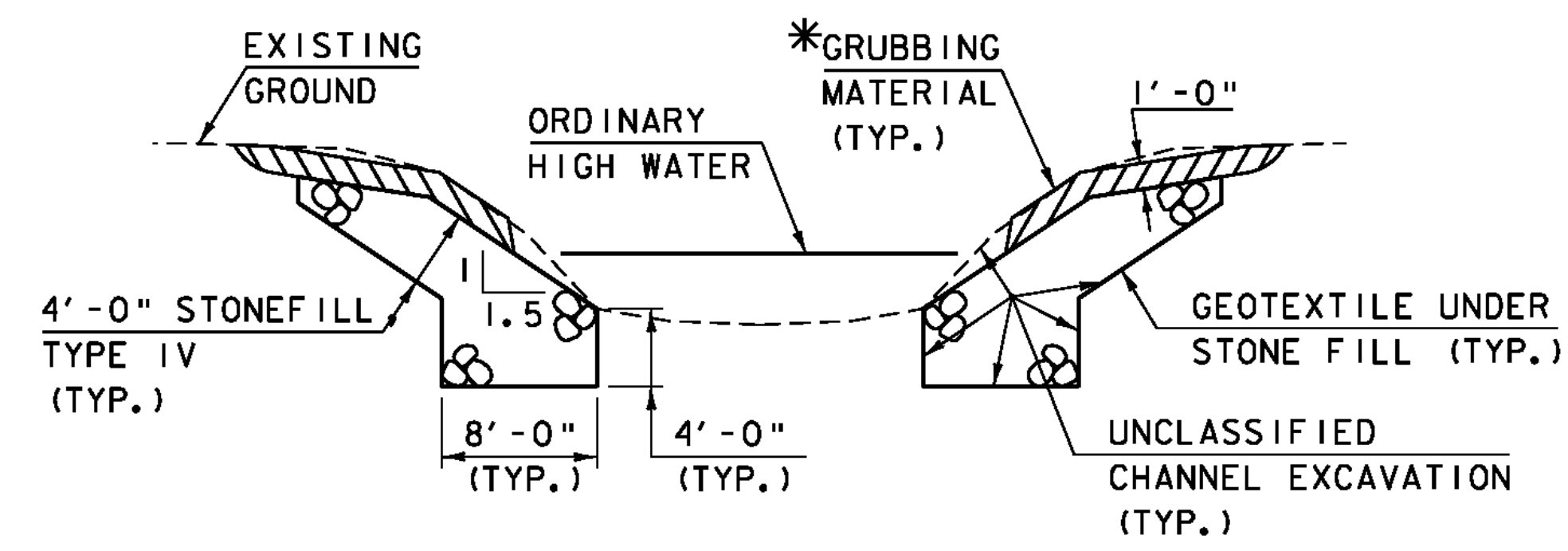
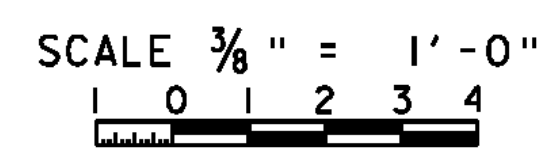


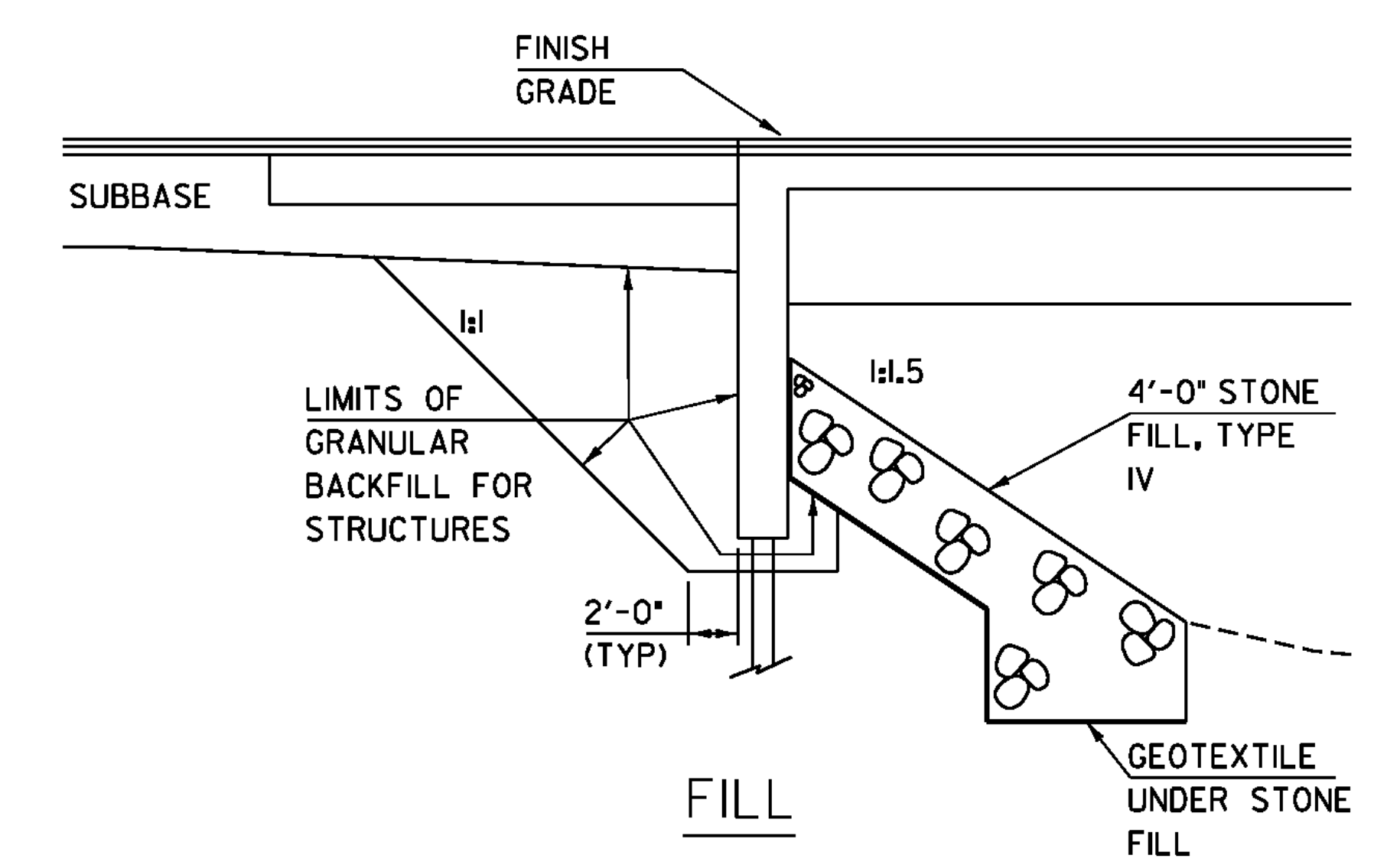
MATERIAL SECTION
 1/2" BCP, TYPE IVS
 1/2" BCP, TYPE IVS
 8/2" SPECIAL PROVISION (HIGH PERFORMANCE CONCRETE, CLASS A LOW CEMENT)
 SHEET MEMBRANE WATERPROOFING, TORCH APPLIED

BCP SHOULD BE READ AS BITUMINOUS CONCRETE PAVEMENT AND SHALL BE PAID FOR UNDER ITEM 900.680 *SPECIAL PROVISION (BITUMINOUS CONCRETE PAVEMENT, SMALL QUANTITY)*.

BRIDGE TYPICAL



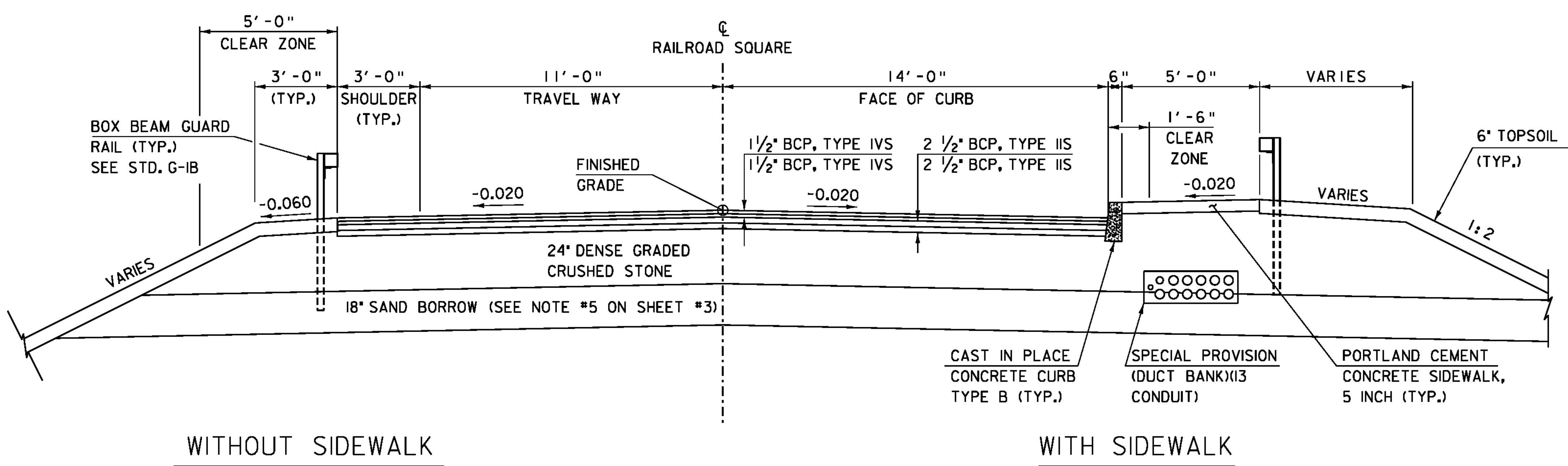
*GRUBBING MATERIAL SHALL NOT BE PLACED ON THE STONE FILL IN THE AREA UNDER THE BRIDGE. WHENEVER CHANNEL SLOPE INTERSECTS ROADWAY SUBBASE, GRUBBING MATERIAL SHALL BEGIN AT THE BOTTOM OF SUBBASE.



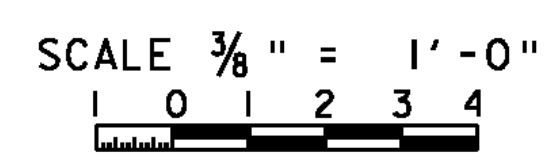
ABUTMENT EARTHWORK LIMITS
 N.T.S.

MATERIAL TOLERANCES
 (IF USED ON PROJECT)

SURFACE	
- PAVEMENT (TOTAL THICKNESS)	+/- 1/4"
- AGGREGATE SURFACE COURSE	+/- 1/2"
SUBBASE	+/- 1"
SAND BORROW	+/- 1"



ROADWAY TYPICAL



TACK COAT:
 EMULSIFIED ASPHALT IS TO BE APPLIED AT THE RATE OF 0.025 GAL/SY
 BETWEEN SUCCESSIVE COURSES OF PAVEMENT AS DIRECTED BY THE ENGINEER.

PROJECT NAME: NEWPORT CITY
 PROJECT NUMBER: BRO 1449(25)
 FILE NAME: 96j314\str\96j314typ.dgn
 PROJECT LEADER: C. CARLSON
 DESIGNED BY: D. PETERSON
 TYPICAL SECTIONS

PLOT DATE: 02-DEC-2011
 DRAWN BY: C. MOONEY
 CHECKED BY: C. CARLSON
 SHEET 8 OF 75