

HD STEEL BEAM GUARDRAIL, GALVANIZED

10+068.9 RT. - 10+082.1 RT.
 10+074.1 LT. - 10+082.0 LT.
 10+102.9 RT. - 10+114.2 RT.
 10+103.0 LT. - 10+116.3 LT.

ANCHOR FOR STEEL BEAM RAIL

10+070.6 RT.
 10+075.7 LT.
 10+112.5 RT.
 10+114.6 LT.

REMOVE EXISTING 1200 PIPE

10+137.8 LT - RT

INSTALL NEW 1500 OPTION PIPE

10+137.8 LT - RT

**SPECIAL PROVISION (BRIDGE RAILING,
 GALVANIZED HDSB/CURB MOUNTED/STEEL TUBING)**

10+082.1 RT. - 10+102.9 RT.
 10+082.0 LT. - 10+103.0 LT.

REMOVING SIGNS

10+137.2 LT. (2)

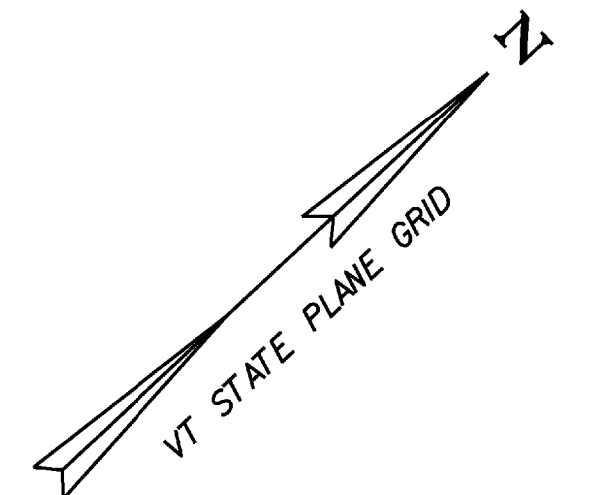
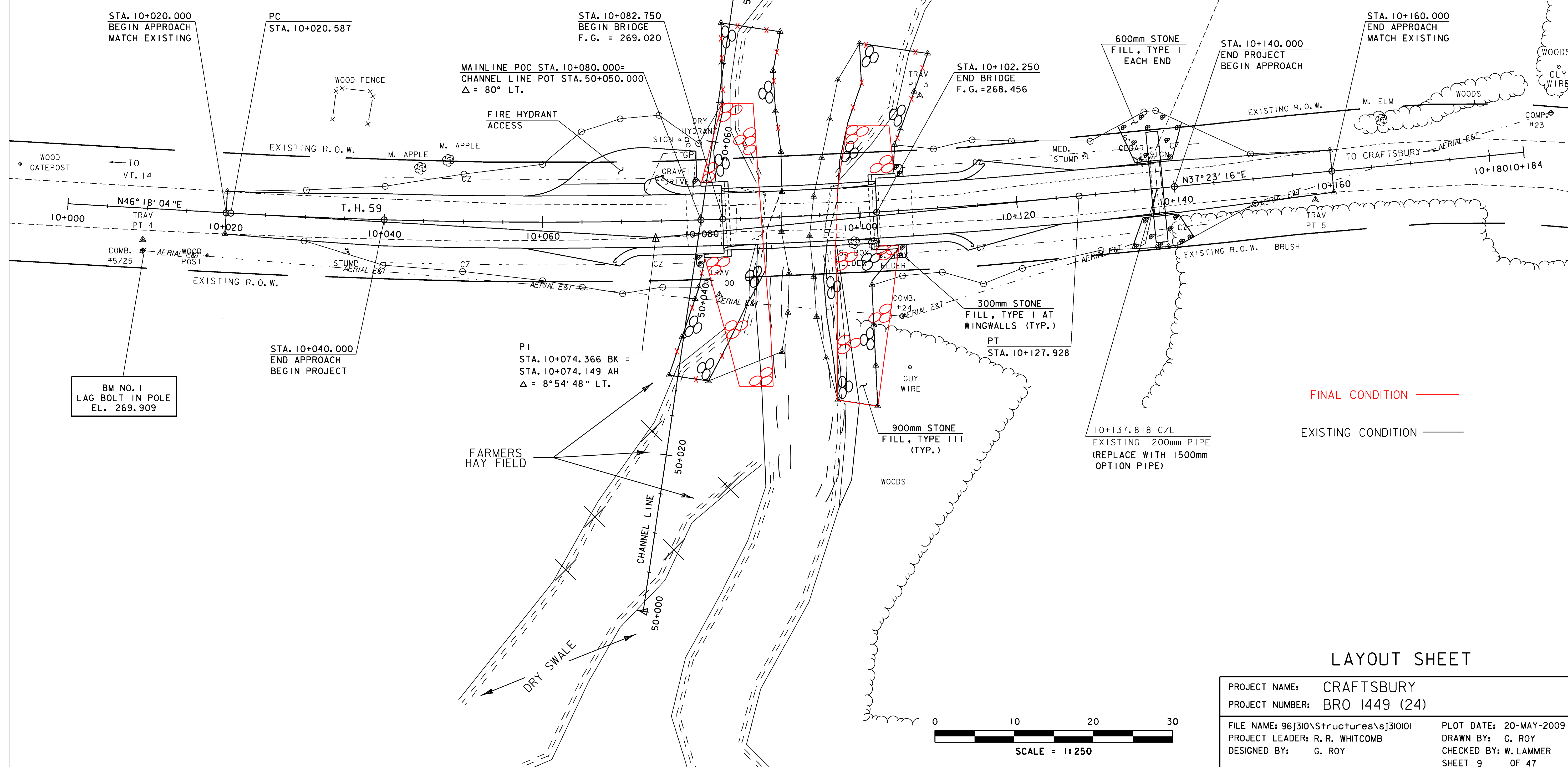
CONSTRUCT GRAVEL DRIVE

W/1.5m PAVED APRON

10+067.6 LT.

CURVE DATA

$\Delta = 8^{\circ}54'48''$
 $R = 690.000$
 $T = 53.779$
 $L = 107.341$
 $E = 2.093$
 $2T-L = 0.217$
 $BANKING = 0.020$



FINAL CONDITION ———
 EXISTING CONDITION ———

LAYOUT SHEET

PROJECT NAME:	CRAFTSBURY	FILE NAME:	96J310\Structures\sj310I01	PLOT DATE:	20-MAY-2009
PROJECT NUMBER:	BRO 1449 (24)	PROJECT LEADER:	R. R. WHITCOMB	DRAWN BY:	G. ROY
		DESIGNED BY:	G. ROY	CHECKED BY:	W. LAMMER
				SHEET	9 OF 47

