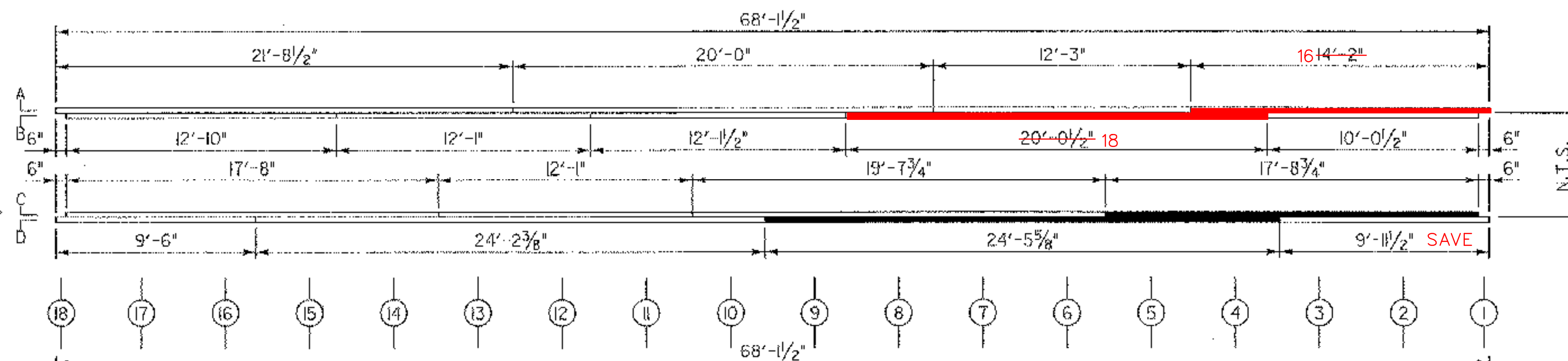
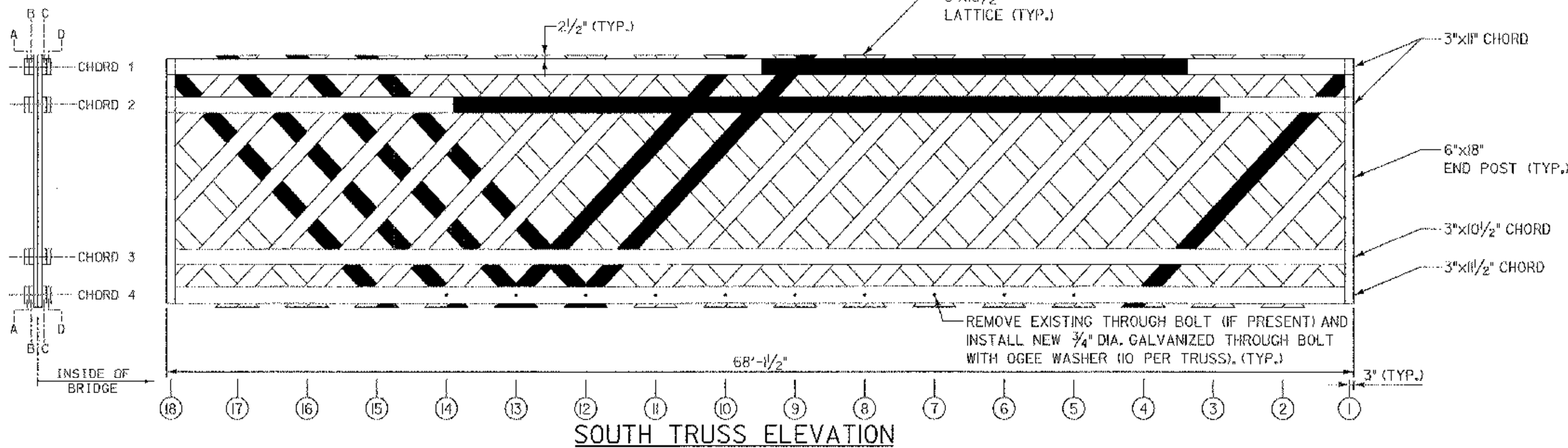
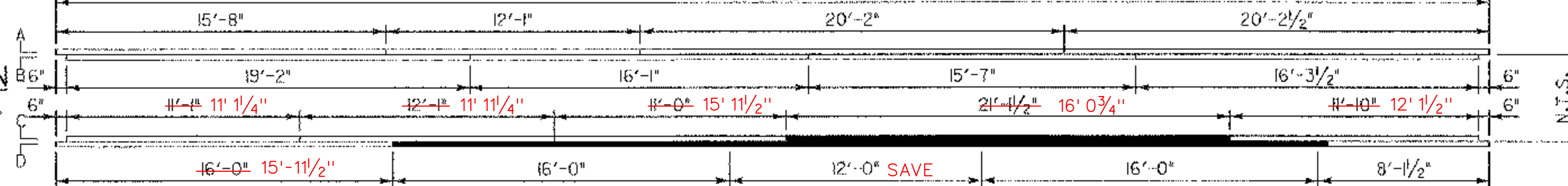


CHORD 1 PLAN
SCALE: 1/4" = 1'-0" HORIZ.

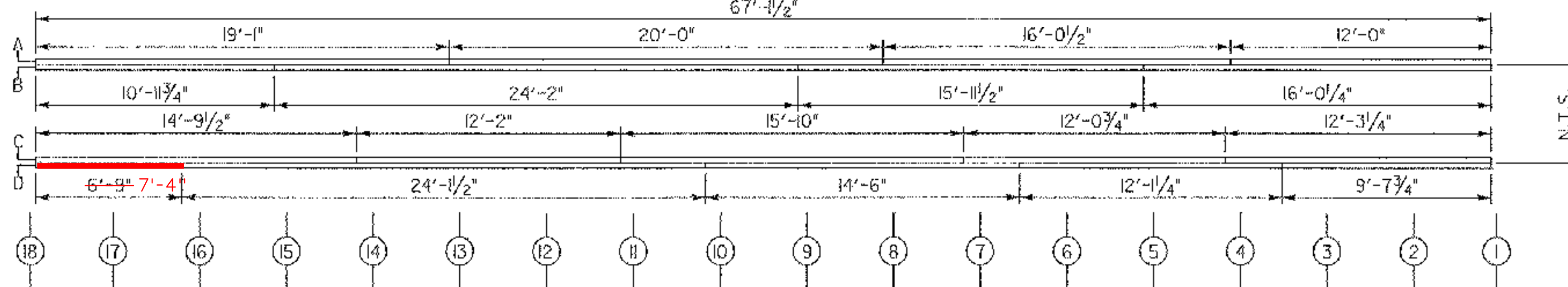


CHORD 2 PLAN
SCALE: 1/4" = 1'-0" HORIZ.

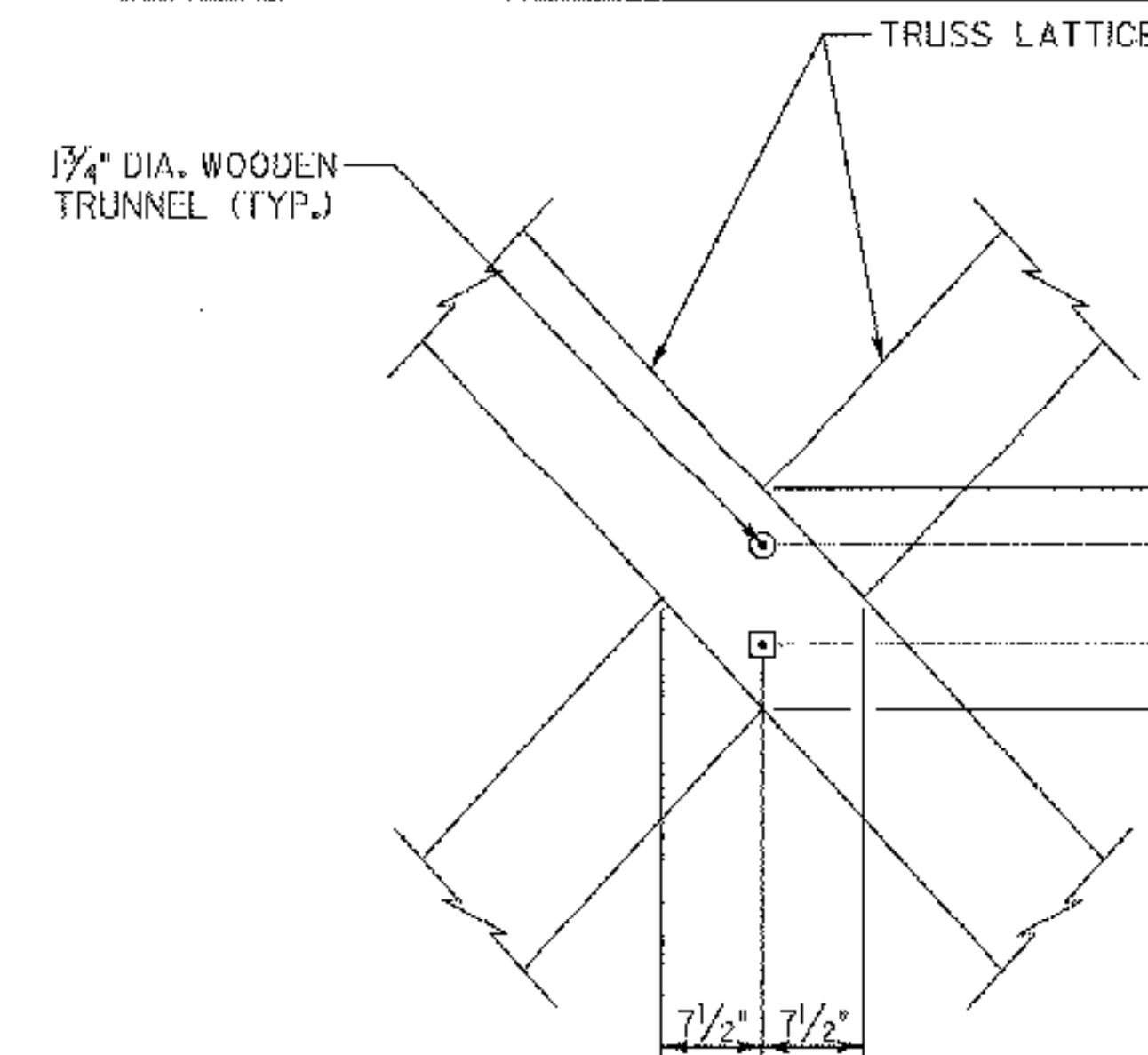
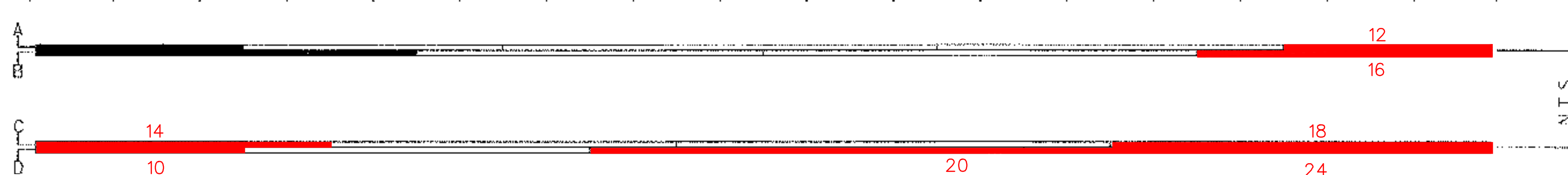


SOUTH TRUSS ELEVATION
(LOOKING SOUTH)
SCALE: 1/4" = 1'-0"

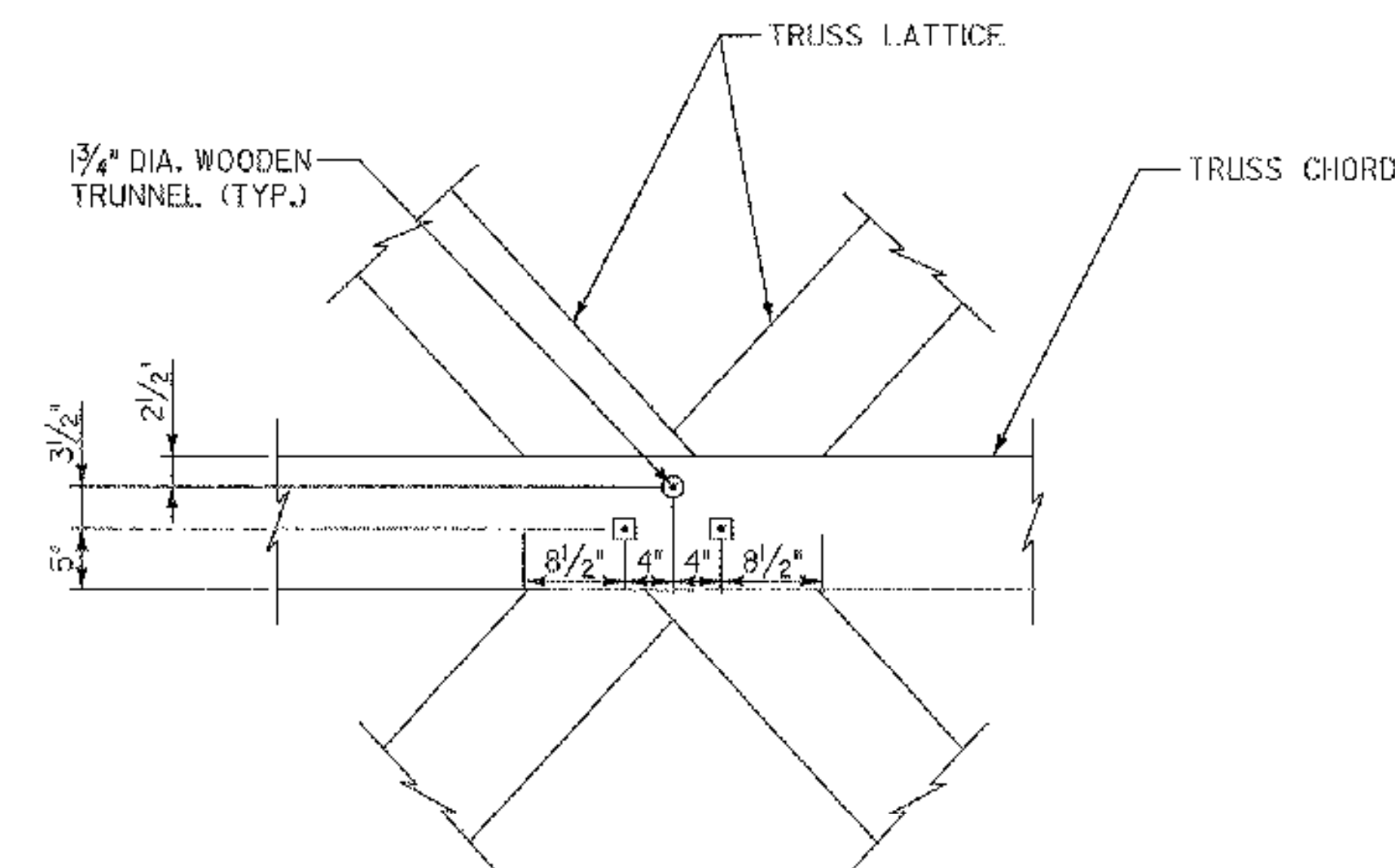
CHORD 3 PLAN
SCALE: 1/4" = 1'-0" HORIZ.



CHORD 4 PLAN
SCALE: 1/4" = 1'-0" HORIZ.



LATTICE TO LATTICE CONNECTION
SCALE: 1" = 1'-0"



LATTICE TO CHORD CONNECTION
SCALE: 1" = 1'-0"

NOTE: CHORD 3 AND 4 SHOWN, CHORD 1 AND 2 MIRROR IMAGES OF CHORD 3 AND 4. THROUGH BOLTS IN CHORD 4 NOT SHOWN FOR CLARITY.

PLAN NOTES:

1. SEE SHEET 7 FOR NOTES THAT APPLY TO THIS SHEET.

LEGEND

- TRUSS NODE
- MEMBER TO BE REPLACED
- N.T.S. NOT TO SCALE
- WOODEN TRUNNEL HEAD
- END OF TRUNNEL

STATE OF VERMONT AGENCY OF TRANSPORTATION

Town Of MONTGOMERY	Bridge No. 41
Highway No. 42	Log Sta. —
COMSTOCK COVERED BRIDGE	
SOUTH TRUSS ELEVATION & CHORD PLAN	
Designed By J.W. ROCKWELL	Drawn By J.D. GEER
Checked By ST. JAMES	Date 1/2003
PROJECT MONTGOMERY	PROJECT NO. BHO 1448(26)
L.G.C. Info. —	ZJ30ATRS2
Bridge Sheet No. 8	Sheet 8 of 18

