



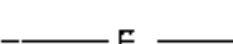




PLAN NOTES:

1. INSTALL TEMPORARY TRAFFIC BARRIERS AT EACH APPROACH TO THE BRIDGE AS DIRECTED BY THE RESIDENT ENGINEER.
2. ALL SIGNS DETAILED ON THIS SHEET ARE PROPOSED. A LOAD LIMIT SIGN SHALL BE ADDED AT THE ENDS OF COMSTOCK BRIDGE ROAD AND SYLVESTER ROAD AS DIRECTED BY THE ENGINEER.
3. SIGN LOCATIONS SHOWN ARE APPROXIMATE. FINAL LOCATION WILL BE DETERMINED BY THE RESIDENT ENGINEER IN THE FIELD.
4. INSTALL TEMPORARY TRAFFIC BARRICADES AT BOTH BRIDGE APPROACHES.
5. SEE SHEETS 15 - 17 FOR STEEL BACKED TIMBER GUARDRAIL DETAILS.
6. ALL WORK SHALL BE COMPLETED WITHIN THE R.O.W. AS SHOWN.
7. REMOVE AND DISPOSE OF ALL EXISTING WOOD APPROACH RAIL AND POSTS (4 LOCATIONS).

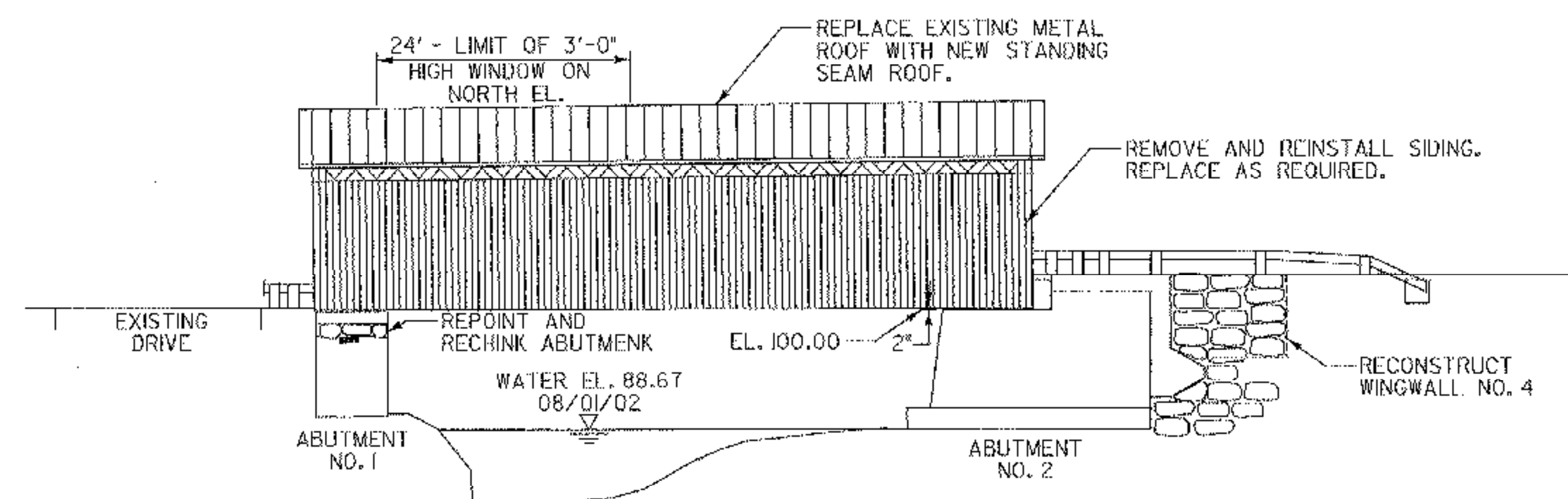
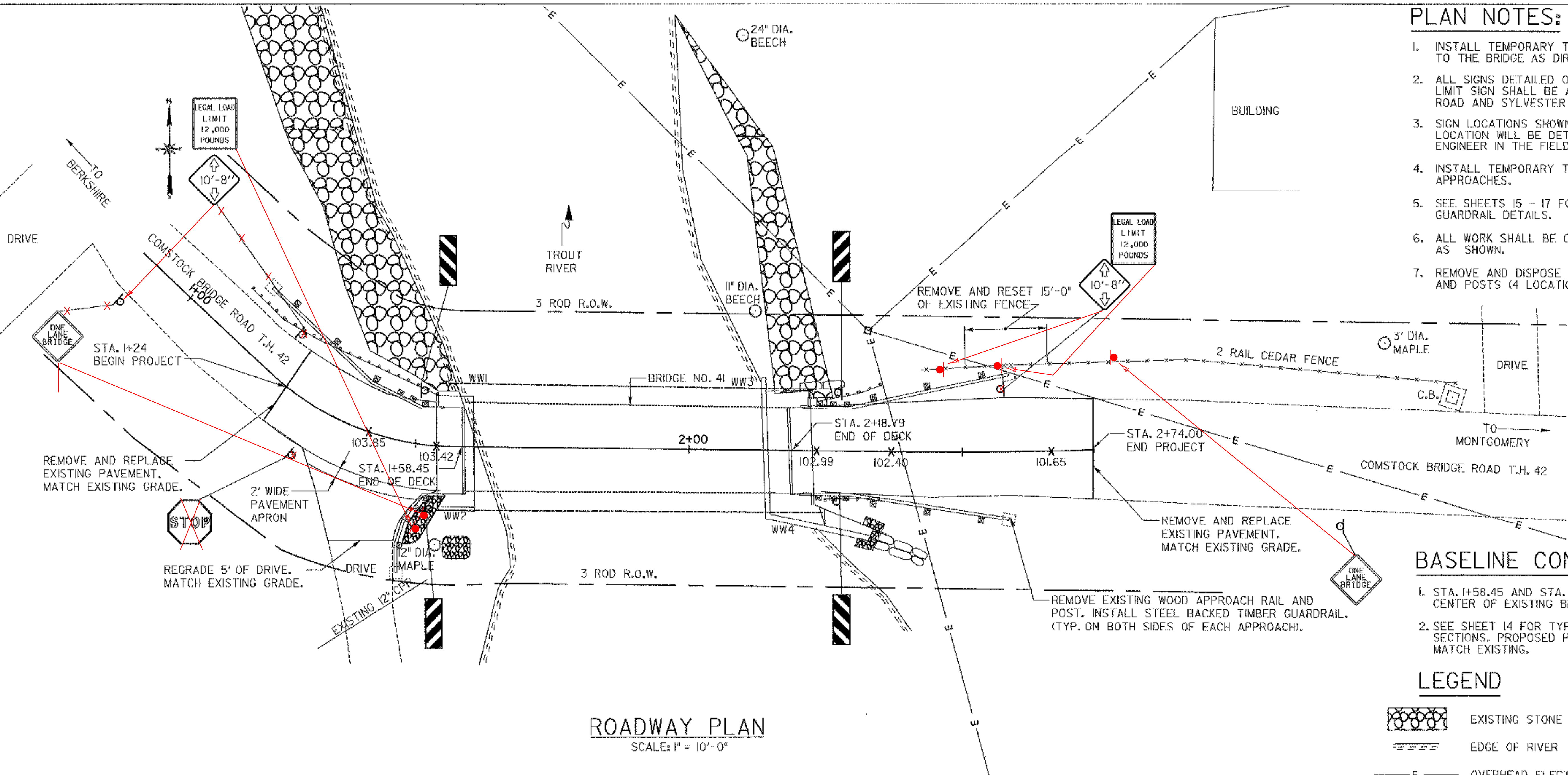
BASELINE CONTROL:

1. STA. 1+58.45 AND STA. 2+8.79, POINT LOCATED AT CENTER OF EXISTING BRIDGE AT THE END OF DECK.
2. SEE SHEET 14 FOR TYPICAL APPROACH AND DRIVE SECTIONS. PROPOSED PAVEMENT ELEVATIONS TO MATCH EXISTING.

LEGEND

-  EXISTING STONE FILL
-  EDGE OF RIVER
-  OVERHEAD ELECTRIC
-  EXISTING RAIL
-  PROPOSED RAIL
-  PROPOSED SPOT ELEVATIONS
-  EXISTING LEDGE

ROADWAY PLAN
SCALE: 1" = 10'-0"



ELEVATION
(SOUTH ELEVATION)
SCALE: 1" = 10'-0"

STATE OF VERMONT AGENCY OF TRANSPORTATION			
Town Of	MONTGOMERY	Bridge No.	41
Highway No.	42	Log. Sta.	---
		Surv. Sta.	---
COMSTOCK COVERED BRIDGE			
ROADWAY PLAN & ELEVATION			
Designed By	J.W. ROCKWELL	Drawn By	J.D. GEER
Checked By	ST. JAMES	Date	1-2003
PROJECT	MONTGOMERY	Bridge Design Supervisor	Date
L.G.C. Info.	---	PROJECT NO.	BHO 1448(26)
Bridge Sheet No.	4	Sheet	4 of 18

HIA
consulting engineers
150 Dow Street - Manchester, NH 03101-1227
Tel: 603-569-5505 Fax: 603-569-4888
104 South Winooski Ave. - Burlington, VT 05401
Tel: 802-650-1331 Fax: 802-669-6499
Web Page: www.hiaengineers.com E-Mail: hia@hia.com