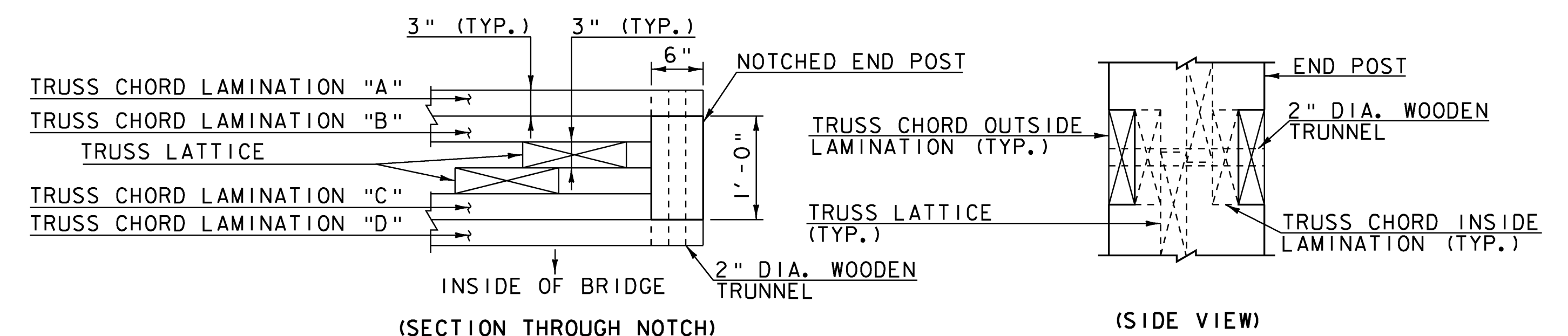
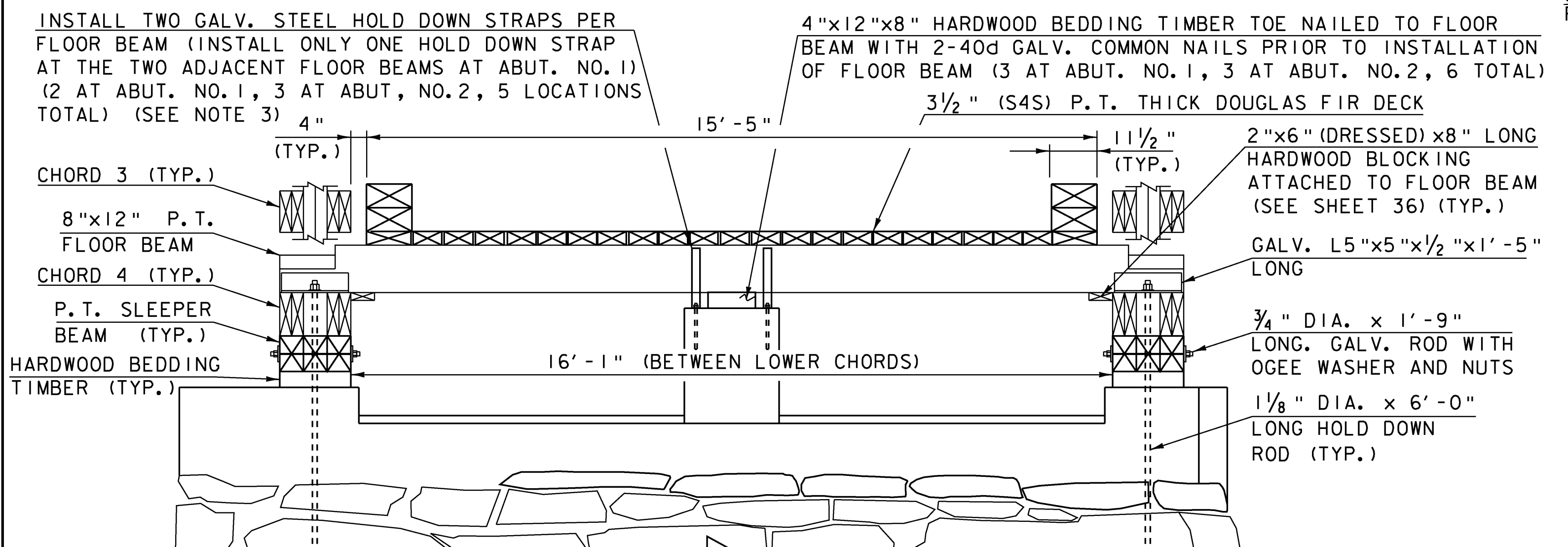


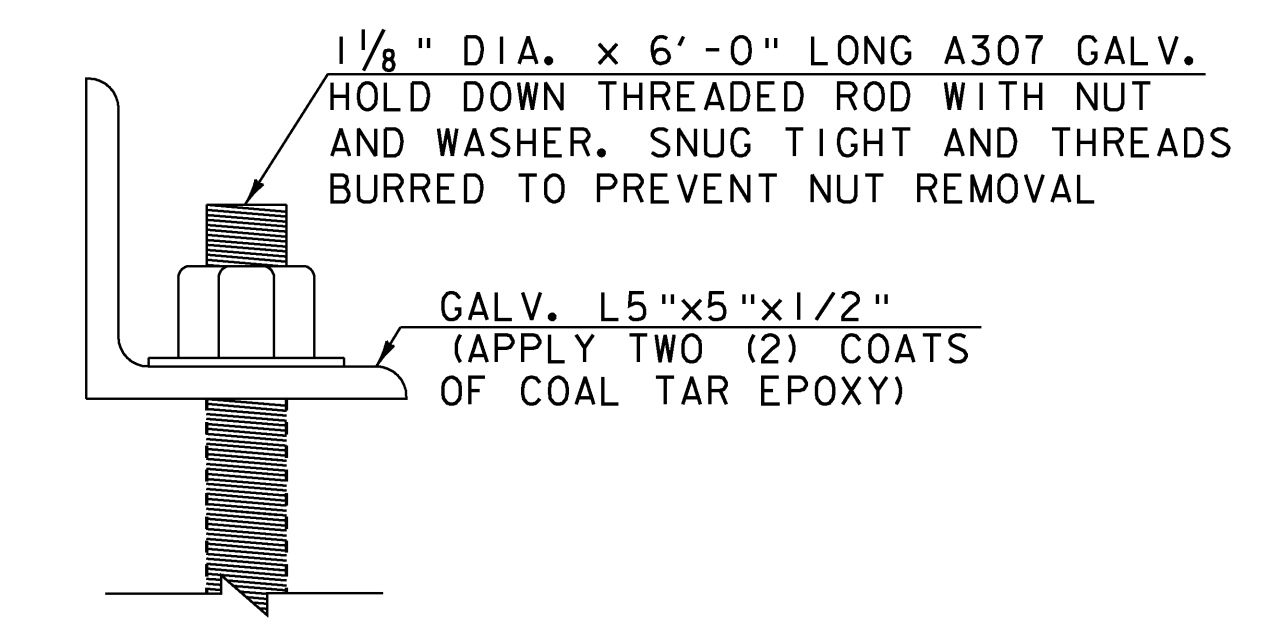
ABUTMENT NO. 1 BEARING DETAIL
SCALE: 1" = 1'-0"



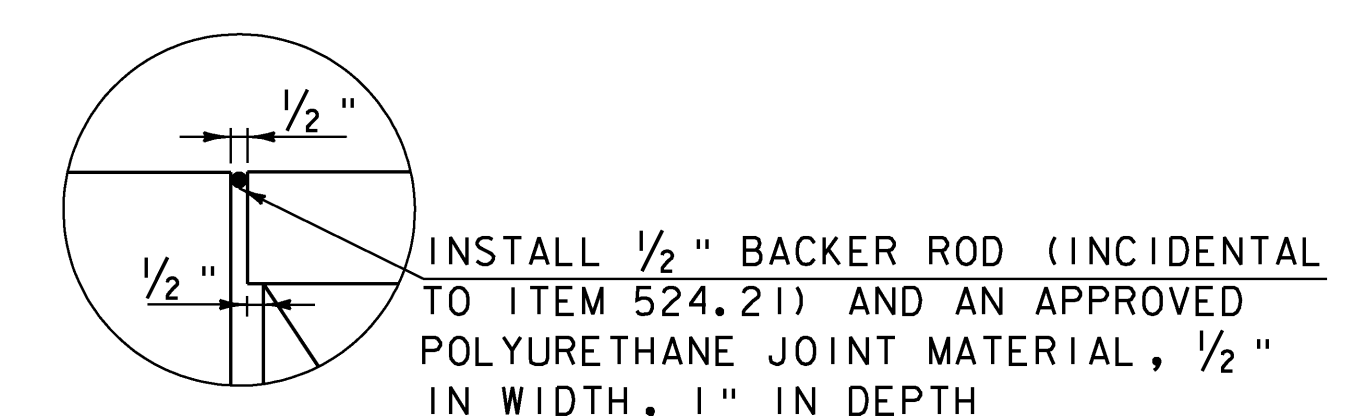
TYPICAL TRUSS CHORD TO END POST DETAIL
SCALE: 1" = 1'-0"



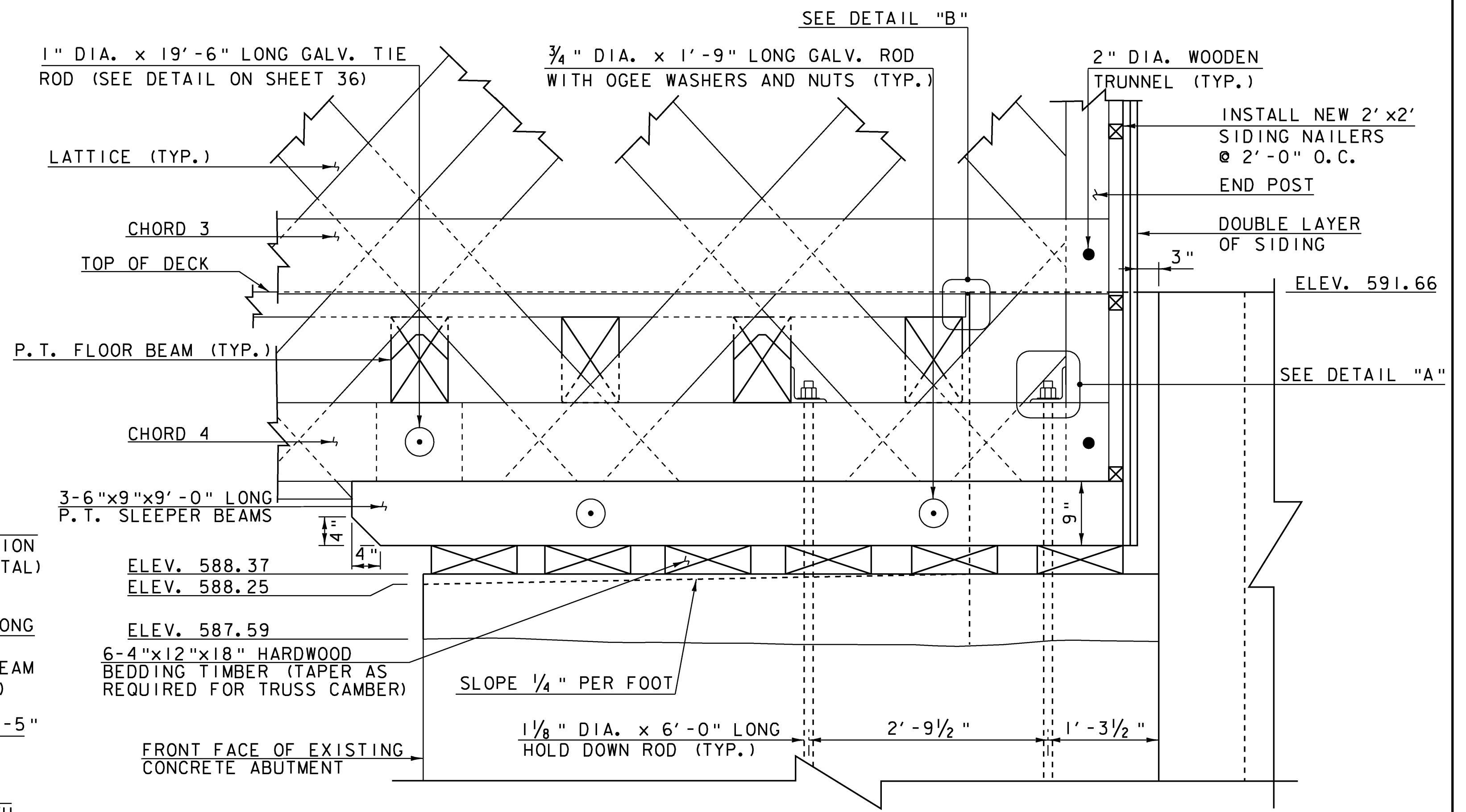
ABUTMENT NO. 1 BEARING TYPICAL SECTION
SCALE: 1/2" = 1'-0"



DETAIL "A"
NOT TO SCALE



DETAIL "B"
SCALE: 2" = 1'-0"



ABUTMENT NO. 2 BEARING DETAIL
SCALE: 1" = 1'-0"

SHEET NOTES:

1. THE HOLD DOWN RODS SHALL BE GROUTED INTO THE ABUTMENTS USING SPEC BOND 200 BY CONSPEC, RESCON 304 BY SYMONS CORPORATION OR DURALCRETE BY TAMMS INDUSTRIES OR OTHER EQUIVALENT APPROVED EPOXY MORTAR IN LIEU OF MORTAR, TYPE IV.
2. THE HOLD DOWN RODS, DRILLING AND GROUTING OF THEM, NUTS, WASHERS, L5x5x1/2 ANGLES, REMOVAL AND REINSTALLATION OF END LATTICE TO ALLOW INSTALLATION OF HOLD DOWN RODS SHALL BE PAID UNDER ITEM 900.620, SPECIAL PROVISION (BEARING DEVICE ASSEMBLY, COVERED BRIDGE) COMPLETE IN PLACE.
3. HOLD DOWN STRAPS SHALL BE GALVANIZED WITH A MINIMUM UPLIFT CAPACITY OF 1,000 LBS PER FLOOR BEAM. ACCEPTABLE MANUFACTURERS ARE SIMPSON STRONG-TIE OR TECO OR APPROVED EQUAL (PAID UNDER ITEM 506.75, STRUCTURAL STEEL).

SCALE: 1/2" = 1'-0"

SCALE: 1" = 1'-0"



Hoyle, Tanner & Associates, Inc.

MODEL	Default
HTA PROJECT NO.	904214

PROJECT NAME: MONTGOMERY
PROJECT NUMBER: BHO 148(23)

FILE NAME: Z96J302sup2.dgn
PROJECT LEADER: J.H.WEAVER
DESIGNED BY: J.BICJA
COVERED BRIDGE BEARING DETAILS

PLOT DATE: 8/1/2008
DRAWN BY: J.B.McQUAID
CHECKED BY: S.T.JAMES
SHEET 35 OF 54