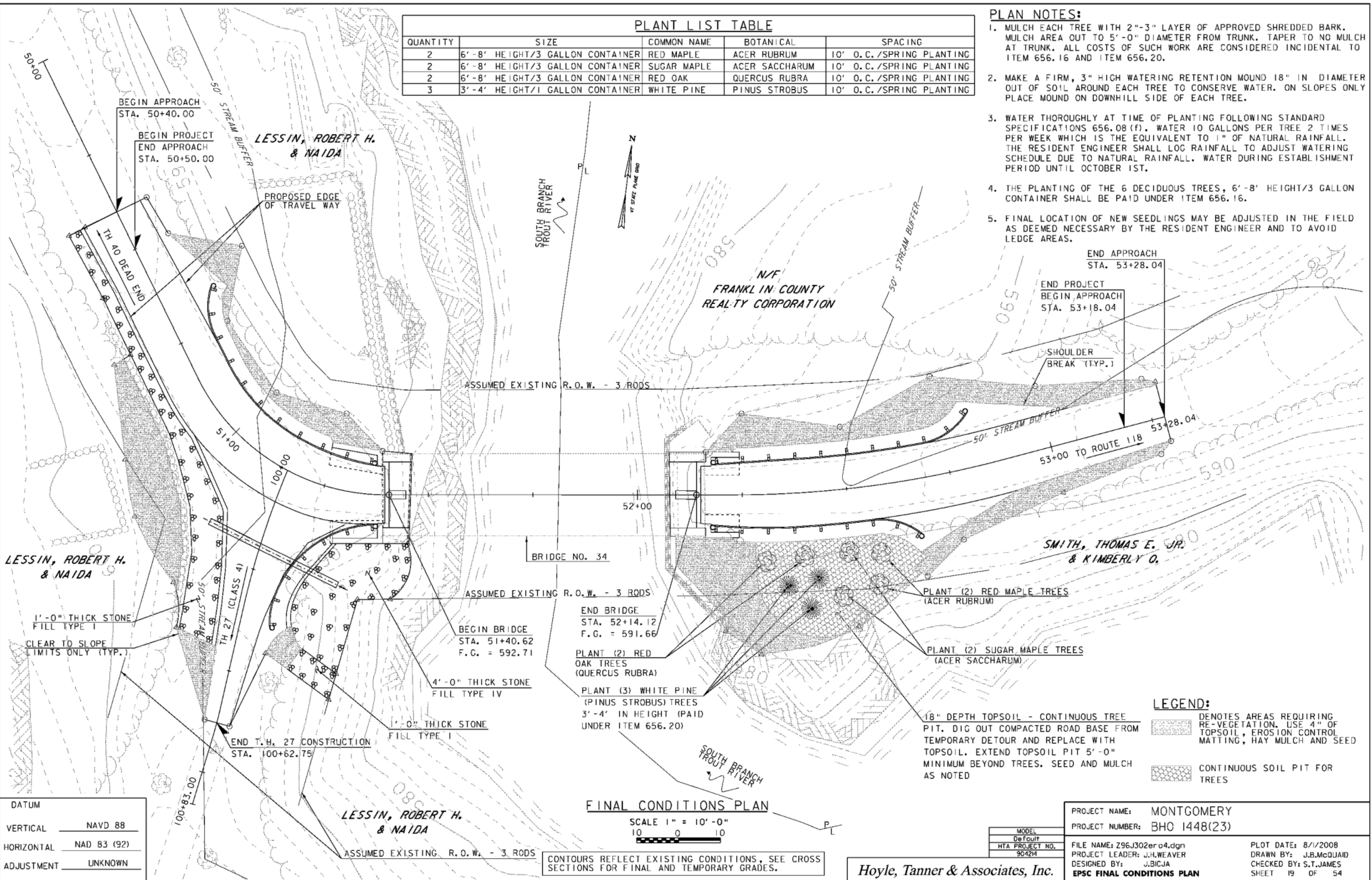


PLANT LIST TABLE					
QUANTITY	SIZE	COMMON NAME	BOTANICAL	SPACING	
2	6'-8' HEIGHT/3 GALLON CONTAINER	RED MAPLE	ACER RUBRUM	10' O.C. /SPRING PLANTING	
2	6'-8' HEIGHT/3 GALLON CONTAINER	SUGAR MAPLE	ACER SACCHARUM	10' O.C. /SPRING PLANTING	
2	6'-8' HEIGHT/3 GALLON CONTAINER	RED OAK	QUERCUS RUBRA	10' O.C. /SPRING PLANTING	
3	3'-4' HEIGHT/1 GALLON CONTAINER	WHITE PINE	PINUS STROBUS	10' O.C. /SPRING PLANTING	

**PLAN NOTES:**

- MULCH EACH TREE WITH 2"-3" LAYER OF APPROVED SHREDDED BARK. MULCH AREA OUT TO 5'-0" DIAMETER FROM TRUNK. TAPER TO NO MULCH AT TRUNK. ALL COSTS OF SUCH WORK ARE CONSIDERED INCIDENTAL TO ITEM 656.16 AND ITEM 656.20.
- MAKE A FIRM, 3" HIGH WATERING RETENTION MOUND 18" IN DIAMETER OUT OF SOIL AROUND EACH TREE TO CONSERVE WATER. ON SLOPES ONLY PLANT MOUND ON DOWNHILL SIDE OF EACH TREE.
- WATER THOROUGHLY AT TIME OF PLANTING FOLLOWING STANDARD SPECIFICATIONS 656.08 (F). WATER 10 GALLONS PER TREE 2 TIMES PER WEEK WHICH IS THE EQUIVALENT TO 1" OF NATURAL RAINFALL. THE RESIDENT ENGINEER SHALL LOG RAINFALL TO ADJUST WATERING SCHEDULE DUE TO NATURAL RAINFALL. WATER DURING ESTABLISHMENT PERIOD UNTIL OCTOBER 1ST.
- THE PLANTING OF THE 6 DECIDUOUS TREES, 6'-8' HEIGHT/3 GALLON CONTAINER SHALL BE PAID UNDER ITEM 656.16.
- FINAL LOCATION OF NEW SEEDLINGS MAY BE ADJUSTED IN THE FIELD AS DEEMED NECESSARY BY THE RESIDENT ENGINEER AND TO AVOID LEDGE AREAS.



DATUM	
VERTICAL	NAVD 88
HORIZONTAL	NAD 83 (92)
ADJUSTMENT	UNKNOWN

**FINAL CONDITIONS PLAN**  
 SCALE 1" = 10'-0"  
 10 0 10  
 CONTOURS REFLECT EXISTING CONDITIONS, SEE CROSS SECTIONS FOR FINAL AND TEMPORARY GRADES.

MODEL	
Default	
HTA PROJECT NO.	90424

PROJECT NAME:	MONTGOMERY	PLOT DATE:	8/1/2008
PROJECT NUMBER:	BHO 1448(23)	DRAWN BY:	J.B.McQUAID
FILE NAME:	Z96J302er04.dgn	DESIGNED BY:	J.BICJA
PROJECT LEADER:	J.H.WEAVER	CHECKED BY:	S.T.JAMES
EPSC FINAL CONDITIONS PLAN		SHEET	19 OF 54

Hoyle, Tanner & Associates, Inc.

**LEGEND:**

	DENOTES AREAS REQUIRING RE-VEGETATION. USE 4" OF TOPSOIL, EROSION CONTROL MATTING, HAY MULCH AND SEED
	CONTINUOUS SOIL PIT FOR TREES