

DRAINAGE NOTES
 RE-LAY 34 LF x 18" DIA. DRAINAGE PIPE FROM DRAINAGE NOTE (1) ON SHEET 11
 STA. 51+07.82, RT 20.29' TO STA. 51+31.83, RT 22.54'
 INLET INVERT ELEV. = 591.00
 OUTLET INVERT ELEV. = 588.00

CURVE NO. 1 'TH 27' (CLASS 3) DATA
 $\Delta = 63^\circ 56' 48''$ LT
 $D = 114^\circ 35' 30''$
 $R = 50.00$ FT
 $T = 31.21$ FT
 $L = 55.80$ FT
 $E = 8.94$ FT
 BANK = NORMAL

CURVE NO. 2 'TH 27' (CLASS 3) DATA
 $\Delta = 14^\circ 52' 22''$ LT
 $D = 22^\circ 55' 06''$
 $R = 250.00$ FT
 $T = 32.63$ FT
 $L = 64.89$ FT
 $E = 2.12$ FT
 BANK = NORMAL

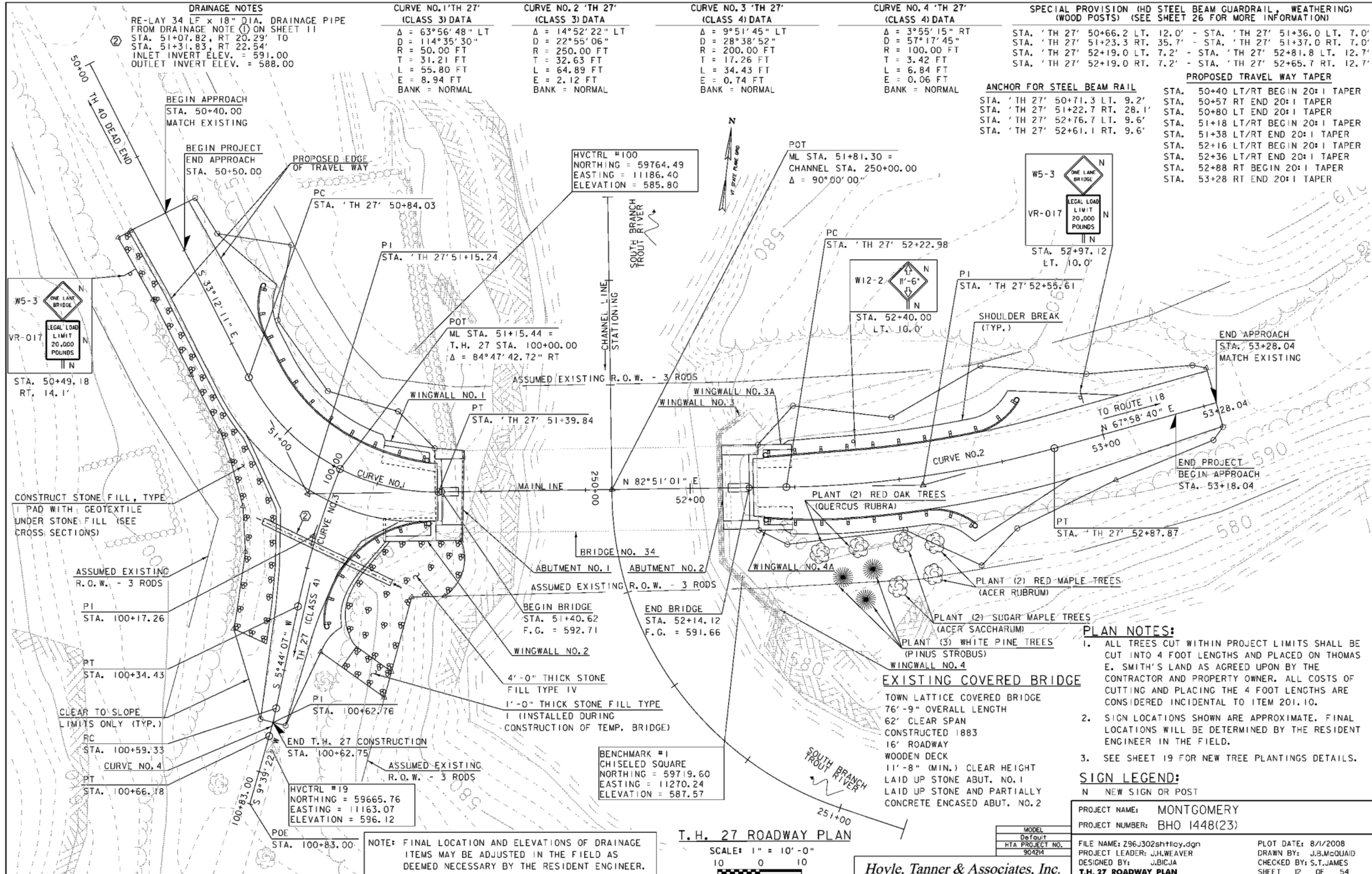
CURVE NO. 3 'TH 27' (CLASS 4) DATA
 $\Delta = 9^\circ 51' 45''$ LT
 $D = 28^\circ 38' 52''$
 $R = 200.00$ FT
 $T = 17.26$ FT
 $L = 34.43$ FT
 $E = 0.74$ FT
 BANK = NORMAL

CURVE NO. 4 'TH 27' (CLASS 4) DATA
 $\Delta = 3^\circ 55' 15''$ RT
 $D = 57^\circ 17' 45''$
 $R = 100.00$ FT
 $T = 3.42$ FT
 $L = 6.84$ FT
 $E = 0.06$ FT
 BANK = NORMAL

SPECIAL PROVISION (HD STEEL BEAM GUARDRAIL, WEATHERING) (WOOD POSTS) (SEE SHEET 26 FOR MORE INFORMATION)
 STA. 'TH 27' 50+66.2 LT. 12.0' - STA. 'TH 27' 51+36.0 LT. 7.0'
 STA. 'TH 27' 51+23.3 RT. 35.7' - STA. 'TH 27' 51+37.0 RT. 7.0'
 STA. 'TH 27' 52+19.0 LT. 7.2' - STA. 'TH 27' 52+81.8 LT. 12.7'
 STA. 'TH 27' 52+19.0 RT. 7.2' - STA. 'TH 27' 52+65.7 RT. 12.7'

ANCHOR FOR STEEL BEAM RAIL
 STA. 'TH 27' 50+71.3 LT. 9.2'
 STA. 'TH 27' 51+22.7 RT. 28.1'
 STA. 'TH 27' 52+76.7 LT. 9.6'
 STA. 'TH 27' 52+61.1 RT. 9.6'

PROPOSED TRAVEL WAY TAPER
 STA. 50+40 LT/RT BEGIN 20:1 TAPER
 STA. 50+57 RT END 20:1 TAPER
 STA. 50+80 LT END 20:1 TAPER
 STA. 51+18 LT/RT BEGIN 20:1 TAPER
 STA. 51+38 LT/RT END 20:1 TAPER
 STA. 52+16 LT/RT BEGIN 20:1 TAPER
 STA. 52+36 LT/RT END 20:1 TAPER
 STA. 52+88 RT BEGIN 20:1 TAPER
 STA. 53+28 RT END 20:1 TAPER



- PLAN NOTES:**
- ALL TREES CUT WITHIN PROJECT LIMITS SHALL BE CUT INTO 4 FOOT LENGTHS AND PLACED ON THOMAS E. SMITH'S LAND AS AGREED UPON BY THE CONTRACTOR AND PROPERTY OWNER. ALL COSTS OF CUTTING AND PLACING THE 4 FOOT LENGTHS ARE CONSIDERED INCIDENTAL TO ITEM 201.10.
 - SIGN LOCATIONS SHOWN ARE APPROXIMATE. FINAL LOCATIONS WILL BE DETERMINED BY THE RESIDENT ENGINEER IN THE FIELD.
 - SEE SHEET 19 FOR NEW TREE PLANTINGS DETAILS.

SIGN LEGEND:
 N NEW SIGN OR POST

PROJECT NAME: MONTGOMERY
 PROJECT NUMBER: BHO 1448(23)

FILE NAME: Z96J302sh110y.dgn
 PROJECT LEADER: J.H.WEAVER
 DESIGNED BY: J.BICJA
 T.H. 27 ROADWAY PLAN

PLOT DATE: 8/1/2008
 DRAWN BY: J.B.McQUAID
 CHECKED BY: S.T.JAMES
 SHEET 12 OF 54

NOTE: FINAL LOCATION AND ELEVATIONS OF DRAINAGE ITEMS MAY BE ADJUSTED IN THE FIELD AS DEEMED NECESSARY BY THE RESIDENT ENGINEER.

T.H. 27 ROADWAY PLAN
 SCALE: 1" = 10'-0"
 10 0 10

Hoyle, Tanner & Associates, Inc.