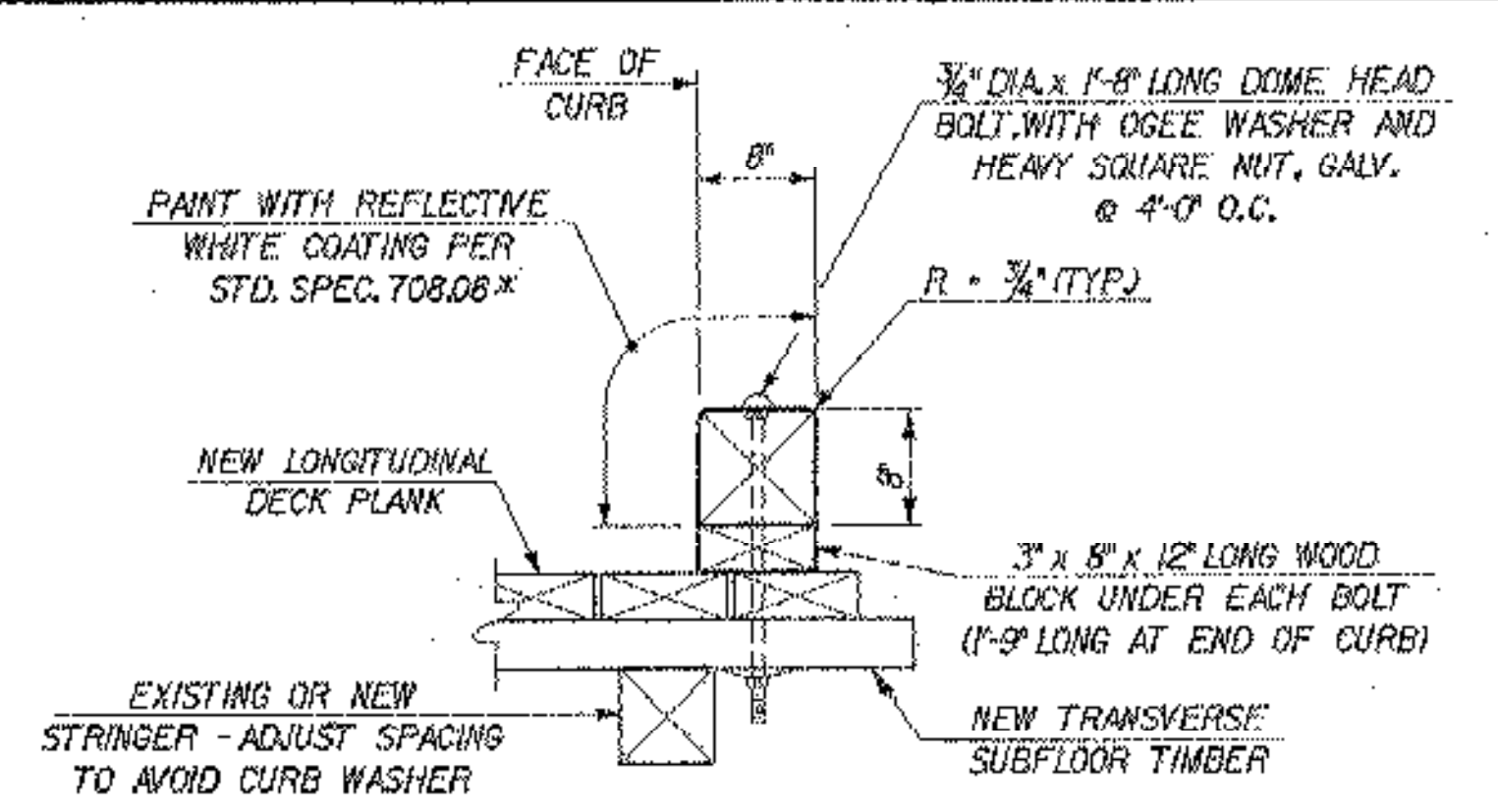
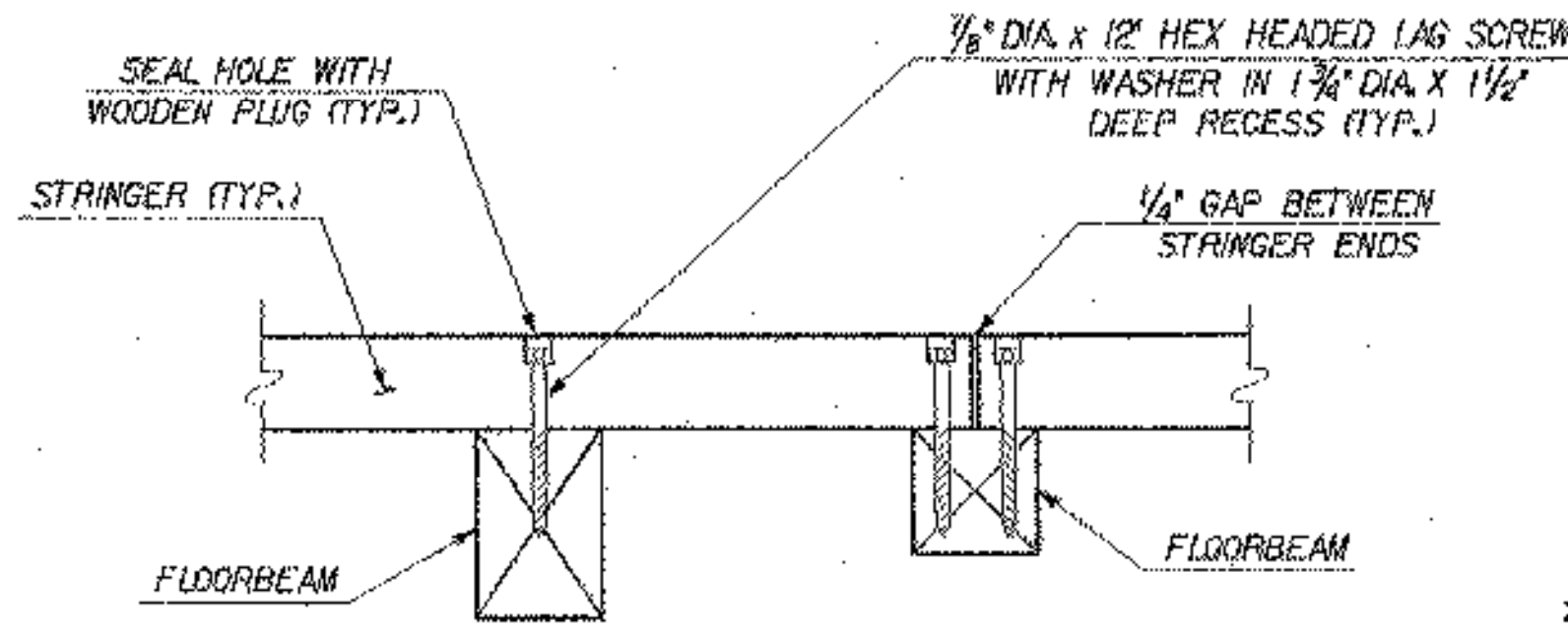


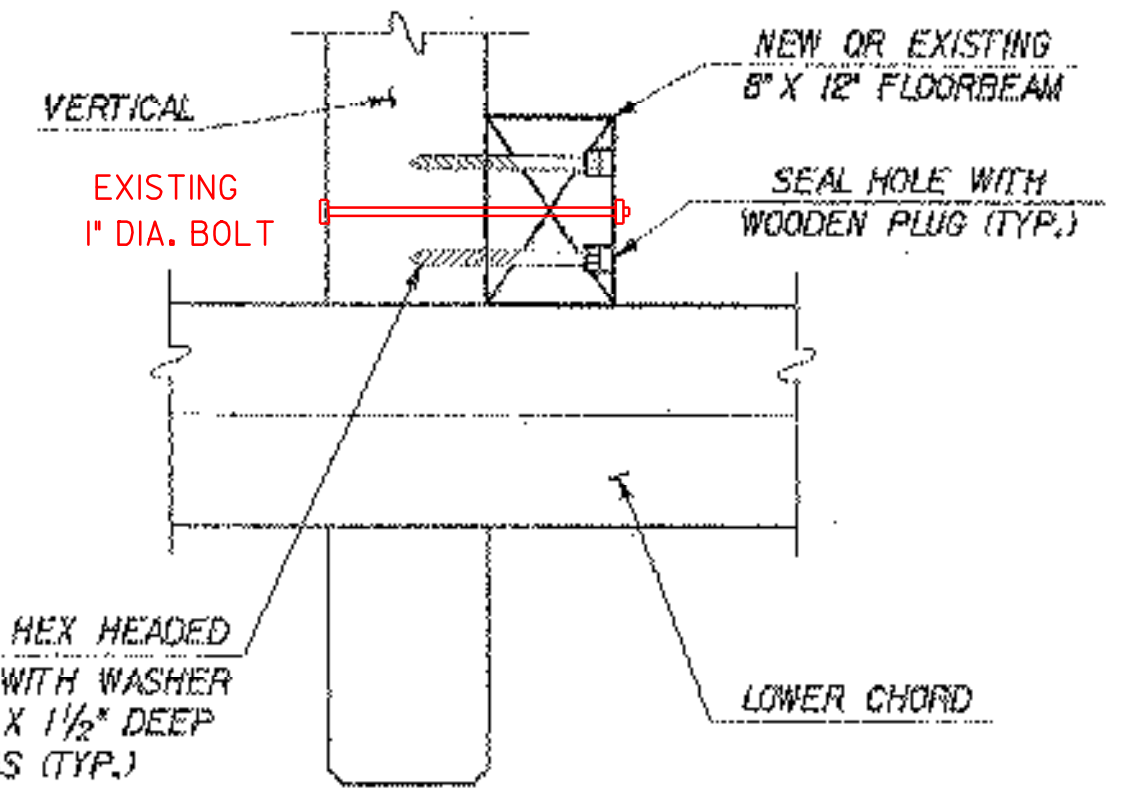
LOWER CHORD SPLICE DETAIL - ELEVATION
SCALE: 1/2" = 1'-0"



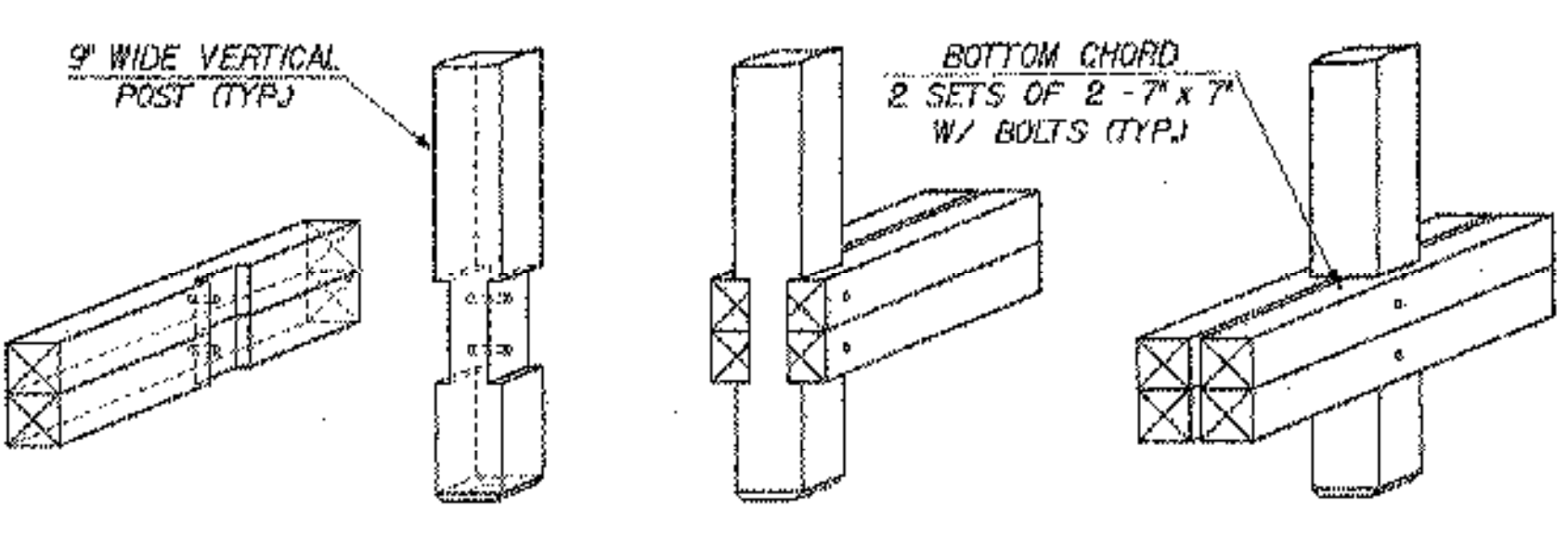
CURB DETAIL
N.T.S.



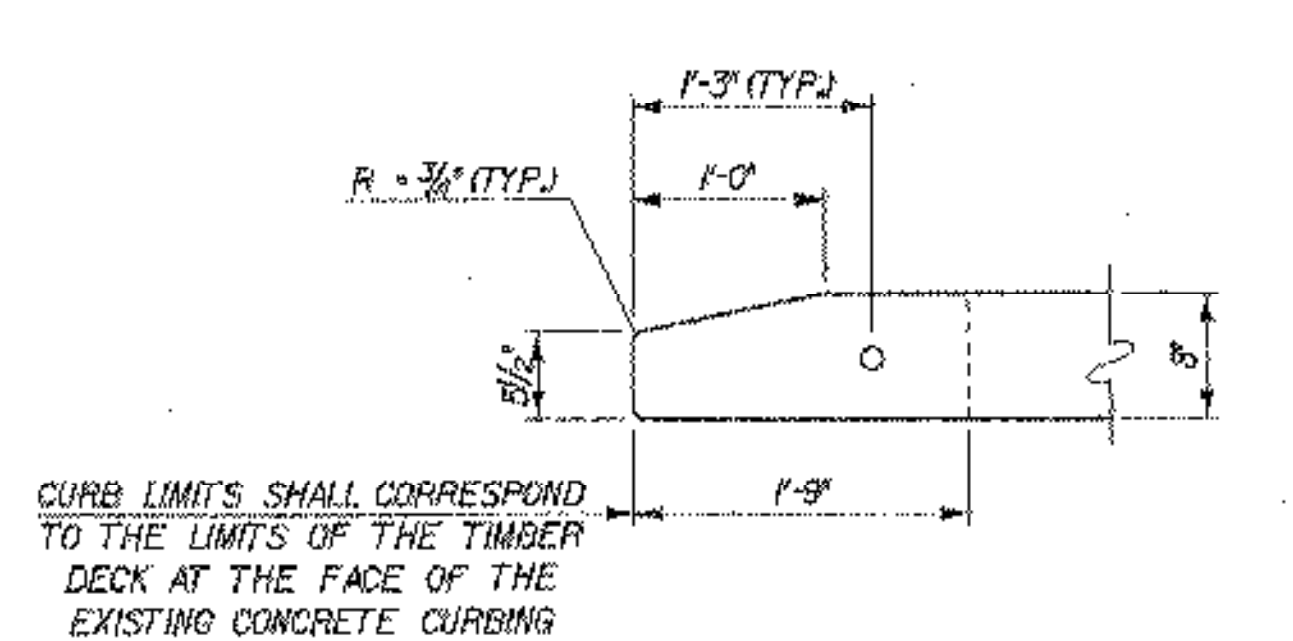
TYPICAL STRINGER TO FLOORBEAM CONNECTION
SCALE: 1" = 1'-0"



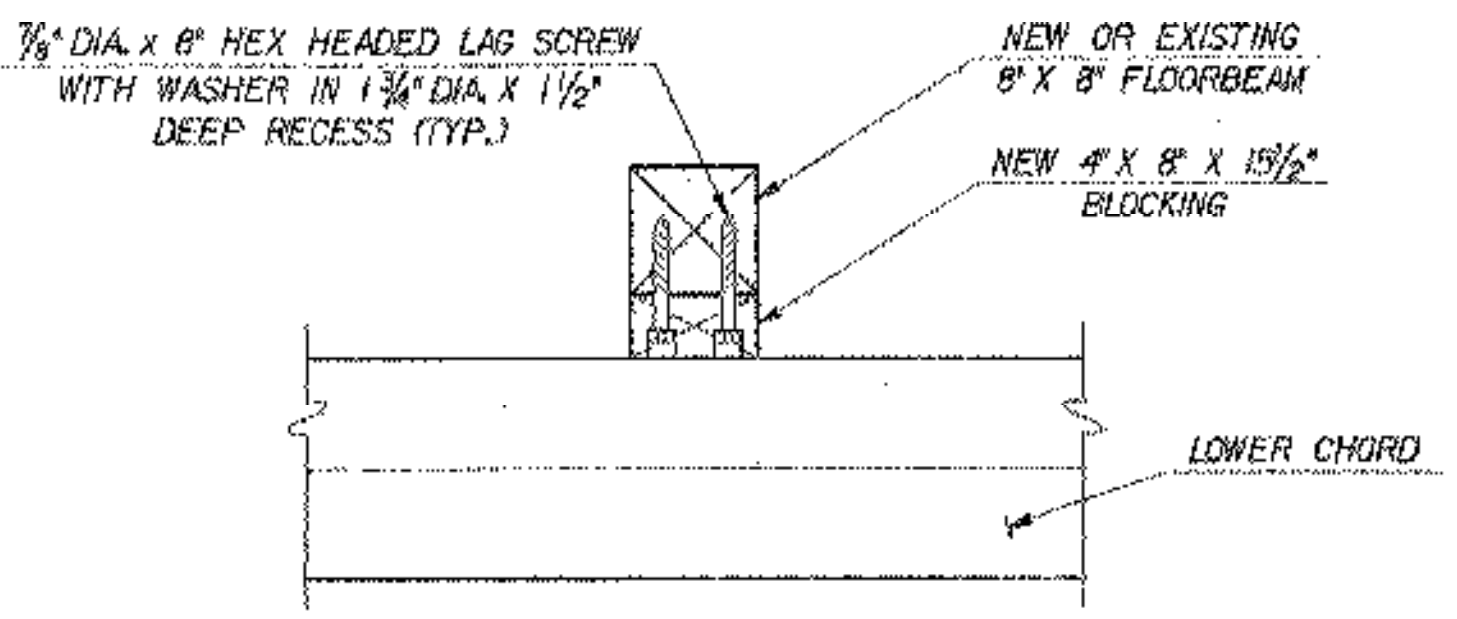
TYPICAL FLOORBEAM TO VERTICAL CONNECTION
SCALE: 1" = 1'-0"



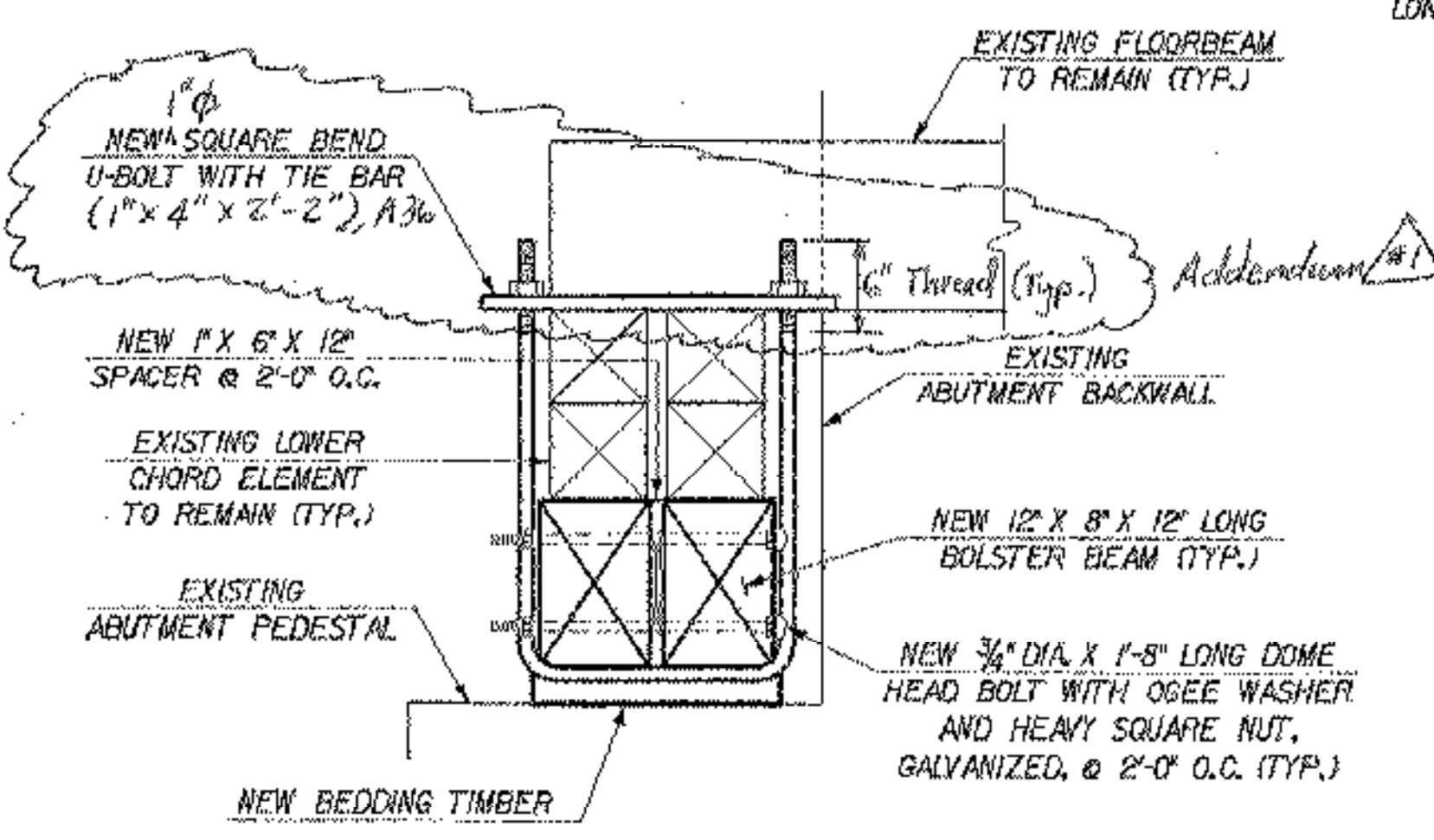
LOWER CHORD DETAIL - ISOMETRIC
SCALE: 1/2" = 1'-0"



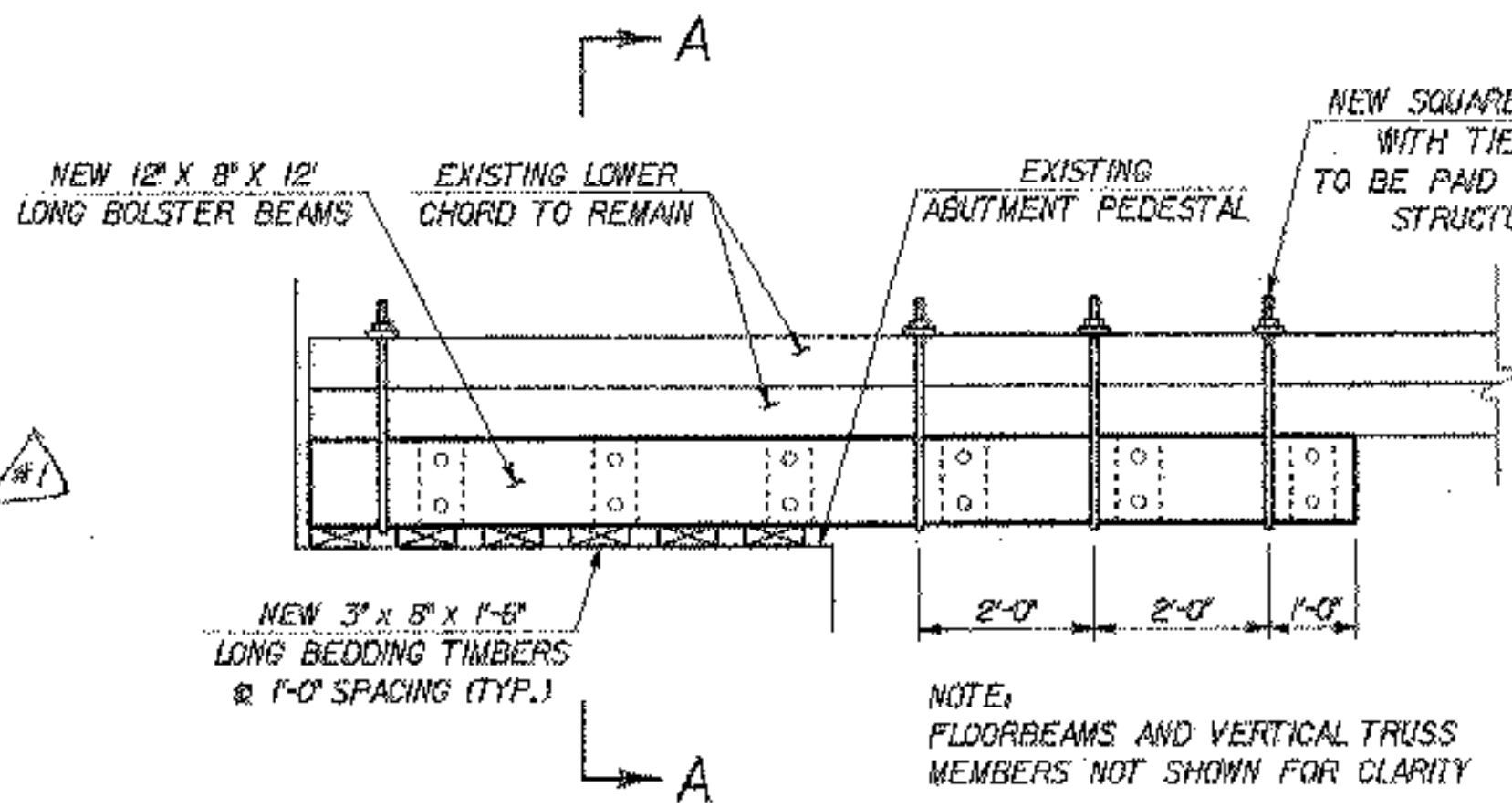
CURB END DETAIL - PLAN
N.T.S.



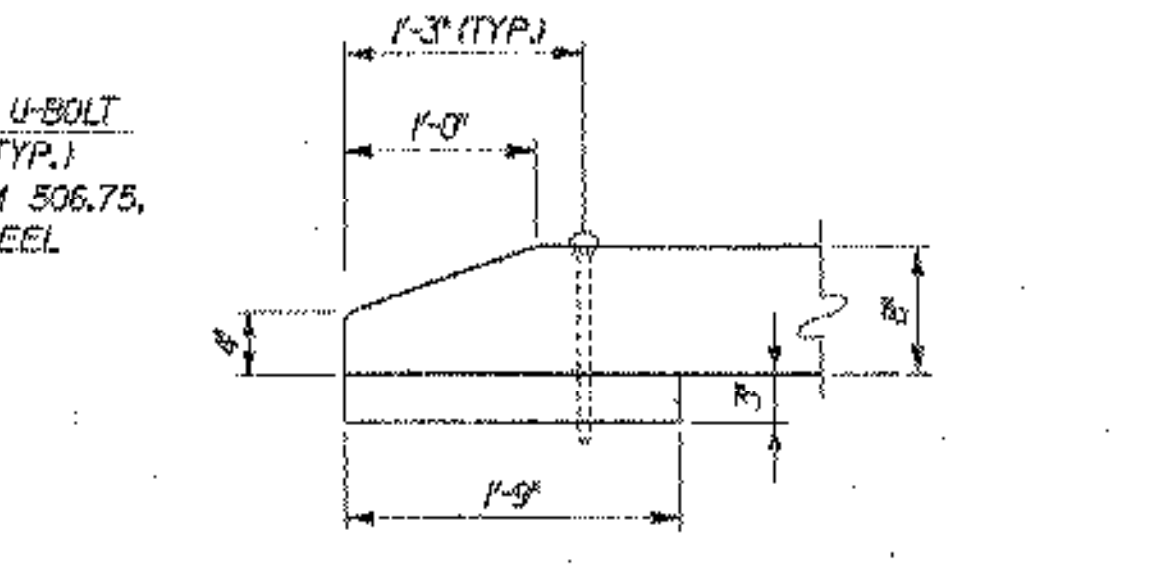
TYPICAL FLOORBEAM TO BLOCKING CONNECTION
SCALE: 1" = 1'-0"



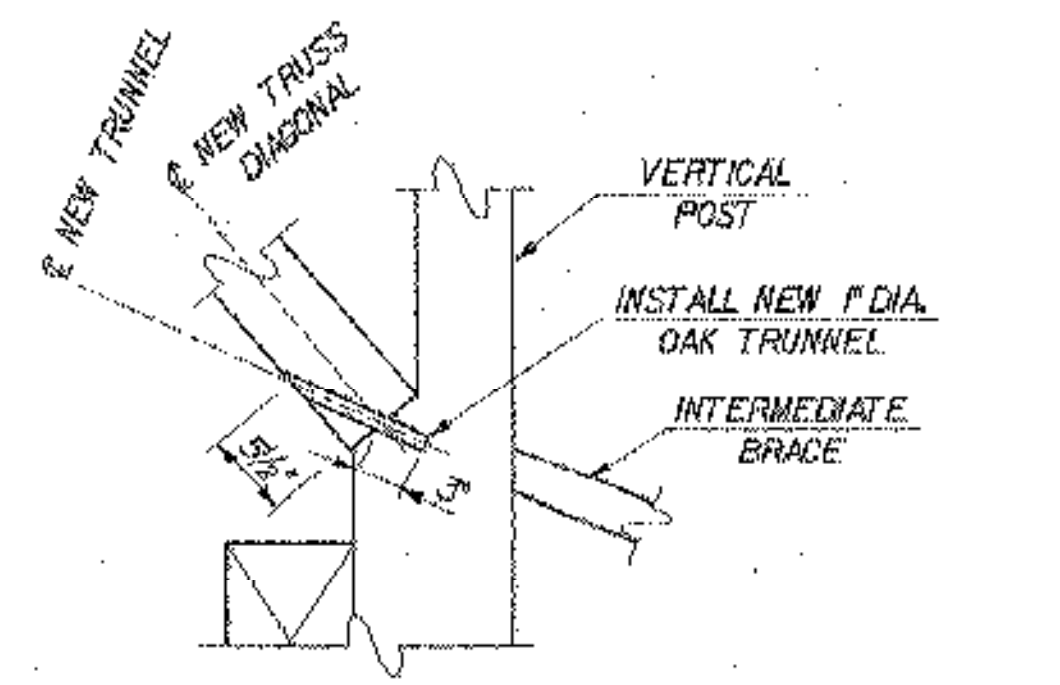
SECTION A-A
SCALE: 1" = 1'-0"



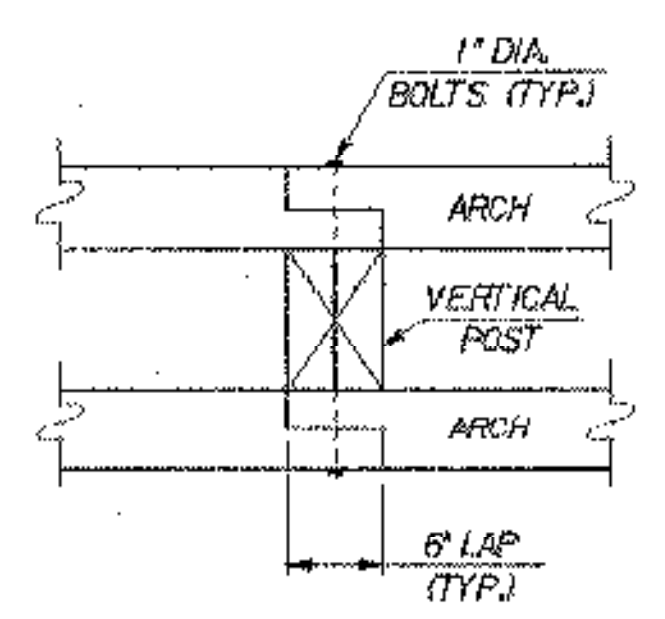
BOLSTER BEAM DETAIL - ELEVATION
SCALE: 1/2" = 1'-0"



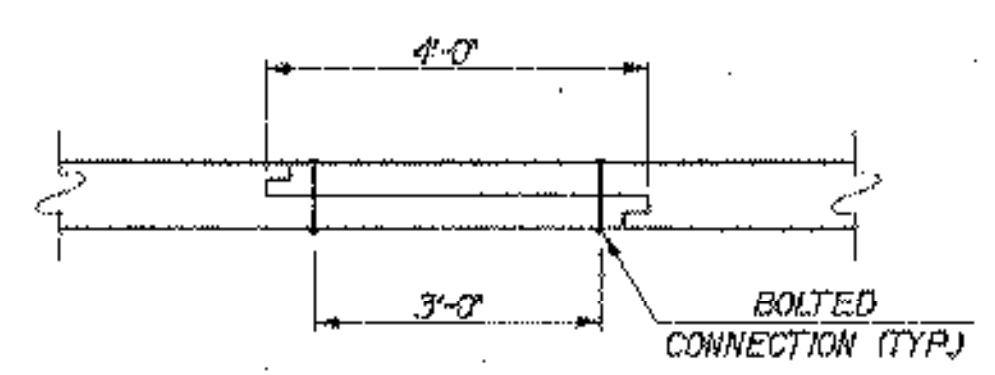
CURB END DETAIL - ELEVATION
N.T.S.



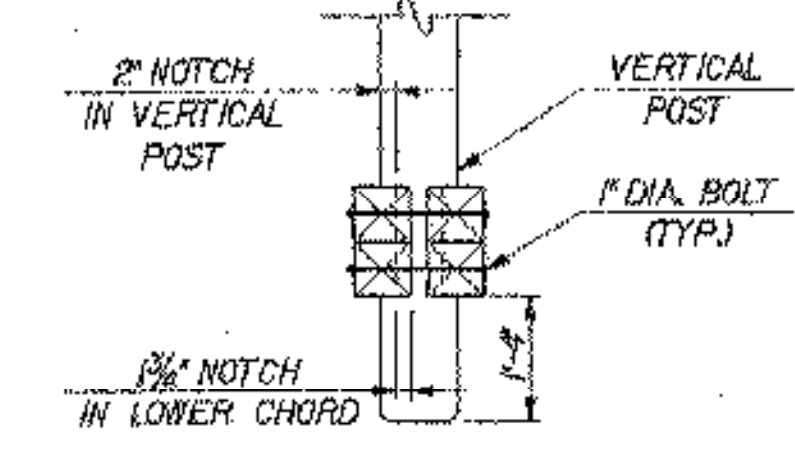
TRUNNEL DETAIL *
SCALE: 1" = 1'-0"



ARCH JOINT AT VERTICAL POST - PLAN
SCALE: 1" = 1'-0"



UPPER CHORD SPLICE DETAIL - PLAN
SCALE: 1/2" = 1'-0"



LOWER CHORD - VERTICAL POST CONNECTION DETAIL
SCALE: 1/2" = 1'-0"

NOTES

DETAILS AND DIMENSIONS SHOWN ON THIS SHEET ARE APPROXIMATE AND FOR INFORMATIONAL PURPOSES. THE CONTRACTOR SHALL BE RESPONSIBLE FOR MAKING FIELD MEASUREMENTS OF ALL EXISTING COMPONENTS TO ASSURE CONSISTENCY WITH PROPOSED MODIFICATIONS. FINAL TIMBER REMOVAL AND REPLACEMENT DETAILS SHALL BE PREPARED BY THE CONTRACTOR AND APPROVED BY THE RESIDENT ENGINEER PRIOR TO ADVANCING THE WORK.
* ALL DIAGONALS WHICH ARE TO REMAIN IN PLACE SHALL ALSO BE PINNED TO THE EXISTING VERTICALS USING THIS DETAIL. THIS WORK SHALL BE PAID AS ITEM 529.20, PARTIAL REMOVAL OF STRUCTURE (MOD.)



STATE OF VERMONT AGENCY OF TRANSPORTATION			
Town Of	CAMBRIDGE	Bridge No.	30
Highway No.	TH 31	Log Sta.	
		Surv. Sta.	
CANYON ROAD OVER BREWSTER RIVER			
MISCELLANEOUS DETAILS			
Designed By	B. COLEBURN	Drawn By	S. MERKMAN
Checked By	R. JOY	Date	05/03
		Bridge Design Supervisor	M. ZYDEL Date 05/03
PROJECT	CAMBRIDGE	PROJECT NO.	BHO 1448(24)
I.G.C. Info: m\549105\BRIDGE\acort\zj296mtd.dgn			
Bridge Sheet No.		Sheet	7 of 26

PLOTTED 02-10-2003