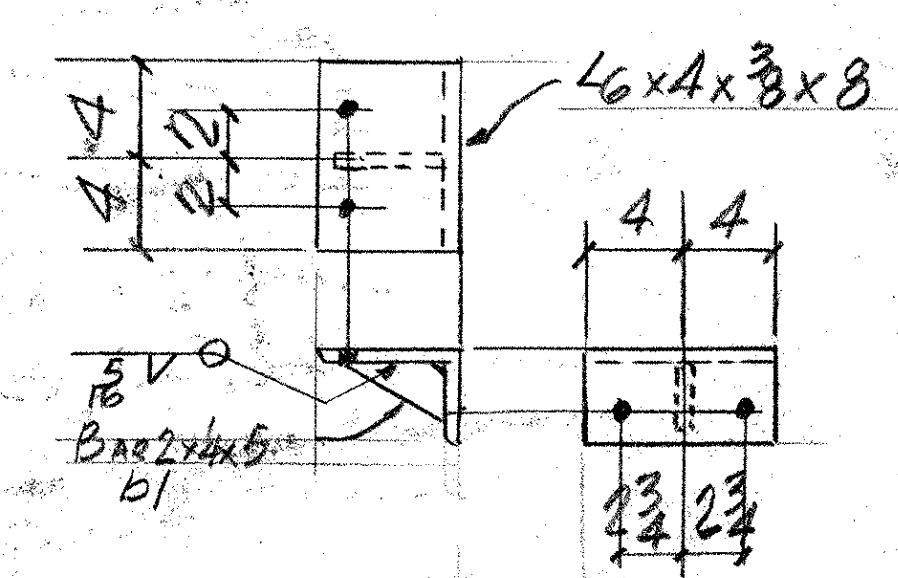
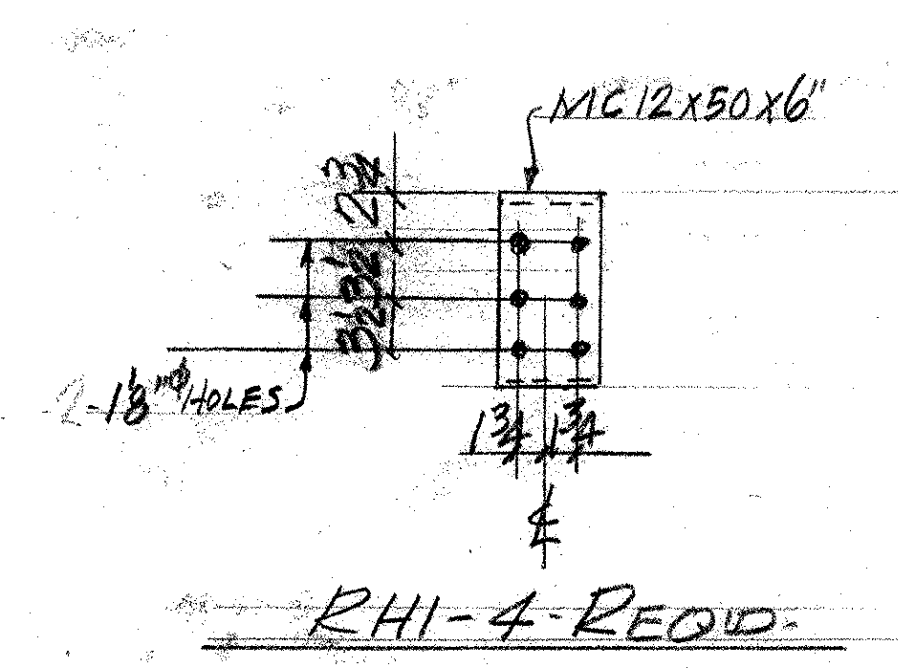
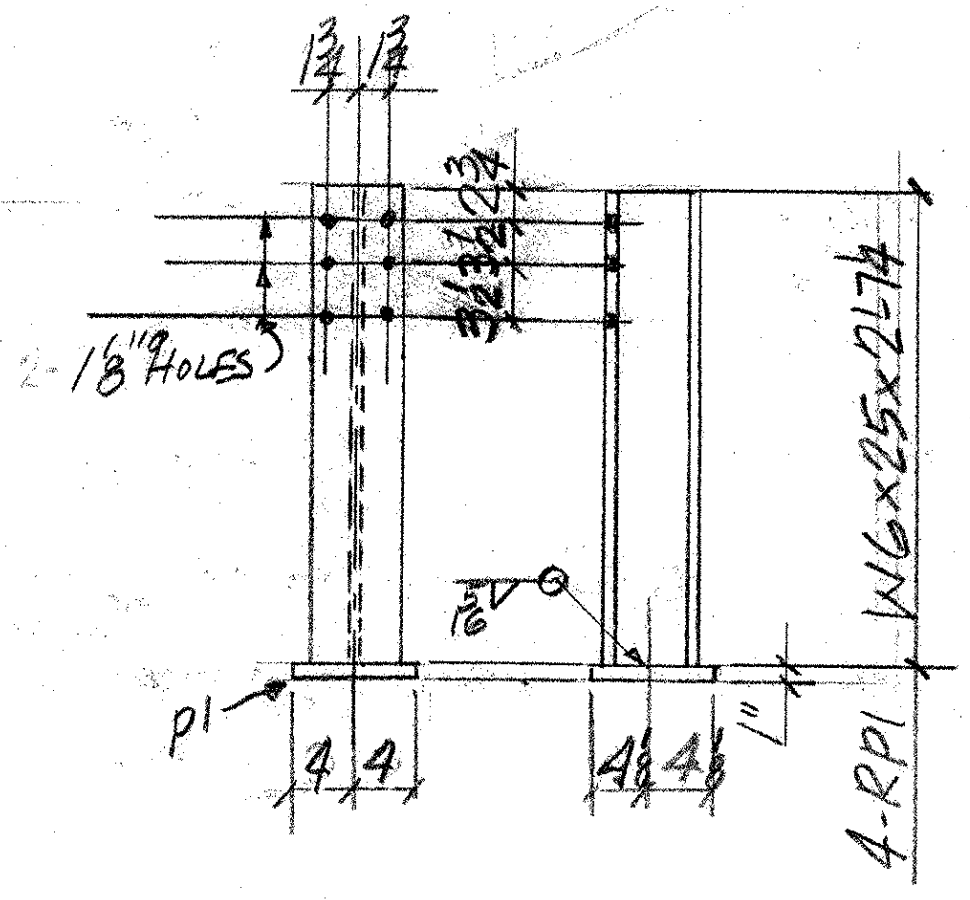


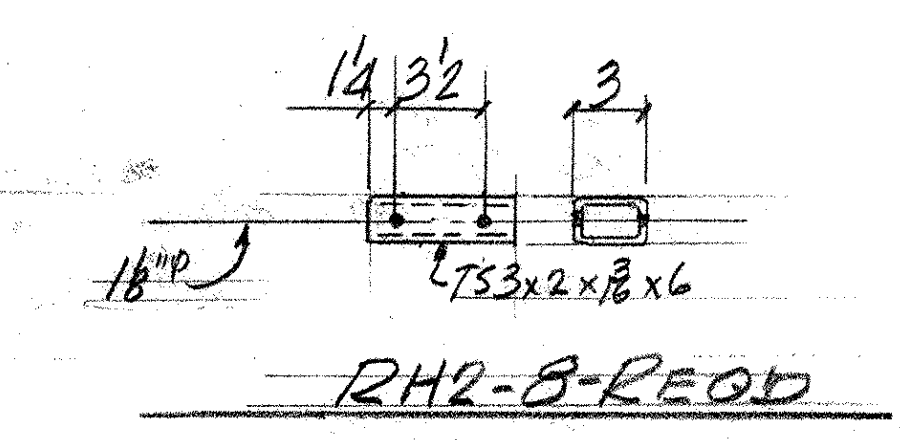
RK1-20-REQ'D.



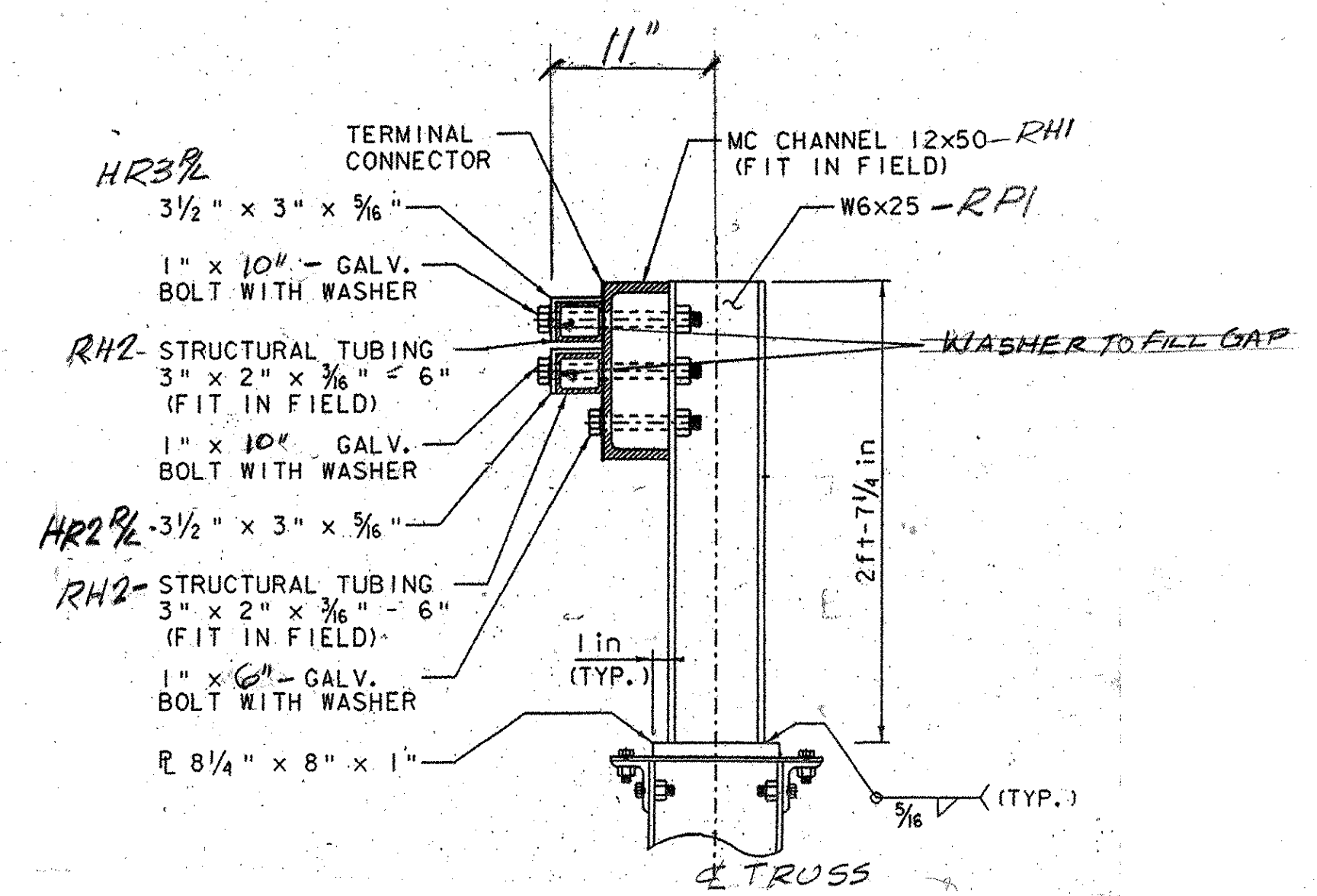
RK2-16-REQ'D.



RH1-4-REQ'D.



RH2-8-REQ'D.



END POST-FIELD ASSEMBLY

ABM INFO		SHOP BILL				JOB NO. 314	DRG. NO. 54		
PAGE	LINE	NO.	DESCRIPTION	FT	IN	ASSEM. MARK	SHIPPING MARK	REMARKS	WEIGHT
	12		L3 1/2 x 3 x 5/16	20	11 1/2		HR1	506.50	
	2		DO	21	5 3/4		HR2R		
	2		DO	21	5 3/4		HR2L		
	2		DO	21	11 1/2		HR3R		
	2		DO	21	11 1/2		HR3L		
	20		L6 x 6 x 2	22			RK1	506.60	
	16		L6 x 4 x 3/8	8			RK2	506.60	
	16		BAR 2 x 5	5	61		DO		
	4		W6 x 25	2	7 1/2		RPI	506.56	
	4		RPI x 8	3 1/2			DO	506.60	
	4		MC12x50	6			RH1	506.60	
	8		L5 3/8 x 2 x 1/8	6			RH2	506.60	
FIELD BOLTS									
	124		3/4\"/>						

PAY ITEM - AS NOTED.

OUT FOR APPROVAL	3-27-07		
OUT FOR APPROVAL	4-23-07	5-31-07	
ISSUED TO SHOP			
FIELD & OFFICE			

REV.	REMARKS	DATE	DWN	CHK	APP	Q.A.	NO.	DIA.	LGT	TYPE	WASHER
PROJECT NO. STP. 1447 (28) STATE PROJECT NO.											
MATERIAL: A572-50 ELECTRODES: SEE PROC HOLES: 1/8\"/>											

DESCRIPTION: BRIDGE RAIL	DRAWN BY	DATE
JOB: IMPROVEMENTS	JPF	3-07
CREAMERY BRIDGE	CHKD BY	
BRADFORD, VT.	EJ	
	APPROV BY	
	Q.A.	

CUSTOMER: AUSTIN CONSTR.	JOB NO.	DRG. NO.
CASCO BAY STEEL STRUCTURES, INC.	314	54
75 SPRING HILL ROAD SACO, MAINE 04072		
PHONE (207) 282-7360 FAX (207) 282-1179		

RECEIVED  
 OK'D BY \_\_\_\_\_ OK'D BY RSW  
 JUN 04 2007  
 RESUBMIT APPROVED /  
 BY CPW DATE 6/6/07