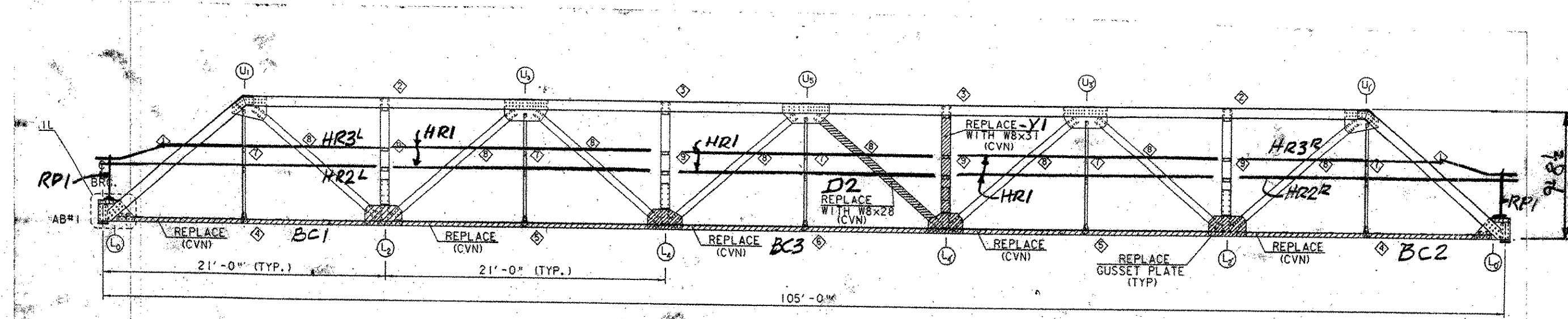
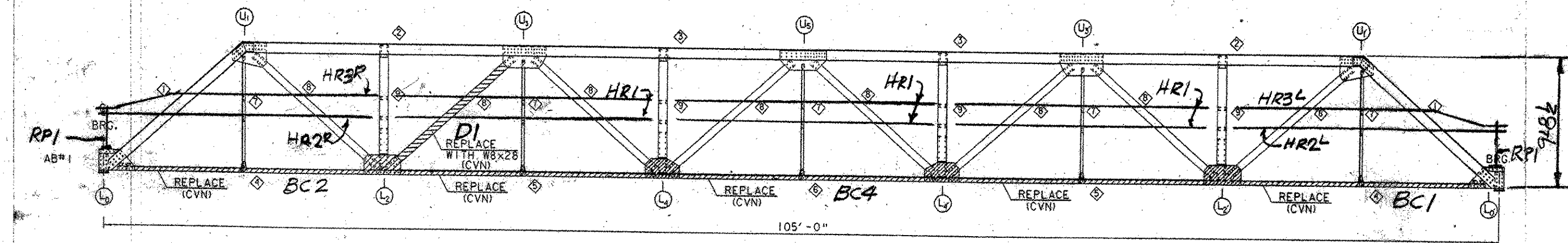


TRUSS MEMBER DESCRIPTIONS

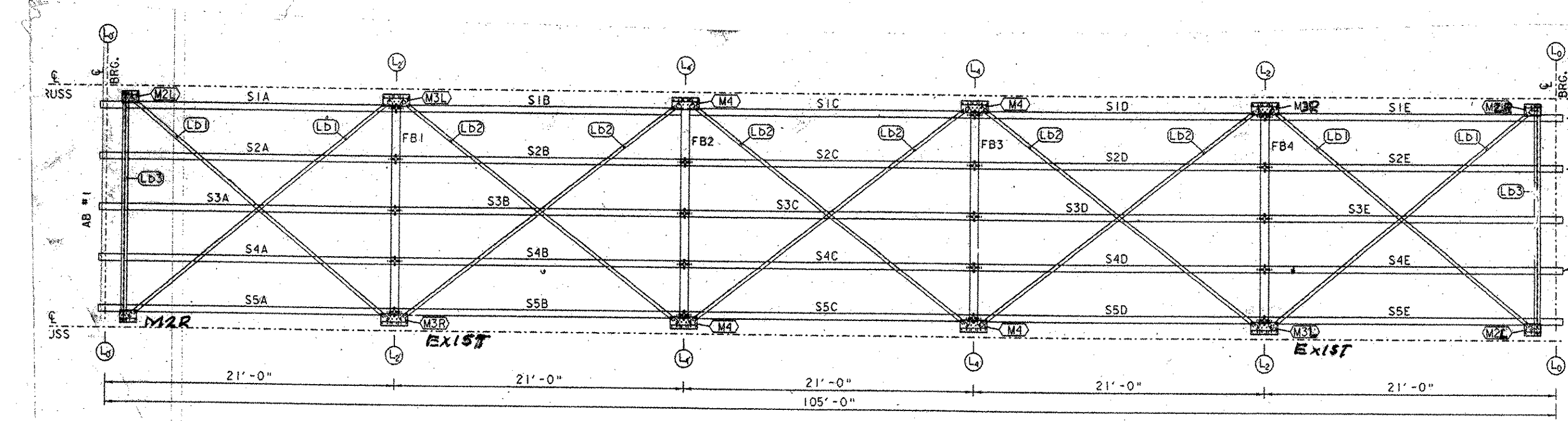
| TRUSS MEMBER NUMBER | TRUSS MEMBER         | MEMBER DESCRIPTION  |
|---------------------|----------------------|---|
| ◇                   | UPPER CHORD DIAGONAL | TWO (2) C 9 x 13.4 CHANNELS<br>ONE (1) 14" x 1/4" COVER PLATE |
| ◇                   | UPPER CHORD MEMBER   | TWO (2) C 9 x 13.4 CHANNELS<br>ONE (1) 14" x 1/4" COVER PLATE |
| ◇                   | UPPER CHORD MEMBER   | TWO (2) C 9 x 20 CHANNELS<br>ONE (1) 14" x 1/4" COVER PLATE   |
| ◇                   | LOWER CHORD MEMBER   | TWO (2) L 4 x 3 x 3/8 ANGLES                                  |
| ◇                   | LOWER CHORD MEMBER   | TWO (2) L 4 x 3 x 3/8 ANGLES<br>ONE (1) 8" x 3/4" COVER PLATE |
| ◇                   | LOWER CHORD MEMBER   | TWO (2) L 4 x 3 x 3/8 ANGLES<br>ONE (1) 8" x 3/4" COVER PLATE |
| ◇                   | VERTICAL WEB MEMBER  | ONE (1) L 2 1/2 x 2 1/2 x 1/4 ANGLE                           |
| ◇                   | DIAGONAL WEB MEMBER  | ONE (1) 8 CB 21 ROLLED I-BEAM                                 |
| ◇                   | VERTICAL WEB MEMBER  | ONE (1) 8 CB 31 ROLLED I-BEAM                                 |



NORTH TRUSS ELEVATION  
LOOKING NORTH  
SCALE 1/4" = 1'-0"



SOUTH TRUSS ELEVATION  
LOOKING NORTH  
SCALE 1/4" = 1'-0"



PROPOSED FLOOR PLAN

FLOOR MEMBER DESCRIPTIONS

| FLOOR MEMBER            | SYMBOL                    | DESCRIPTION                               |
|-------------------------|---------------------------|---|
| STRINGER BEAM           | S1A-S5A AND S1E-S5E       | ONE (1) W10 x 30 x 21'-5"                 |
| STRINGER BEAM           | S1B-S5B, S1C-S5C, S1D-S5D | ONE (1) W10 x 30 x 20'-9 3/4"             |
| FLOOR BEAM              | FB1 - FB4                 | ONE (1) W16 x 50 x 16'-8 1/4"             |
| LATERAL BRACING         | LB1                       | ONE (1) L3 x 2 1/2 x 3/8 x 24'-8 1/4"     |
| LATERAL BRACING         | LB2                       | ONE (1) L3 x 2 1/2 x 3/8 x 25'-7 3/8"     |
| LATERAL BRACING         | LB3                       | TWO (2) L2 1/2 x 2 1/2 x 3/8 x 16'-8 1/4" |
| GUSSET PLATE-HORIZONTAL | M2L                       | ONE (1) 10 1/2" x 3/8" x 1'-2 1/2" PLATE  |
| GUSSET PLATE-HORIZONTAL | M2R                       | ONE (1) 10 1/2" x 3/8" x 1'-2 1/2" PLATE  |
| GUSSET PLATE-HORIZONTAL | M3L                       | ONE (1) 10 1/2" x 3/8" x 1'-1 1/2" PLATE  |
| GUSSET PLATE-HORIZONTAL | M3R                       | ONE (1) 10 1/2" x 3/8" x 1'-1 1/2" PLATE  |
| GUSSET PLATE-HORIZONTAL | M4                        | ONE (1) 10 1/2" x 3/8" x 2'-1" PLATE      |

|                  |  |             |             |     |     |      |     |      |     |             |        |
|------------------|--|-------------|-------------|-----|-----|------|-----|------|-----|-------------|--------|
| OUT FOR APPROVAL | 3-27-07  |             |             |     |     |      |     |      |     |             |        |
| OUT FOR APPROVAL | 4-24-07  | 53102       |             |     |     |      |     |      |     |             |        |
| ISSUED TO SHOP   |  |             |             |     |     |      |     |      |     |             |        |
| FIELD & OFFICE   |  |             |             |     |     |      |     |      |     |             |        |
| REV.             | REMARKS  | DATE        | DWN         | CHK | APP | Q.A. | NO. | DIA. | LGT | TYPE        | WASHER |
|                  | PROJECT NO. STP 1447(26)   |             |             |     |     |      |     |      |     |             |        |
|                  | MATERIAL:  | ELECTRODES: | HOLES:      |     |     |      |     |      |     | SHOP BOLTS: |        |
|                  | SURFACE PREP. & PAINT: BLAST CLEAN-SP10<br>SHERWIN WILLIAMS - 2 COAT SYSTEM<br>PRIMER-COROTHENE I GALVAPAC<br>SECOND COAT-FASTCLAD VATHANE |             |             |     |     |      |     |      |     |             |        |
|                  | DESCRIPTION: FRAMING PLAN  | DRAWN BY    | DATE        |     |     |      |     |      |     |             |        |
|                  | JOB:   | JPF         | 3-07        |     |     |      |     |      |     |             |        |
|                  | IMPROVEMENTS   | CHKD BY     | F.J.        |     |     |      |     |      |     |             |        |
|                  | CREAMERY BRIDGE  | APPROV BY   | [Signature] |     |     |      |     |      |     |             |        |
|                  | BRADFORD, VT.  | Q.A.        |             |     |     |      |     |      |     |             |        |
|                  | CUSTOMER: AUSTIN CONSTR.   |             |             |     |     |      |     |      |     |             |        |
|                  | CASCO BAY STEEL STRUCTURES, INC.   | JOB NO.     | 314         |     |     |      |     |      |     |             |        |
|                  | 75 SPRING HILL ROAD SACO, MAINE 04072  | DRG. NO.    | E1          |     |     |      |     |      |     |             |        |
|                  | PHONE (207) 282-7360 FAX. (207) 282-1179   | REV.        | [Signature] |     |     |      |     |      |     |             |        |

RECEIVED  
 JUN 4 2007  
 BY OPW DATE 6/6/07