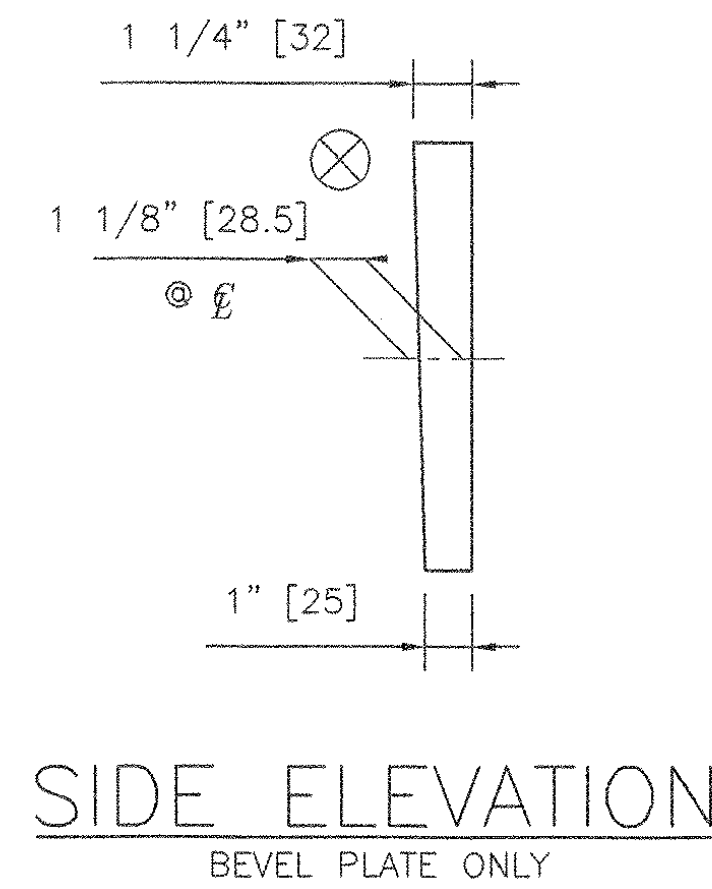
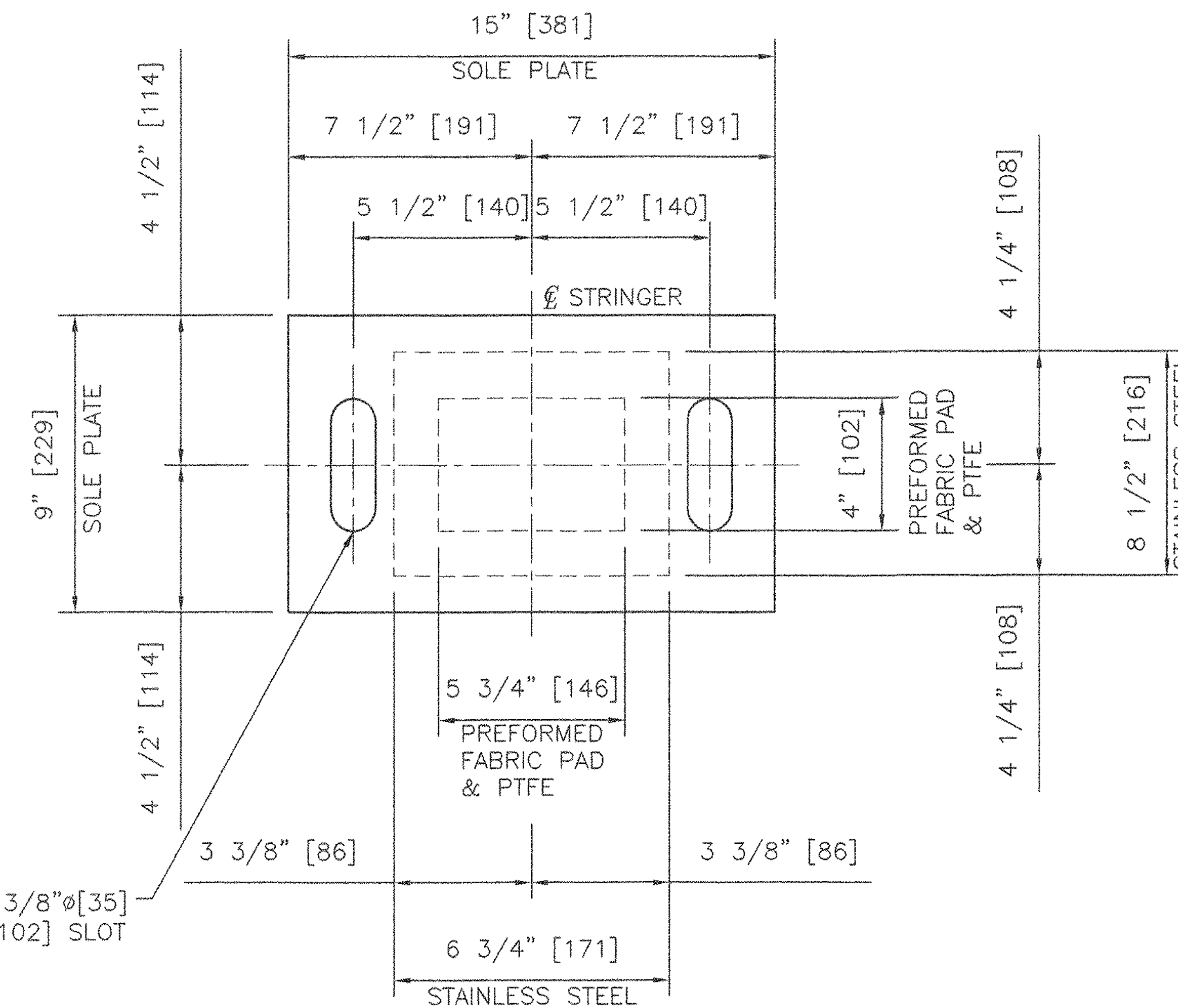


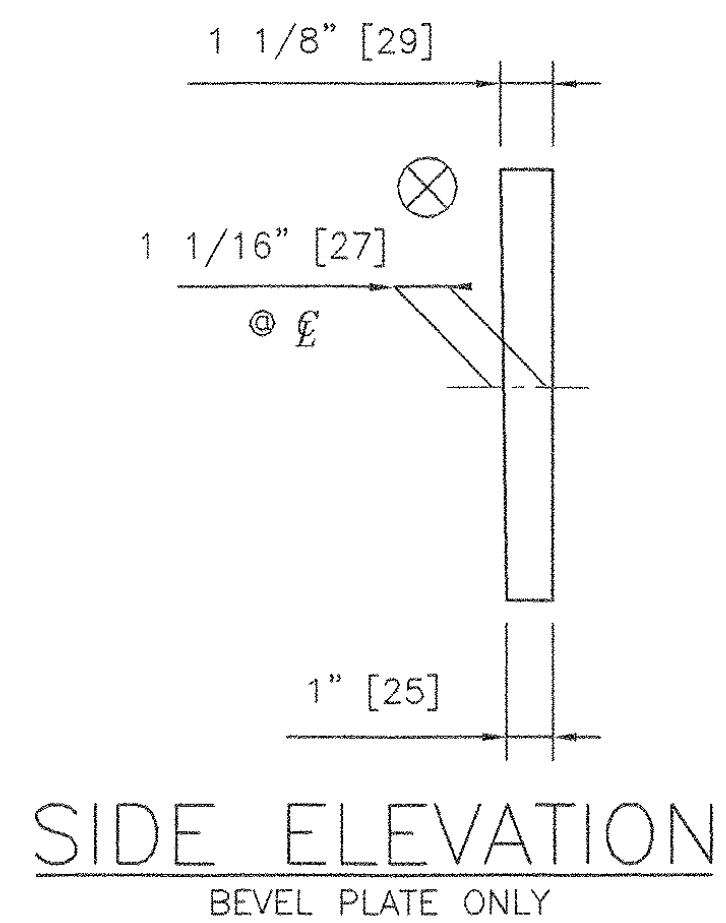
PLAN



SIDE ELEVATION
BEVEL PLATE ONLY



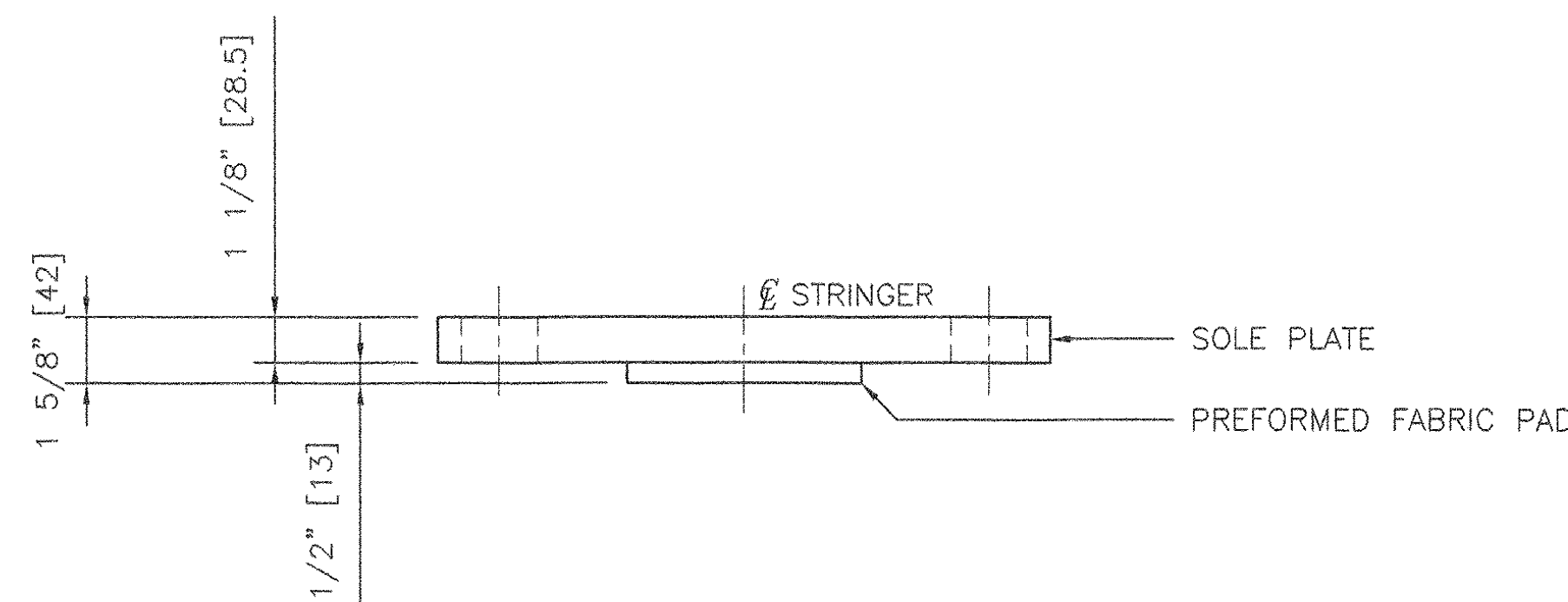
PLAN



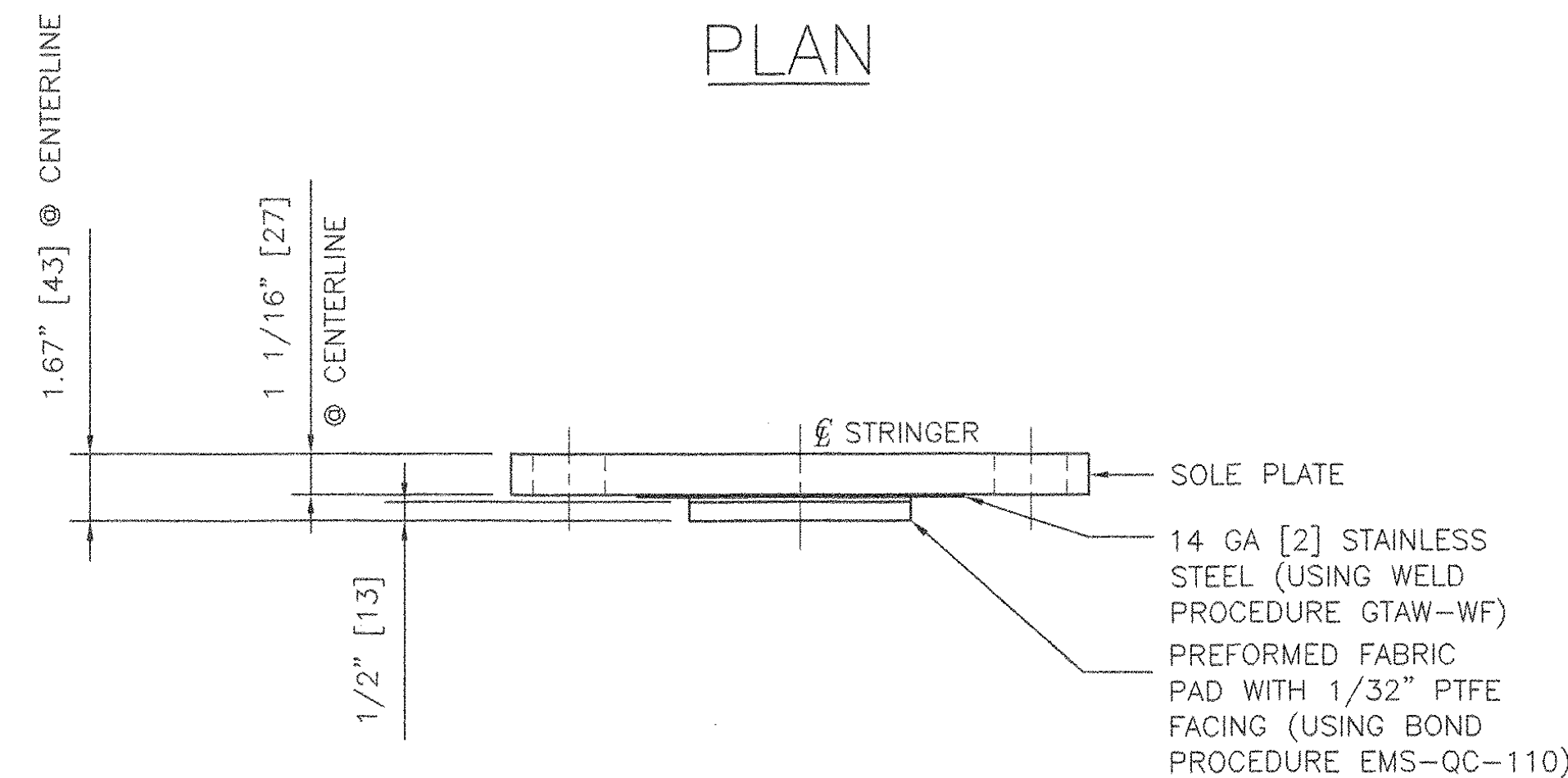
SIDE ELEVATION
BEVEL PLATE ONLY

- BEARING MATERIALS**
1. STEEL - AASHTO M-270 GR 36 ZINC METALIZED
 2. PREFORMED FABRIC PAD - AASHTO SPECIFICATION DIV.II SPEC. 18.4.9.1
 3. STAINLESS STEEL - ASTM A240 TYPE 304, #8 MIRROR FINISH
 4. PTFE - ASTM D.4894 VIRGIN UNFILLED
 5. ANCHOR BOLTS - SEE DETAIL

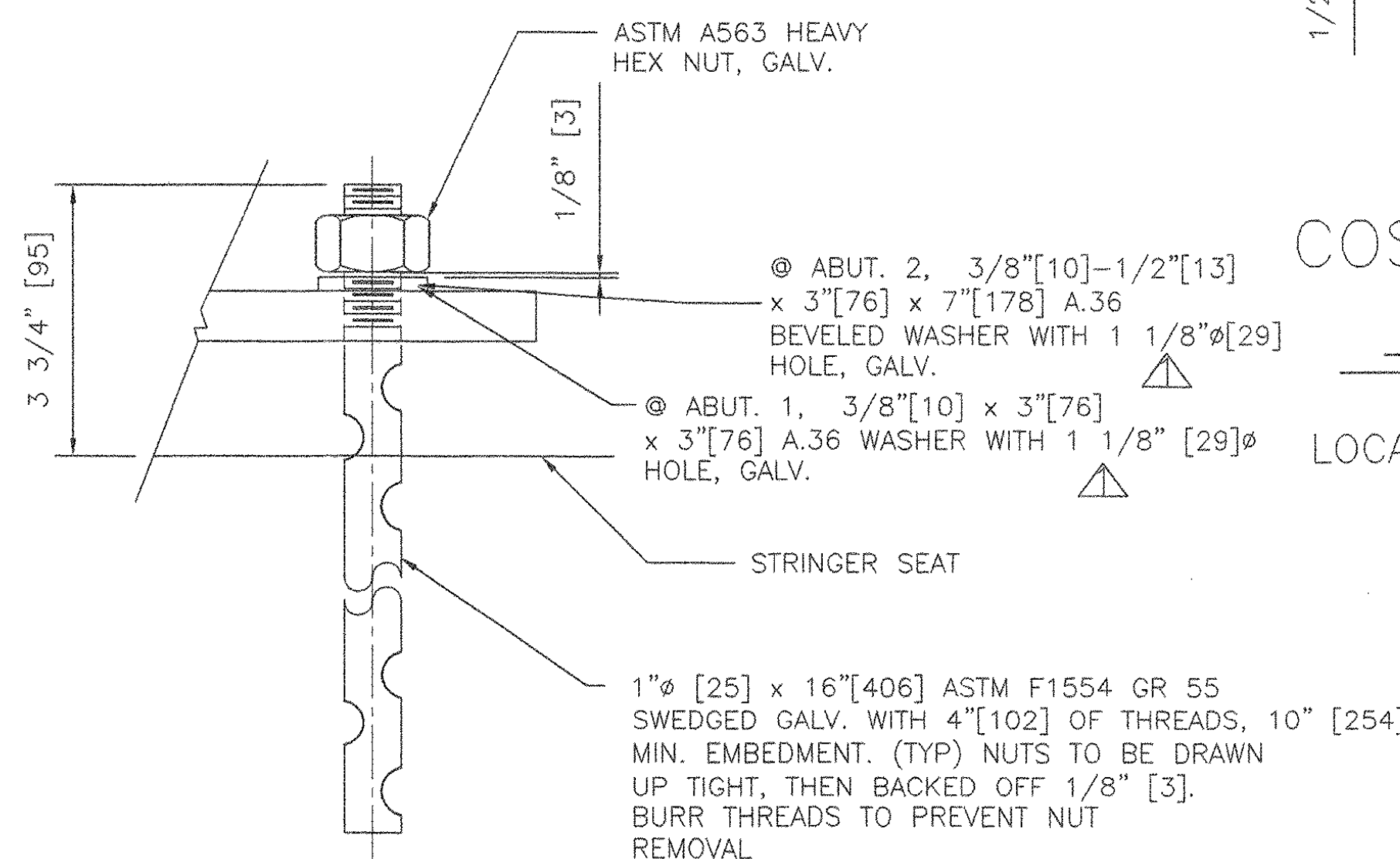
- BEARING NOTES:**
1. LOCATION OF FABRICATION - 70 SOUTH STREET WALPOLE, MA 02081
 2. COSMEC, INC. REPRESENTATIVE: MR. MATT McANDREWS (508-668-6600)
 3. UNITS= INCHES [MM]
 4. ALL BEARING DEVICES SHALL BE ZINC METALIZED AS PER SUBSECTIONS 531.04(b) AND 506.15(c) OR (b). BEARINGS SHALL BE SEALED WITH AN APPROVED SEALER AS SPECIFIED IN STANDARD SPEC. SUBSECTION 506.15(b). AREAS OF METALIZING DAMAGED BY FIELD WELDING OR HANDLING SHALL BE PAINTED WITH AN APPROVED SEALANT, IN ACCORDANCE WITH SUPPLEMENTAL SPECIFICATION 513.03(f).
 5. MAXIMUM ALLOWABLE BEARING PRESSURE ON CONCRETE= 1000 PSI
MINIMUM ALLOWABLE DESIGN ROTATION= 0.015 RADIAN
HORIZONTAL CAPACITY SHALL BE A MINIMUM OF 10% VERTICAL LOAD
DESIGN LOAD PER BEARING: 258 kN [58.10 KIPS] TRUSS
80 kN [18.00 KIPS] STRINGER
 6. ⊗ MARKS HIGH END OF BEVELED



FRONT ELEVATION
COSMEC FIXED PREFORMED
FABRIC PAD BEARING
QTY.- 3
LOCATION- ABUT. 1 STRINGERS S2A, S3A, S4A



FRONT ELEVATION
COSMEC EXPANSION PREFORMED
FABRIC PAD BEARING
QTY.- 3
LOCATION- ABUT. 2 STRINGERS S2A, S3A, S4A



ANCHOR BOLT DETAIL

RECEIVED
JUN 11 2007
BY: *apw* DATE: 6/12/07

REV. 1	REVISED AS NOTED PER APPROVED AS NOTED DRAWINGS	BY: MM	DATE: 4/07	CHK'D BY: MCM	DATE: 4/07	CUSTOMER: AUSTIN CONSTRUCTION, INC.	S.O. NUMBER: 60712	DRAWING NUMBER: 5194	REV. 1
--------	---	--------	------------	---------------	------------	-------------------------------------	--------------------	----------------------	--------

STATE OF VERMONT
AGENCY OF TRANSPORTATION
TOWN OF BRADFORD
ORANGE COUNTY
PROJECT NO. STP 1447(28)
ITEM 531.10
BRIDGE NO.22

COSMEC, INC. 70 SOUTH STREET WALPOLE, MA. 02081
SCALE: 1/4"=1" DRAWN BY: MAE CHECKED BY: MRR
DATE: 2/13/07 DATE: 3/5/07
COSMEC BEARINGS