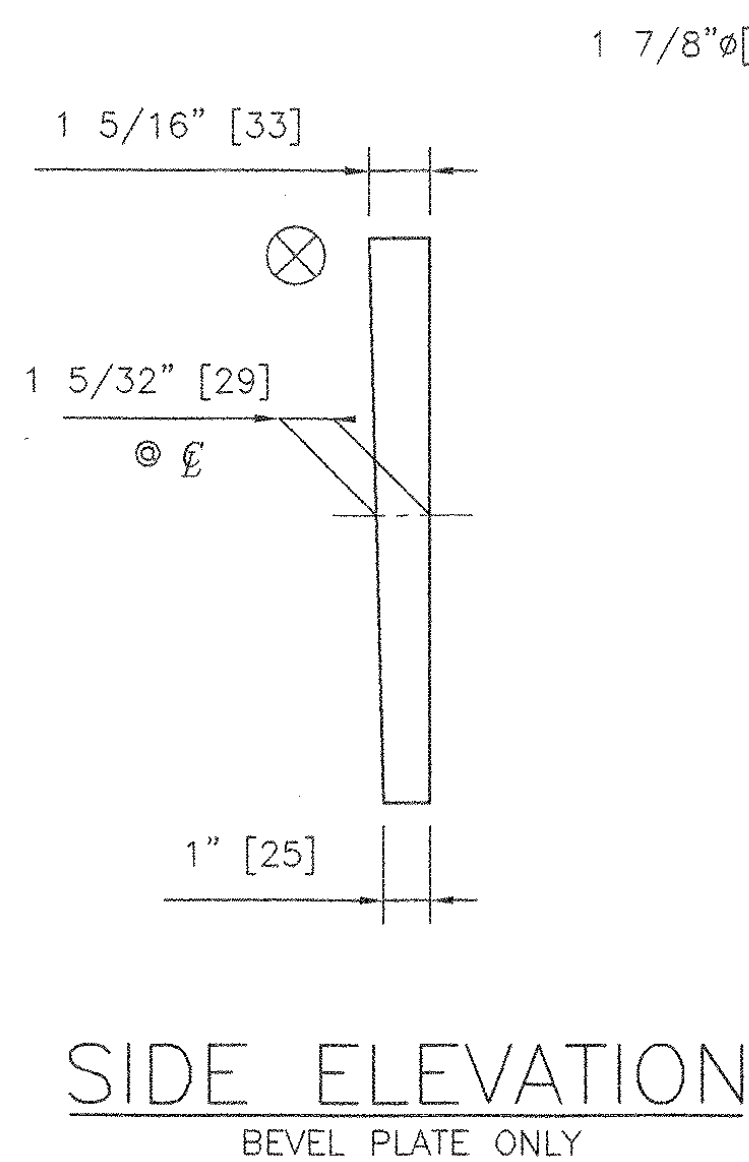
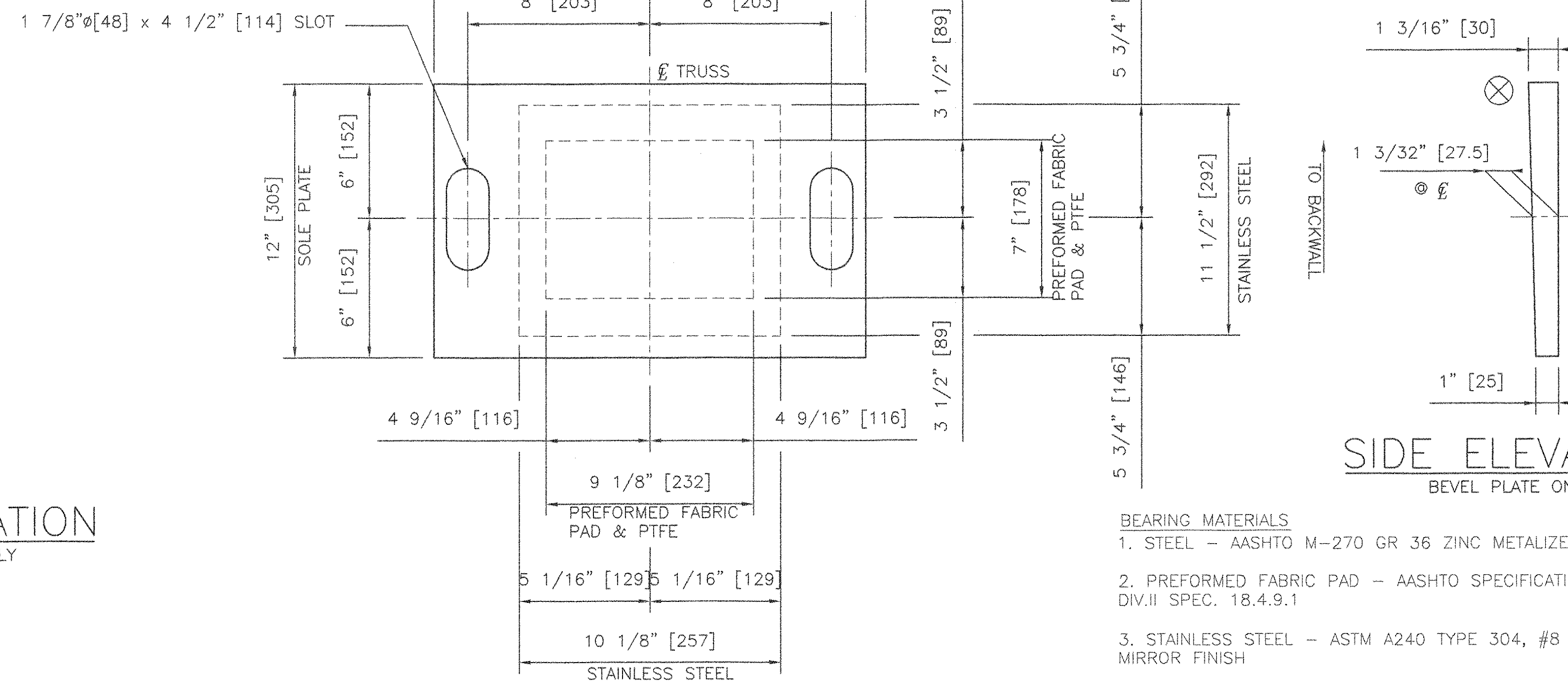


PLAN



SIDE ELEVATION  
BEVEL PLATE ONLY



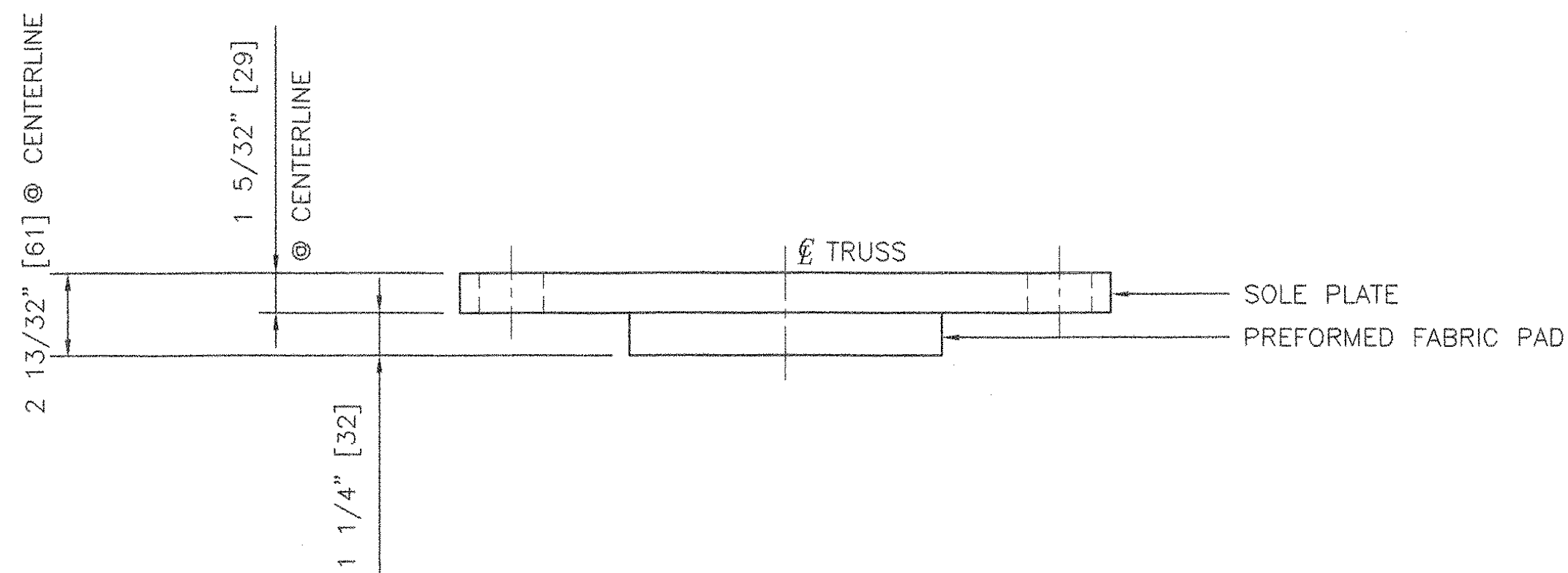
PLAN

SIDE ELEVATION  
BEVEL PLATE ONLY

- BEARING MATERIALS**
1. STEEL - AASHTO M-270 GR 36 ZINC METALIZED
  2. PREFORMED FABRIC PAD - AASHTO SPECIFICATION DIV.II SPEC. 18.4.9.1
  3. STAINLESS STEEL - ASTM A240 TYPE 304, #8 MIRROR FINISH
  4. PTFE - ASTM D4894 VIRGIN UNFILLED
  5. ANCHOR BOLTS - SEE DETAIL
- BEARING NOTES:**

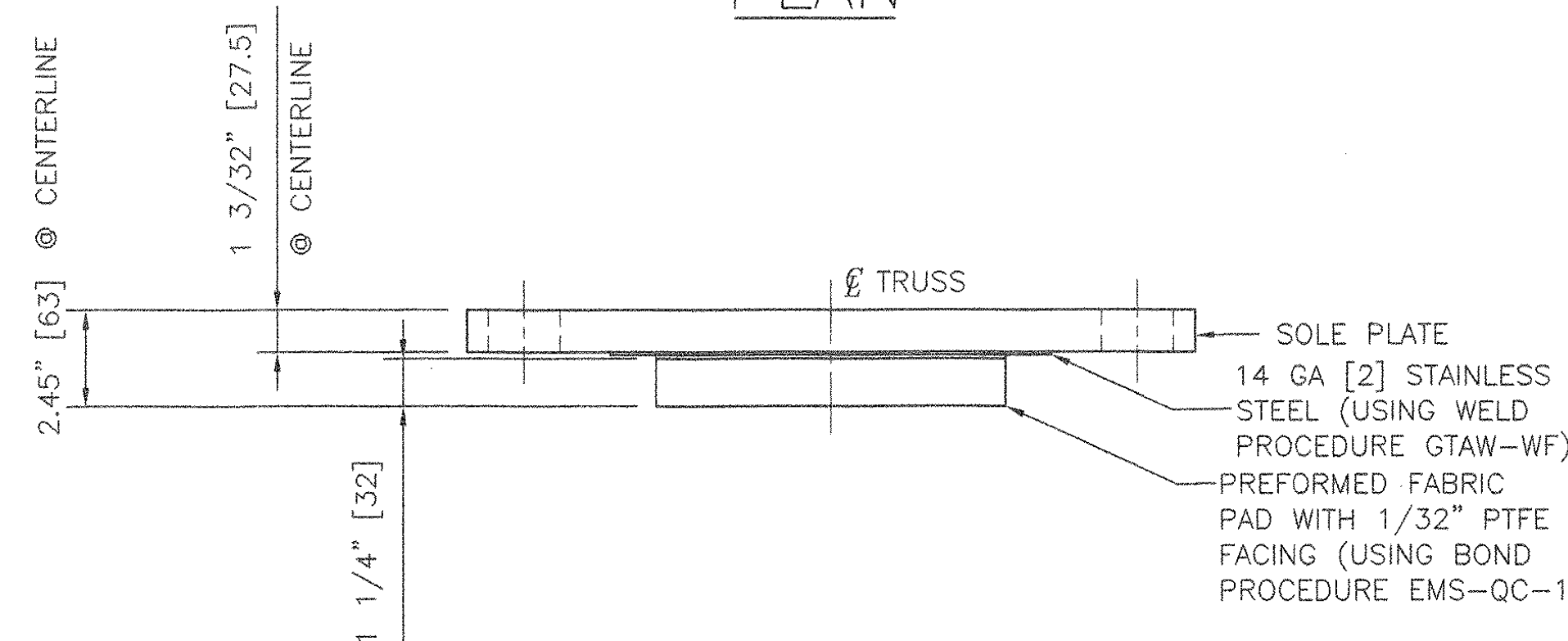
1. LOCATION OF FABRICATION - 70 SOUTH STREET WALPOLE, MA 02081
2. COSMEC, INC. REPRESENTATIVE: MR. MATT McANDREWS (508-668-6600)
3. UNITS= INCHES [MM]
4. ALL BEARING DEVICES SHALL BE ZINC METALIZED AS PER SUBSECTIONS 531.04(b) AND 506.15(c) OR (b). BEARINGS SHALL BE SEALED WITH AN APPROVED SEALER AS SPECIFIED IN STANDARD SPEC. SUBSECTION 506.15(b). AREAS OF METALIZING DAMAGED BY FIELD WELDING OR HANDLING SHALL BE PAINTED WITH AN APPROVED SEALANT, IN ACCORDANCE WITH SUPPLEMENTAL SPECIFICATION 513.06(f).  $\Delta$
5. MAXIMUM ALLOWABLE BEARING PRESSURE ON CONCRETE= 1000 PSI  
 MINIMUM ALLOWABLE DESIGN ROTATION= 0.015 RADIAN  
 HORIZONTAL CAPACITY SHALL BE A MINIMUM OF 10% VERTICAL LOAD  
 DESIGN LOAD PER BEARING: 258 kN [58.10 KIPS] TRUSS  
 80 kN [18.00 KIPS] STRINGER

6.  $\otimes$  MARKS HIGH END OF BEVELED



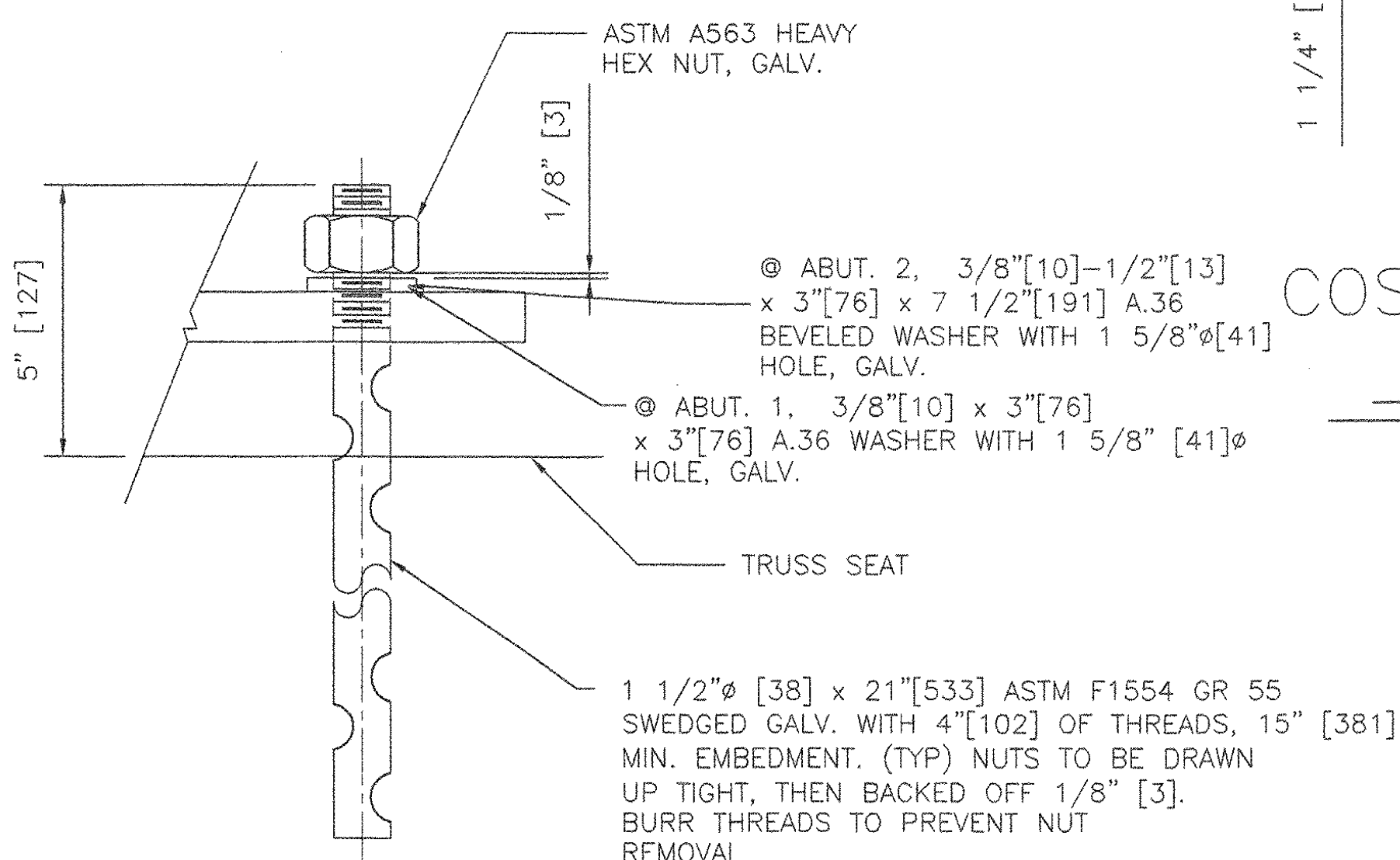
FRONT ELEVATION  
COSMEC FIXED PREFORMED  
FABRIC PAD BEARING

QTY.-2  
LOCATION- ABUT. 1



FRONT ELEVATION  
COSMEC EXPANSION PREFORMED  
FABRIC PAD BEARING

QTY.-2  
LOCATION- ABUT. 2



ANCHOR BOLT DETAIL

STRUCTURES  
COPY

RECEIVED  
 JUN 11 2007  
 BY *Opw* DATE 6/12/07

STATE OF VERMONT  
AGENCY OF TRANSPORTATION

TOWN OF BRADFORD  
ORANGE COUNTY  
PROJECT NO. STP 1447(28)  
ITEM 531.10  
BRIDGE NO.22

COSMEC, INC. 70 SOUTH STREET WALPOLE, MA 02081

SCALE: 1/4" = 1" DRAWN BY: MAE CHECKED BY: MRR  
 DATE: 2/13/07 DATE: 3/5/07

COSMEC BEARINGS

CUSTOMER: AUSTIN CONSTRUCTION, INC. S.O. NUMBER: 60712 DRAWING NUMBER: 5193 REV: 1

REV. REVISAS NOTED PER APPROVED AS NOTED DRAWINGS

BY: MM DATE: 4/07 CK'D BY: MCM DATE: 4/07