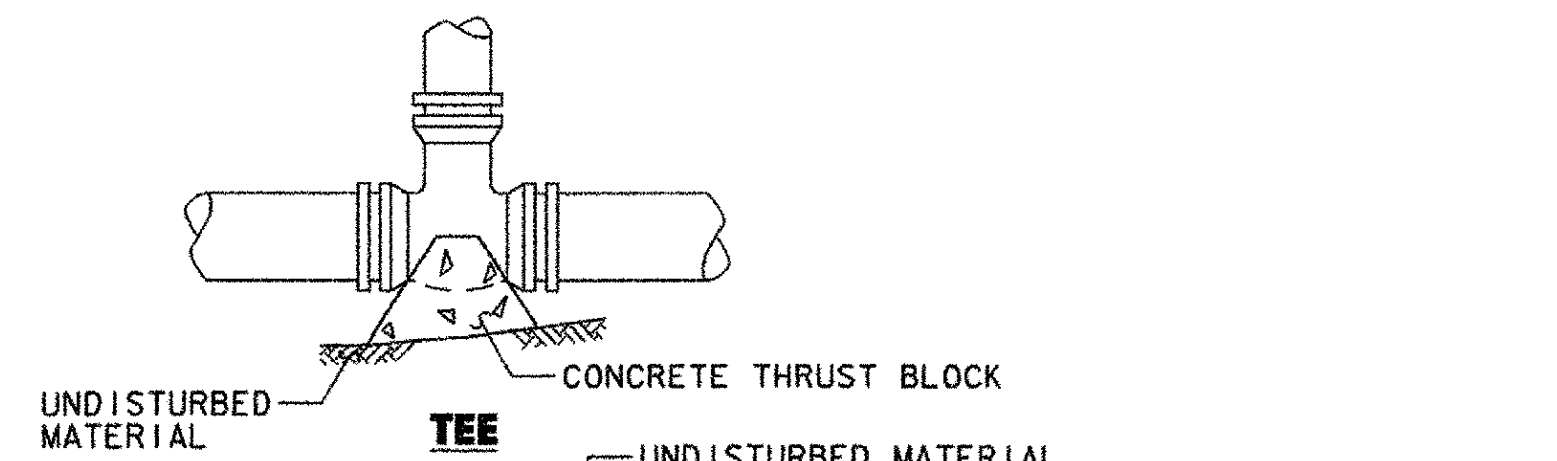
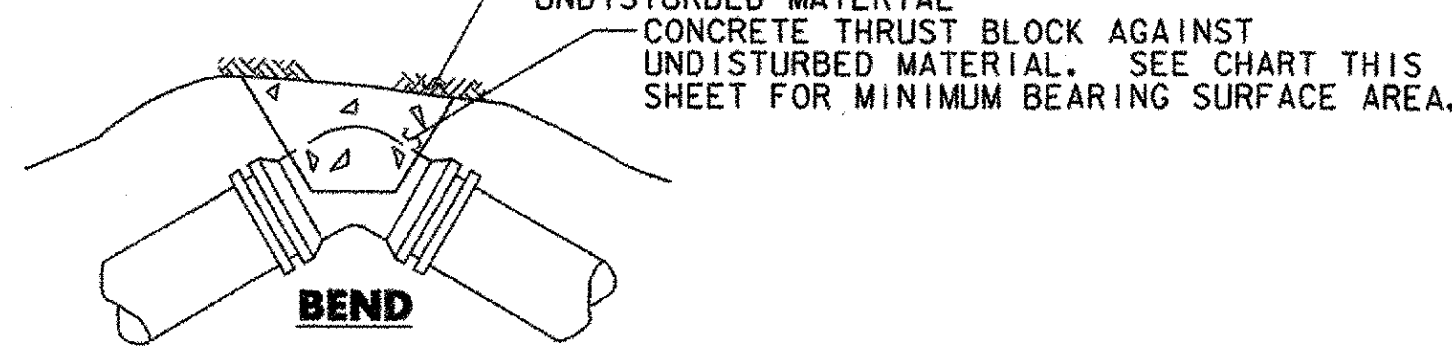


**DEAD END**



**TEE**



**BEND**

**CONCRETE THRUST BLOCK DETAILS**  
NOT TO SCALE

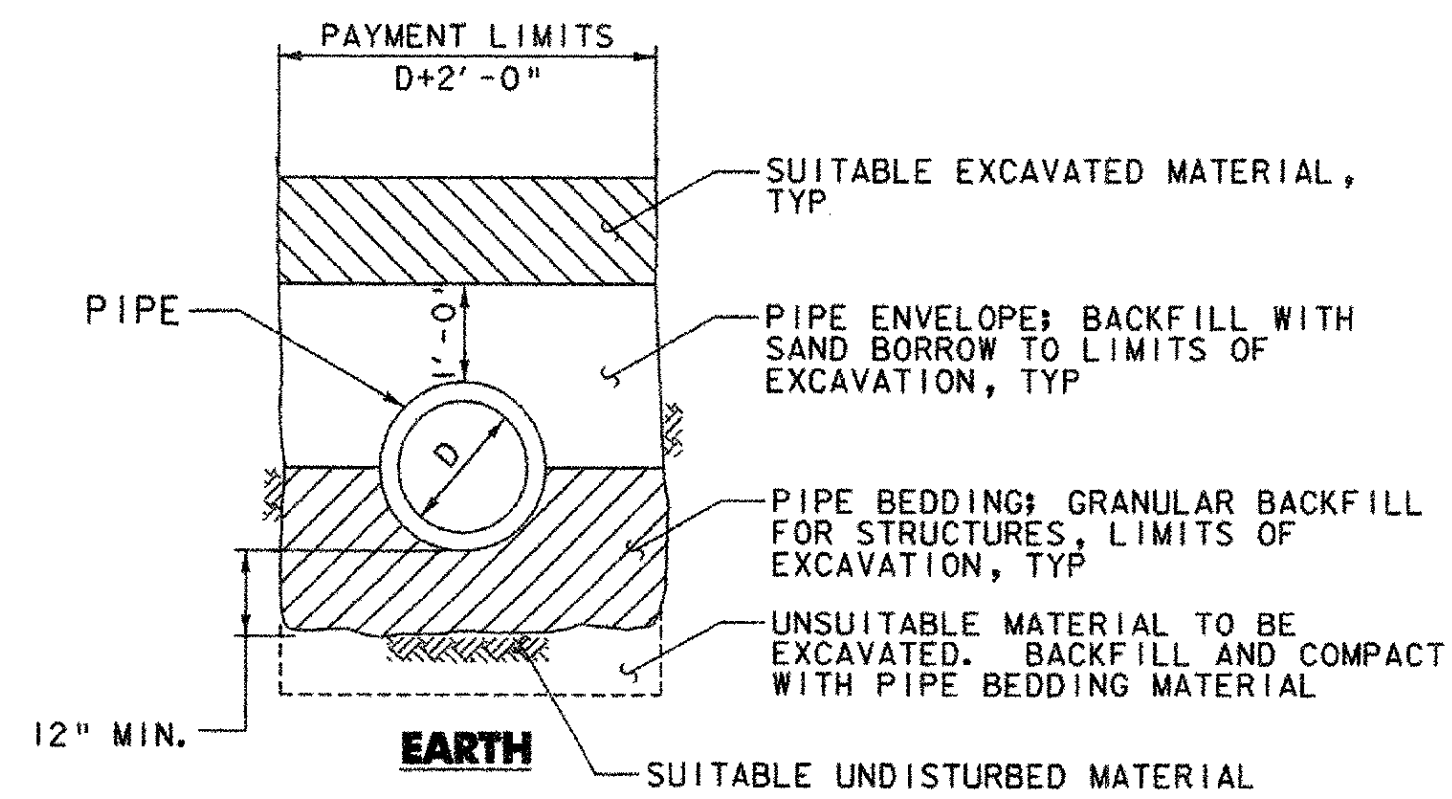
**AREA OF BEARING FACE OF CONCRETE THRUST BLOCKS IN SQUARE FEET**

PIPE SIZE (IN)	SOFT WET CLAY, SAND OR SILT	DRY SAND	COMPACT COARSE SAND OR GRAVEL HARDPAN
DEAD END OR TEE			
8 OR LESS	15	5	4
8 OR LESS	21	7	5
8 OR LESS	12	4	3
8 OR LESS	6	2	2
SOIL BEARING CAPACITIES (APPROXIMATE)			
	1250 lbs/ft <sup>2</sup>	4000 lbs/ft <sup>2</sup>	6000 lbs/ft <sup>2</sup>

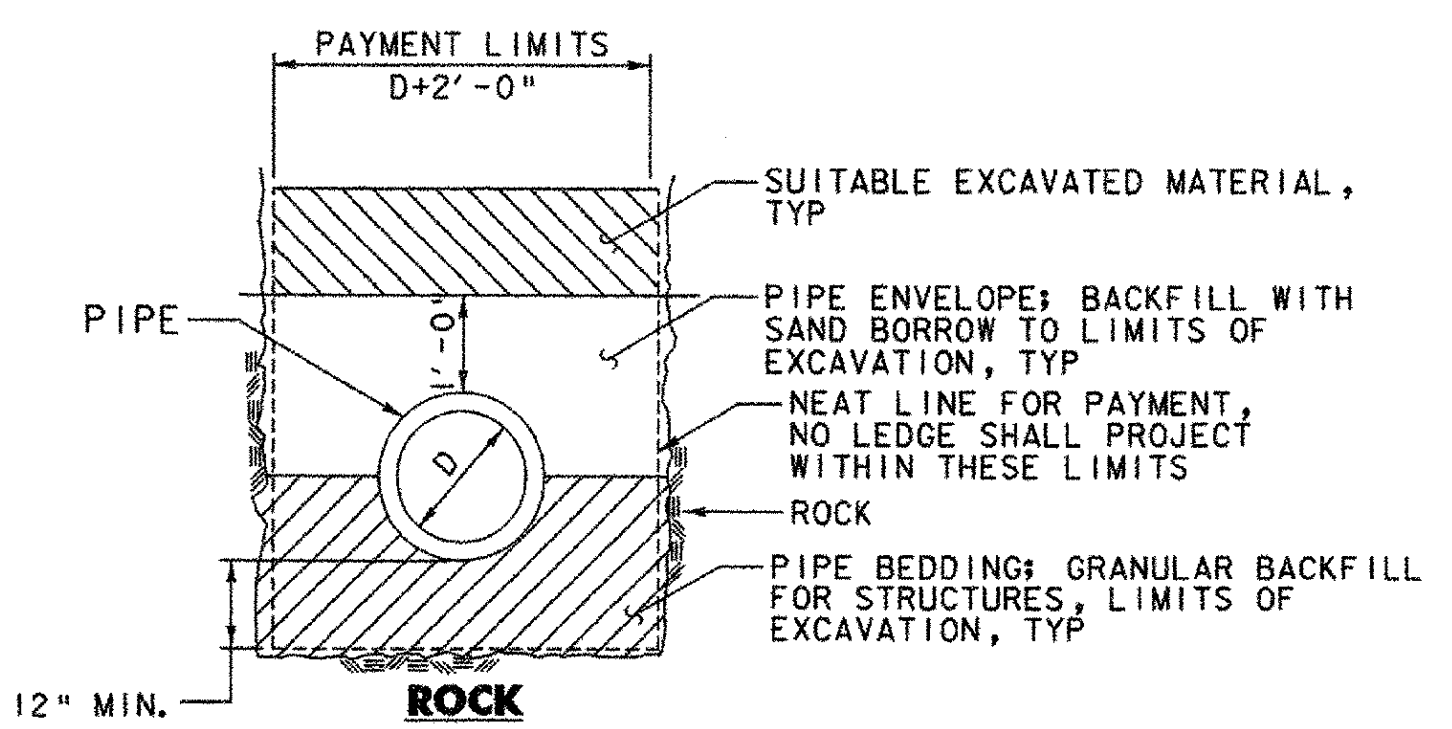
**THRUST BLOCK TABLE NOTES**

- PAYMENT FOR THRUST BLOCKS SHALL BE CONSIDERED INCIDENTAL TO ITEM 629.24, "DUCTILE IRON WATER MAIN, CEMENT LINED (8-INCH)."
- FIGURES BASED ON 300 PSI.
- FOR PIPE SIZES NOT LISTED USE NEXT LARGER PIPE SIZE.
- WHEN MORE THAN ONE SOIL TYPE IS ENCOUNTERED, THE ONE WITH LEAST BEARING CAPACITY SHALL BE USED.
- RETAINING RODS OR RESTRAINED JOINT PIPE, AS APPROVED BY THE ENGINEER, SHALL BE USED IN PLACE OF THRUST BLOCKS WHEN MUCK IS ENCOUNTERED.

**NOTE:**  
INFORMATION ON THIS SHEET FOR WATER MAIN AND DETAILS ONLY. REFER TO OTHER DRAWINGS FOR BRIDGE AND ROADWAY DETAILS.

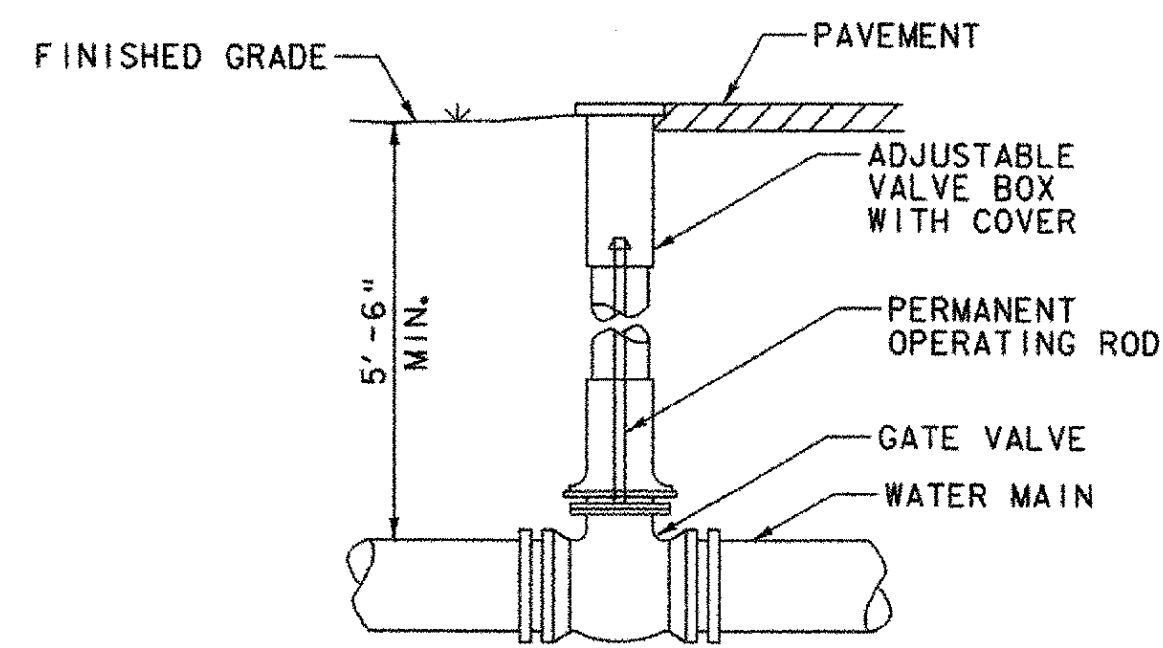


**EARTH**



**ROCK**

**TRENCH SECTIONS**  
NOT TO SCALE



NOTE: UNLESS OTHERWISE INDICATED ALL GATE VALVES SHALL HAVE PERMANENTLY INSTALLED OPERATING RODS TERMINATING AT LEAST 2'-0" AND NOT MORE THAN 3'-0" BELOW THE TOP OF THE VALVE BOX.

**BURIED GATE VALVE DETAIL**  
NOT TO SCALE

**STATE OF VERMONT**  
**AGENCY OF TRANSPORTATION**

Town Of	BRADFORD	Bridge No.	22
Highway No.	27	Log Sta.	
		Surv. Sta.	
<b>CREAMERY ROAD OVER WAITS RIVER</b>			

TOWN OF BRADFORD, VERMONT		DRAWN BY	DATE
CREAMERY ROAD BRIDGE REPLACEMENT		APG	OCT. 2006
DETAIL SHEET 2		CHECKED BY	PROJ. NO.
		CKG	219248L
		PROJ. ENG.	DRAW. NO.
		APG	---
		SHEET 33 OF 63	

**DuBois & King**  
INC.

engineering    planning    management    development

PLOTTED 11/01/2006

NO.	DATE	REVISIONS	BY	CHK'D

11/01/2006 01:22:06