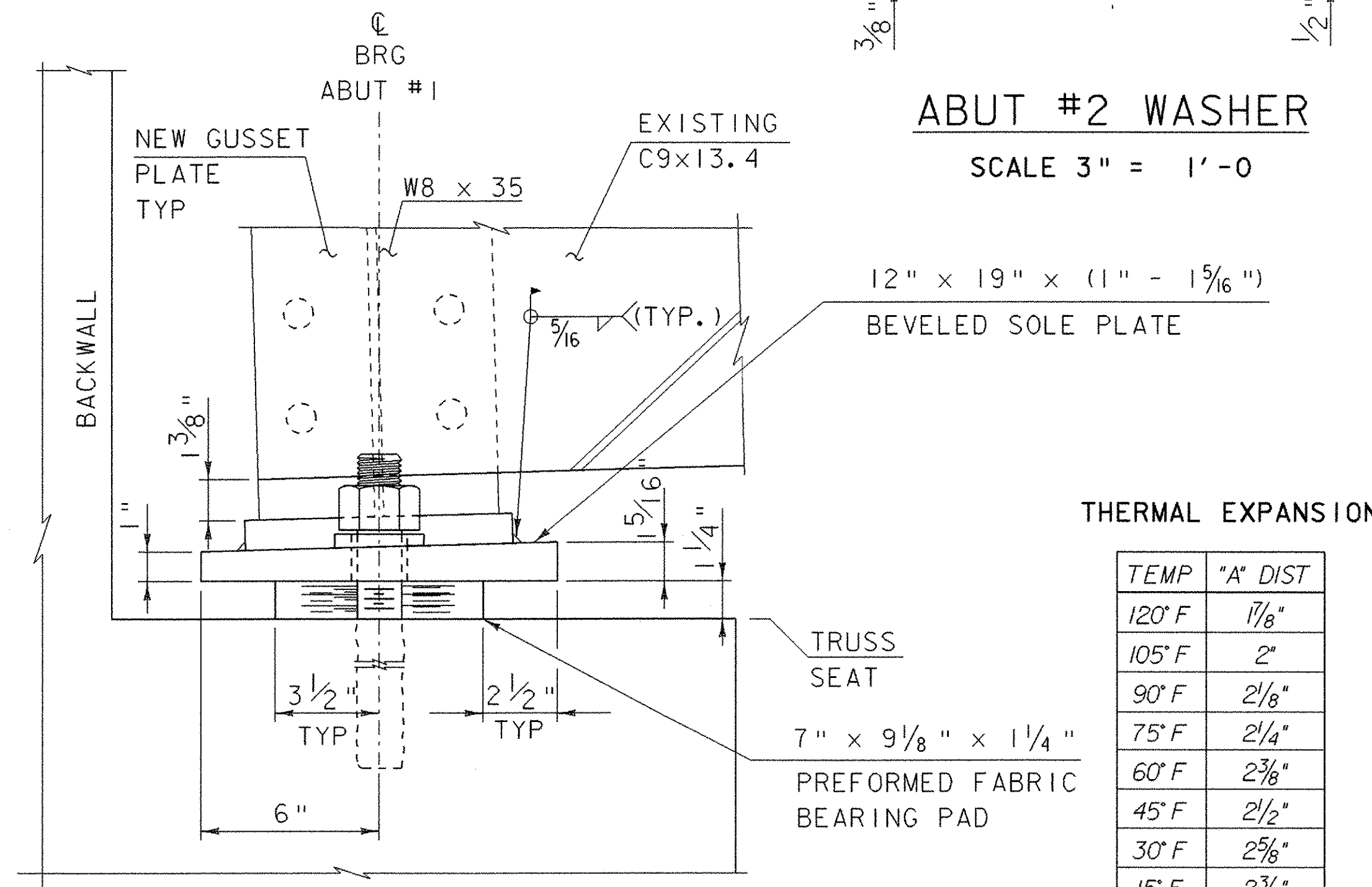


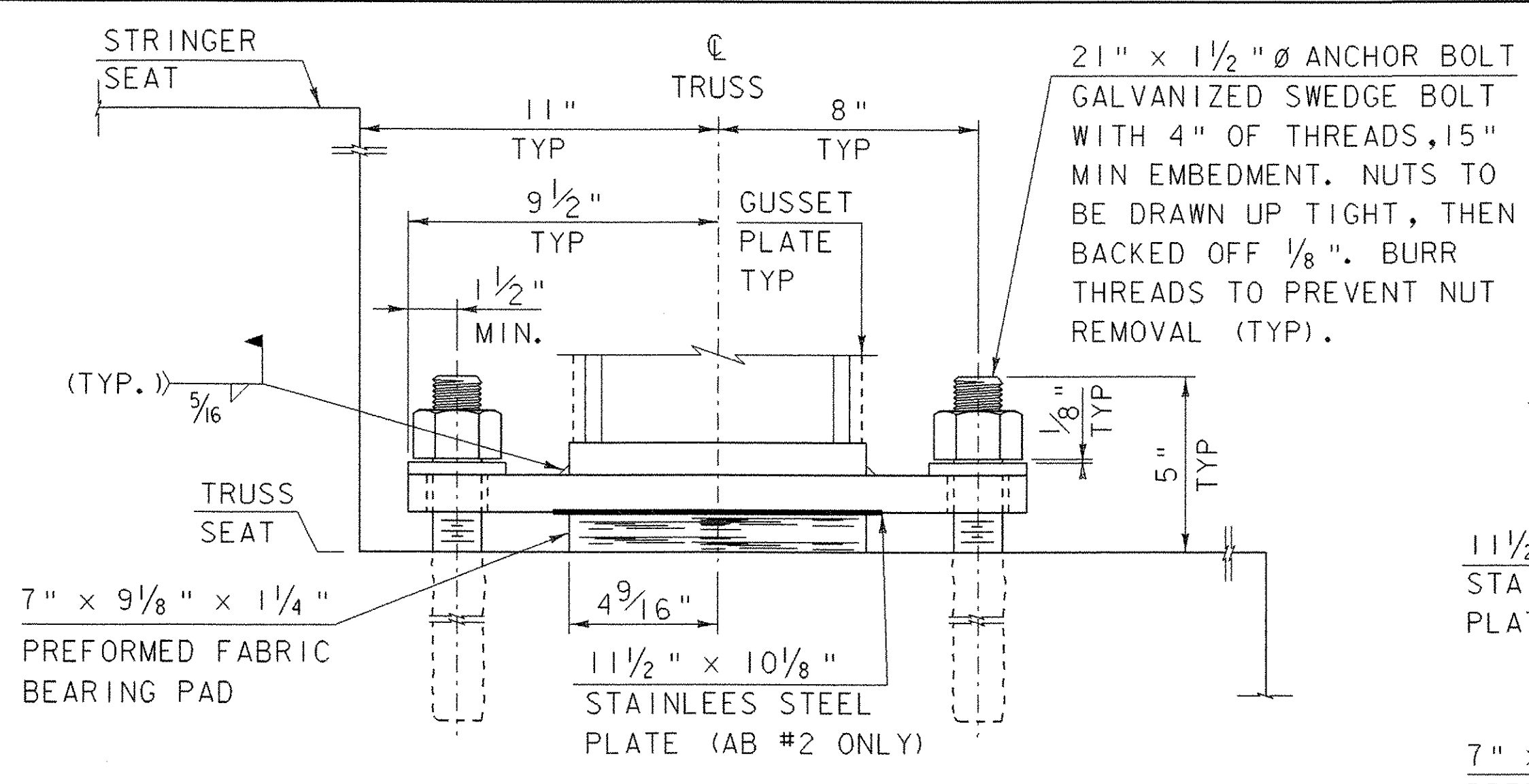
ABUT. #1 - PLAN VIEW
(FIXED BEARING)
SCALE 3" = 1'-0



ABUT. #1 - SIDE VIEW
(FIXED BEARING)
SCALE 3" = 1'-0

THERMAL EXPANSION

TEMP	"A" DIST
120°F	1 7/8"
105°F	2"
90°F	2 1/8"
75°F	2 1/4"
60°F	2 3/8"
45°F	2 1/2"
30°F	2 5/8"
15°F	2 3/4"
0°F	2 7/8"
-15°F	3"
-30°F	3 1/8"

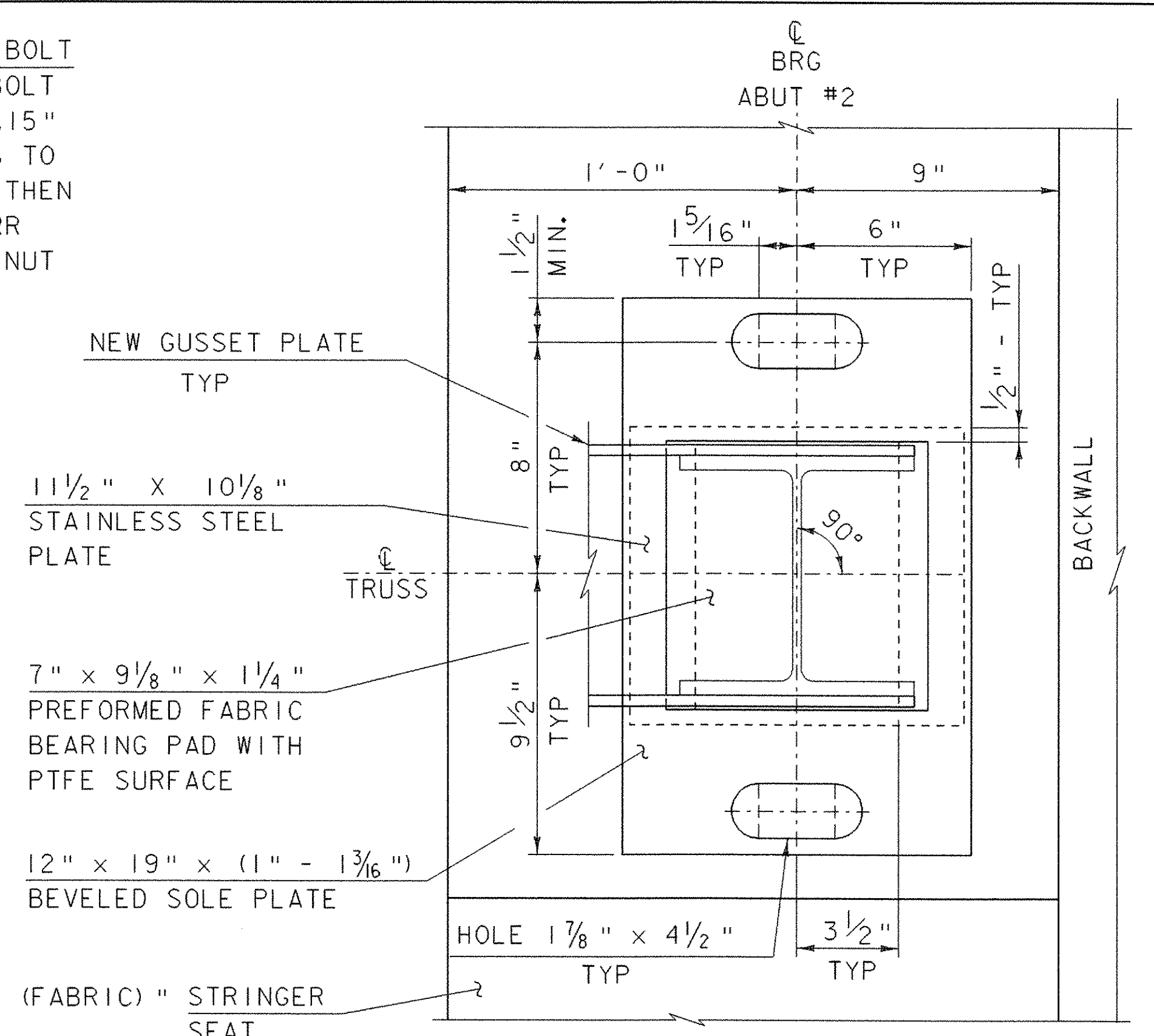


ABUT. #1 AND #2 - FRONT VIEW
SCALE 3" = 1'-0

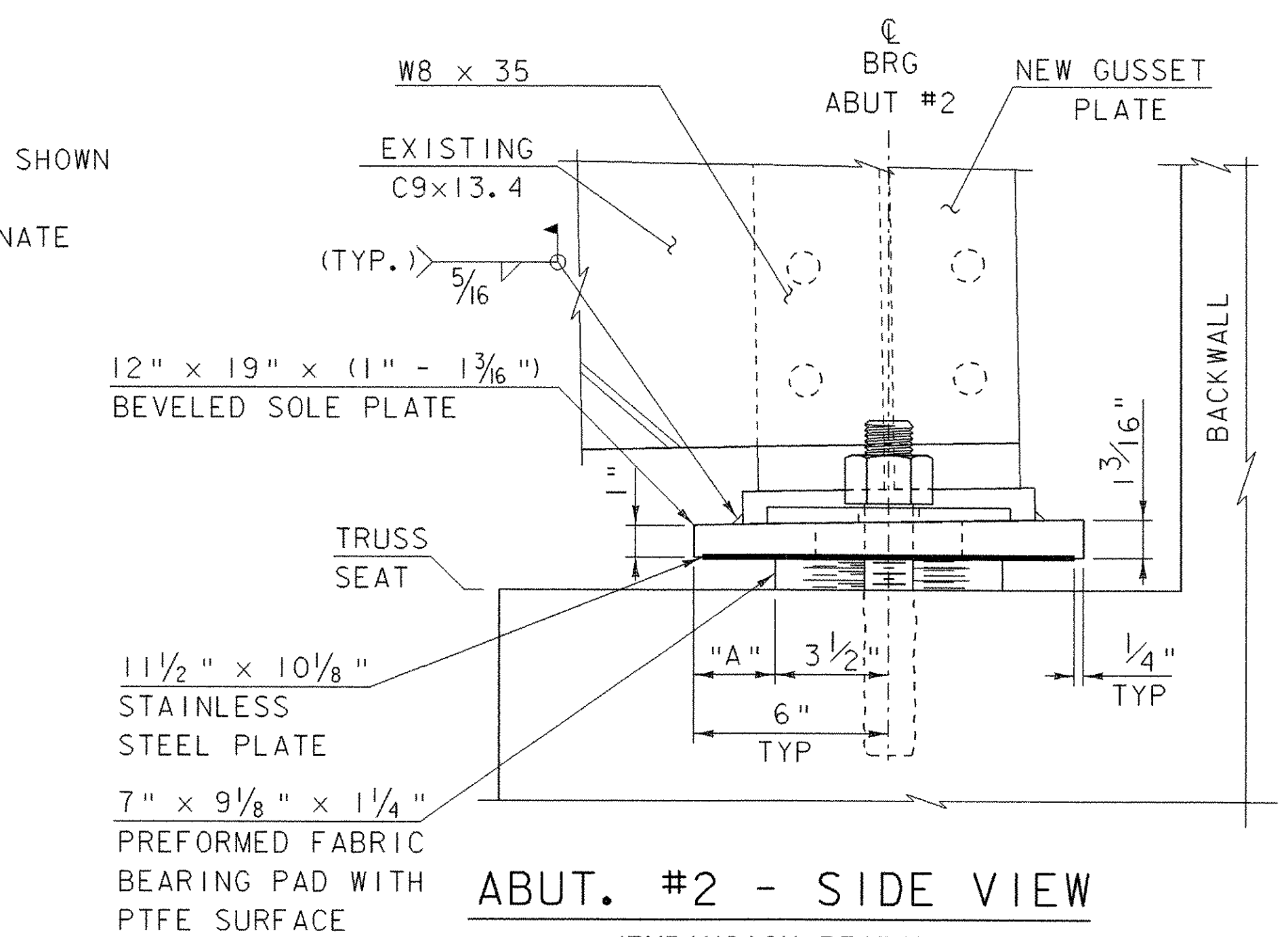
BEARING NOTES:

- BEARINGS SHALL BE PAID FOR UNDER THE ITEM 531.10 "BEARING DEVICE ASSEMBLY (FABRIC)" STRINGER SEAT AND SHALL CONFORM TO APPLICABLE SUBSECTIONS OF SECTIONS 531 AND 731.
- THE FIELD WELD CONNECTING THE BOTTOM FLANGE WITH THE BEARING DEVICE SHALL BE MADE WITH E7018 RODS. AREAS OF GALVANIZING OR METALIZING DAMAGED BY WELDING AND/OR HANDLING SHALL BE PAINTED WITH A ZINC RICH PAINT, IN ACCORDANCE WITH SECTION 513.
- ALTERNATE CONFIGURATION FOR BEARINGS MAY BE SUBMITTED FOR APPROVAL. ANY ALTERNATE SUBMITTED SHALL BE DESIGNED AND CERTIFIED TO MEET DESIGN LOADS AND CRITERIA SHOWN ON THIS SHEET, AND SHALL MAINTAIN THE ANCHORAGE SYSTEM SHOWN
- TRUSS AND STRINGER SEAT ELEVATIONS MAY BE REVISED TO ACCOMMODATE AN ALTERNATE CONFIGURATION.
- THE "A" DISTANCE IS THE SOLE PLATE ADJUSTMENT TO BE USED.
- DESIGN CRITERIA:
 - A. BASE PLATE TO CONCRETE DESIGN PRESSURE = 1000 PSI MAXIMUM.
 - B. MINIMUM DESIGN ROTATION = 0.015 RADIANS
 - C. HORIZONTAL CAPACITY SHALL BE A MINIMUM 10% OF VERTICAL LOAD
 - D. DESIGN LOAD PER BEARING:

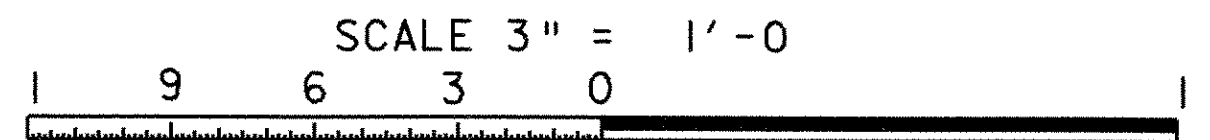
TRUSS	= 58.10 K
STRINGER	= 18.00 K
- TRUSS: DL = 22.40 K STRINGER: DL = 1.10 K
 LL + I = 35.70 K LL + I = 16.90
- SHOP DRAWINGS CONFORMING TO SUBSECTION 531.03 SHALL BE SUBMITTED AND INCLUDE ANY WELDING OR BONDING PROCEDURES.
- SOLE PLATES, ANCHOR BOLTS, NUTS AND WASHERS SHALL BE GALVANIZED OR METALIZED AS PER SUBSECTION 531.04 (b) AND 506.15. IF THE BEARINGS ARE METALIZED, THEY SHALL BE SEALED WITH AN APPROVED PRIMER AS SPECIFIED IN SUBSECTION 531.04 (b). ALL WASHERS SHALL BE 3/8" PLATE MINIMUM. PAYMENT FOR SOLE PLATES, ANCHOR BOLTS FOR BEARING PADS, NUTS AND WASHERS SHALL BE INCLUDED IN THE UNIT BID PRICE "BEARING DEVICE ASSEMBLY, FABRIC". ANCHOR BOLTS SHALL CONFORM TO SUBSECTION 714.08.
- ALL STEEL IN BEARING DEVICES (EXCEPT STAINLESS STEEL AND ANCHOR BOLTS) SHALL BE AASHTO M 270M/M 270 GRADE 36.



ABUT. #2 - PLAN VIEW
(EXPANSION BEARING)
SCALE 3" = 1'-0



ABUT. #2 - SIDE VIEW
(EXPANSION BEARING)
SCALE 3" = 1'-0



PROJECT NAME: BRADFORD
 PROJECT NUMBER: STP 1447(28)

FILE NAME: s96j286brg.dgn
 PROJECT LEADER: C.P.WILLIAMS
 DESIGNED BY: M.GAGULIC
 TRUSS BEARINGS

PLOT DATE: 22-NOV-2006
 DRAWN BY: D.D.BEARD
 CHECKED BY: R.S.YOUNG
 SHEET 18 OF 63