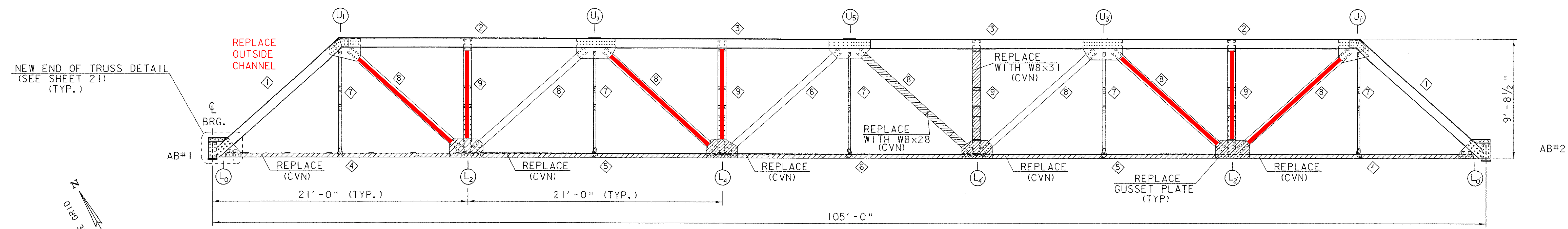
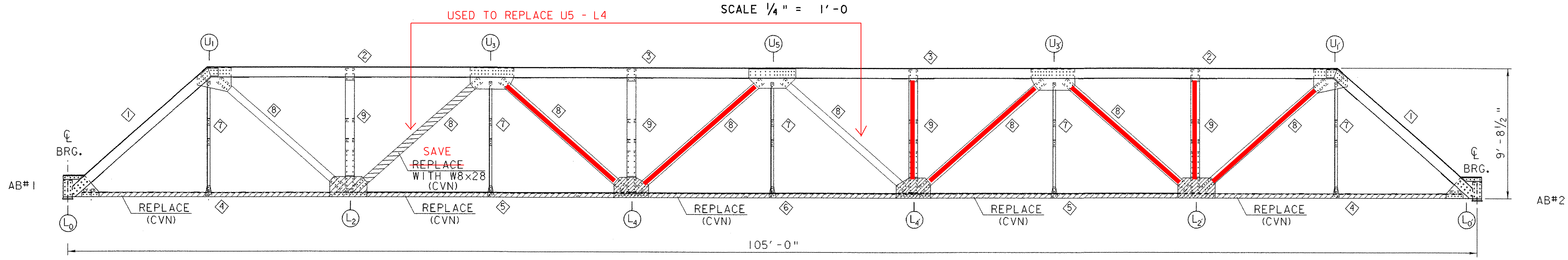


- REPLACE AS PER CO #1



NORTH TRUSS ELEVATION
LOOKING NORTH

SCALE 1/4" = 1'-0"



SOUTH TRUSS ELEVATION
LOOKING NORTH

SCALE 1/4" = 1'-0"

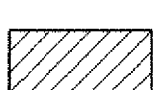


NOTE:

1. TRUSS REHABILITATION SHALL REQUIRE REPLACING TRUSS MEMBERS AS SHOWN ON THIS SHEET. THE ENTIRE BOTTOM CHORD, VERTICAL GUSSET PLATES, HORIZONTAL GUSSET PLATES AND COVER PLATES ATTACHED TO THE BOTTOM CHORD SHALL BE REPLACED IN KIND AS DETAILED IN REFERENCE SHEETS.
2. THE ANGLES USED TO ATTACH RESPACED STRINGERS TO THE FLOOR BEAMS SHALL BE REPLACED IN KIND AS DETAILED IN REFERENCE SHEETS.
3. PAYMENTS FOR NEW DIAGONAL TRUSS MEMBERS, VERTICAL TRUSS MEMBER, LATERAL BRACINGS, W8x35 (NEW END OF THE TRUSS) AND W6x25 (TRUSS RAIL POST) SHALL BE PAID FOR UNDER ITEM 506.50 "STRUCTURAL STEEL" (ROLLED BEAM). ALL OTHER STEEL SHALL BE PAID FOR UNDER ITEM 506.60 "STRUCTURAL STEEL".
4. NEW HOLES SHALL BE DRILLED IN THE NEW AND EXISTING LATERAL BRACING (Lb1, Lb2, AND Lb3) TO ACCOMMODATE NEW STRINGER SPACING. ALL WORK NECESSARY TO PROPERLY ATTACH LATERAL BRACING'S TO THE TRUSS SHALL BE INCLUDED UNDER ITEM 506.50 "STRUCTURAL STEEL" (ROLLED BEAM).
5. THE DESIRED CAMBER IN THE TRUSS WILL BE AS SHOWN IN REFERENCE SHEETS.

TRUSS MEMBER DESCRIPTIONS

TRUSS MEMBER NUMBER	TRUSS MEMBER	MEMBER DESCRIPTION
①	UPPER CHORD DIAGONAL	TWO (2) C 9 x 13.4 CHANNELS ONE (1) 14" x 1/4" COVER PLATE
②	UPPER CHORD MEMBER	TWO (2) C 9 x 13.4 CHANNELS ONE (1) 14" x 1/4" COVER PLATE
③	UPPER CHORD MEMBER	TWO (2) C 9 x 20 CHANNELS ONE (1) 14" x 5/16" COVER PLATE
④	LOWER CHORD MEMBER	TWO (2) L 4 x 3 x 3/8 ANGLES ONE (1) 8" x 3/8" COVER PLATE
⑤	LOWER CHORD MEMBER	TWO (2) L 4 x 3 x 3/8 ANGLES ONE (1) 8" x 3/8" COVER PLATE
⑥	LOWER CHORD MEMBER	TWO (2) L 4 x 3 x 3/8 ANGLES ONE (1) 8" x 3/8" COVER PLATE
⑦	VERTICAL WEB MEMBER	ONE (1) L 2 1/2 x 2 1/2 x 1/4 ANGLE
⑧	DIAGONAL WEB MEMBER	ONE (1) 8 CB 27 ROLLED I-BEAM
⑨	VERTICAL WEB MEMBER	ONE (1) 8 CB 31 ROLLED I-BEAM

LEGEND

-  TRUSS MEMBER TO BE REPLACED
-  TRUSS NODE
-  TRUSS MEMBER NUMBER

NOTE:
SOUTH TRUSS MEMBERS IDENTICAL TO NORTH TRUSS

PROJECT: BRADFORD	PROJECT NO.: STP 1447 (28)
DESIGN FILE NAME: 96j286/structures/s96j286truss.dgn	PLOT DATE: 22-NOV-2006
IPARM FILE NAME: s96j286truss.i	DESIGNED BY: M. GAGULIC
SQUAD LEADER: C. P. WILLIAMS	DRAWN BY: J. WHITE
TRUSS FLOOR & ELEVATION	CHECKED BY: R. S. YOUNG
	SHEET: 16 OF 63

