

**REMOVAL AND DISPOSAL OF GUARD RAIL**

STA 2+16.00 LT - 2+80.00 LT  
 STA 2+23.00 RT - 2+81.00 RT  
 STA 3+90.00 LT - 4+16.00 LT  
 STA 3+89.00 RT - 4+10.00 RT

**ANCHOR FOR STEEL BEAM RAIL**

STA 2+13.00 LT  
 STA 2+27.00 RT  
 STA 4+19.00 LT  
 STA 4+19.00 RT

**REMOVE WATERLINE PIPE**

STA 2+80.00 RT - STA 3+90.00 RT

**ERECTING SALVAGED SIGNS**

STA 2+04 LT  
 STA 2+22 RT  
 STA 2+42 RT  
 STA 3+89 RT  
 STA 5+17 LT

**NOTE:**  
 REFER TO SHEET 30 FOR  
 PLAN VIEW OF WATER LINE  
 DETAILS.

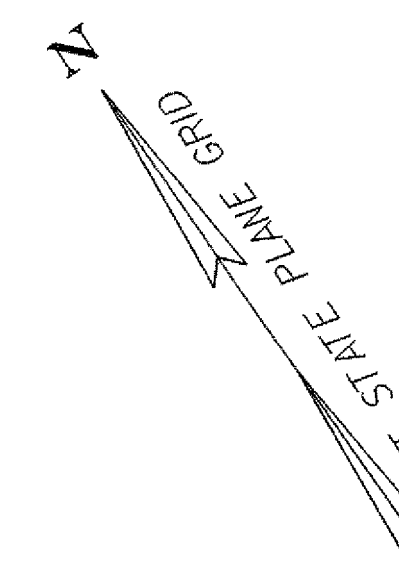
**HEAVY DUTY STEEL BEAM GUARD RAIL**

(GALVANIZED) (MOD. - 8' POST)  
 STA 2+06.00 LT - 2+81.00 LT  
 STA 2+20.00 RT - 2+81.00 RT  
 STA 3+90.00 LT - 4+26.00 LT  
 STA 3+90.00 RT - 4+26.00 RT

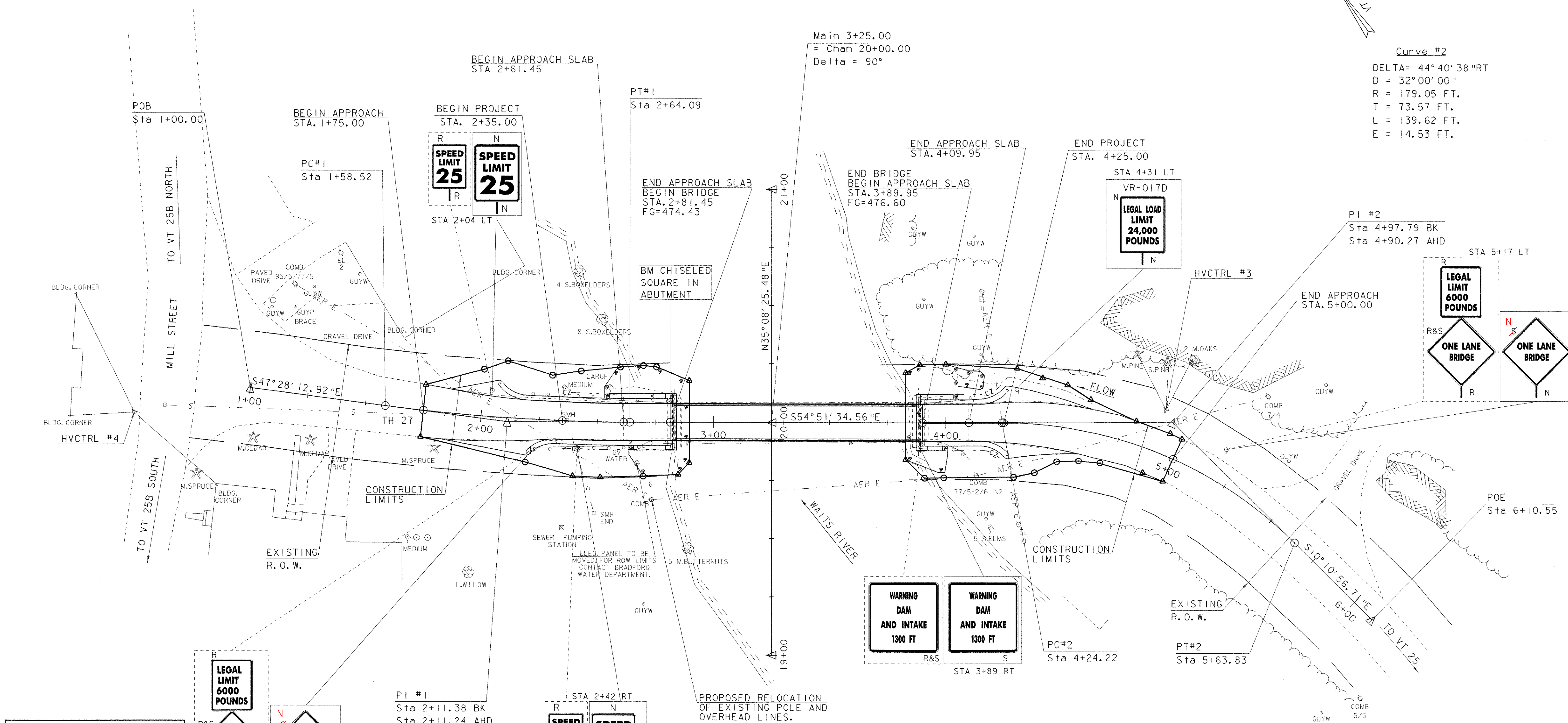
**REMOVING SIGNS**

STA 2+04 LT  
 STA 2+22 RT  
 STA 2+42 RT  
 STA 3+89 RT  
 STA 5+17 LT

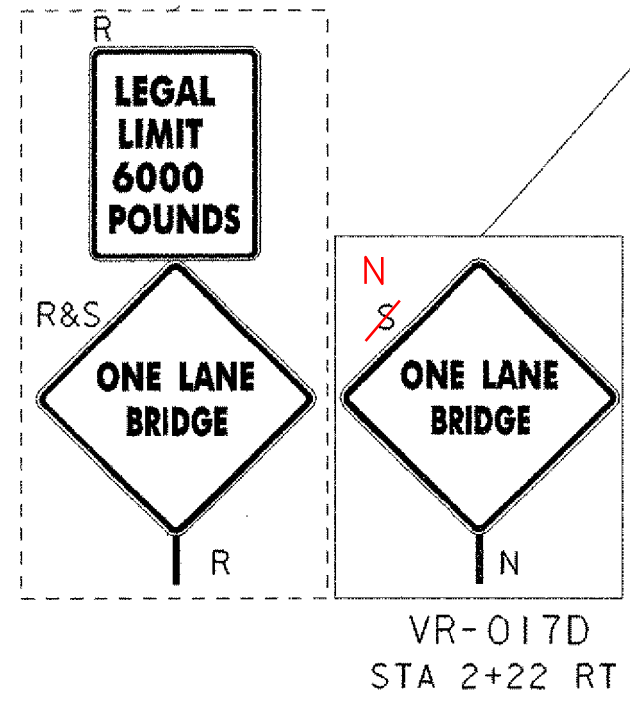
ONE LANE BRIDGE SIGNS REPLACED DUE TO IMPROPER REFLECTIVITY



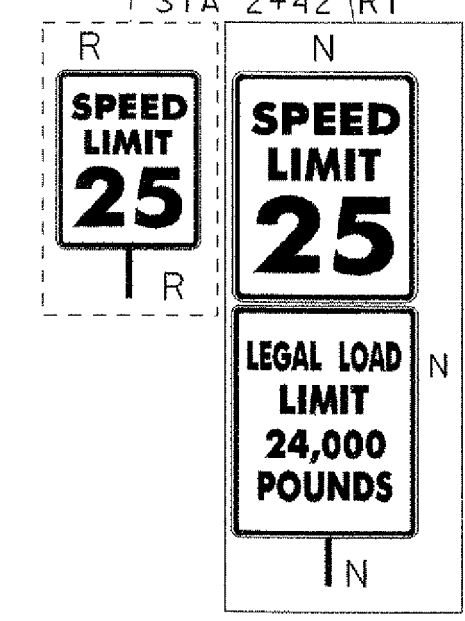
**Curve #2**  
 DELTA= 44°40'38"RT  
 D = 32°00'00"  
 R = 179.05 FT.  
 T = 73.57 FT.  
 L = 139.62 FT.  
 E = 14.53 FT.



LEGEND	
N	- NEW
R	- REMOVE
R&S	- REMOVE & SALVAGE
S	- ERECTING SALVAGED SIGNS
DATUM	
VERTICAL	NAVD 88
HORIZONTAL	NAD 83/96



**PI #1**  
 Sta 2+11.38 BK  
 Sta 2+11.24 AHD  
**Curve #1**  
 DELTA= 7°23'22"LT  
 D = 7°00'00"  
 R = 818.51 FT.  
 T = 52.85 FT.  
 L = 105.56 FT.  
 E = 1.70 FT.



**LAYOUT**  
 SCALE 1" = 20'-0"  
 20 0 20

**EXISTING BRIDGE DATA**  
 STEEL WARREN PONY TRUSS  
 105'-0" SINGLE SPAN  
 16'-0" ROADWAY  
 18'-8" OUTSIDE TO OUTSIDE OF TRUSS  
 ONE LANE OF TRAFFIC  
 BUILT IN 1934 BY THE  
 AMERICAN BRIDGE COMPANY

PROJECT: <b>BRADFORD</b>	PROJECT NO. #: <b>STP 1447 (28)</b>
DESIGN FILE NAME: 96j286/Structures/s96j286bdr.dgn	PLOT DATE: 22-NOV-2006
IPARM FILE NAME: s96j286lay.i	SURVEY DATE: 11/00
SURVEYED BY: R. GILMAN	DRAWN BY: M. FESSEL
SQUAD LEADER: C.P. WILLIAMS	SHEET: 8 OF 63
LAYOUT SHEET	