

GPS CONTROL POINTS

HVCTRL # 1

STANDARD DISK STAMPED

BRADFORD 189

N = 541211.490
E = 1738526.733
ELEV. = 487.180

DESCRIBED BY NATIONAL GEODETIC SURVEY 1992
THE STATION IS LOCATED ABOUT 8.85 KM (5.50 MI) NORTH-NORTHEAST OF FAIRLEE, 3.20 KM (2.00 MI) WEST OF PIERMONT NH, 1.3 KM (0.80 MI) SOUTH OF BRADFORD. OWNERSHIP--STATE OF VERMONT.
TO REACH FROM THE INTERSTATE HIGHWAY 91 NORTHBOUND BRIDGE OVER STATE ROUTE 25, GO EAST ALONG STATE ROUTE 25 FOR 0.15 MI (0.24 KM) TO A PARK AND RIDE LOT ON THE NORTH SIDE OF THE ROAD AND MARK SITE AT THE EAST END OF THE LOT.
STATION IS A PUNCH MARK ON THE TOP OF 5/8 INCH STAINLESS STEEL ROD UNDER ACCESS COVER, LOCATED 72 FT (21.9 M) NORTH OF THE CENTERLINE OF ROUTE 25, 32.5 FT (9.9 M) WEST OF THE EAST END OF A BOARD FENCE, 68.5 FT (20.9 M) EAST OF POLE NUMBER 5/14, 140 FT (42.7 M) NORTHEAST OF THE EAST END OF A TRAFFIC ISLAND, 1 FT (0.3 M) SOUTH OF A FIBERGLASS WITNESS POST IN THE EAST-WEST BOARD FENCE.

*TO ALLOW THE STATE PLANE COORDINATES TO FIT THE AGENCY DESIGN PLANE, SUBTRACT 500,000 FROM THE NORTING AND SUBTRACT 1,700,000 FROM THE EASTING.
* DESCRIPTION PROVIDED BY VERMONT AGENCY OF TRANSPORTATION GEODETIC SURVEY UNIT

HVCTRL # 2

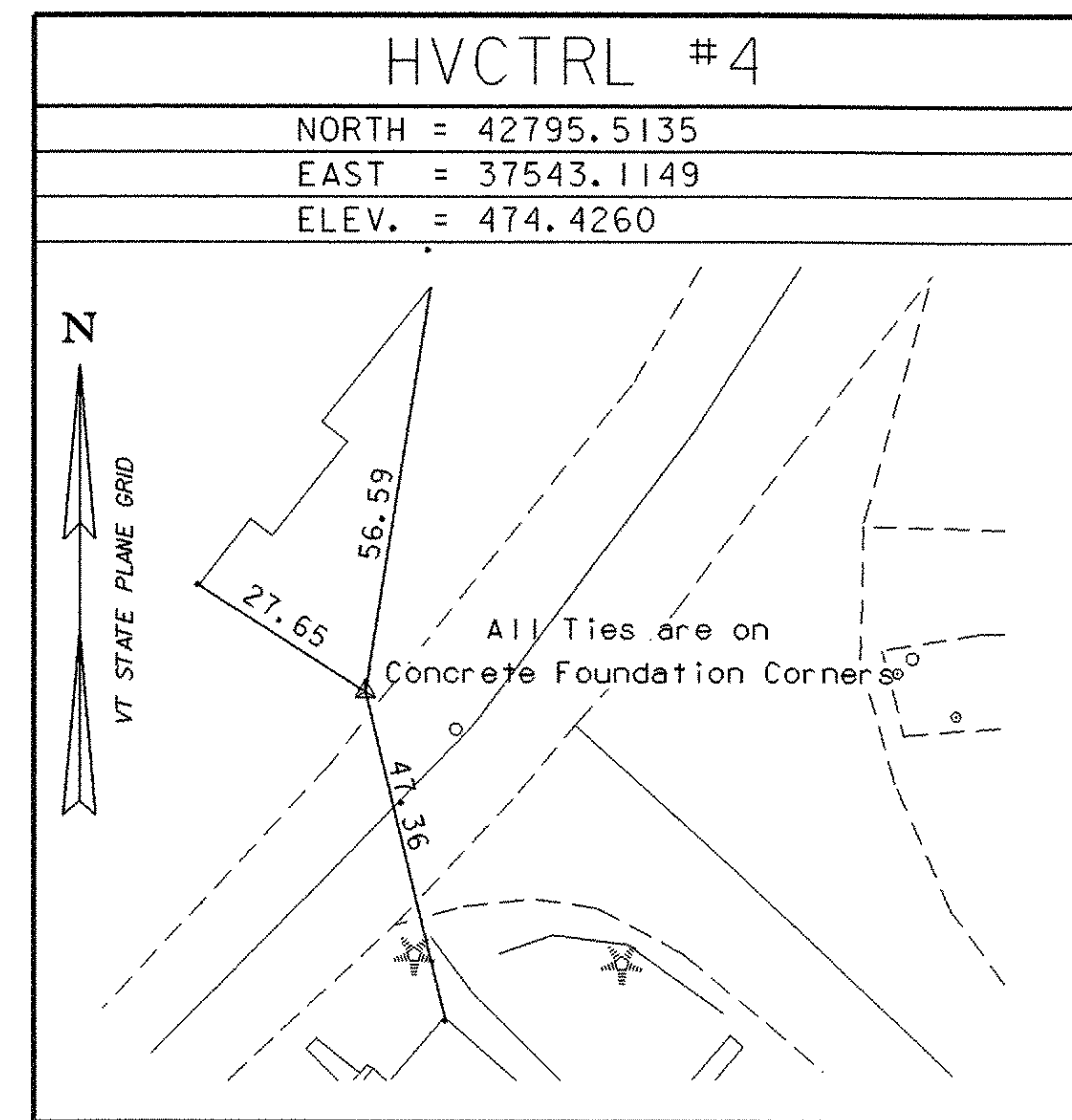
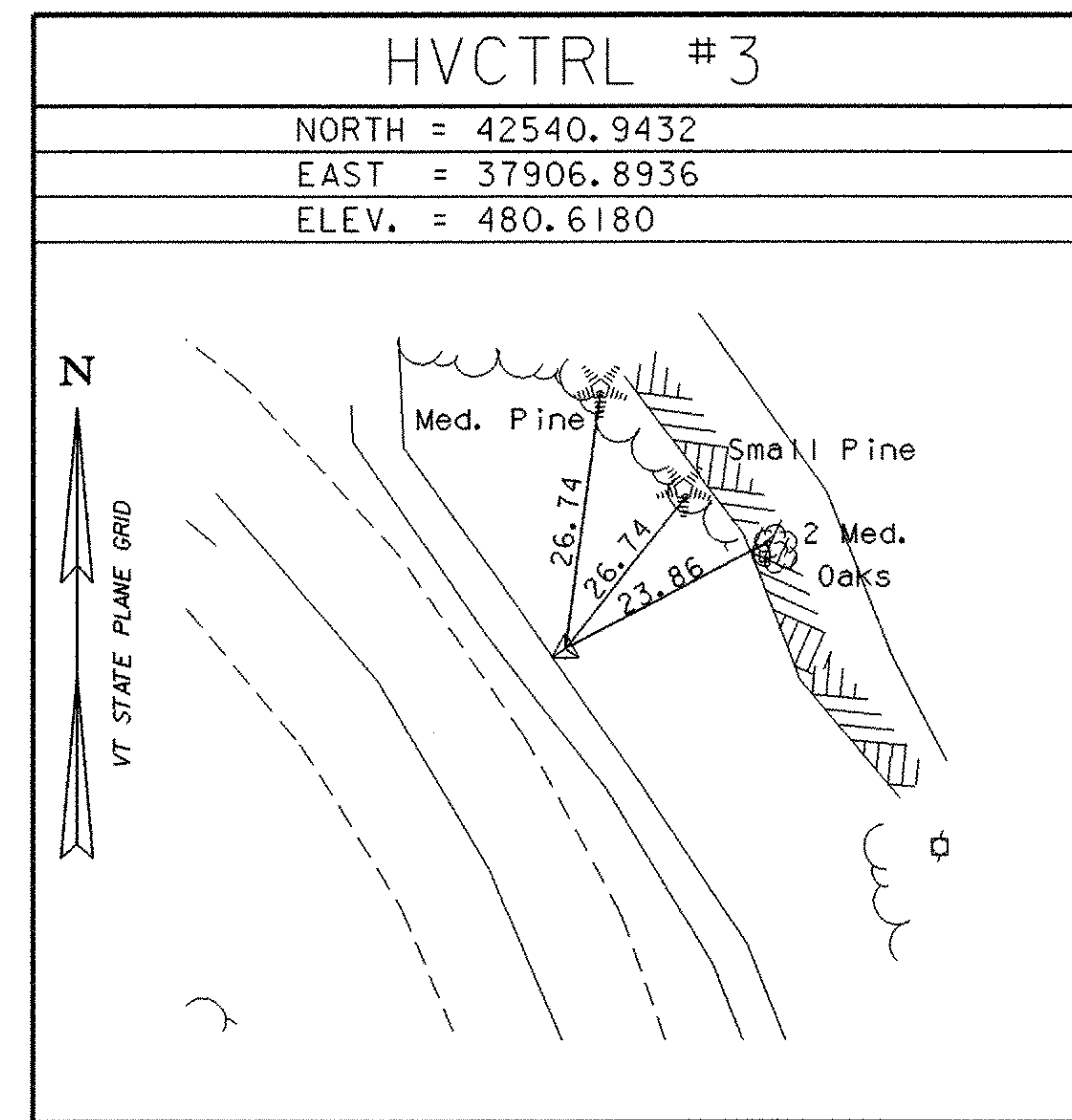
STANDARD DISK STAMPED

BRADFORD 189 AZ MK

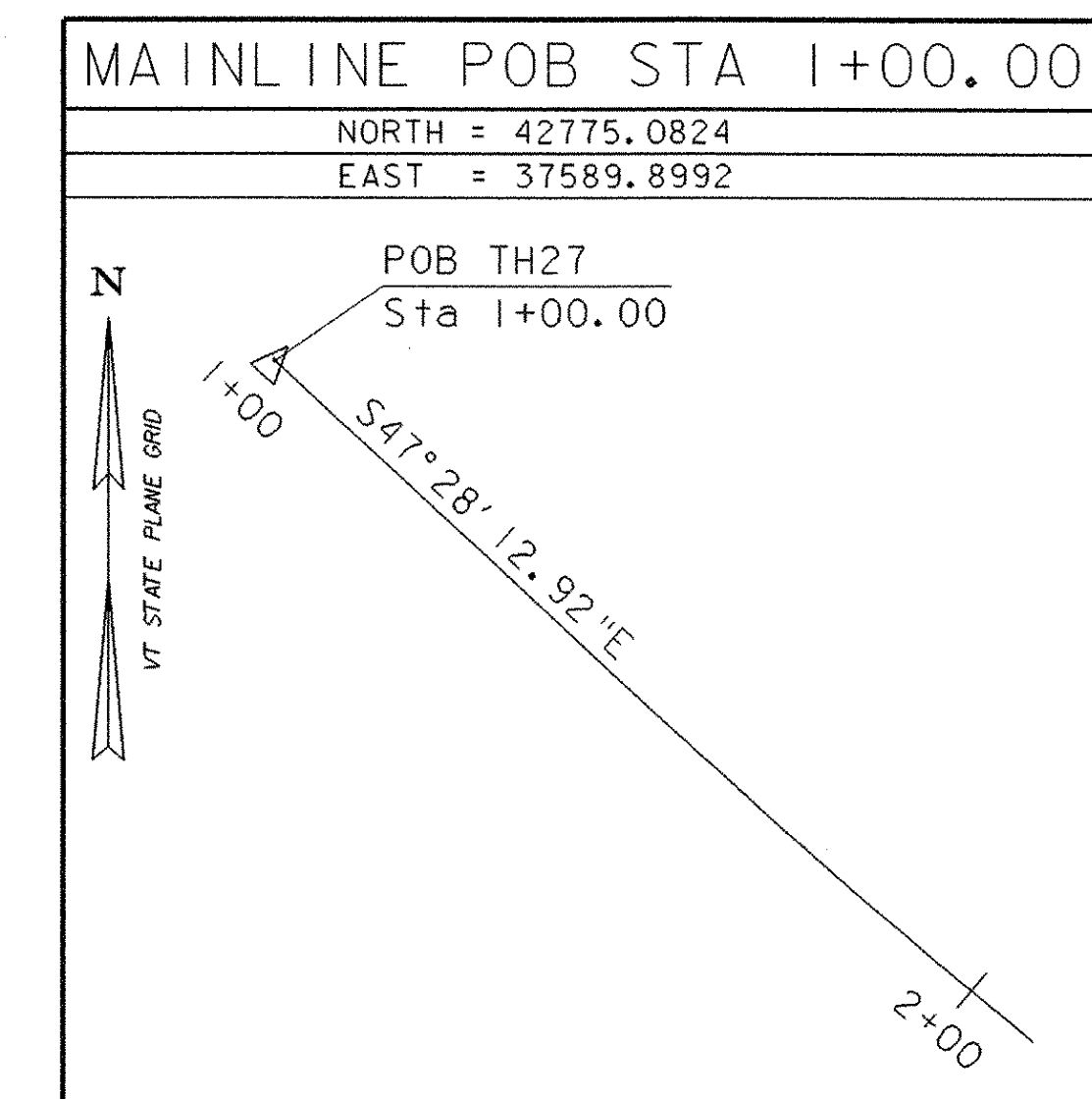
N = 541323.235
E = 1737142.365
ELEV. = 488.290

GENERAL LOCATION, BRADFORD, VT. THE MARK IS LOCATED AT THE NORTH END OF A GRASS TRIANGLE FORMED BY THE I-91 SOUTHBOUND LANE, VT ROUTE 25, AND THE I-91 SOUTHBOUND EXIT RAMP AT EXIT 16 IN BRADFORD. IT IS ABOUT 100 M (328.1 FT) NORTH OF THE NORTH END OF THE I-91 SOUTHBOUND BRIDGE OVER VT ROUTE 25. THE MARK IS SET FLUSH WITH GROUND SURFACE IN THE TOP OF A 30 CM DIAMETER CONCRETE MONUMENT ANCHORED TO ROCK 1 M (3.3 FT) DEEP. IT IS 2.3 M (7.5 FT) WEST OF AND ABOUT 0.2 M (0.7 FT) LOWER THAN THE WEST EDGE OF PAVEMENT OF THE I-91 SOUTHBOUND LANE, 40.2 M (131.9 FT) SOUTHWEST OF THE SOUTHWEST EDGE OF PAVEMENT OF THE I-91 SOUTHBOUND EXIT RAMP, 15.7 M (51.5 FT) SOUTHWEST OF A 40 CM CLUMP OF RED PINE, 14.3 M (46.9 FT) NORTHEAST OF A 15 CM HARDWOOD, 4.3 M (14.1 FT) NORTH OF THE NORTH END OF A STEEL BEAM GUARD RAIL, AND 0.3 M (1.0 FT) NORTH OF A FIBERGLASS WITNESS POST.

TRAVERSE TIES

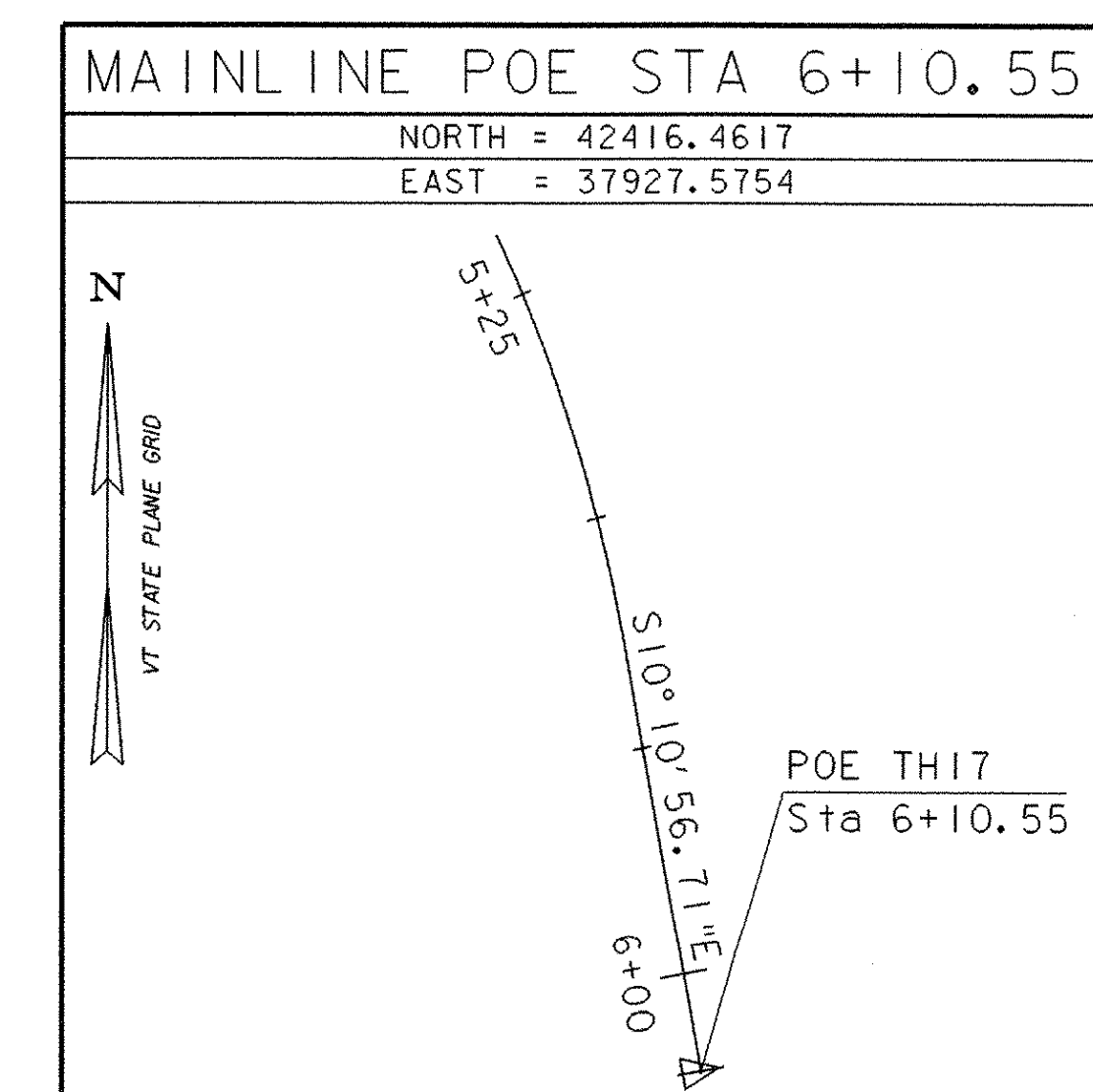
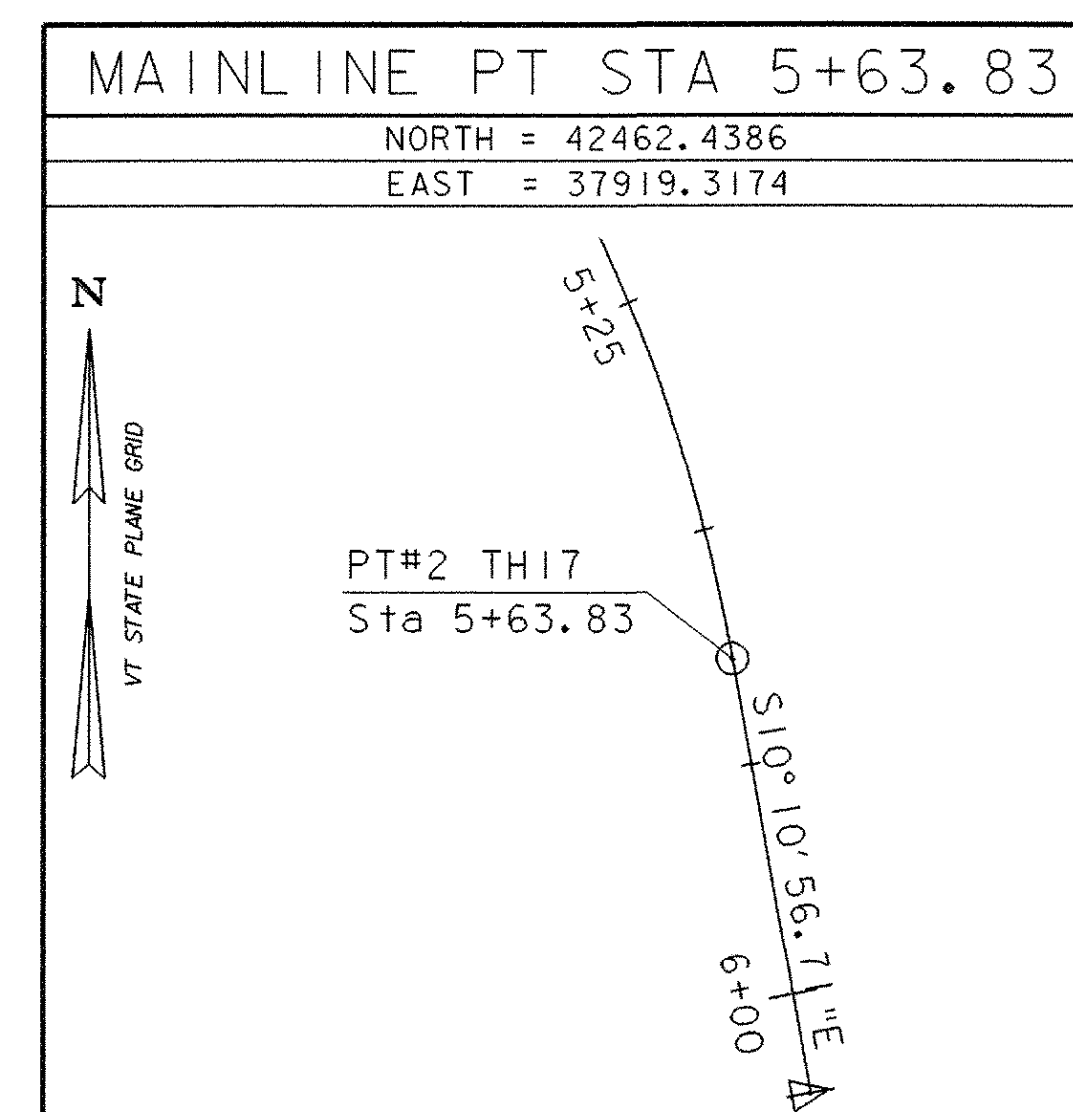
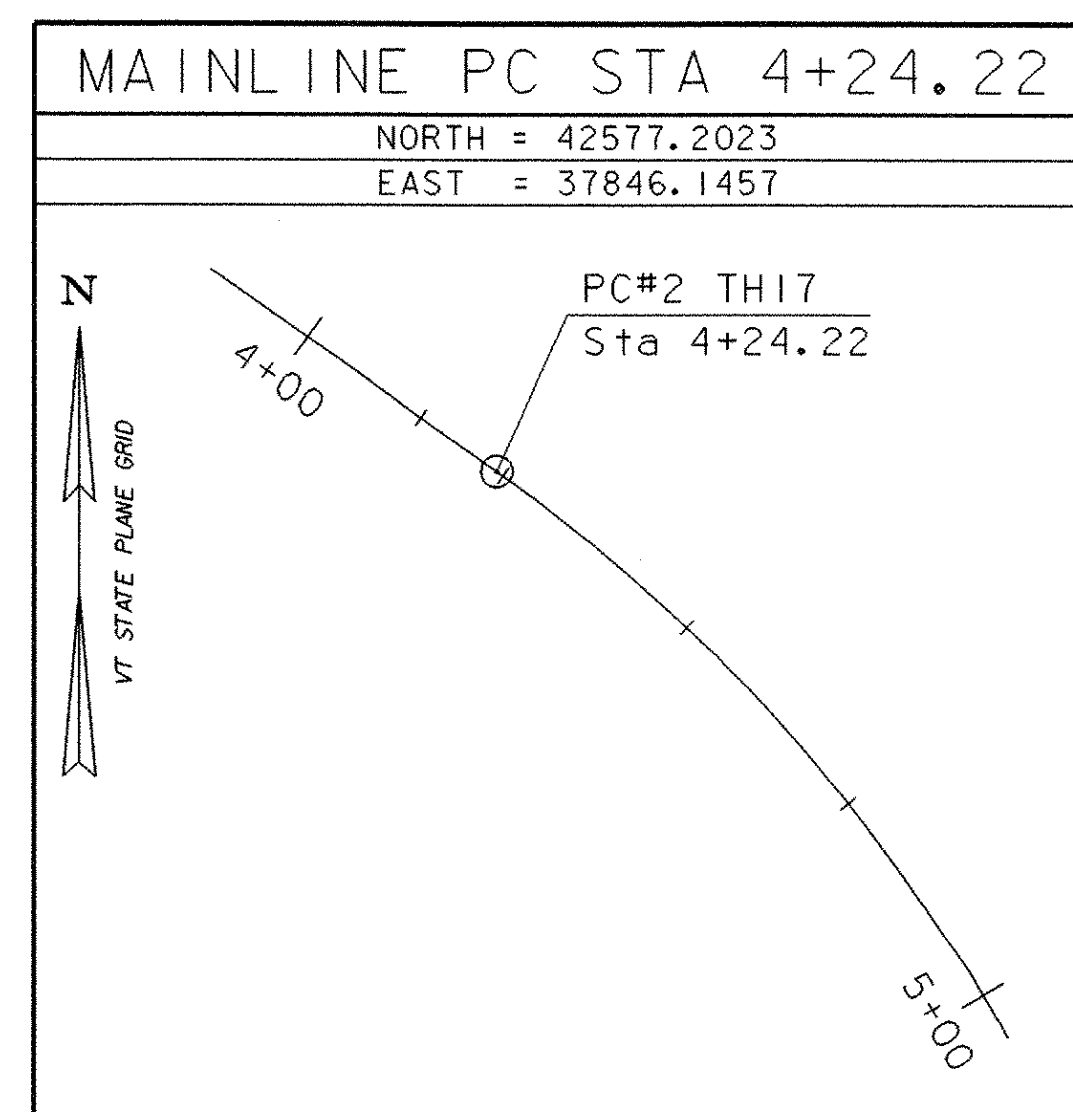
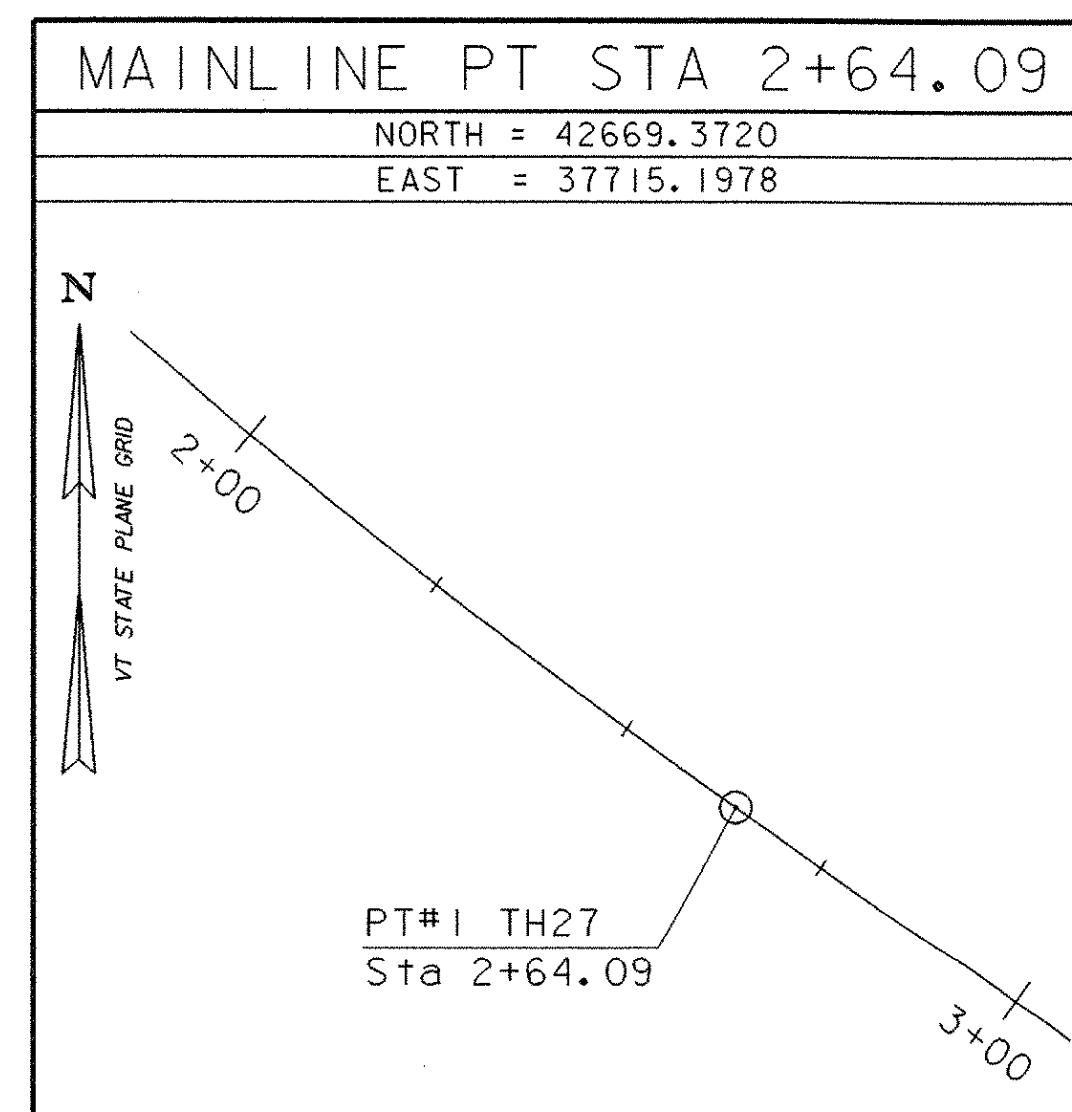
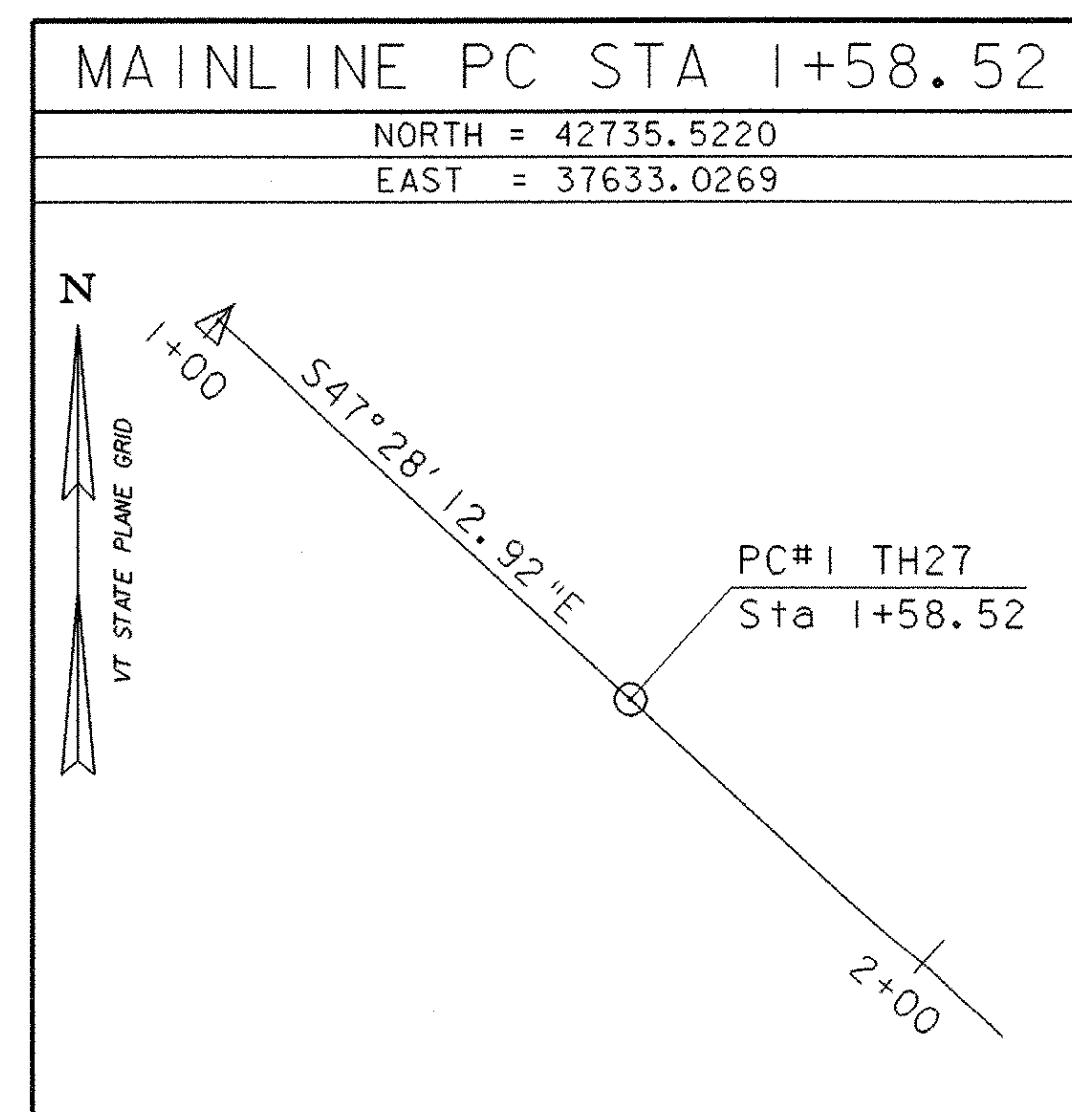


ALIGNMENT TIES



* MAIN TRAVERSE COMPLETED November 28, 2000 By R. Gilman and R. Bullock

ALIGNMENT TIES
(CONT.)



DATUM

VERTICAL	NAVD 88
HORIZONTAL	NAD 83/96
ADJUSTMENT	COMPASS

* ALIGNMENT STAKED

PROJECT NAME: BRADFORD
PROJECT NUMBER: STP 1447 (28)

FILE NAME: 96j286/Str/s96j286tie.dgn PLOT DATE: 22-NOV-2006
PROJECT MANAGER: C.P.WILLIAMS DRAWN BY: M.FESSEL
DESIGNED BY: M.GAGULIC CHECKED BY: R.S.YOUNG
GPS CONTROL AND TRAVERSE TIES SHEET 7 OF 63