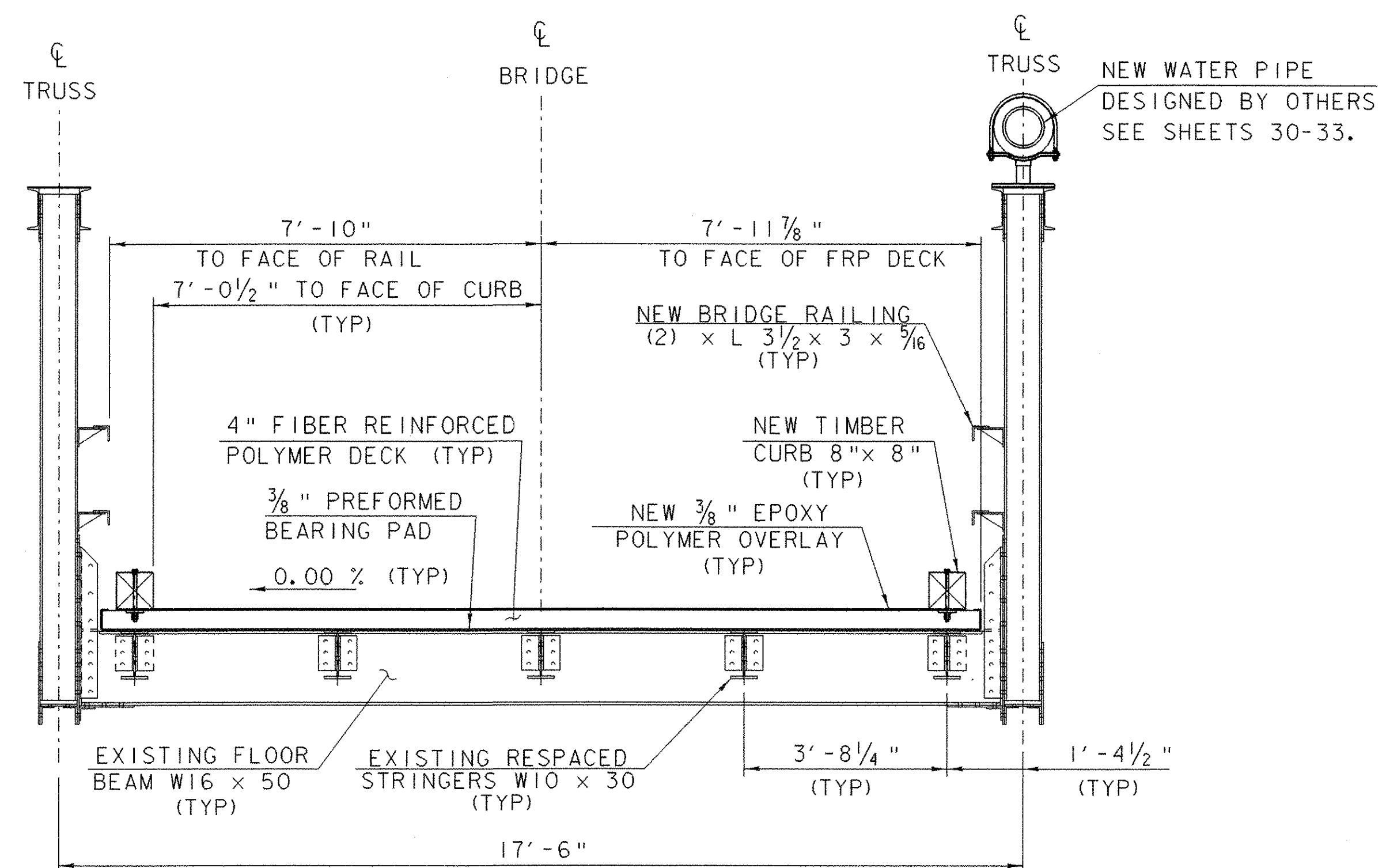


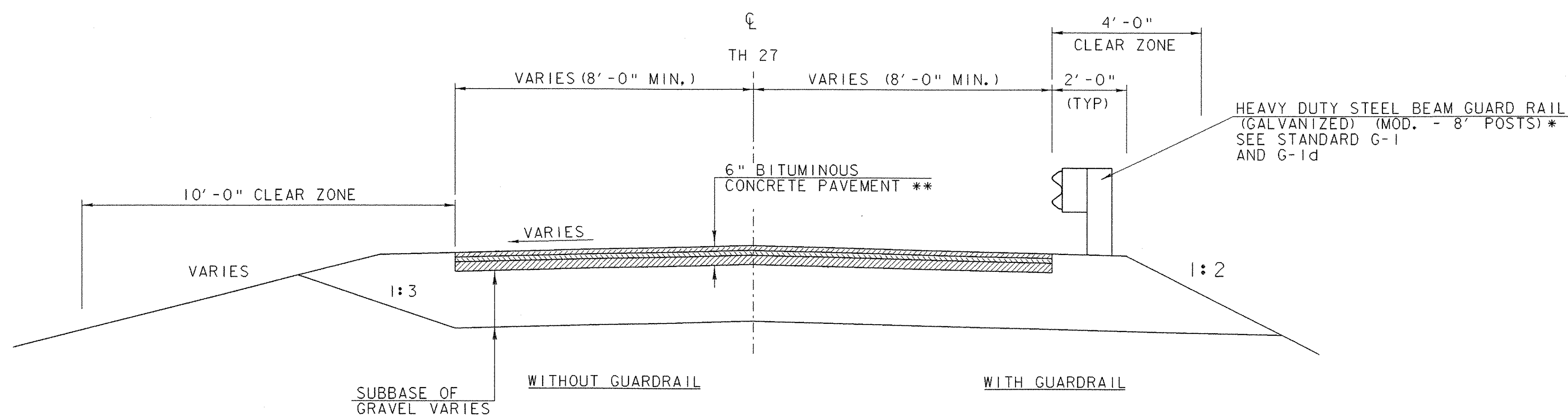
EXISTING TYPICAL BRIDGE SECTION

SCALE 1/2" = 1'-0



PROPOSED TYPICAL BRIDGE SECTION

SCALE 1/2" = 1'-0



TH 27 TYPICAL ROADWAY SECTION

SCALE 1/2" = 1'-0

- \* POST SHALL BE 8' LONG AND DRIVEN 1 FOOT DEEPER TO PROVIDE SAME STIFFNESS AS POST WITH 3 FOOT SHOULDER.
- \*\* 1 1/2" TYPE III OR IV OVER  
1 1/2" TYPE III OR IV OVER  
3" TYPE I OR II

SCALE 1/2" = 1'-0



PROJECT: BRADFORD	PROJECT NO.: STP 1447 (28)
DESIGN FILE NAME: 96j286/structures/s96j286typ.dgn	PLOT DATE: 22-NOV-2006
IPARM FILE NAME: s96j286typ.i	DRAWN BY: J. WHITE
DESIGNED BY: M. GAGULIC	CHECKED BY: R. S. YOUNG
SQUAD LEADER: C. P. WILLIAMS	SHEET: 5 OF 63
TYPICAL SECTIONS #1	