

INSTALL STREET LIGHTING (RA40-16)

STA. 1+105.0, 6.6 LT. & RT. SL-1 & SL-2
 STA. 1+135, 6.6 LT. & RT. SL-3 & SL-4

ADJUST ELEVATION OF VALVE BOX

STA. 1+074.0, LT.
 STA. 1+087.0, LT.
 STA. 1+088.0, LT.
 STA. 1+092.0, RT.
 STA. 1+098.0, LT.
 STA. 1+140.3, RT.
 STA. U 10+009.0, LT.
 STA. R 5+033.0, RT.

SLEEVES FOR UTILITIES

STA. 1+104.6 LT. TO RT.
 STA. 1+134.7 LT. TO RT.

DIRECT BURIAL CABLE

STA. 1+068.0 TO 1+153.0, LT. (EST.)
 STA. 1+095.0 TO 1+147.0, RT. (EST.)

CHANGE ELEVATION OF SEWER MANHOLE

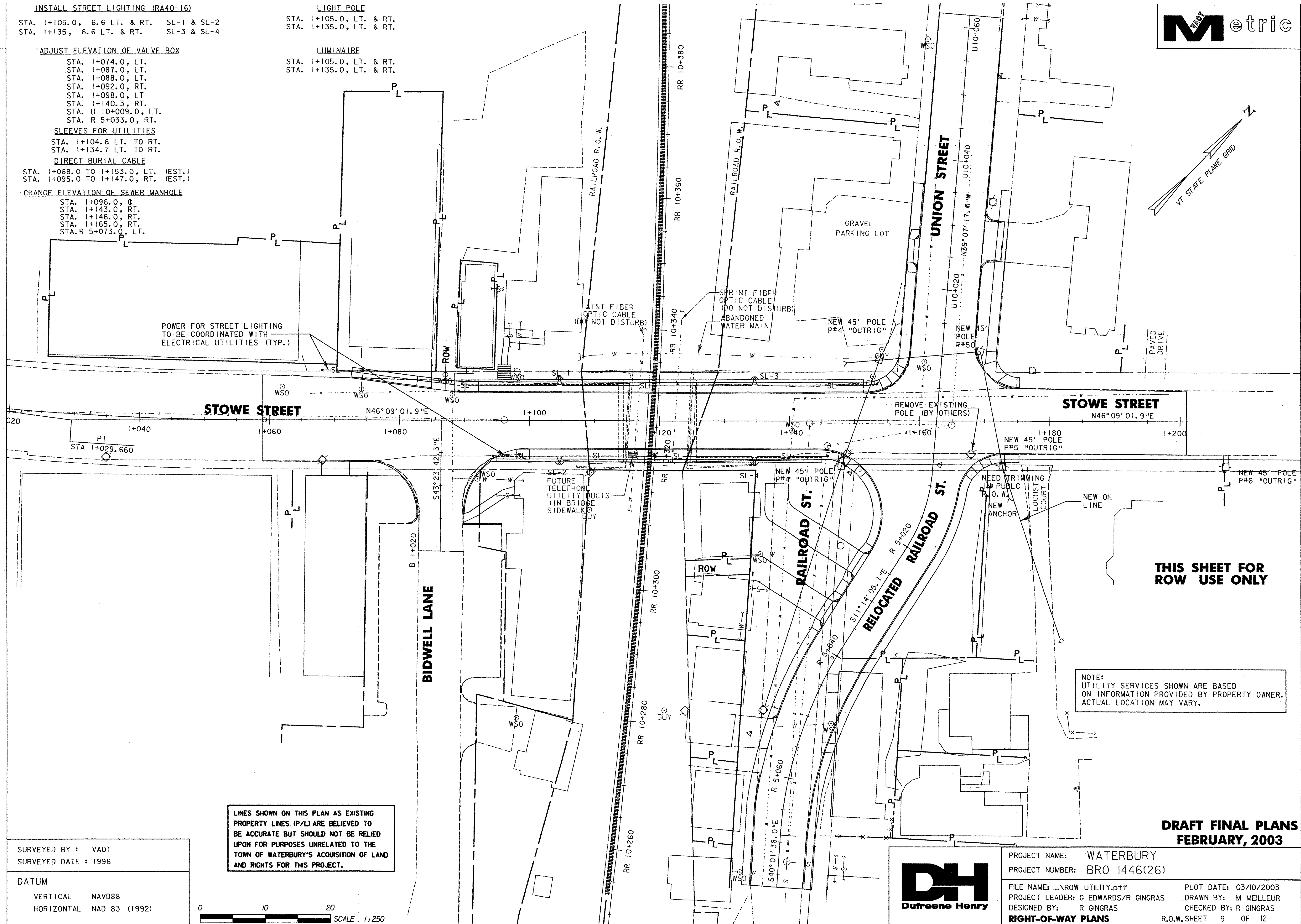
STA. 1+096.0, LT.
 STA. 1+143.0, RT.
 STA. 1+146.0, RT.
 STA. 1+165.0, RT.
 STA. R 5+073.0, LT.

LIGHT POLE

STA. 1+105.0, LT. & RT.
 STA. 1+135.0, LT. & RT.

LUMINAIRE

STA. 1+105.0, LT. & RT.
 STA. 1+135.0, LT. & RT.



POWER FOR STREET LIGHTING
 TO BE COORDINATED WITH
 ELECTRICAL UTILITIES (TYP.)

T&T FIBER
 OPTIC CABLE
 (DO NOT DISTURB)

SPRINT FIBER
 OPTIC CABLE
 (DO NOT DISTURB)

ABANDONED
 WATER MAIN

GRAVEL
 PARKING LOT

NEW 45' POLE
 P#4 "OUTRIG"

NEW 45'
 POLE
 P#50

STOWE STREET

STOWE STREET

RAILROAD ST.

RELOCATED RAILROAD ST.

BIDWELL LANE

UNION STREET

THIS SHEET FOR ROW USE ONLY

NOTE:
 UTILITY SERVICES SHOWN ARE BASED
 ON INFORMATION PROVIDED BY PROPERTY OWNER.
 ACTUAL LOCATION MAY VARY.

LINES SHOWN ON THIS PLAN AS EXISTING
 PROPERTY LINES (P/L) ARE BELIEVED TO
 BE ACCURATE BUT SHOULD NOT BE RELIED
 UPON FOR PURPOSES UNRELATED TO THE
 TOWN OF WATERBURY'S ACQUISITION OF LAND
 AND RIGHTS FOR THIS PROJECT.

SURVEYED BY : VAOT
 SURVEYED DATE : 1996

DATUM
 VERTICAL NAVD88
 HORIZONTAL NAD 83 (1992)



**DRAFT FINAL PLANS
 FEBRUARY, 2003**

PROJECT NAME: WATERBURY
 PROJECT NUMBER: BRO 1446(26)

FILE NAME: ... \ROW UTILITY.prf PLOT DATE: 03/10/2003
 PROJECT LEADER: G EDWARDS/R GINGRAS DRAWN BY: M MEILLEUR
 DESIGNED BY: R GINGRAS CHECKED BY: R GINGRAS
RIGHT-OF-WAY PLANS R.O.W. SHEET 9 OF 12