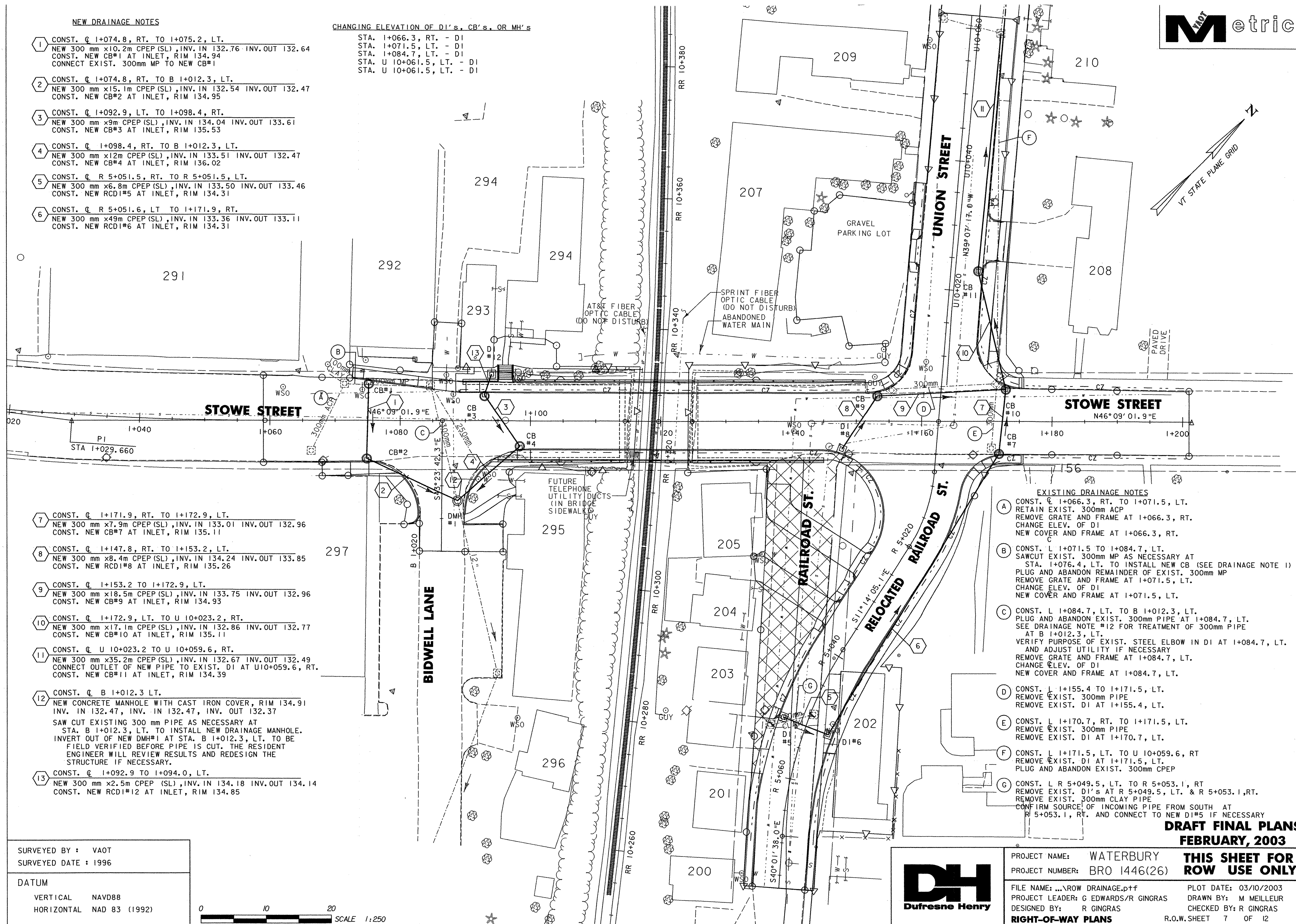


NEW DRAINAGE NOTES

- 1 CONST. C 1+074.8, RT. TO 1+075.2, LT.  
NEW 300 mm x10.2m CPEP (SL), INV. IN 132.76 INV. OUT 132.64  
CONST. NEW CB#1 AT INLET, RIM 134.94  
CONNECT EXIST. 300mm MP TO NEW CB#1
- 2 CONST. C 1+074.8, RT. TO B 1+012.3, LT.  
NEW 300 mm x15.1m CPEP (SL), INV. IN 132.54 INV. OUT 132.47  
CONST. NEW CB#2 AT INLET, RIM 134.95
- 3 CONST. C 1+092.9, LT. TO 1+098.4, RT.  
NEW 300 mm x9m CPEP (SL), INV. IN 134.04 INV. OUT 133.61  
CONST. NEW CB#3 AT INLET, RIM 135.53
- 4 CONST. C 1+098.4, RT. TO B 1+012.3, LT.  
NEW 300 mm x12m CPEP (SL), INV. IN 133.51 INV. OUT 132.47  
CONST. NEW CB#4 AT INLET, RIM 136.02
- 5 CONST. C R 5+051.5, RT. TO R 5+051.5, LT.  
NEW 300 mm x6.8m CPEP (SL), INV. IN 133.50 INV. OUT 133.46  
CONST. NEW RCD1#5 AT INLET, RIM 134.31
- 6 CONST. C R 5+051.6, LT. TO 1+171.9, RT.  
NEW 300 mm x49m CPEP (SL), INV. IN 133.36 INV. OUT 133.11  
CONST. NEW RCD1#6 AT INLET, RIM 134.31

CHANGING ELEVATION OF DI'S, CB'S, OR MH'S

- STA. 1+066.3, RT. - DI  
STA. 1+071.5, LT. - DI  
STA. 1+084.7, LT. - DI  
STA. U 10+061.5, LT. - DI  
STA. U 10+061.5, LT. - DI



- 7 CONST. C 1+171.9, RT. TO 1+172.9, LT.  
NEW 300 mm x7.9m CPEP (SL), INV. IN 133.01 INV. OUT 132.96  
CONST. NEW CB#7 AT INLET, RIM 135.11
- 8 CONST. C 1+147.8, RT. TO 1+153.2, LT.  
NEW 300 mm x8.4m CPEP (SL), INV. IN 134.24 INV. OUT 133.85  
CONST. NEW RCD1#8 AT INLET, RIM 135.26
- 9 CONST. C 1+153.2 TO 1+172.9, LT.  
NEW 300 mm x18.5m CPEP (SL), INV. IN 133.75 INV. OUT 132.96  
CONST. NEW CB#9 AT INLET, RIM 134.93
- 10 CONST. C 1+172.9, LT. TO U 10+023.2, RT.  
NEW 300 mm x17.1m CPEP (SL), INV. IN 132.86 INV. OUT 132.77  
CONST. NEW CB#10 AT INLET, RIM 135.11
- 11 CONST. C U 10+023.2 TO U 10+059.6, RT.  
NEW 300 mm x35.2m CPEP (SL), INV. IN 132.67 INV. OUT 132.49  
CONNECT OUTLET OF NEW PIPE TO EXIST. DI AT U10+059.6, RT.  
CONST. NEW CB#11 AT INLET, RIM 134.39
- 12 CONST. C B 1+012.3 LT.  
NEW CONCRETE MANHOLE WITH CAST IRON COVER, RIM 134.91  
INV. IN 132.47, INV. IN 132.47, INV. OUT 132.37  
SAW CUT EXISTING 300 mm PIPE AS NECESSARY AT  
STA. B 1+012.3, LT. TO INSTALL NEW DRAINAGE MANHOLE.  
INVERT OUT OF NEW DMH#1 AT STA. B 1+012.3, LT. TO BE  
FIELD VERIFIED BEFORE PIPE IS CUT. THE RESIDENT  
ENGINEER WILL REVIEW RESULTS AND REDESIGN THE  
STRUCTURE IF NECESSARY.
- 13 CONST. C 1+092.9 TO 1+094.0, LT.  
NEW 300 mm x2.5m CPEP (SL), INV. IN 134.18 INV. OUT 134.14  
CONST. NEW RCD1#12 AT INLET, RIM 134.85

- EXISTING DRAINAGE NOTES
- A CONST. C 1+066.3, RT. TO 1+071.5, LT.  
RETAIN EXIST. 300mm ACP  
REMOVE GRATE AND FRAME AT 1+066.3, RT.  
CHANGE ELEV. OF DI  
NEW COVER AND FRAME AT 1+066.3, RT.
  - B CONST. L 1+071.5 TO 1+084.7, LT.  
SAWCUT EXIST. 300mm MP AS NECESSARY AT  
STA. 1+076.4, LT. TO INSTALL NEW CB (SEE DRAINAGE NOTE 1)  
PLUG AND ABANDON REMAINDER OF EXIST. 300mm MP  
REMOVE GRATE AND FRAME AT 1+071.5, LT.  
CHANGE ELEV. OF DI  
NEW COVER AND FRAME AT 1+071.5, LT.
  - C CONST. L 1+084.7, LT. TO B 1+012.3, LT.  
PLUG AND ABANDON EXIST. 300mm PIPE AT 1+084.7, LT.  
SEE DRAINAGE NOTE #12 FOR TREATMENT OF 300mm PIPE  
AT B 1+012.3, LT.  
VERIFY PURPOSE OF EXIST. STEEL ELBOW IN DI AT 1+084.7, LT.  
AND ADJUST UTILITY IF NECESSARY  
REMOVE GRATE AND FRAME AT 1+084.7, LT.  
CHANGE ELEV. OF DI  
NEW COVER AND FRAME AT 1+084.7, LT.
  - D CONST. L 1+155.4 TO 1+171.5, LT.  
REMOVE EXIST. 300mm PIPE  
REMOVE EXIST. DI AT 1+155.4, LT.
  - E CONST. L 1+170.7, RT. TO 1+171.5, LT.  
REMOVE EXIST. 300mm PIPE  
REMOVE EXIST. DI AT 1+170.7, LT.
  - F CONST. L 1+171.5, LT. TO U 10+059.6, RT  
REMOVE EXIST. DI AT 1+171.5, LT.  
PLUG AND ABANDON EXIST. 300mm CPEP
  - G CONST. L R 5+049.5, LT. TO R 5+053.1, RT  
REMOVE EXIST. DI'S AT R 5+049.5, LT. & R 5+053.1, RT.  
REMOVE EXIST. 300mm CLAY PIPE  
CONFIRM SOURCE OF INCOMING PIPE FROM SOUTH AT  
R 5+053.1, RT. AND CONNECT TO NEW DI#5 IF NECESSARY

SURVEYED BY : VAOT  
SURVEYED DATE : 1996

DATUM  
VERTICAL NAVD88  
HORIZONTAL NAD 83 (1992)



PROJECT NAME: WATERBURY  
PROJECT NUMBER: BRO 1446(26)  
FILE NAME: ... \ROW DRAINAGE.prf  
PROJECT LEADER: G EDWARDS/R GINGRAS  
DESIGNED BY: R GINGRAS  
RIGHT-OF-WAY PLANS

THIS SHEET FOR ROW USE ONLY

PLOT DATE: 03/10/2003  
DRAWN BY: M MEILLEUR  
CHECKED BY: R GINGRAS  
R.O.W. SHEET 7 OF 12