

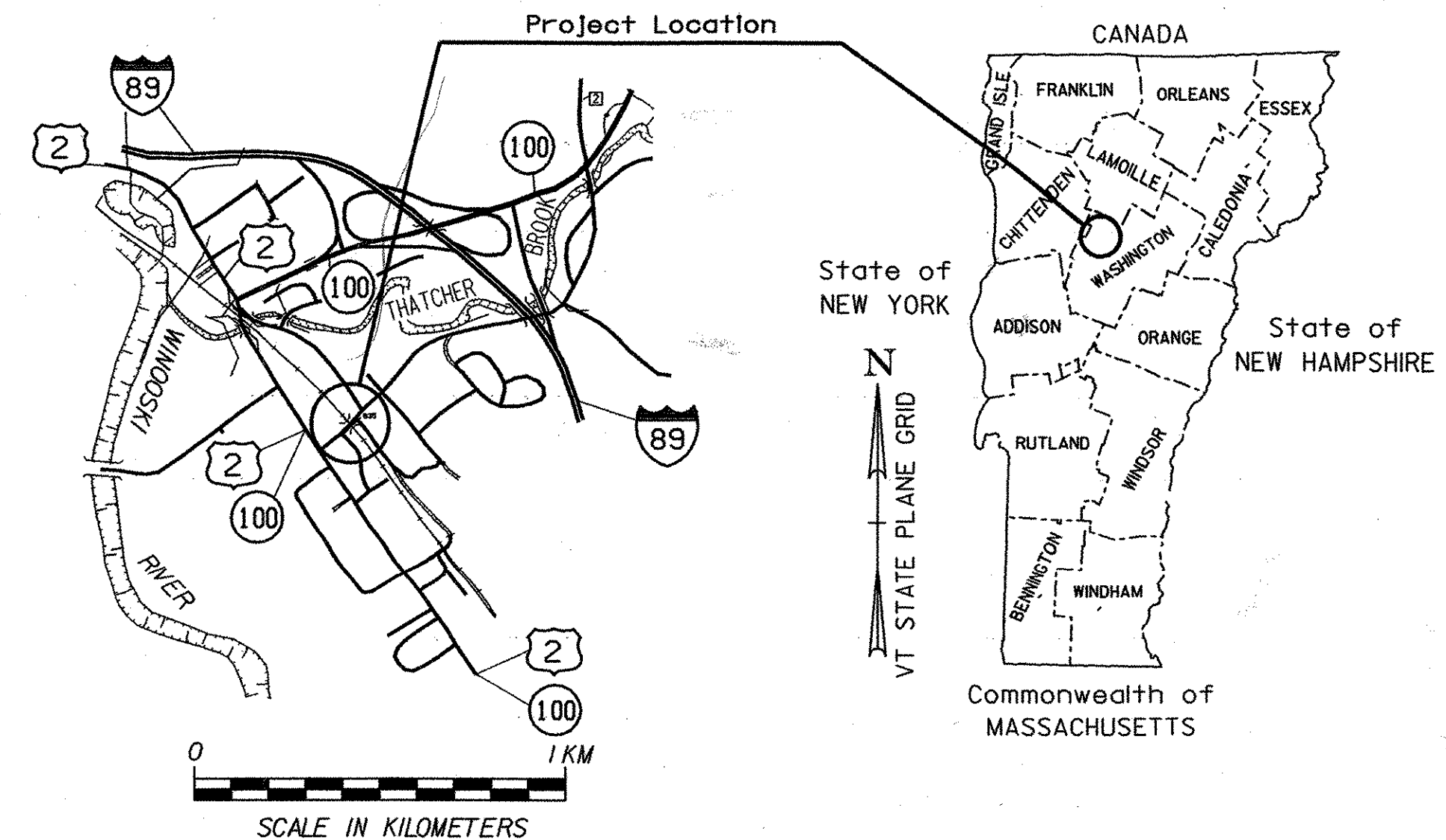
# STATE OF VERMONT AGENCY OF TRANSPORTATION



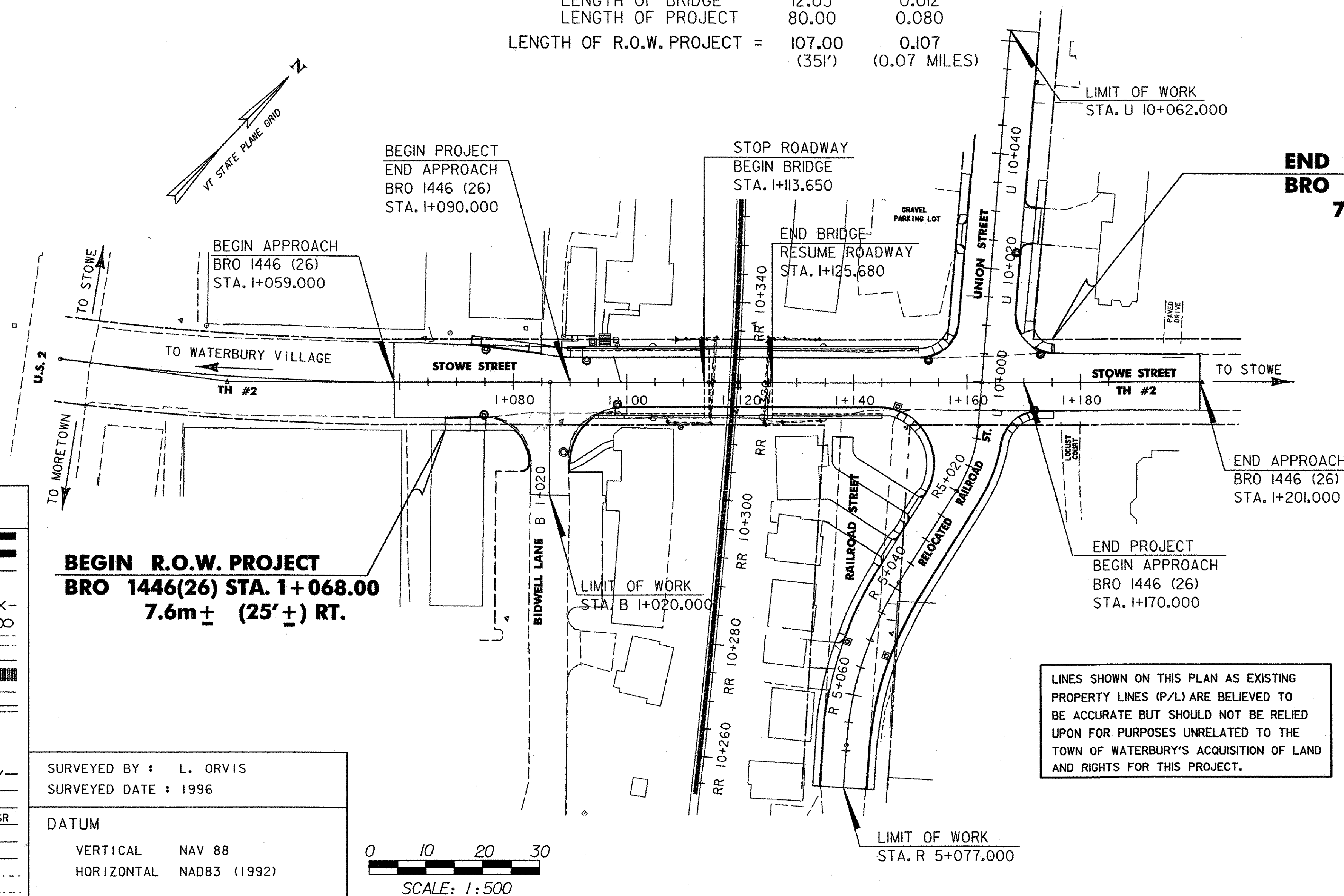
## PROPOSED IMPROVEMENT TOWN OF WATERBURY COUNTY OF WASHINGTON STOWE STREET, BRIDGE 35 (LOCAL ROAD)

BEGINNING AT A POINT APPROXIMATELY 0.059 KILOMETERS NORTHEAST OF THE U.S. ROUTE 2/VT. ROUTE 100 AND TOWN HIGHWAY #2 INTERSECTION, AND EXTENDING NORTHEASTERLY 0.080 KILOMETERS ON TOWN HIGHWAY #2. WORK TO BE PERFORMED UNDER THIS PROJECT INCLUDES THE REMOVAL OF THE EXISTING BRIDGE SUPERSTRUCTURE AND ABUTMENTS, RELOCATION OF RAILROAD STREET, CONSTRUCTION OF THE NEW BRIDGE SUPERSTRUCTURE, ABUTMENTS, ROADWAY APPROACHES, SIDEWALKS, CURBING, DRAINAGE, AND INCIDENTAL ITEMS.

PROJECT DATA	LENGTH (M)	LENGTH (KM)
LENGTH OF ROADWAY	67.97	0.068
LENGTH OF BRIDGE	12.03	0.012
LENGTH OF PROJECT	80.00	0.080
LENGTH OF R.O.W. PROJECT =	107.00 (351')	0.107 (0.07 MILES)



### R.O.W. PLANS



**END R.O.W. PROJECT**  
**BRO 1446(26) STA. 1+175.0**  
**7.6m ± (25' ±) LT.**

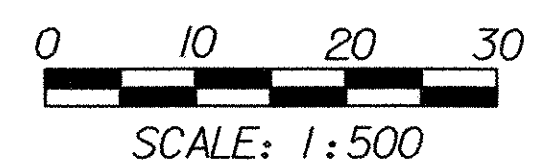
THESE PLANS ARE SUBJECT TO SUCH ENGINEERING CHANGES AS MAY BE REQUIRED BY THE FEDERAL HIGHWAY ADMINISTRATION OR THE DIRECTOR OF PROJECT DEVELOPMENT. CONSTRUCTION IS TO BE CARRIED ON IN ACCORDANCE WITH THESE PLANS AND THE STANDARD SPECIFICATIONS FOR CONSTRUCTION DATED 2001, AS APPROVED BY THE FEDERAL HIGHWAY ADMINISTRATION ON JANUARY 4, 2001 FOR USE ON THIS PROJECT, INCLUDING ALL SUBSEQUENT REVISIONS AND SUCH REVISED SPECIFICATIONS AND SPECIAL PROVISIONS AS ARE INCORPORATED IN THESE PLANS.

CONVENTIONAL SYMBOLS	
COUNTY LINE	
TOWN LINE	
LIMITS OF ACCESS	
POINT OF ACCESS	
FENCE LINE	
STONE WALL	
TRAVELED WAY	
GUARD RAIL	
RAILROAD	
SURVEY LINE	
CULVERT	
POWER POLE	
TELEPHONE POLE	
TREES	
CONTROL OF ACCESS	
PROPERTY LINE	
R.O.W. TAKING LINE	
SLOPE RIGHTS	
TOP OF CUT	
TOE OF SLOPE	
UNDERGROUND TELEPHONE	
UNDERGROUND ELECTRIC	

**BEGIN R.O.W. PROJECT**  
**BRO 1446(26) STA. 1+068.00**  
**7.6m ± (25' ±) RT.**

SURVEYED BY : L. ORVIS  
SURVEYED DATE : 1996

DATUM  
VERTICAL NAV 88  
HORIZONTAL NAD83 (1992)



LINES SHOWN ON THIS PLAN AS EXISTING PROPERTY LINES (P/L) ARE BELIEVED TO BE ACCURATE BUT SHOULD NOT BE RELIED UPON FOR PURPOSES UNRELATED TO THE TOWN OF WATERBURY'S ACQUISITION OF LAND AND RIGHTS FOR THIS PROJECT.



UNLESS NOTED OTHERWISE  
STATIONS ARE IN KILOMETERS  
ELEVATIONS ARE IN METERS  
DIMENSIONS ARE IN MILLIMETERS

#### RIGHT-OF-WAY PLANS

CHIEF OF R.O.W.  
APPROVED *Allen N. Blaine* DATE 3/27/03

DIRECTOR OF PROJECT DEVELOPMENT  
APPROVED *[Signature]* DATE 3/27/03

PROJECT MANAGER : CHRIS WILLIAMS

PROJECT NAME : WATERBURY  
PROJECT NUMBER : BRO 1446 (26)

R. O. W. SHEET 1 OF 12 SHEETS

