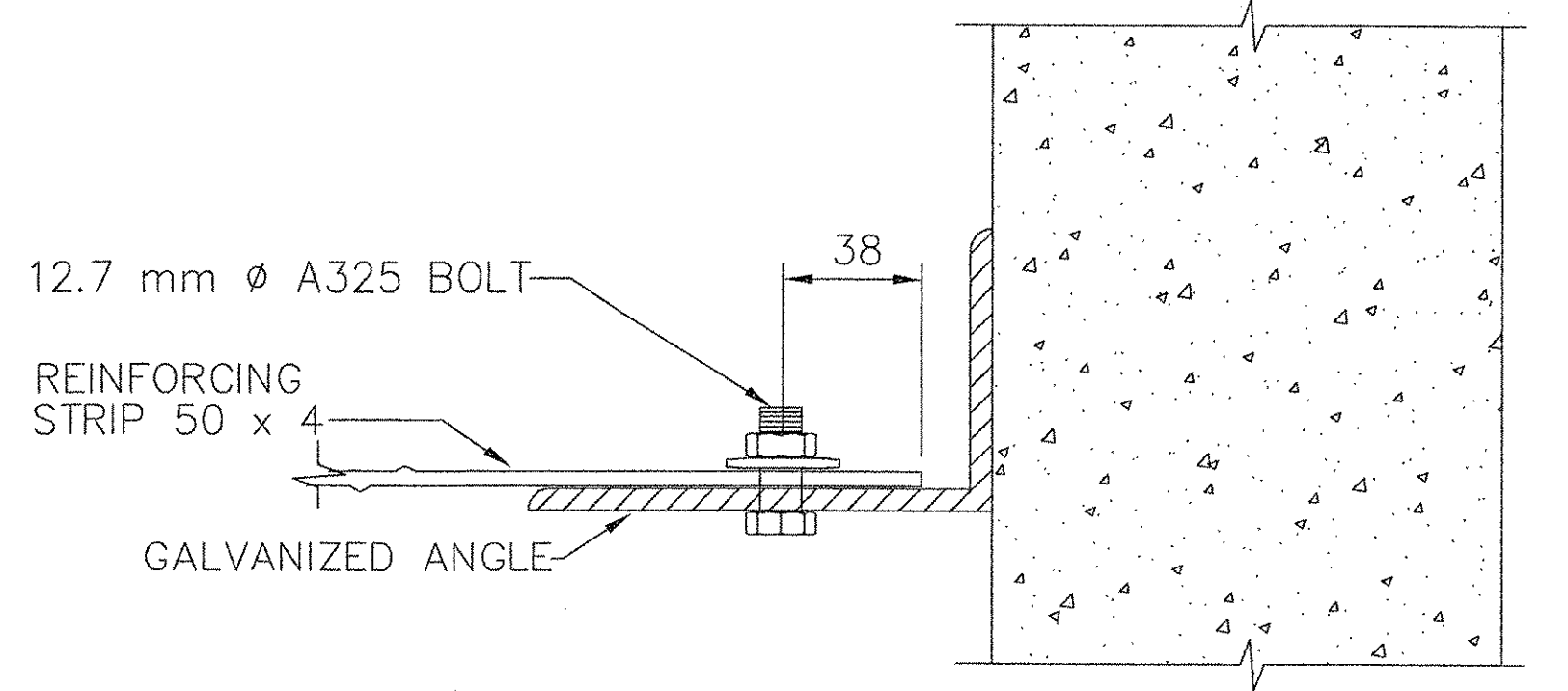
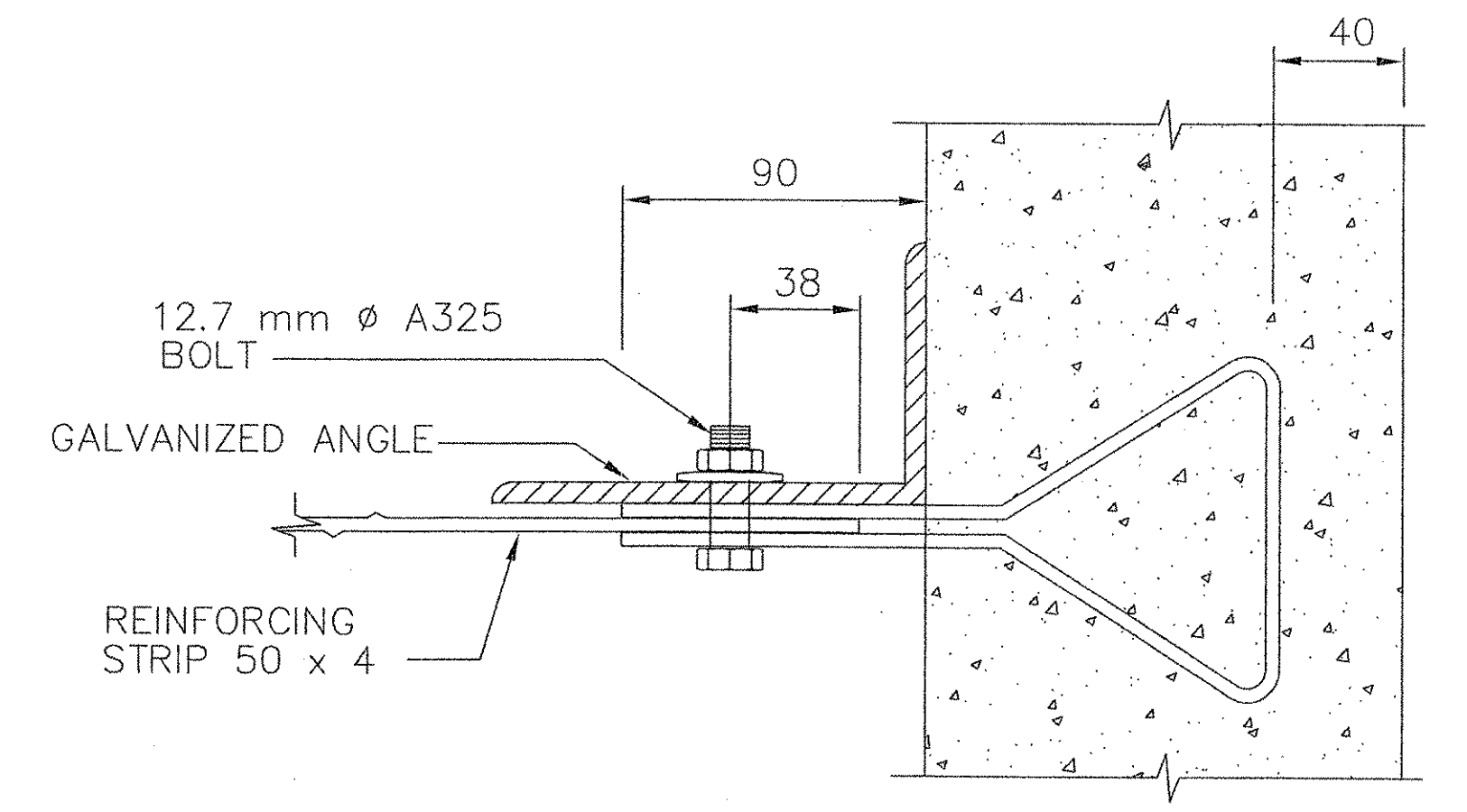


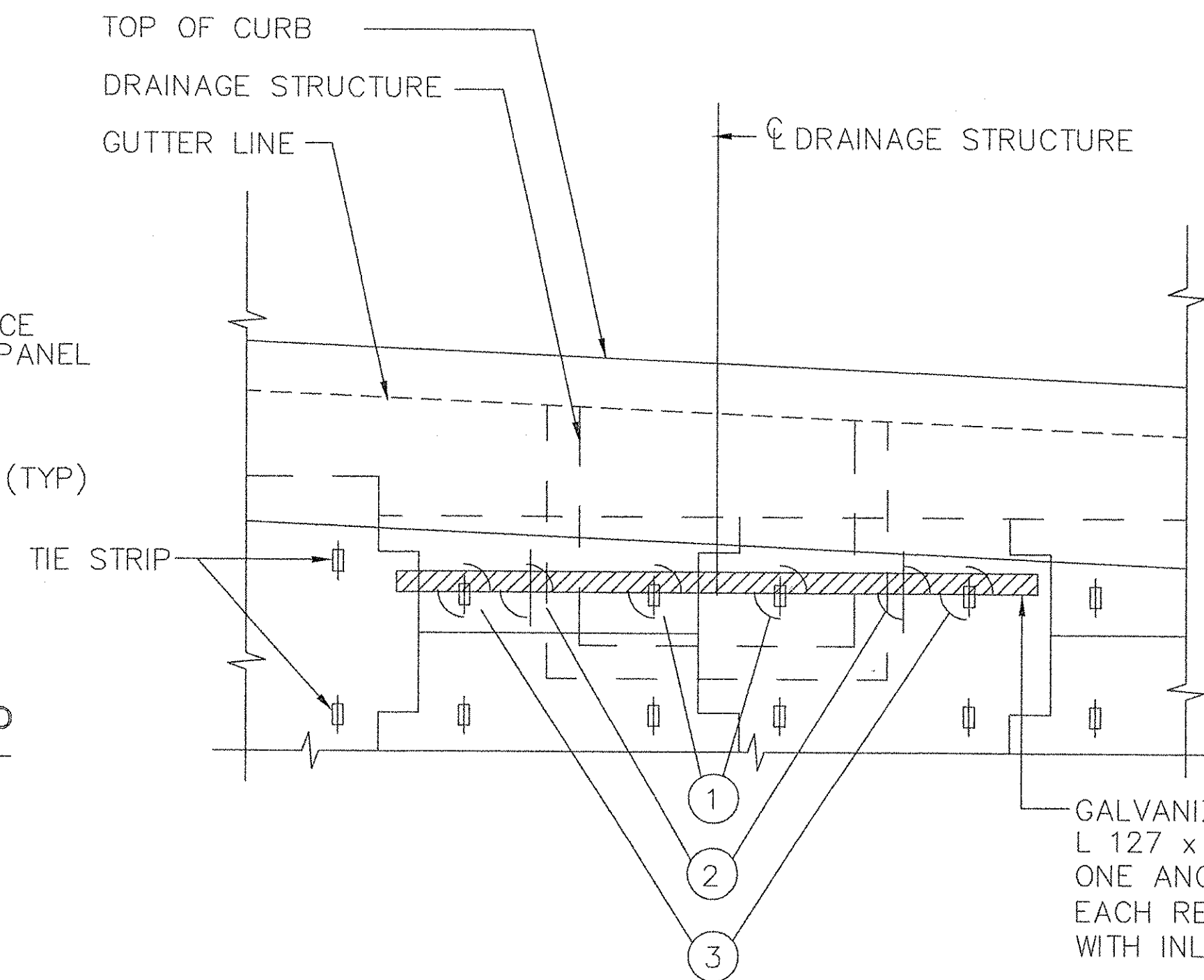
1 ANGLE BOLTED TO TIE STRIP



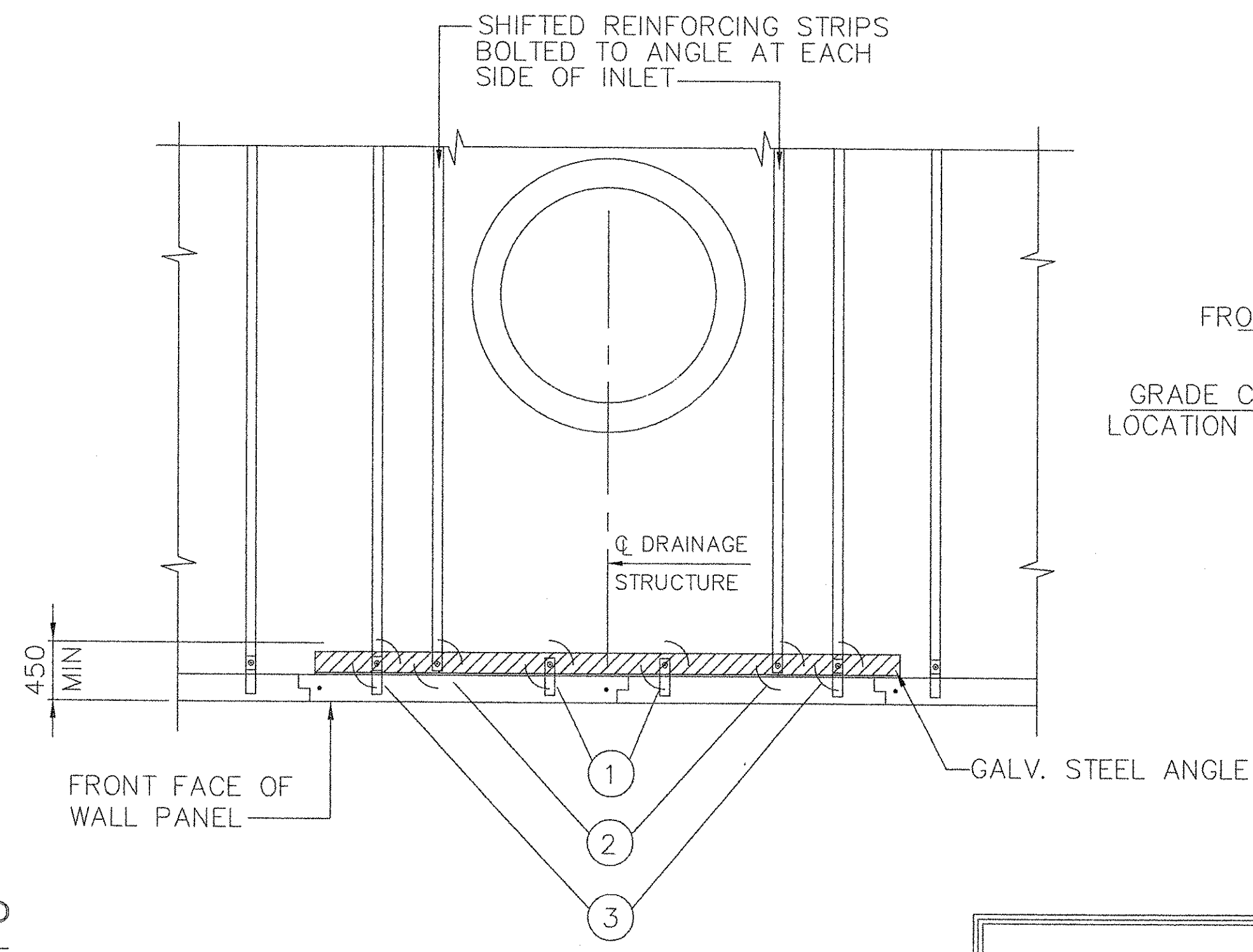
2 SHIFTED REINF. STRIP BOLTED TO ANGLE



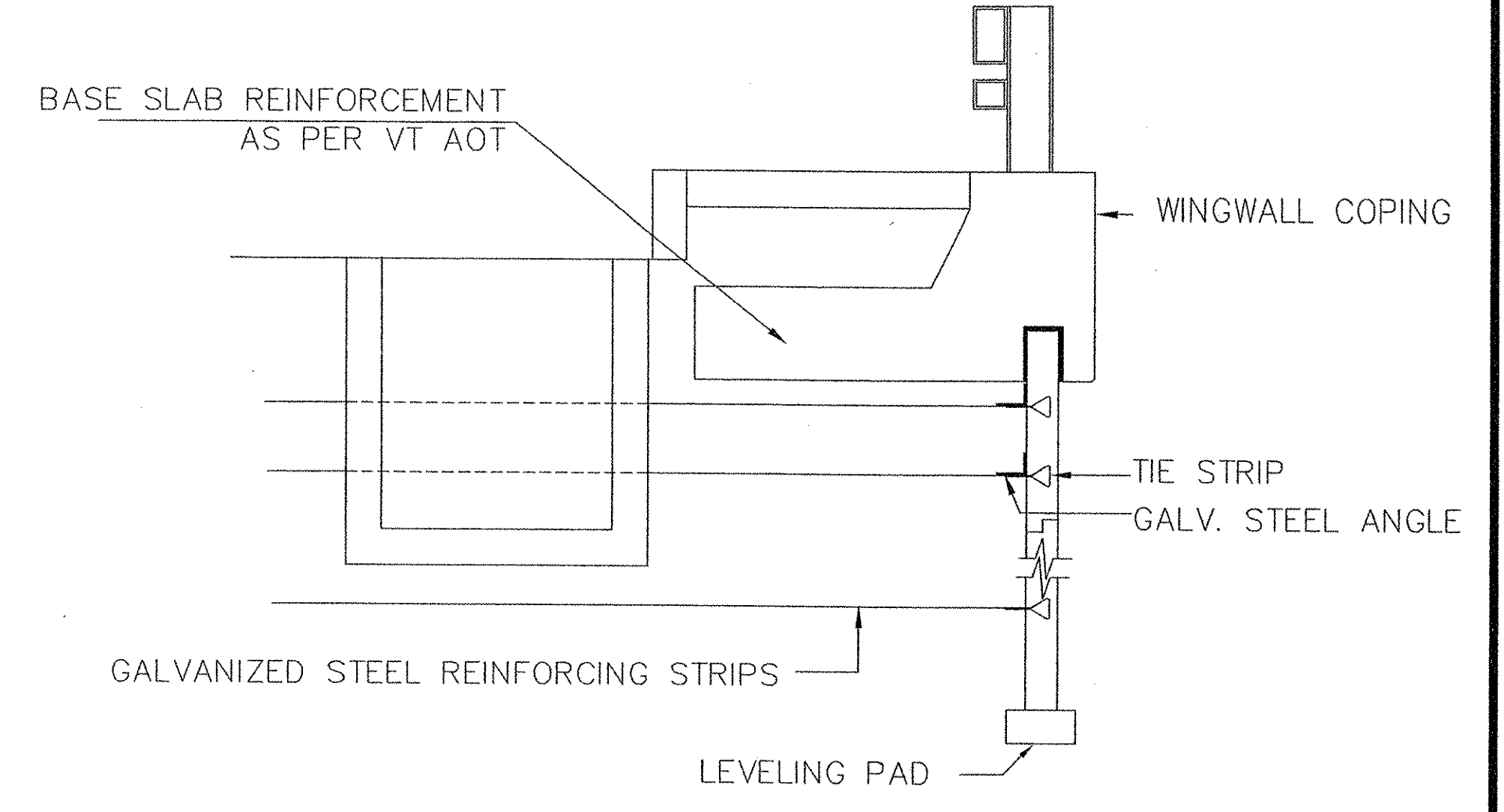
3 ANGLE BOLTED TO TIE STRIP WITH REINF. STRIP CONNECTION DETAILS 1 THRU 3
SCALE 1:2



PARTIAL ELEVATION
SCALE 1:25



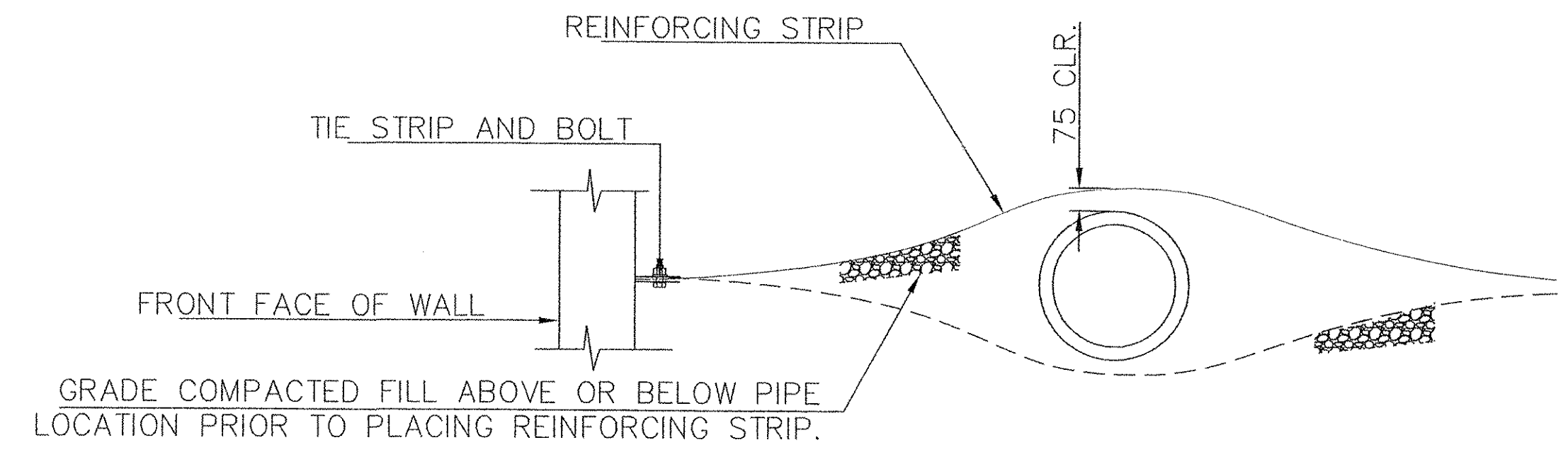
PARTIAL PLAN
SCALE 1:25



TYPICAL SECTION AT CATCH BASINS

ALL DIMENSIONS ON THIS SHEET ARE IN MILLIMETERS UNLESS NOTED OTHERWISE.

STEEL ANGLES SHALL BE ASTM A709M GRADE 250. GALVANIZED PER ASTM A-123. FIELD DRILL 14mm HOLES IN ANGLE AT LOCATIONS REQUIRED FOR BOLTED CONNECTIONS. APPLY TWO COATS OF ZINC-RICH GALVANIZING PAINT TO FIELD DRILLED HOLES.



REINFORCING STRIP SHALL BE GRADUALLY DEFLECTED EITHER ABOVE OR BELOW PIPE (WHICHEVER CREATES THE LEAST ANGLE OF DEFLECTION). PLACE REINFORCING STRIP ON COMPACTED BACKFILL.

REINFORCING STRIP DEFLECTION AT PIPES BEHIND WALL

FOR EVERY TIE STRIP BLOCKED BY CATCH BASIN, SHIFT ASSOCIATED REINFORCING STRIP TO SIDE OF CATCH BASIN, BOLT REINFORCING STRIP TO ANGLE AND PLACE NORMAL TO WALL.

RECEIVED
OK'D BY: *CPW* OK'D BY: _____
AUG 11 2004
RESUBMIT _____ APPROVED ✓
BY: *CPW* DATE: 8/13/04

CERTIFIED WITH RESPECT TO THE INTERNAL STABILITY OF REINFORCED EARTH STRUCTURES ONLY
STATE OF VERMONT
PETER L. ANDERSON
PROFESSIONAL ENGINEER
0181
8/13/04

VT AOT PROJ. NO. BRO 1446(26)

C:\11069\11069_D2.DWG

This drawing contains information proprietary to The Reinforced Earth Company, and is being furnished for the use of VT AOT only in connection with this project, and the information contained herein is not to be transmitted to any other organization unless specifically authorized in writing by The Reinforced Earth Company. The Reinforced Earth Company is exclusive licensee in the United States under patents issued to Henri Vidal, and the furnishing of this drawing does not constitute an expressed or implied license under the Vidal patents.

The design contained on these drawings is based on information provided by the owner. On the basis of this information, The Reinforced Earth Company has designed, and is responsible for the internal stability of the structure only. External stability, including foundation and slope stability, is the responsibility of the owner.

The Reinforced Earth Company
8614 Westwood Center Drive Suite 1100, Vienna, Virginia 22182 (703) 821-1175
"REINFORCED EARTH" is the registered trademark of The Reinforced Earth Company.

DESIGNED BY: KPB		PROJECT NAME STOWE STREET BRIDGE OVER CENTRAL VT RAILROAD	DATE 6-25-04
PROJECT ENGR: KPB		LOCATION WATERBURY VERMONT	CONTRACT NO. 11069
CHECKED BY: PLA		OWNER VT AOT	DRAWING NO. 6 OF 7
ENG. MANAGER	REV. DATE	DESCRIPTION	SCALE AS SHOWN
		DRAWING COVERS DETAILS AT DRAINAGE STRUCTURES	

069 E.W.