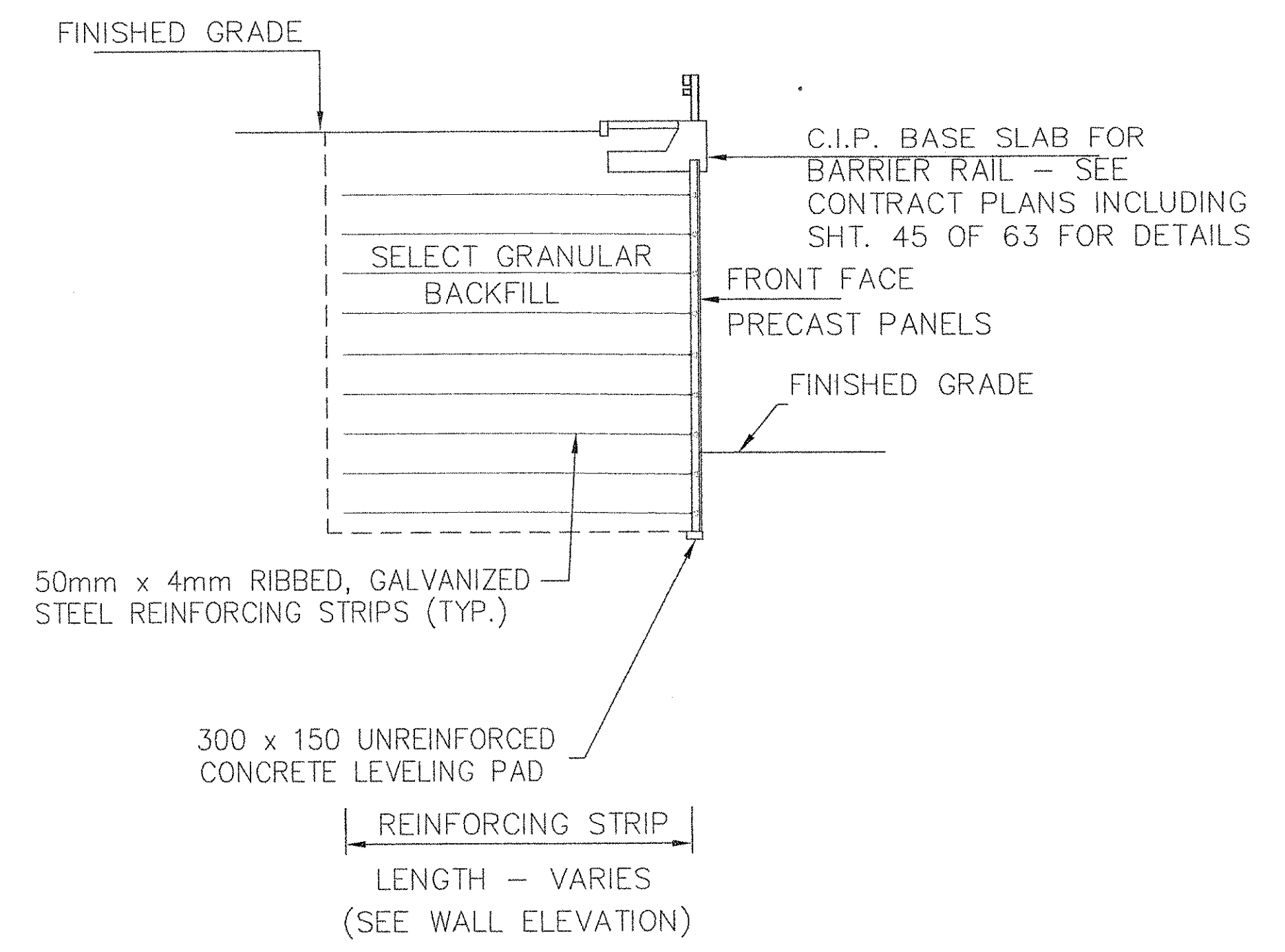


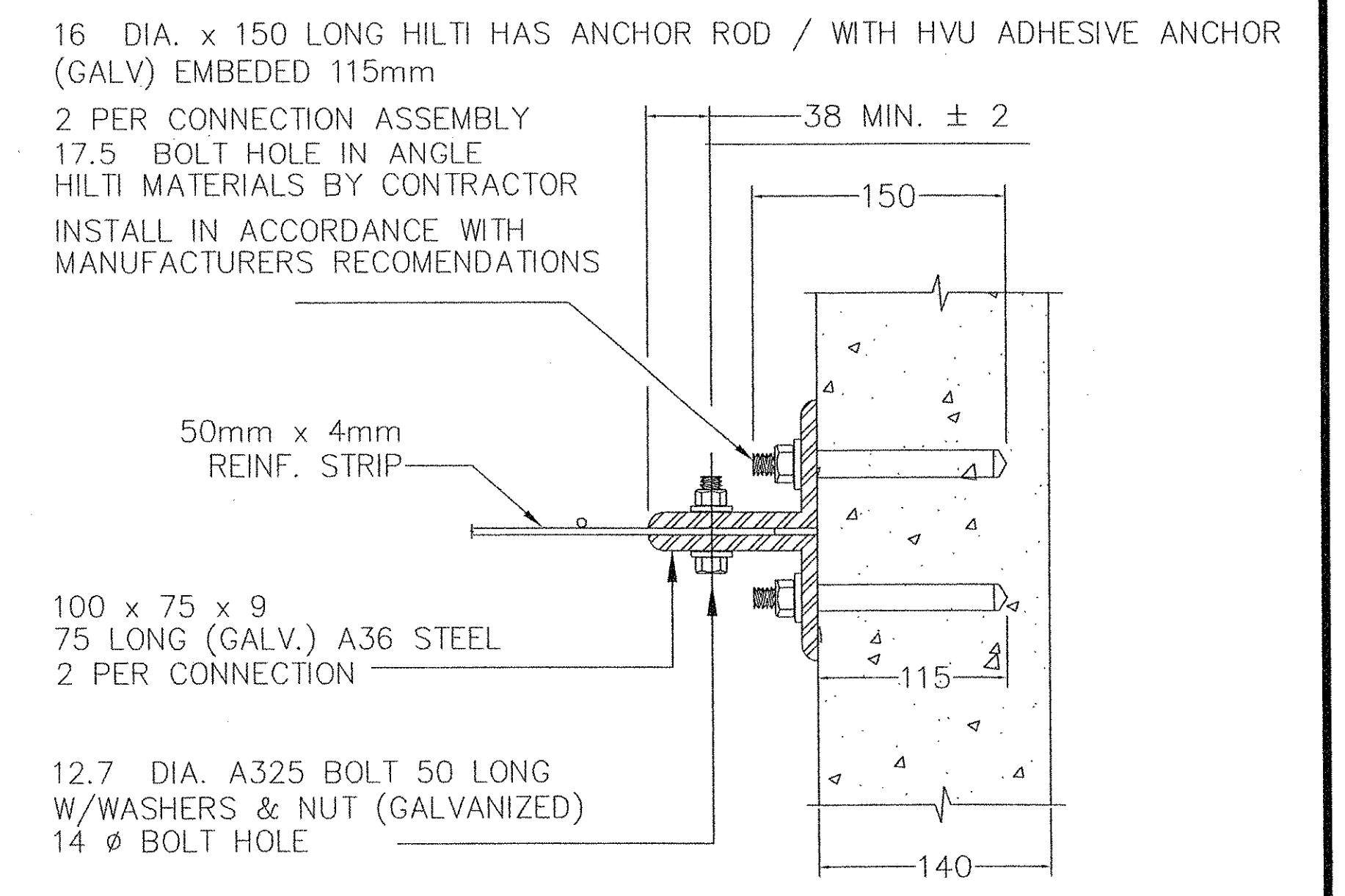
NOTES:

1. STRIPS OF FILTER CLOTH SHALL BE PLACED ON BACK FACE OF PANEL, OVER PANEL JOINTS. FILTER CLOTH SHALL BE ADHERED TO BACK FACE OF PANELS USING AN ADHESIVE COMPOUND SUPPLIED BY THE REINFORCED EARTH COMPANY.
2. THE CONTRACTOR SHALL PROVIDE THE RESIDENT ENGINEER WITH THE MANUFACTURERS TECHNICAL DATA SHEET AND APPLICATION INSTRUCTIONS FOR THE ADHESIVE COMPOUND.

**FILTER CLOTH DETAIL
PARTIAL ELEVATION - BACK FACE**
SCALE 1:50

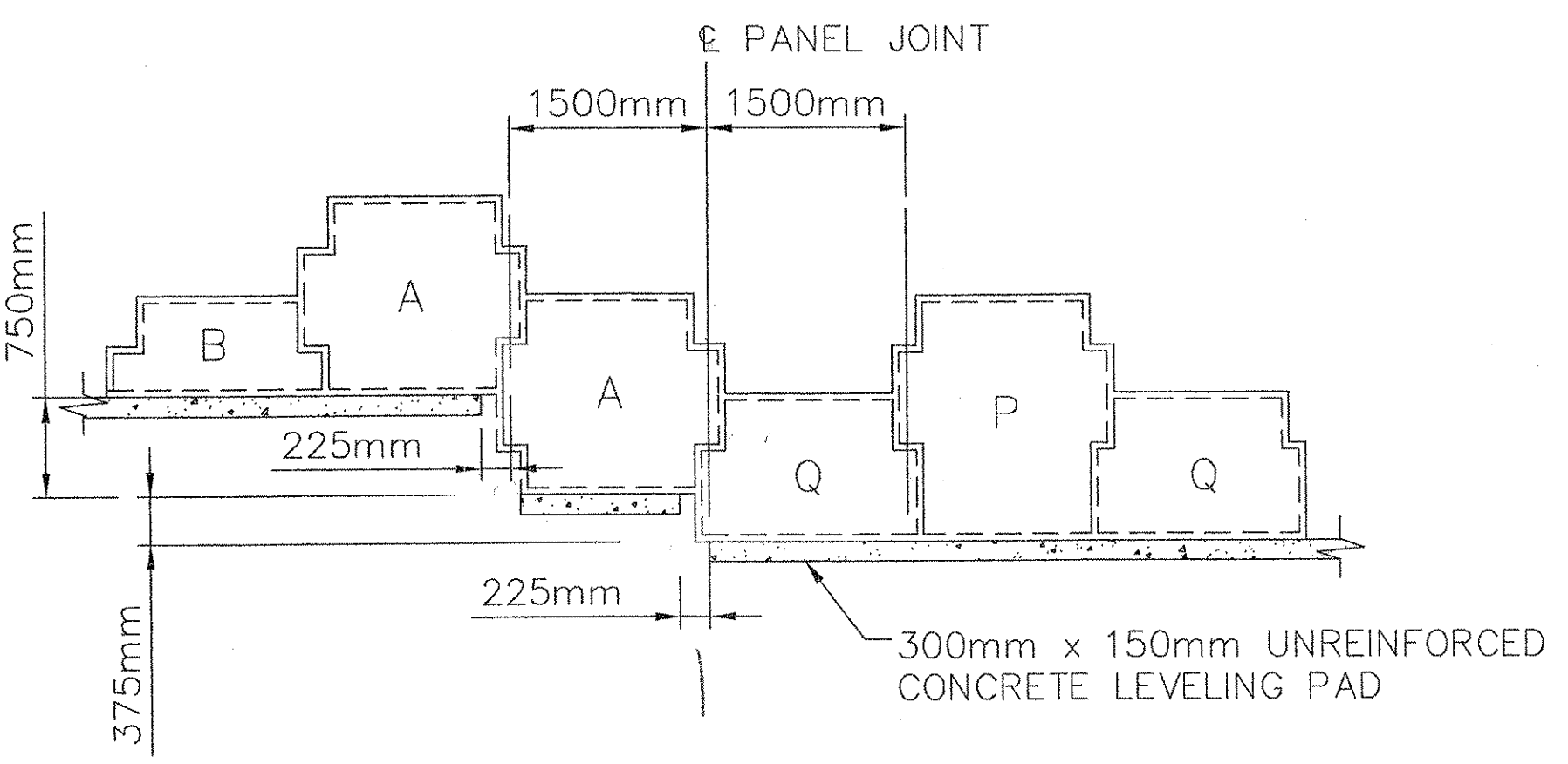
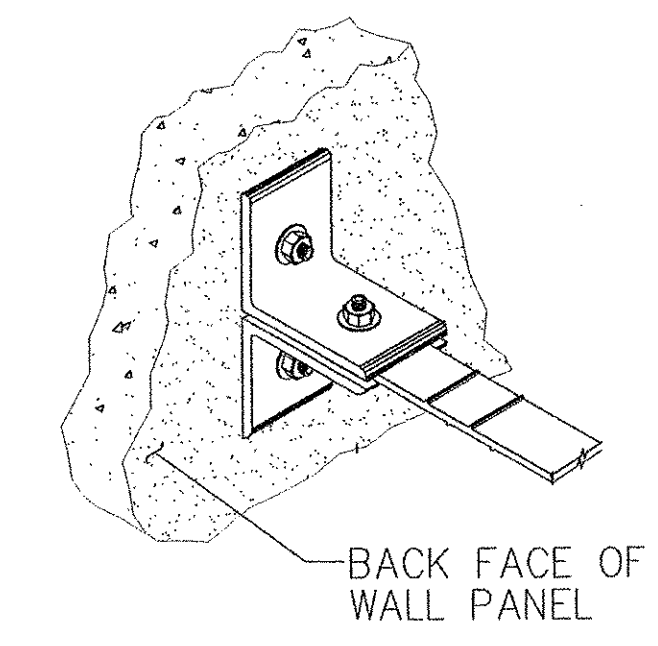


**TYPICAL SECTION
APPROACH WALLS**
SCALE: 1 : 100

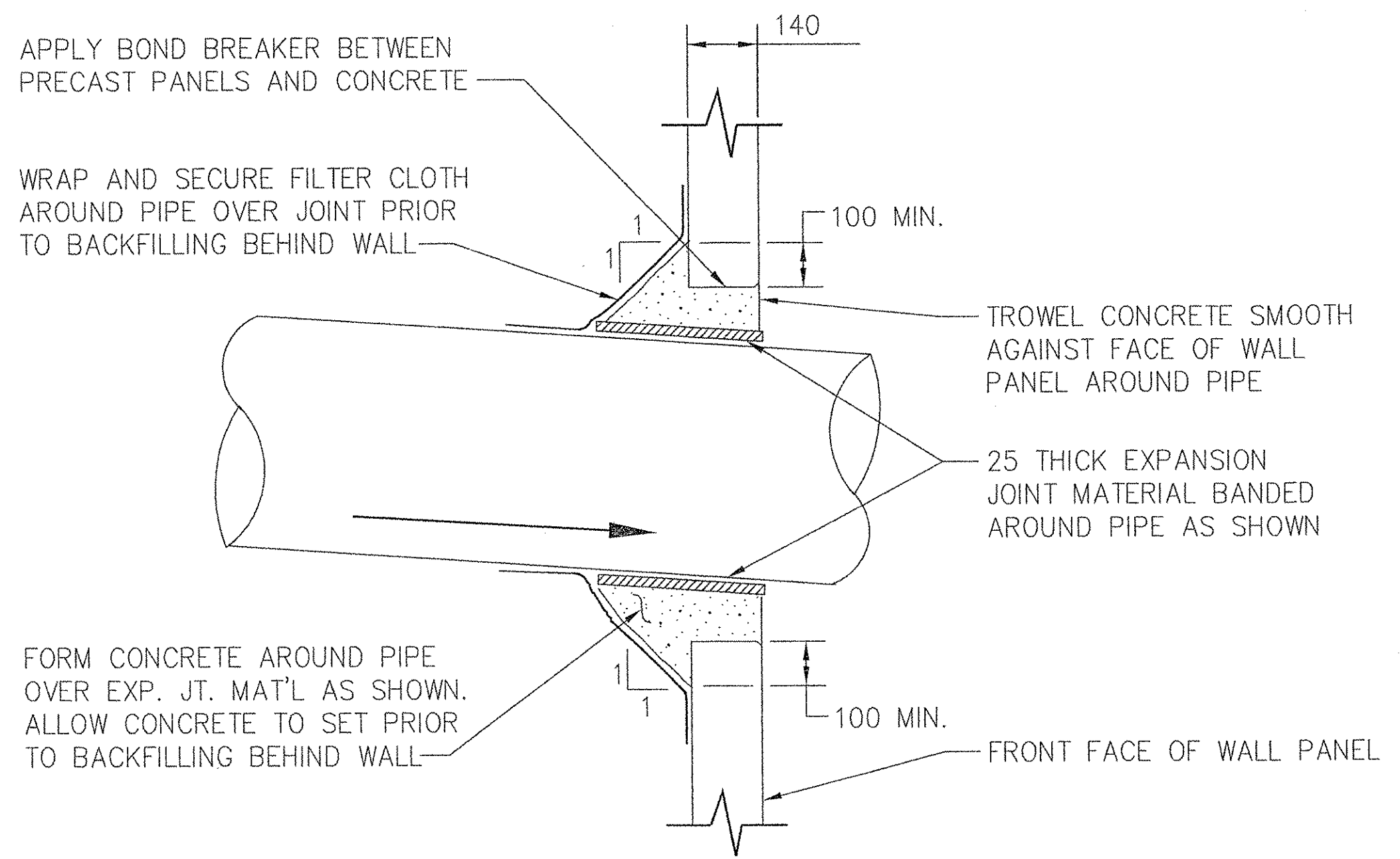


CLIP ANGLE DETAIL
NTS

- MATERIAL PROPERTIES**
1. CLIP ANGLE - A36 STEEL GALVANIZED PER ASTM A-123 OR AASHTO M111
 2. 1/2" Ø BOLTS - A325 - GALVANIZED PER ASTM A-153
 3. FOR REINFORCING STRIP MATERIAL SPECIFICATIONS SEE SHEET 1 OF 7, NOTE NO. 5.
 4. HILTI COMPONENTS PER HILTI SPECS.



TYPICAL LEVELING PAD STEP DETAIL



PIPE PENETRATION AT WALL FACE DETAIL
SCALE: 1 : 100

RECEIVED
CK'D BY: *OPW* OK'D BY: _____
AUG 11 2004
RESUBMIT: _____ APPROVED:
BY: *OPW* DATE: 8/13/04

CERTIFIED WITH RESPECT TO THE INTERNAL STABILITY OF REINFORCED EARTH STRUCTURES ONLY

VT AOT PROJ. NO. BRO 1446(26)

<p>This drawing contains information proprietary to The Reinforced Earth Company, and is being furnished for the use of VT AOT only in connection with this project, and the information contained herein is not to be transmitted to any other organization unless specifically authorized in writing by The Reinforced Earth Company. The Reinforced Earth Company is exclusive licensee in the United States under patents issued to Henri Vidal, and the furnishing of this drawing does not constitute an expressed or implied license under the Vidal patents.</p>	<p>The design contained on these drawings is based on information provided by the owner. On the basis of this information, The Reinforced Earth Company has designed, and is responsible for the internal stability of the structure only. External stability, including foundation and slope stability, is the responsibility of the owner.</p>	<p>The Reinforced Earth Company 8614 Westwood Center Drive Suite 1100, Vienna, Virginia 22182 (703) 821-1175</p>		DESIGNED BY: KPB				PROJECT NAME	STOWE STREET BRIDGE OVER CENTRAL VT RAILROAD	DATE	6-25-04
		PROJECT ENGR: KPB				LOCATION	WATERBURY VERMONT	CONTRACT NO.	11069		
		CHECKED BY: PLA	8/6/04	REV. AS PER VTRANS COMMENTS (ADDED CLIP ANGLE DETAIL)	OWNER	VT AOT	DRAWING NO.	5 OF 7			
		ENG. MANAGER REV.	DATE	DESCRIPTION	DRAWING COVERS	TYPICAL SECTION AND DETAILS	SCALE	AS SHOWN			