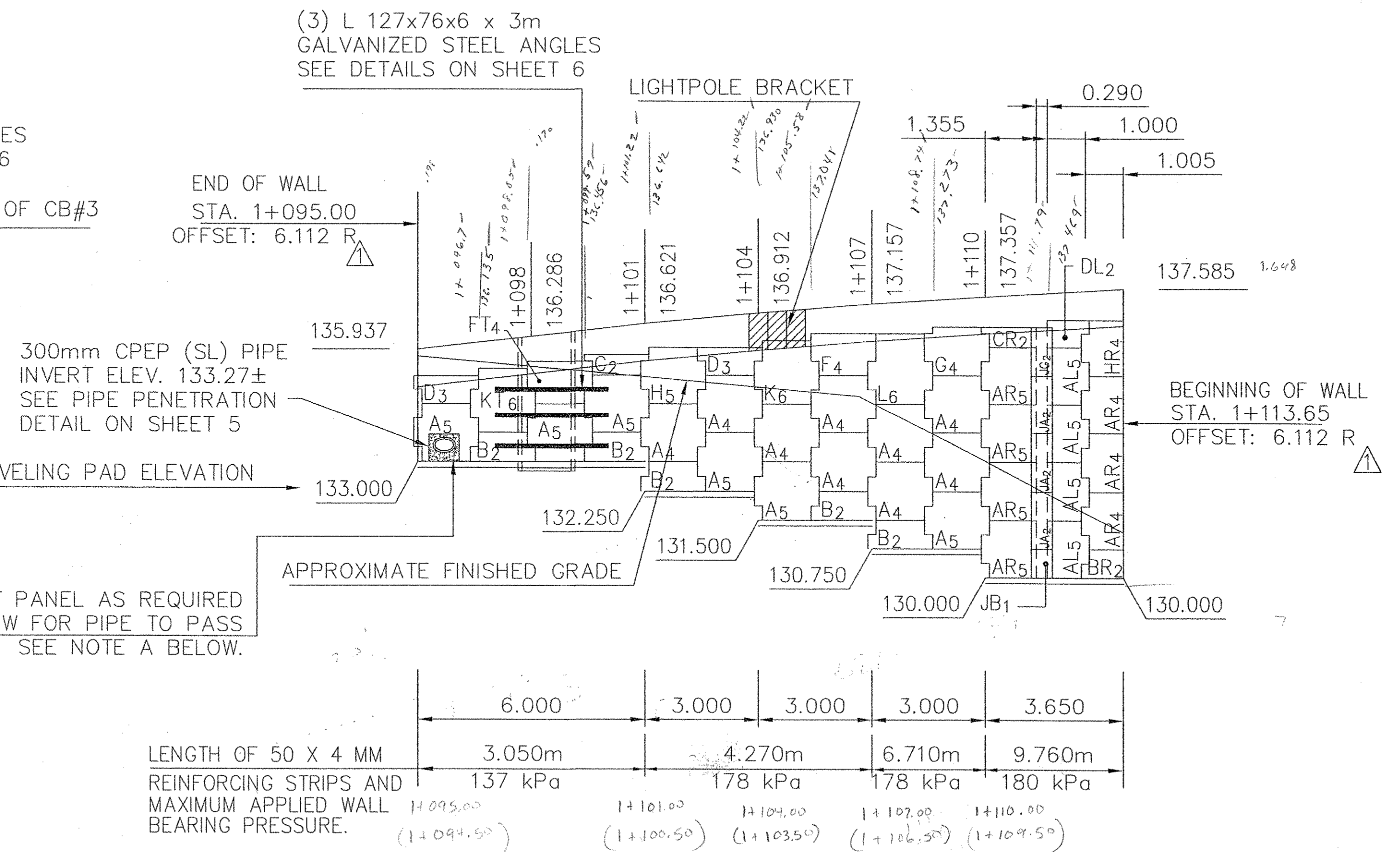


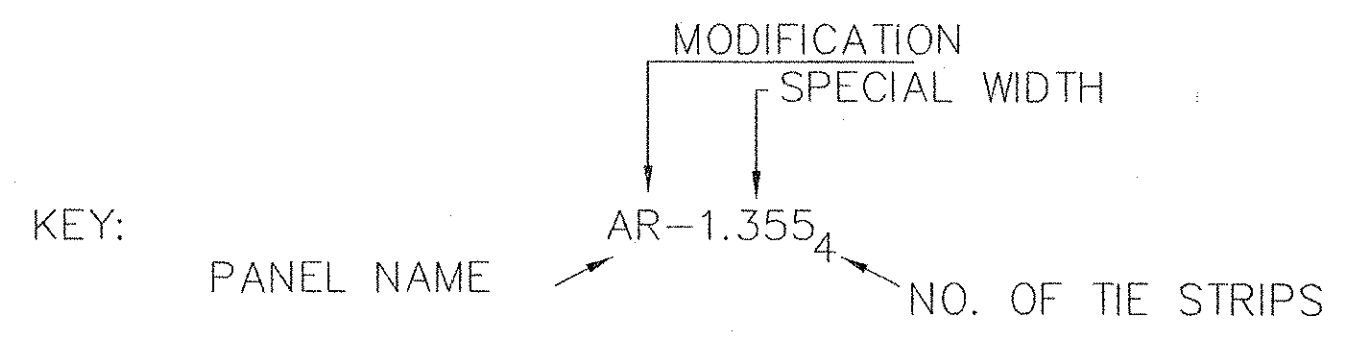
ELEVATION - FRONT FACE - WINGWALL NO. 1  
SCALE = 1 : 100



ELEVATION - FRONT FACE - WINGWALL NO. 2  
SCALE = 1 : 100

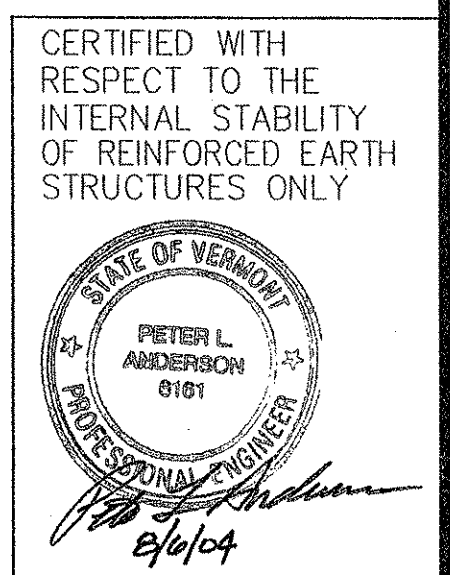
NOTE A:  
AS PER VTRANS COMMENTS, THE DRAINAGE STRUCTURE OFFSET INFORMATION HAS BEEN PROVIDED. HOWEVER, DUE TO FIELD TOLERANCES IN PLACING DRAINAGE STRUCTURES, THE MSE WALL PANELS SHALL BE FIELD CUT IN ORDER TO ALLOW FOR PIPES TO PASS THRU THE WALL. ANY REBAR EXPOSED DUE TO SAW CUTTING SHALL BE PAINTED WITH TWO COATS OF VTRANS APPROVED EPOXY PAINT.  
IN INSTANCES WHERE THE TIE STRIPS ARE REMOVED DUE TO THE SAW CUT, OR INSUFFICIENT CLEARANCE FROM THE EDGE OF CONCRETE TO THE EDGE OF TIE STRIPS (LESS THAN 3") IS PROVIDED, THE CONTRACTOR SHALL INSTALL CLIP ANGLES AS SHOWN ON THE CLIP ANGLE DETAIL (SHEET 5 OF 7, THESE PLANS). RECO SHALL PROVIDE THE NECESSARY CLIP ANGLES AND HILTI ANCHORS.

NOTES:  
LENGTH OF LEVELING PAD IS BASED ON INDIVIDUAL PANEL WIDTHS, Q OF EAR TO Q OF EAR. USE THE STEP DETAIL ON SHEET No. 4 TO DETERMINE THE ACTUAL LEVELING PAD STEP LOCATION.  
FOR TYPICAL WALL SECTIONS SEE SHEET No. 4.  
FOR GUIDERAIL AND COPING DETAILS - SEE CONTRACT PLANS (INCL SHEET 45 OF 63).



SEE CONTRACT PLANS FOR LOCATIONS AND DETAILS OF CONCRETE BRACKET FOR LIGHTPOLES

RECEIVED  
CHK'D BY: CPW OK'D BY: \_\_\_\_\_  
AUG 1 2004  
RESUBMIT APPROVED ✓  
BY: CPW DATE: 8/13/04



This drawing contains information proprietary to The Reinforced Earth Company, and is being furnished for the use of VT ACT only in connection with this project, and the information contained herein is not to be transmitted to any other organization unless specifically authorized in writing by The Reinforced Earth Company. The Reinforced Earth Company is exclusive licensee in the United States under patents issued to Henri Vidal, and the furnishing of this drawing does not constitute an expressed or implied license under the Vidal patents.	The design contained on these drawings is based on information provided by the owner. On the basis of this information, The Reinforced Earth Company has designed, and is responsible for the internal stability of the structure only. External stability, including foundation and slope stability, is the responsibility of the owner.	DESIGNED BY: KPB	PROJECT ENGR: KPB	PROJECT NAME STOWE STREET BRIDGE OVER CENTRAL VT RAILROAD	DATE 6-25-04
		CHECKED BY: PLA	ENG. MANAGER REV. DATE	LOCATION WATERBURY VERMONT	OWNER VT AOT
"REINFORCED EARTH" is the registered trademark of The Reinforced Earth Company.	8/6/04 REV. AS PER VTRANS COMMENTS.	DESCRIPTION ELEV. VIEW- R.E. WALLS 1 & 2	DRAWING NO. 3 OF 7	DRAWING NO. 3 OF 7	SCALE AS SHOWN

066EW