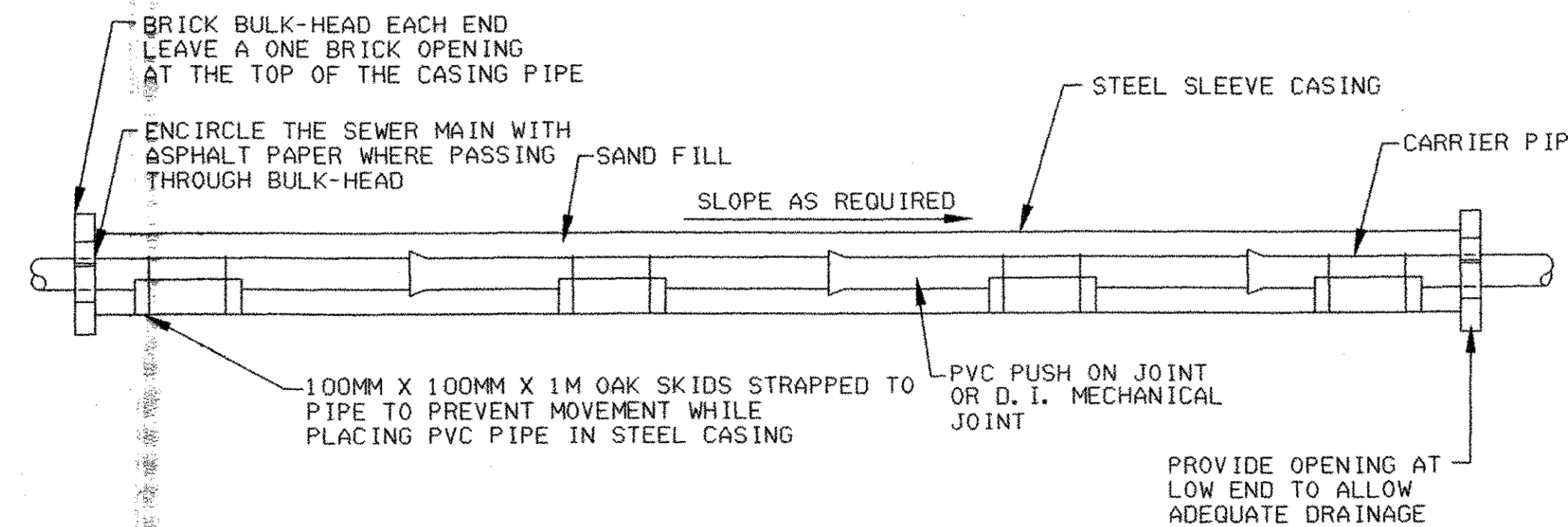
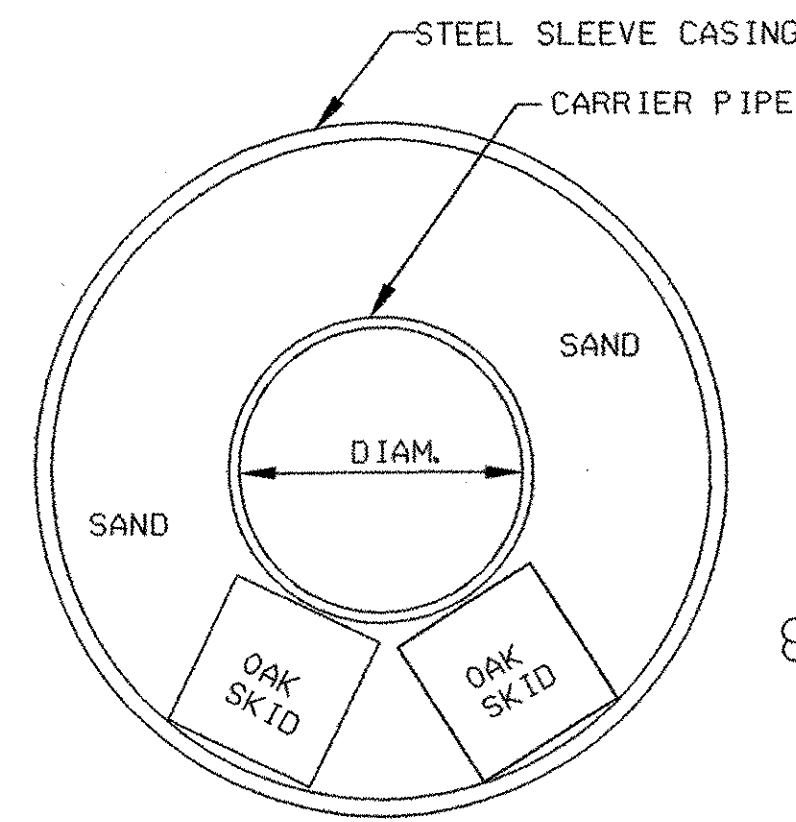
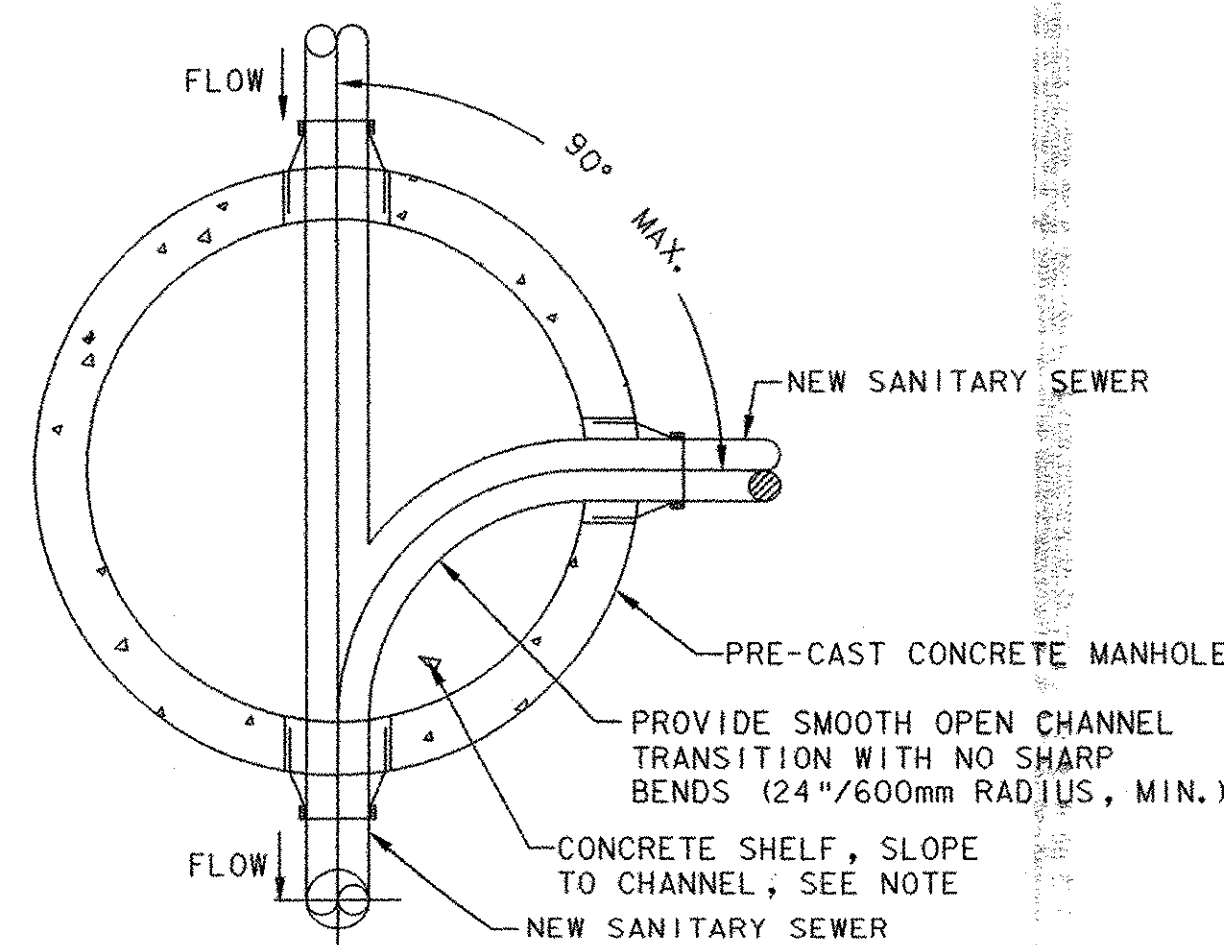


TYPICAL SERVICE LATERAL
NOT TO SCALE

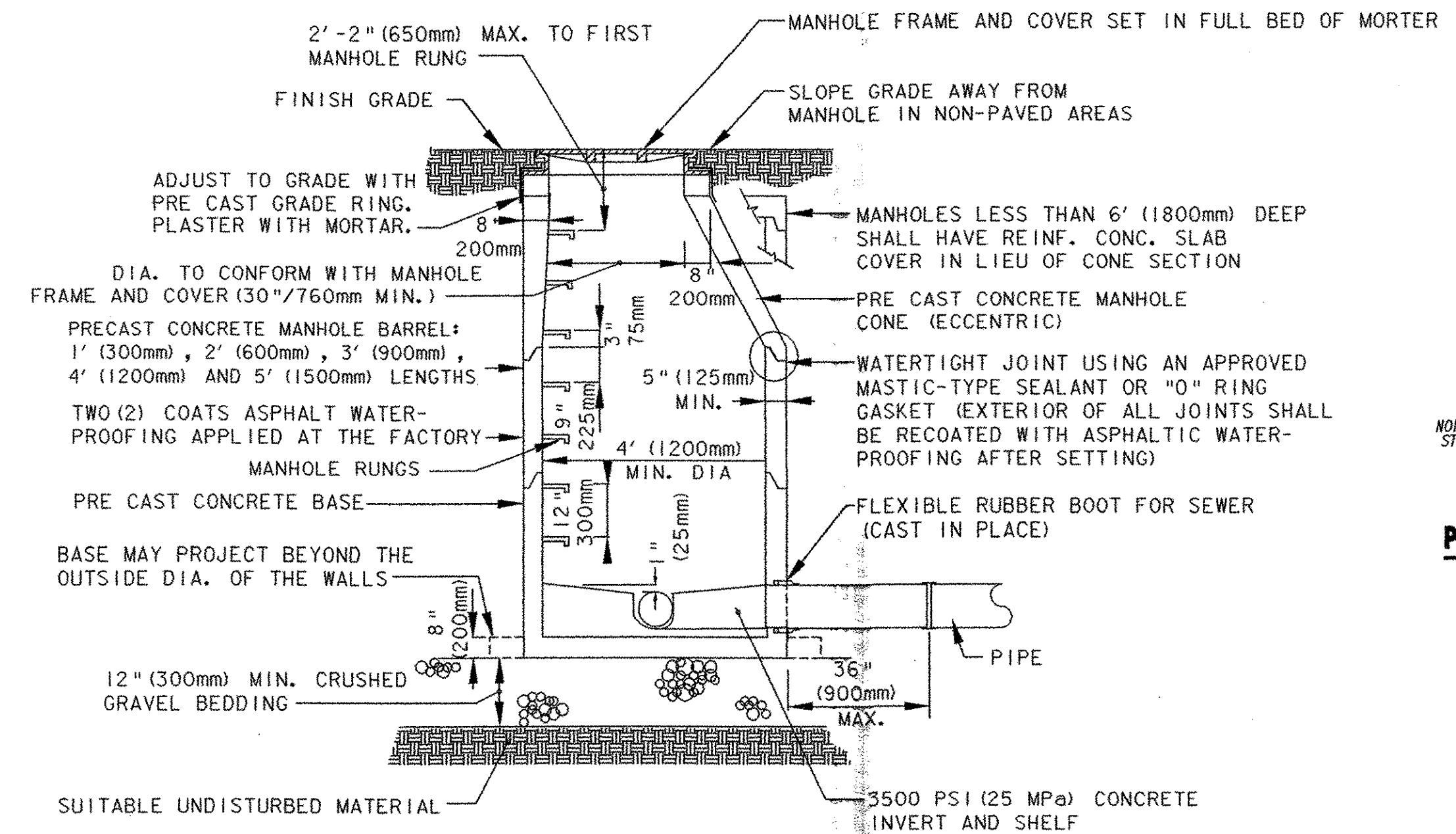


STEEL SLEEVE DETAIL
NOT TO SCALE

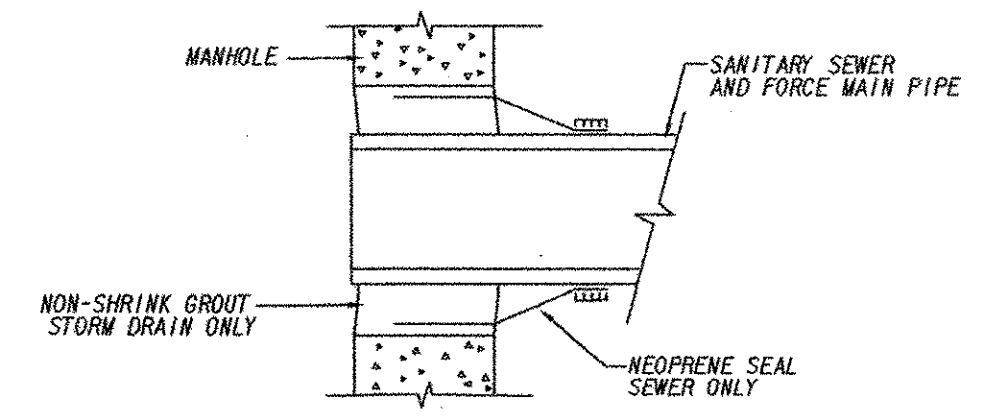


TYPICAL MANHOLE CHANNEL
NOT TO SCALE

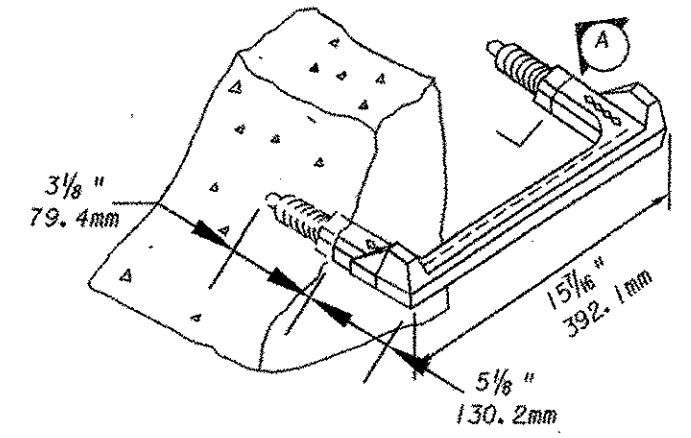
NOTE:
SHELVES CAN BE CONSTRUCTED WITH CLASS B 3500 PSI (25 MPa) CONCRETE AS DEFINED IN SECTION 501 OF THE VERMONT STANDARD SPECIFICATIONS, INVERTS FOR SEWER MANHOLES SHALL BE AS SHOWN THE PLANS AND DETAILS AND SHALL BE CONSTRUCTED WITH CLASS B 3500 PSI (25MPa) C



PRE-CAST CONCRETE MANHOLE
NOT TO SCALE

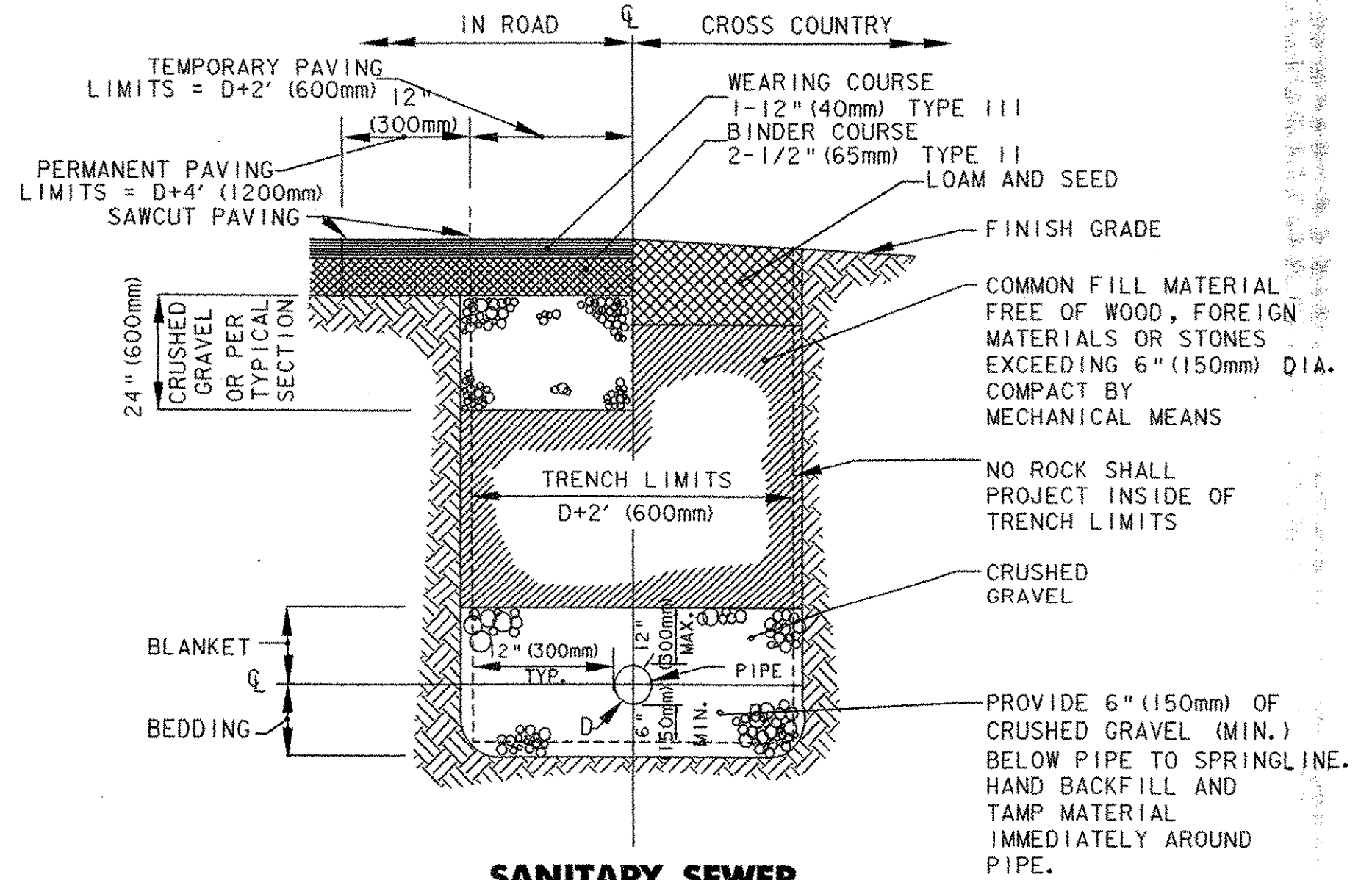


PIPE TO PRE-CAST STRUCTURE DETAIL
NOT TO SCALE

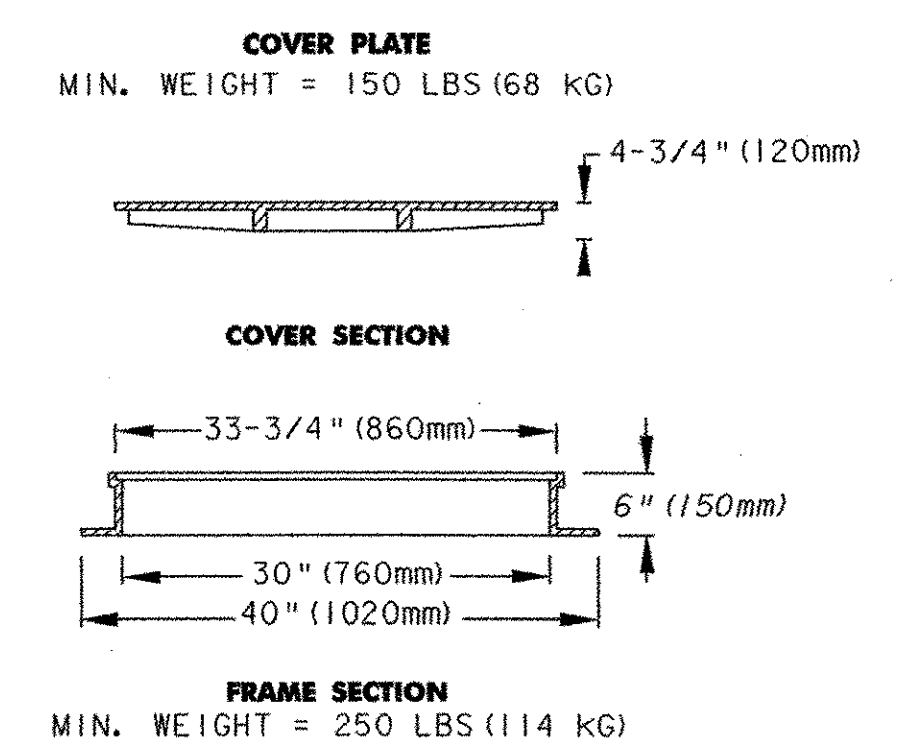
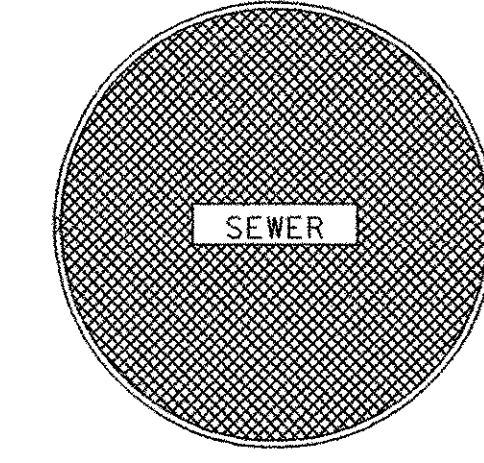


MANHOLE STEP DETAIL
NOT TO SCALE

SECTION A-A
POLYPROPYLENE PLASTIC COATING
1/2" GRADE 60 STEEL REINFORCEMENT



SANITARY SEWER TYPICAL TRENCH DETAIL
NOT TO SCALE



MANHOLE FRAME AND COVER DETAIL
NOT TO SCALE



PROJECT NAME: WATERBURY
PROJECT NUMBER: BRO 1446(26)
FILE NAME: ...63-sewer details.ptf
PROJECT LEADER: A.T. RICE
DESIGNED BY: A.T. RICE
DRAWN BY: B.L. BAKER
CHECKED BY: A.T. RICE
SEWER DETAILS
63 OF 63

6/17/2004 10:19:29 AM