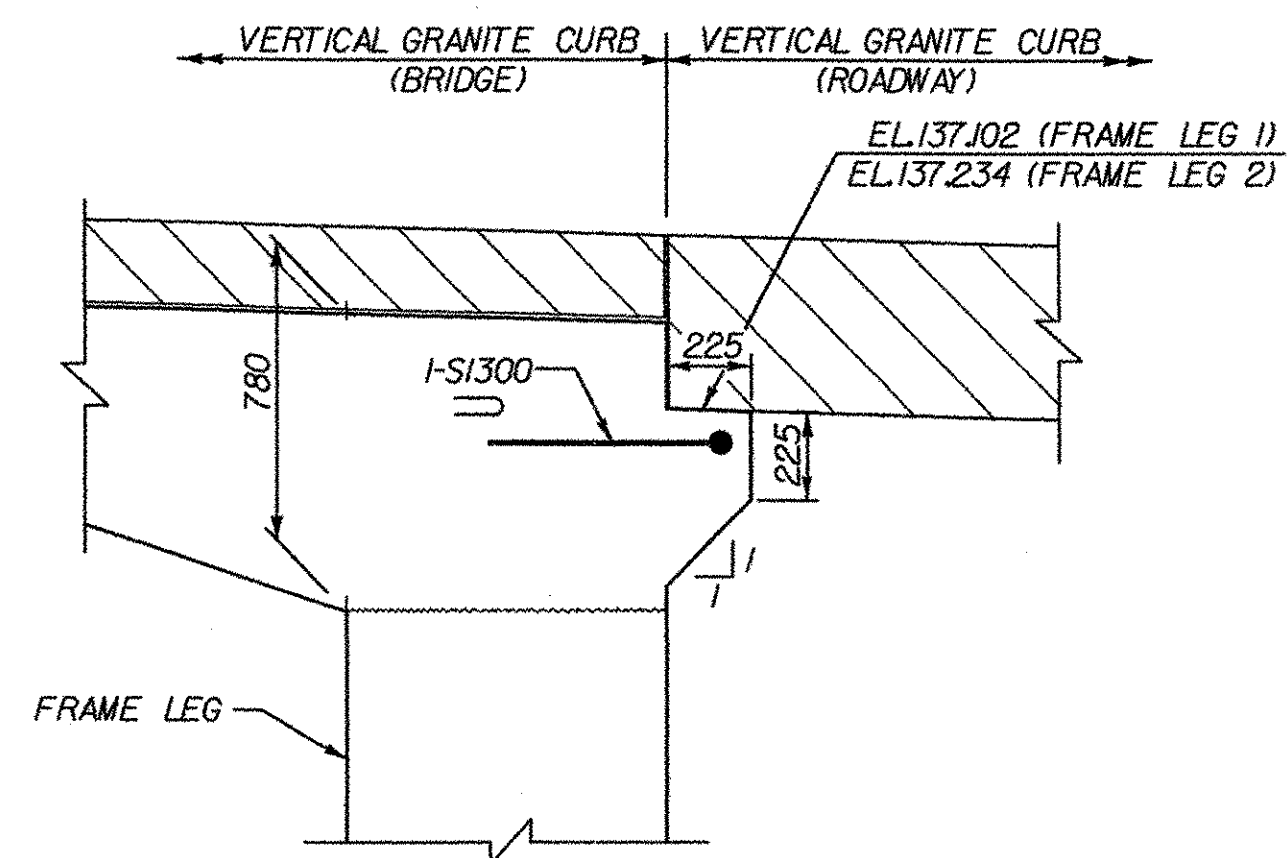
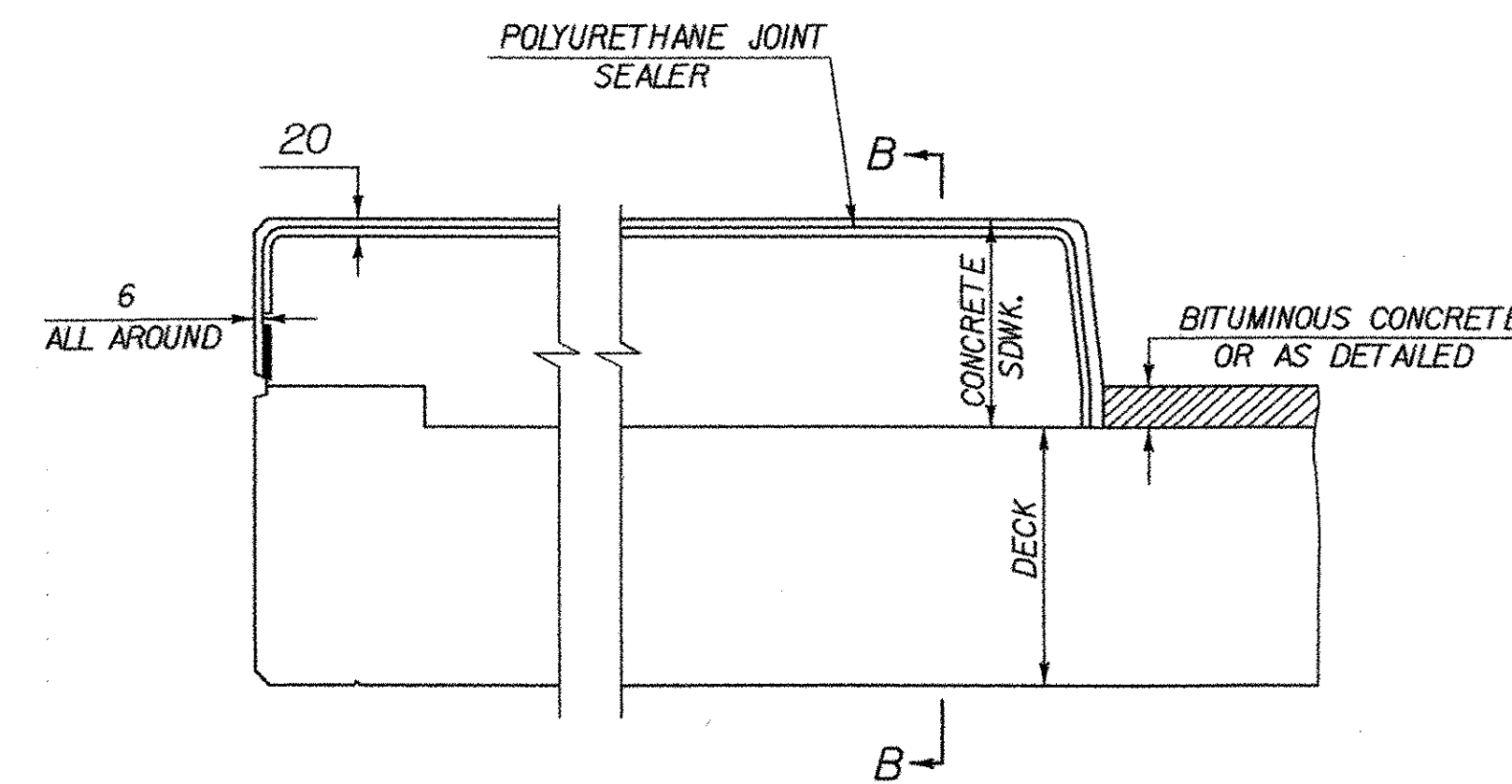


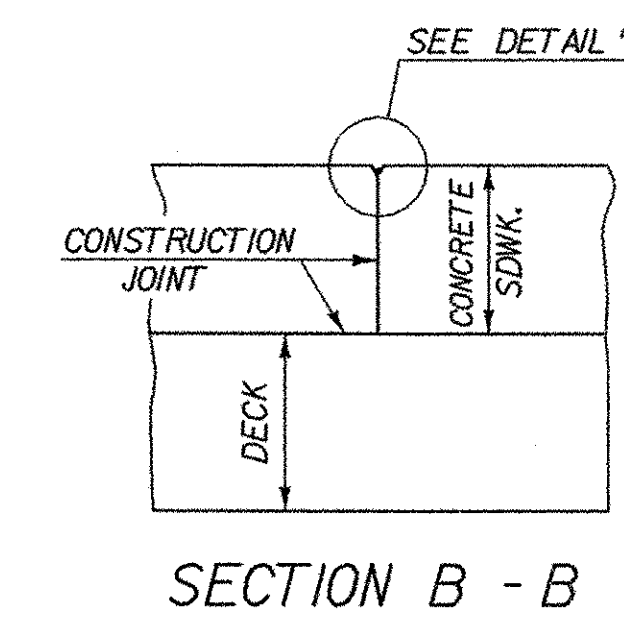
RIGID FRAME DECK REINFORCING PLAN
SCALE 1:50



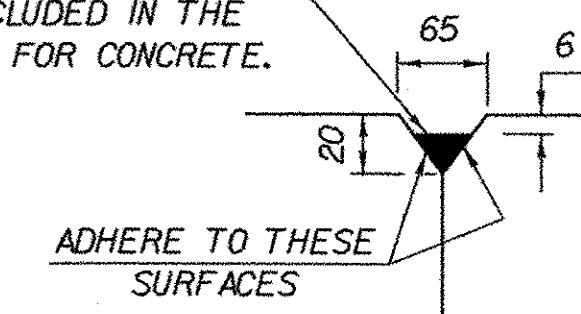
APPROACH CURB SEAT DETAIL
SCALE 1:20



TYPICAL SECTION THROUGH CONCRETE SIDEWALK CONSTRUCTION JOINT



POLYURETHANE JOINT SEALER PER SUBSECTION 524.06C. COLOR TO MATCH CONCRETE. COST TO BE INCLUDED IN THE UNIT PRICE BID FOR CONCRETE.



DETAIL "B"

- NOTES:
1. CONSTRUCTION JOINTS THROUGH CONCRETE SIDEWALK SHALL BE SPACED MAXIMUM 4500 CENTER TO CENTER AND SHALL BE 450 MINIMUM FROM THE CENTER OF THE NEAREST BRIDGE RAIL POST. CONCRETE SHALL BE PLACED IN ALTERNATING SECTIONS WITH A MINIMUM OF 48 HOURS DELAY BETWEEN ADJACENT POURS.
 2. LONGITUDINAL REINFORCING SHALL PASS THROUGH CONCRETE CURB CONSTRUCTION JOINTS.
 3. JOINTS IN GRANITE CURB SHALL BE LOCATED IN LINE WITH CONSTRUCTION JOINTS IN SIDEWALK.

STATE OF VERMONT AGENCY OF TRANSPORTATION

Town Of	WATERBURY	Bridge No.	35
Highway No.		Log Sta.	
		Surv. Sta.	

STOWE ST. BRIDGE OVER CENTRAL VERMONT RAILROAD

DECK PLAN

Designed By	R. GINGRAS	Drawn By	A. THIBAUT
Checked By	Date	Bridge Design Supervisor	Date
T. KNIGHT	3/03		

PROJECT	STOWE STREET	PROJECT NO.	BRO 1446(26)
---------	--------------	-------------	--------------

DH CAD Filename: ...140_ssb_deck.dgn Plot Date: 01/26/2004