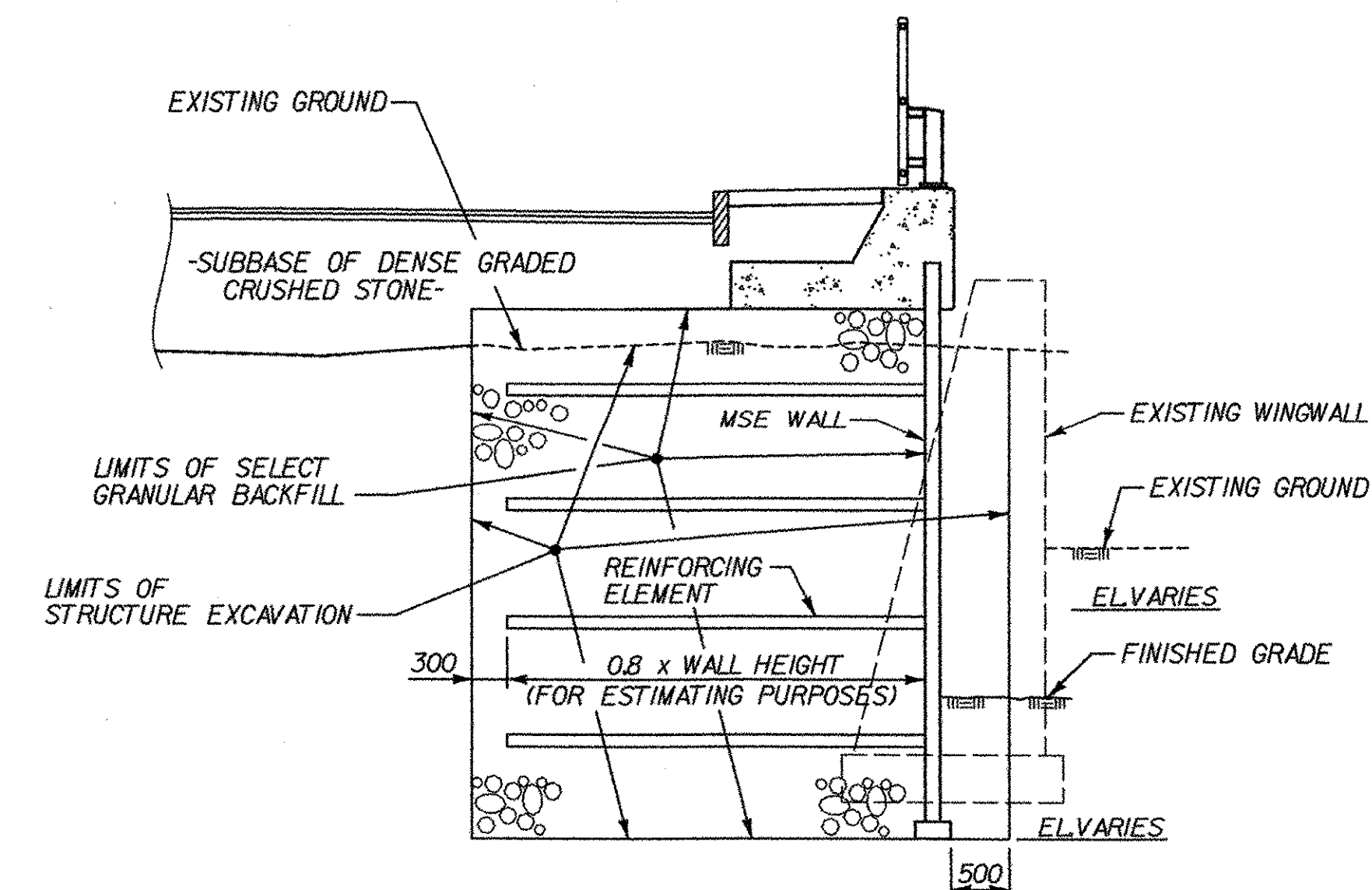
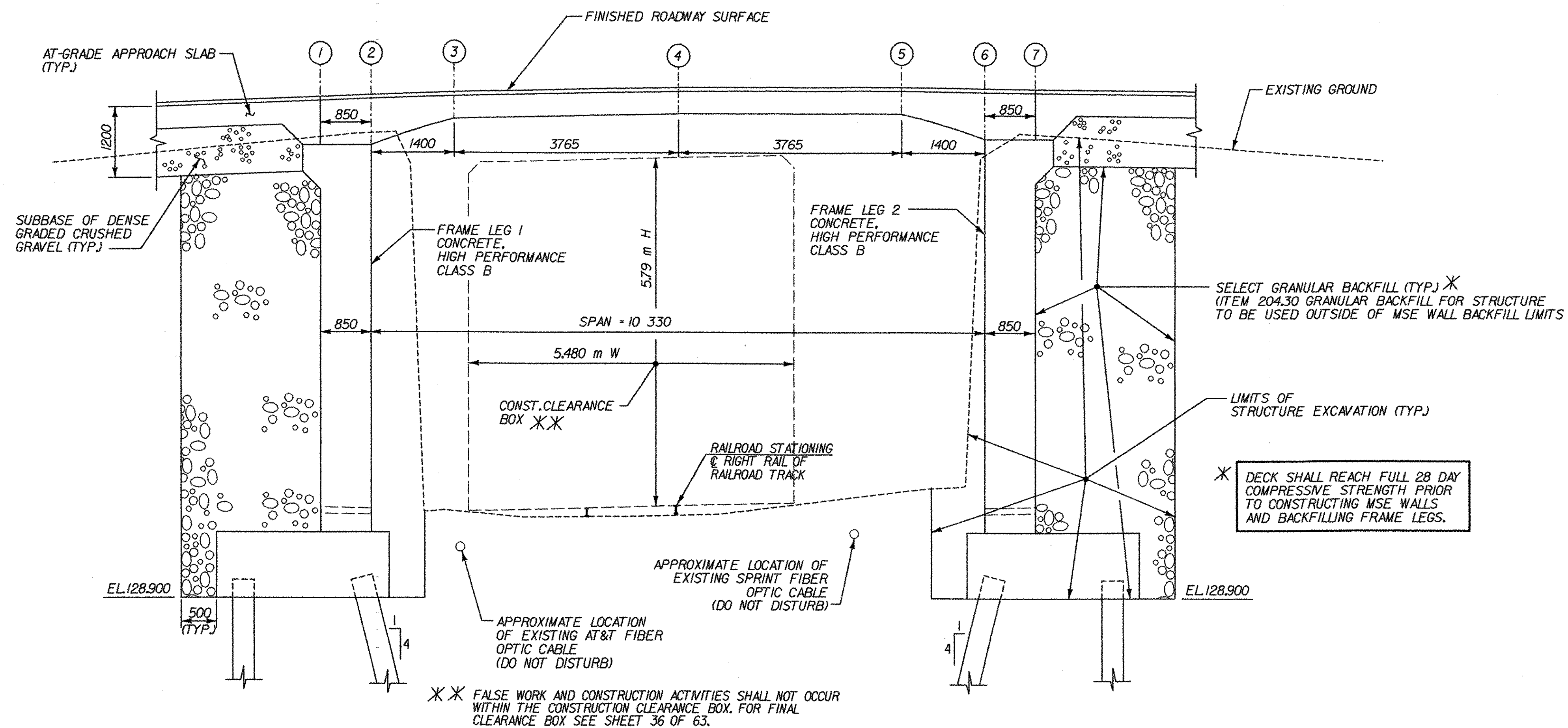


TYPICAL BRIDGE SECTION
SCALE 1:50



PORTIONS OF THE EXISTING WINGWALLS NOT REMOVED UNDER STRUCTURE EXCAVATION SHALL BE REMOVED UNDER ITEM 529J5, REMOVAL OF STRUCTURE (MOD).

TYPICAL WINGWALL EARTHWORK SECTION
SCALE 1:50



TYPICAL FRAME SECTION
SCALE 1:50

	①	②	③	④	⑤	⑥	⑦
STATION	M13.650	M14.500	M15.900	M19.665	M23.430	M24.830	M25.680
CONCRETE DECK THICKNESS (m)	0.746	0.780	0.380	0.380	0.380	0.780	0.765
BOTTOM OF CONCRETE ELEVATION AT BRIDGE FASCIA (m) †	136.470	136.470	136.916	136.993	136.999	136.583	136.583
BOTTOM OF CONCRETE ELEVATION AT @ STONE ST. (m) †	136.597	136.597	137.043	137.120	137.126	136.710	136.710

† ELEVATIONS SHOWN ARE FINAL ELEVATIONS. FORMWORK ELEVATIONS SHOULD BE ADJUSTED TO ACCOUNT FOR DEAD LOAD DEFLECTION OF FORMS.

**STATE OF VERMONT
AGENCY OF TRANSPORTATION**

Town Of	WATERBURY	Bridge No.	35
Highway No.		Log Sta.	
		Surv. Sta.	
STOWE ST. BRIDGE OVER CENTRAL VERMONT RAILROAD			
FRAME AND WINGWALL EARTHWORK SECTIONS			
Designed By	R. GINGRAS	Drawn By	A. THIBAUT
Checked By	G. BOGUE	Date	3/03
		Bridge Design Supervisor	
PROJECT	STOWE STREET	PROJECT NO.	BRO 1446(26)
DH CAD Filename:	...38_ssb_earthwksx.dgn Plot Date: 01/26/2004		
Bridge Sheet No.	BRI02	Sheet	38 of 63