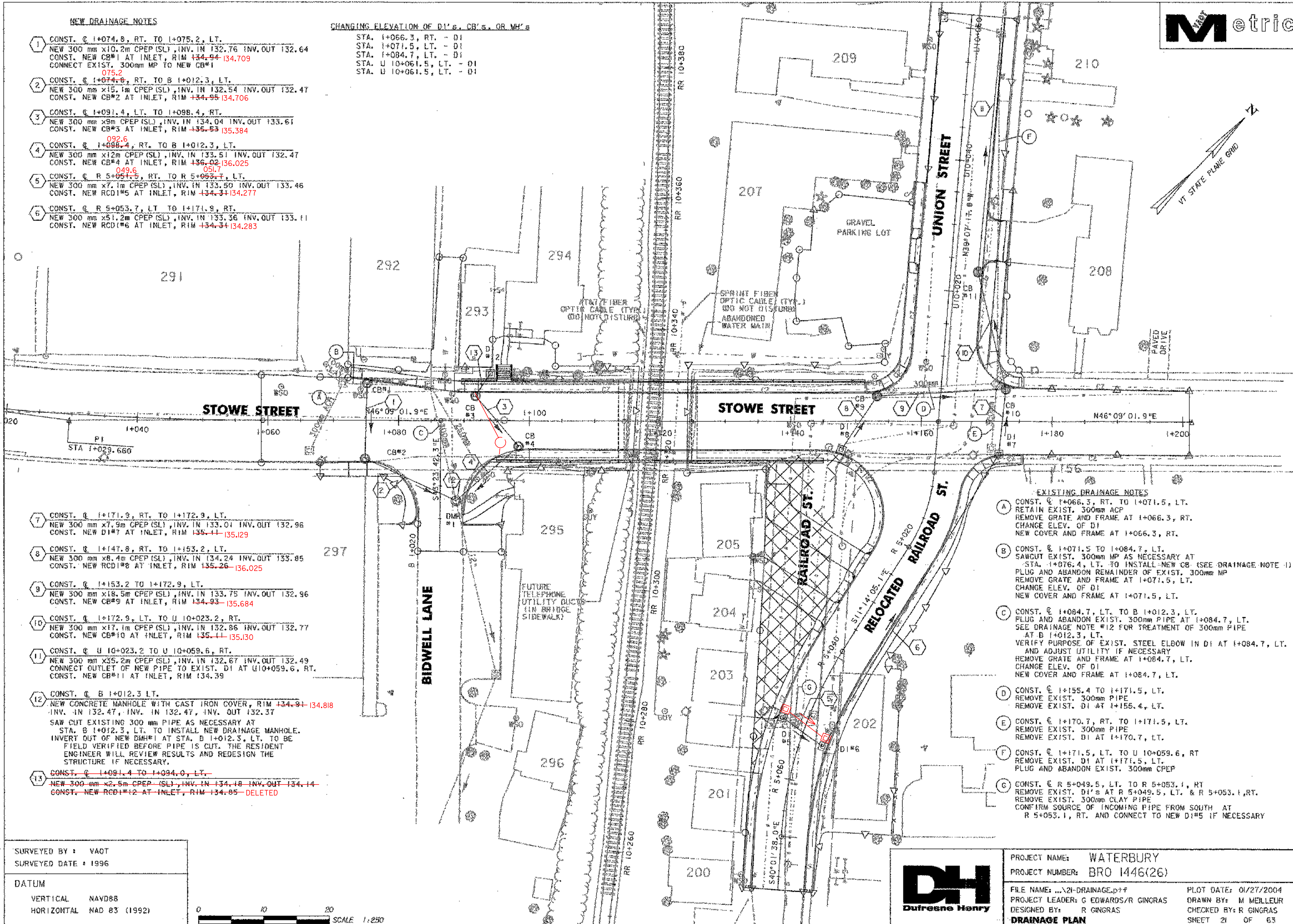


NEW DRAINAGE NOTES

- 1 CONST. C 1+074.8, RT. TO 1+075.2, LT.
NEW 300 mm x10.2m CPEP (SL), INV. IN 132.76 INV. OUT 132.64
CONST. NEW CB#1 AT INLET, RIM 134.94 134.709
CONNECT EXIST. 300mm MP TO NEW CB#1
075.2
- 2 CONST. C 1+074.8, RT. TO B 1+012.3, LT.
NEW 300 mm x15.1m CPEP (SL), INV. IN 132.54 INV. OUT 132.47
CONST. NEW CB#2 AT INLET, RIM 134.95 134.706
- 3 CONST. C 1+091.4, LT. TO 1+098.4, RT.
NEW 300 mm x9m CPEP (SL), INV. IN 134.04 INV. OUT 133.61
CONST. NEW CB#3 AT INLET, RIM 135.53 135.384
- 4 CONST. C 1+098.4, RT. TO B 1+012.3, LT.
NEW 300 mm x12m CPEP (SL), INV. IN 133.51 INV. OUT 132.47
CONST. NEW CB#4 AT INLET, RIM 136.02 136.025
- 5 CONST. C R 5+051.5, RT. TO R 5+053.7, LT.
NEW 300 mm x7.1m CPEP (SL), INV. IN 133.90 INV. OUT 133.46
CONST. NEW RCD#5 AT INLET, RIM 134.34 134.277
- 6 CONST. C R 5+053.7, LT. TO 1+171.9, RT.
NEW 300 mm x51.2m CPEP (SL), INV. IN 133.36 INV. OUT 133.11
CONST. NEW RCD#6 AT INLET, RIM 134.34 134.283

CHANGING ELEVATION OF D.I.'s, CB's, OR MH's

- STA. 1+066.3, RT. - D1
STA. 1+071.5, LT. - D1
STA. 1+084.7, LT. - D1
STA. U 10+061.5, LT. - D1
STA. U 10+061.5, LT. - D1



- 7 CONST. C 1+171.9, RT. TO 1+172.9, LT.
NEW 300 mm x7.9m CPEP (SL), INV. IN 133.01 INV. OUT 132.96
CONST. NEW D1#7 AT INLET, RIM 135.11 135.129
- 8 CONST. C 1+147.8, RT. TO 1+153.2, LT.
NEW 300 mm x8.4m CPEP (SL), INV. IN 134.24 INV. OUT 133.85
CONST. NEW RCD#8 AT INLET, RIM 135.26 136.025
- 9 CONST. C 1+153.2 TO 1+172.9, LT.
NEW 300 mm x18.5m CPEP (SL), INV. IN 133.75 INV. OUT 132.96
CONST. NEW CB#9 AT INLET, RIM 134.93 135.684
- 10 CONST. C 1+172.9, LT. TO U 10+023.2, RT.
NEW 300 mm x17.1m CPEP (SL), INV. IN 132.86 INV. OUT 132.77
CONST. NEW CB#10 AT INLET, RIM 135.11 135.130
- 11 CONST. C U 10+023.2 TO U 10+059.6, RT.
NEW 300 mm x35.2m CPEP (SL), INV. IN 132.67 INV. OUT 132.49
CONNECT OUTLET OF NEW PIPE TO EXIST. D1 AT U10+059.6, RT.
CONST. NEW CB#11 AT INLET, RIM 134.39
- 12 CONST. C B 1+012.3 LT.
NEW CONCRETE MANHOLE WITH CAST IRON COVER, RIM 134.94 134.818
INV. IN 132.47, INV. IN 132.47, INV. OUT 132.37
SAW CUT EXISTING 300 mm PIPE AS NECESSARY AT
STA. B 1+012.3, LT. TO INSTALL NEW DRAINAGE MANHOLE.
INVERT OUT OF NEW DMH#1 AT STA. B 1+012.3, LT. TO BE
FIELD VERIFIED BEFORE PIPE IS CUT. THE RESIDENT
ENGINEER WILL REVIEW RESULTS AND REDESIGN THE
STRUCTURE IF NECESSARY.
- 13 CONST. C 1+091.4 TO 1+094.0, LT.
NEW 300 mm x2.5m CPEP (SL), INV. IN 134.18 INV. OUT 134.14
CONST. NEW RCD#12 AT INLET, RIM 134.85 - DELETED

- EXISTING DRAINAGE NOTES**
- A CONST. C 1+066.3, RT. TO 1+071.5, LT.
RETAIN EXIST. 300mm ACP
REMOVE GRATE AND FRAME AT 1+066.3, RT.
CHANGE ELEV. OF D1
NEW COVER AND FRAME AT 1+066.3, RT.
 - B CONST. C 1+071.5 TO 1+084.7, LT.
SAWCUT EXIST. 300mm MP AS NECESSARY AT
STA. 1+076.4, LT. TO INSTALL NEW CB (SEE DRAINAGE NOTE 1)
PLUG AND ABANDON REMAINDER OF EXIST. 300mm MP
REMOVE GRATE AND FRAME AT 1+071.5, LT.
CHANGE ELEV. OF D1
NEW COVER AND FRAME AT 1+071.5, LT.
 - C CONST. C 1+084.7, LT. TO B 1+012.3, LT.
PLUG AND ABANDON EXIST. 300mm PIPE AT 1+084.7, LT.
SEE DRAINAGE NOTE #12 FOR TREATMENT OF 300mm PIPE
AT B 1+012.3, LT.
VERIFY PURPOSE OF EXIST. STEEL ELBOW IN D1 AT 1+084.7, LT.
AND ADJUST UTILITY IF NECESSARY
REMOVE GRATE AND FRAME AT 1+084.7, LT.
CHANGE ELEV. OF D1
NEW COVER AND FRAME AT 1+084.7, LT.
 - D CONST. C 1+155.4 TO 1+171.5, LT.
REMOVE EXIST. 300mm PIPE
REMOVE EXIST. D1 AT 1+155.4, LT.
 - E CONST. C 1+170.7, RT. TO 1+171.5, LT.
REMOVE EXIST. 300mm PIPE
REMOVE EXIST. D1 AT 1+170.7, LT.
 - F CONST. C 1+171.5, LT. TO U 10+059.6, RT
REMOVE EXIST. D1 AT 1+171.5, LT.
PLUG AND ABANDON EXIST. 300mm CPEP
 - G CONST. C R 5+049.5, LT. TO R 5+053.1, RT
REMOVE EXIST. D1's AT R 5+049.5, LT. & R 5+053.1, RT.
REMOVE EXIST. 300mm CLAY PIPE
CONFIRM SOURCE OF INCOMING PIPE FROM SOUTH AT
R 5+053.1, RT. AND CONNECT TO NEW D1#5 IF NECESSARY

SURVEYED BY: VAOT
SURVEYED DATE: 1996

DATUM
VERTICAL NAVD88
HORIZONTAL NAD 83 (1992)



PROJECT NAME:	WATERBURY		
PROJECT NUMBER:	BRO 1446(26)		
FILE NAME:	...21-DRAINAGE.ppt	PROJECT LEADER:	G EDWARDS/R GINGRAS
DESIGNED BY:	R GINGRAS	DRAWN BY:	M MELLEUR
DRAINAGE PLAN		CHECKED BY:	R GINGRAS
		SHEET	21 OF 63