



VERTICAL GRANITE CURB
 STA. 1+068.0 TO STA. 1+075.6, RT.
 STA. 1+072.6 TO STA. 1+085.0, LT.
 STA. 1+080.0 TO STA. B 1+015.8, RT.
 STA. 1+088.6 TO STA. 1+113.7, LT.
 STA. 1+098.0 TO STA. 1+113.7, RT.
 STA. 1+125.7 TO STA. 1+155.8, LT.
 STA. 1+125.7 TO STA. 1+149.6, RT.
 STA. 1+169.0 TO STA. 1+175.3, RT.
 STA. 1+171.4 TO STA. 1+175.4, LT.
 STA. B 1+014.3, LT TO STA. 1+094.4, RT.
 STA. R 5+007.1 TO STA. R 5+077.0, LT.
 STA. R 5+007.8 TO STA. R 5+024.0, RT.
 STA. R 5+028.3 TO STA. R 5+033.0, RT.
 STA. R 5+037.1 TO STA. R 5+051.9, RT.
 STA. R 5+060.0 TO STA. R 5+077.0, RT.
 STA. U 10+006.0 TO STA. U 10+023.2, LT.
 STA. U 10+008.3 TO STA. U 10+024.8, RT.
 STA. U 10+027.6 TO STA. U 10+036.0, LT.
 STA. U 10+031.2 TO STA. U 10+060.0, RT.

REMOVAL OF EXISTING CURB
 STA. 1+068.0 TO STA. B 1+015.8, RT.
 STA. 1+072.6 TO STA. 1+092.6, LT.
 STA. 1+151.4 TO STA. U 10+036.0, LT.
 STA. 1+156.4 TO STA. 1+175.3, RT.
 STA. R 1+015.8, LT.
 STA. B 1+017.3, LT. TO STA. 1+099.3, RT.
 STA. R 5+077.0, LT. TO STA. 1+150.6, RT.
 STA. U 10+062.0, RT. TO STA. 1+175.4, LT.

REMOVAL OF EXISTING FENCE
 STA. 1+099.8 TO 1+151.2, LT.
 STA. 1+099.9 TO 1+136.2, RT.
 STA. R 5+064.2 TO R 5+068.0, LT.

CHAIN LINK FENCE, 1.2 M
 STA. R 5+049.7 TO R 5+068.0, LT.

CAST-IN-PLACE CEMENT CONCRETE CURB, TYPE B
 STA. B 1+015.8, LT.

REMOVING MEDIUM TREES
 STA. 1+092.2, RT.
 STA. 1+099.7, LT.
 STA. 1+102.4, LT.
 STA. 1+107.6, LT.
 STA. 1+110.6, LT.
 STA. 1+131.9, LT.
 STA. 1+133.7, LT.
 STA. R 5+049.2, LT.
 STA. R 5+059.8, LT.

DECIDUOUS TREES
 STA. B 1+012.0, LT.

Stowe St. Curve 1
 Delta 7°33'49.5"
 R=448.695
 T=29.660
 L=59.233
 E=0.979

BEGIN PROJECT
END APPROACH
BRO 1446 (26)
STA. 1+090.000

STOP ROADWAY
BEGIN BRIDGE
STA. 1+113.650

END BRIDGE
RESUME ROADWAY
STA. 1+125.680

BEGIN APPROACH
BRO 1446 (26)
STA. 1+059.000

CONSTRUCT DRIVE
 STA. 1+087.0 LT. 3.3 m PAVED
 STA. 1+179.0 RT. 2.8 m GRAVEL
 STA. U10+027.0 RT. 6.3 m PAVED
 STA. U10+025.0 LT. 3.6 m GRAVEL
 STA. R5+026.0 RT. 3.6 m PAVED
 STA. R5+035.0 RT. 3.6 m PAVED
 STA. R5+055.0 RT. 4.6 m PAVED
 STA. R5+058.0 RT. 3.8 m GRAVEL

CONSTRUCT SIDEWALK RAMP TYPE I
(SEE V.A.O.T. STD. C-3A)
 STA. 1+073.5, LT.
 STA. 1+077.0, RT.
 STA. 1+084.0, LT.
 STA. 1+089.5, LT.
 STA. 1+097.0, RT.

CONSTRUCT SIDEWALK RAMP TYPE VI
(SEE V.A.O.T. STD. C-3B)
 STA. 1+150.2 RT.
 STA. 1+156.4 LT.
 STA. 1+169.1 RT.
 STA. 1+170.6 LT.

PORTLAND CEMENT CONCRETE SIDEWALK, 125 mm
 STA. 1+068.0 TO 1+080.0, RT.
 STA. 1+072.6 TO 1+107.7, LT.
 STA. 1+094.4 TO 1+107.7, RT.
 STA. 1+095.7 TO 1+102.3, LT.
 STA. 1+131.7 TO R 5+077.0, RT.
 STA. 1+131.7 TO U10+036.0, LT.
 STA. R 5+077.0, LT. TO 1+175.3, RT.
 STA. U10+036.0, RT. TO 1+175.4, LT.

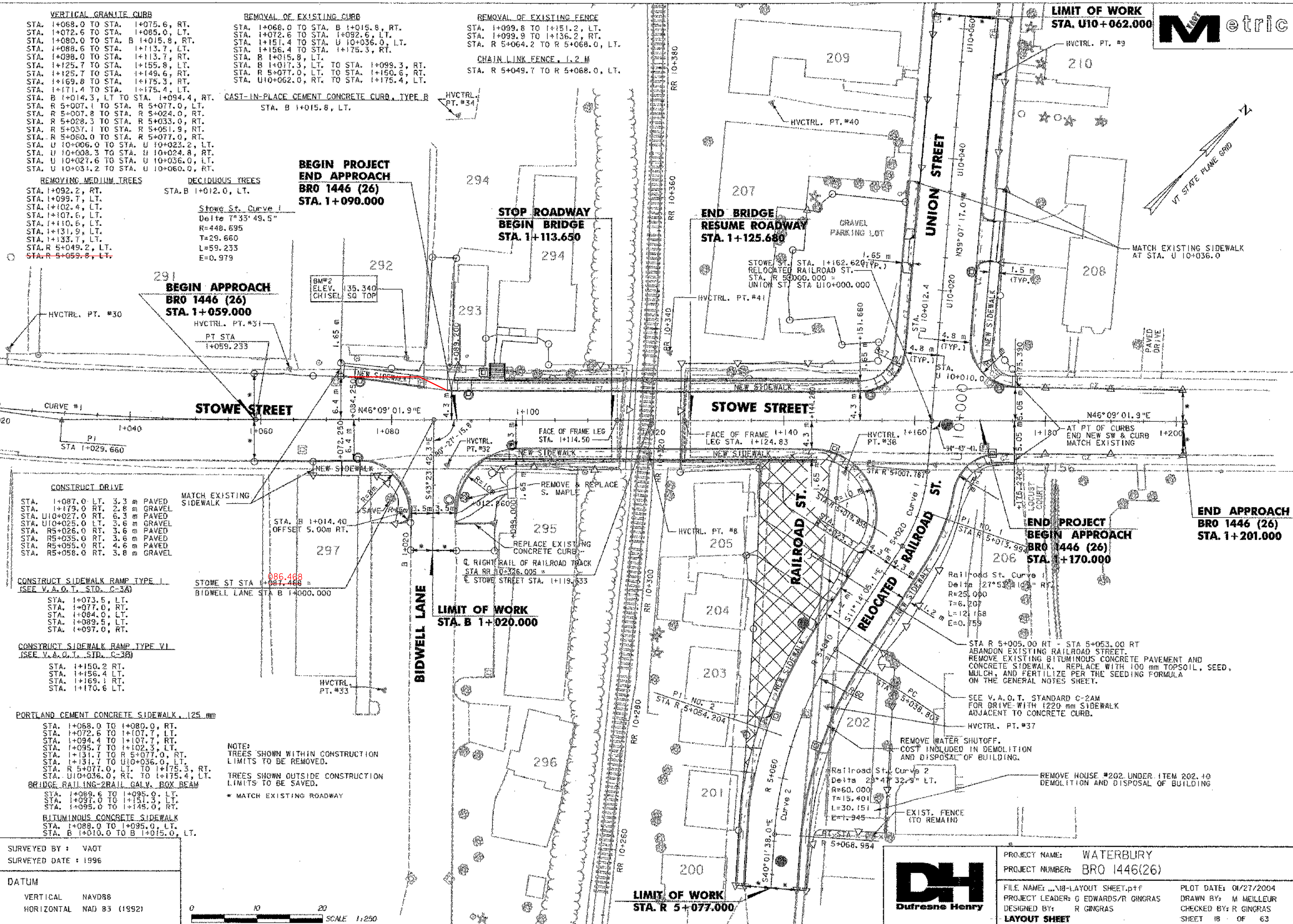
BRIDGE RAILING-2RAIL GALV. BOX BEAM
 STA. 1+089.6 TO 1+095.0, LT.
 STA. 1+097.0 TO 1+151.3, LT.
 STA. 1+095.0 TO 1+145.0, RT.

BITUMINOUS CONCRETE SIDEWALK
 STA. 1+088.0 TO 1+095.0, LT.
 STA. B 1+010.0 TO B 1+015.0, LT.

NOTE:
 TREES SHOWN WITHIN CONSTRUCTION LIMITS TO BE REMOVED.
 TREES SHOWN OUTSIDE CONSTRUCTION LIMITS TO BE SAVED.
 * MATCH EXISTING ROADWAY

SURVEYED BY : VAOT
SURVEYED DATE : 1996

DATUM
 VERTICAL NAVD88
 HORIZONTAL NAD 83 (1992)



END PROJECT
BEGIN APPROACH
BRO 1446 (26)
STA. 1+170.000

LIMIT OF WORK
STA. R 5+077.000



PROJECT NAME: WATERBURY
PROJECT NUMBER: BRO 1446(26)

FILE NAME: ... \18-LAYOUT SHEET.p1f
PROJECT LEADER: G EDWARDS/R GINGRAS
DESIGNED BY: R GINGRAS
LAYOUT SHEET

PLOT DATE: 01/27/2004
DRAWN BY: M MELLEUR
CHECKED BY: R GINGRAS
SHEET 18 OF 63