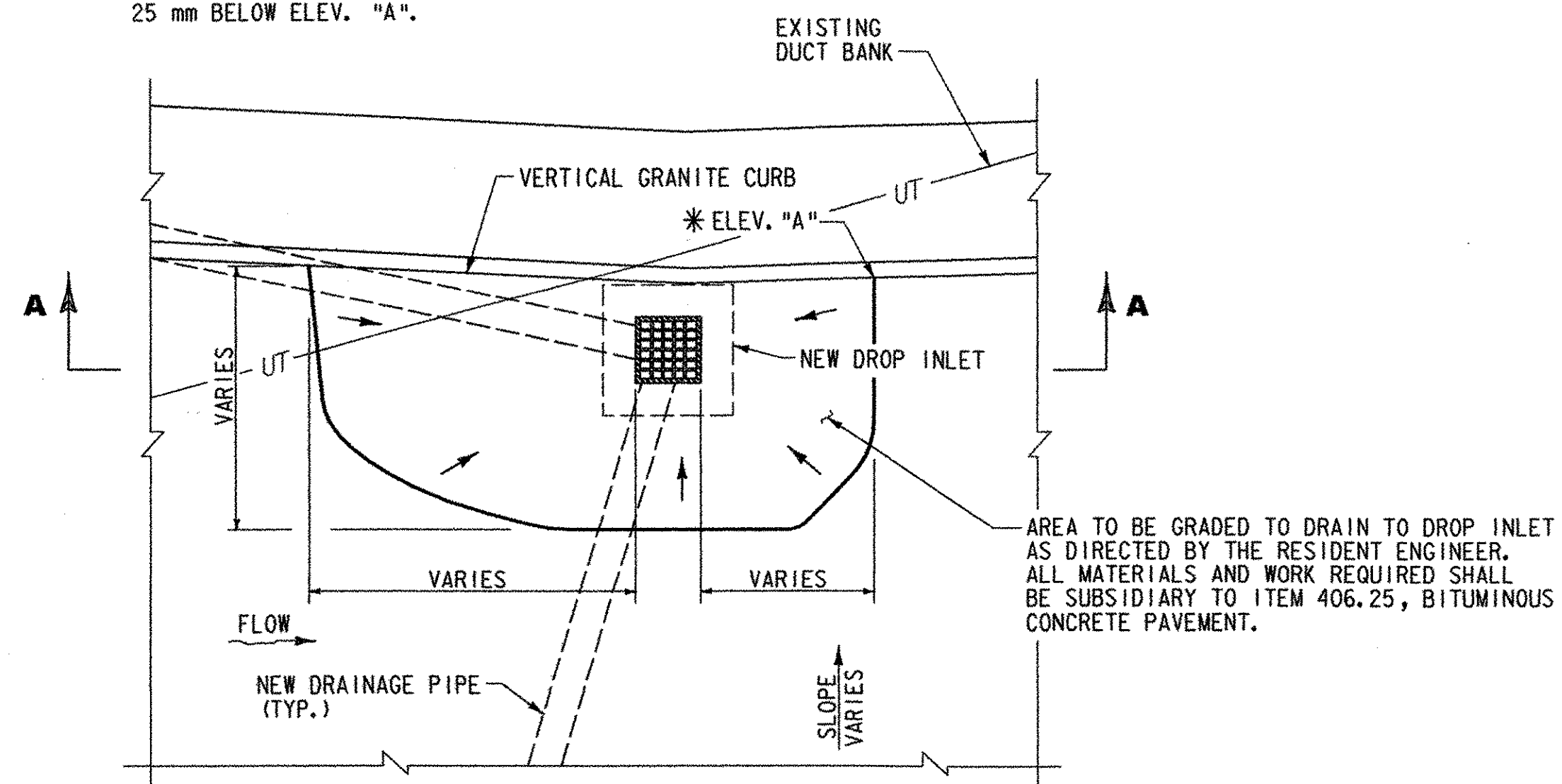
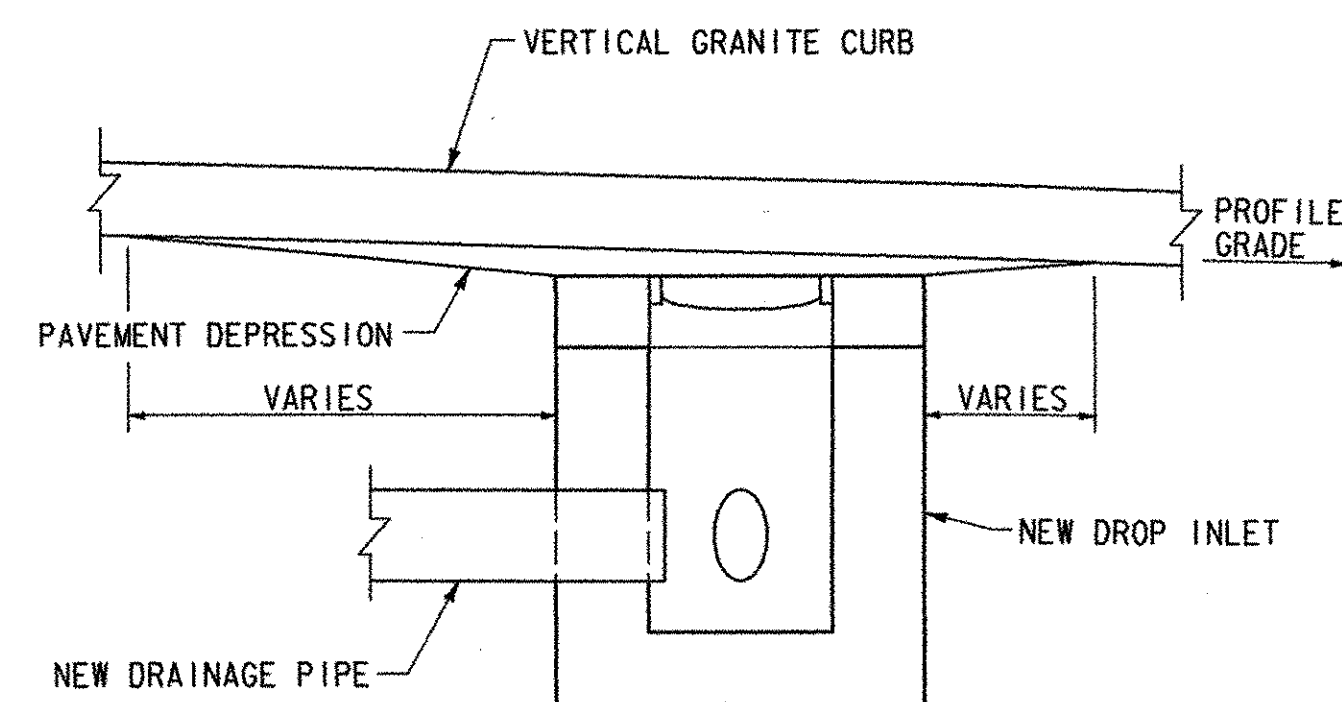


* TOP OF GRATE ELEVATION SHALL BE 25 mm BELOW ELEV. "A".



PLAN



SECTION A-A

DRAINAGE STRUCTURE SPECIAL GRADING DETAIL

NOT TO SCALE

ROADWAY NOTES

1. ALL ASPHALT CEMENT USED IN THE BITUMINOUS CONCRETE PAVEMENT SHALL BE PG 58-34.
2. EMULSIFIED ASPHALT SHALL BE APPLIED ON EXISTING PAVEMENT SURFACES, BETWEEN ALL COURSES OF PAVEMENT AND ON COLD PLANED SURFACES, AT THE RATE OF 0.12 L/m² OR AS DIRECTED BY THE ENGINEER. EMULSIFIED ASPHALT SHALL BE APPLIED ON BRIDGE PAVEMENT SURFACES, AT A RATE OF 0.07 L/m² OR AS DIRECTED BY THE ENGINEER.
3. COLD PLANING TO BE COMPLETED ACCORDING TO TYPICAL OR AS NOTED OTHERWISE ON THE PLANS. THE COLD PLANING AND PAVING SHALL MATCH THE EXISTING CONDITIONS AT THE BEGINNING AND END OF CONSTRUCTION AREAS BY THE USE OF A VERTICAL BUTT JOINT. SEE DETAIL ON SHEET 3.
4. CONTRACTOR TO VERIFY THE LOCATIONS AND DEPTHS OF EXISTING UTILITIES AND REVIEW FINDINGS WITH THE RESIDENT ENGINEER. THIS INFORMATION WILL BE COMPARED WITH THE ASSUMED LOCATIONS SHOWN IN SECTION AND RE-DESIGN OF DRAINAGE INLETS AND OUTLETS MAY BE REQUIRED.

SEEDING FORMULA
URBAN AREAS

% MASS	kg/ha	NAME	PUR %	GERM %
42.5	38.0	CREeping RED FESCUE	98	85
10.0	9.0	PERENNIAL RYE GRASS	95	90
42.5	38.0	KENTUCKY BLUE GRASS	85	85
5.0	5.0	ANNUAL RYE GRASS	95	85
100.0	90.0			

GENERAL NOTES

SEED MIXTURE: SHALL NOT HAVE A WEED CONTENT EXCEEDING 0.40% BY MASS AND SHALL BE FREE OF ALL NOXIOUS SEED.

SEED: TO BE APPLIED PER SEEDING FORMULAS OR AS DIRECTED BY THE ENGINEER.

FERTILIZER: FORMULA 10-20-10, TO BE USED WITH SEED, APPLIED AT THE RATE OF 560 kg/ha. (HYDRO SEEDERS MAY USE 19-19-19 FORMULA).

AGRICULTURAL LIMESTONE: TO BE APPLIED AT THE RATE OF 4500 kg/ha, OR AS DIRECTED BY THE ENGINEER.

HAY MULCH: TO BE PLACED ON EARTH SLOPES AT THE RATE OF 4500 kg/ha, OR AS DIRECTED BY THE ENGINEER.

TOPSOIL: TO BE USED WITH SEED AS INDICATED ON THE PLANS, OR AS DIRECTED BY THE ENGINEER.

SLOPE ROUNDING: ALL CUT SLOPES TO BE ROUNDED IN ACCORDANCE WITH STANDARD SHEET B-5M AS DIRECTED BY THE ENGINEER.

PROJECT NAME: WATERBURY
PROJECT NUMBER: BRO 1446(26)

FILE NAME: ...N3-generalnotes.ptf PLOT DATE: 01/26/2004
PROJECT LEADER: G EDWARDS/R GINGRAS DRAWN BY: M MEILLEUR
DESIGNED BY: M MEILLEUR CHECKED BY: R GINGRAS
GENERAL NOTES SHEET 13 OF 63