

INDEX OF SHEETS

SEE SHEET 2

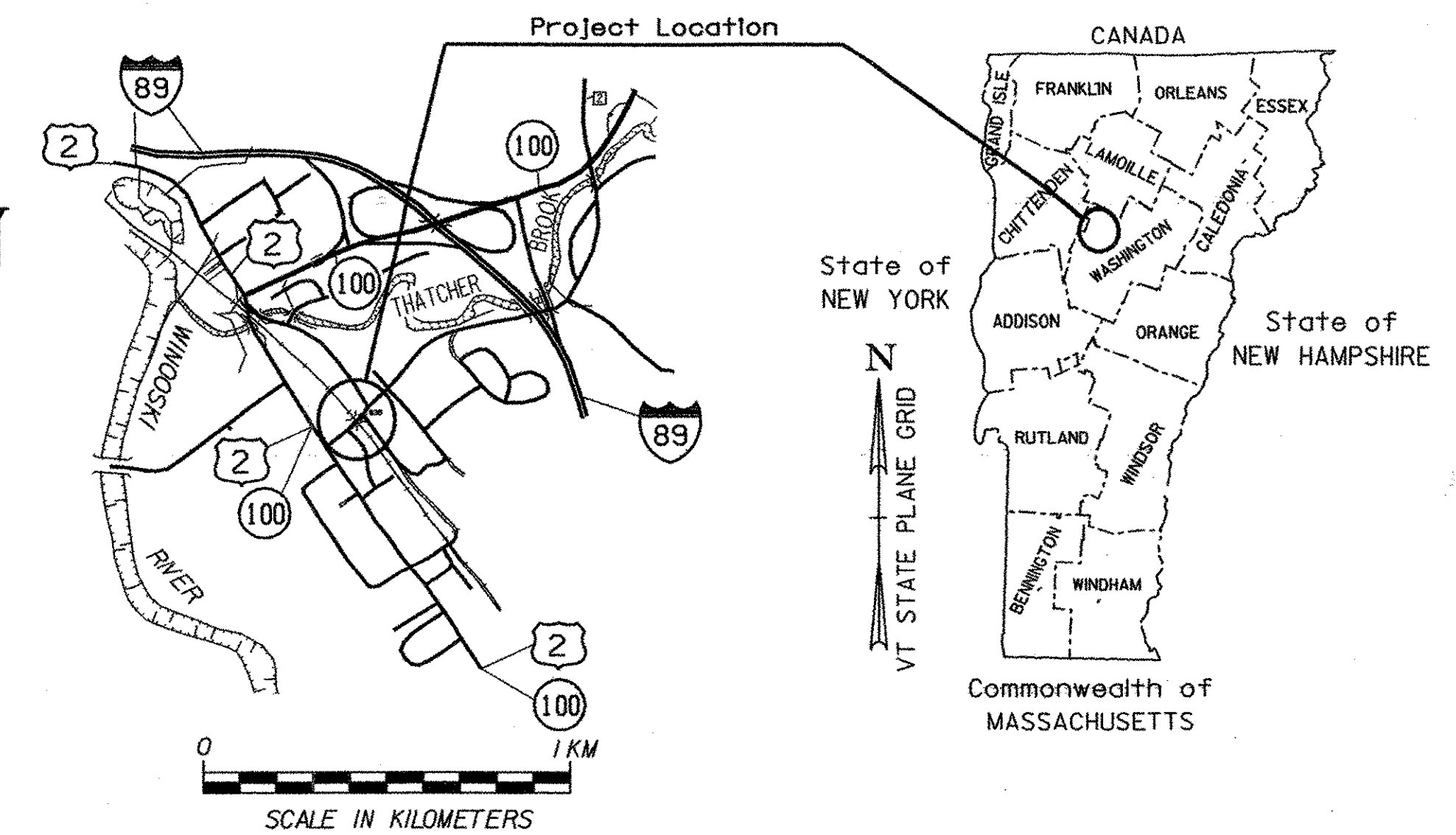
STATE OF VERMONT
AGENCY OF TRANSPORTATION



PROPOSED IMPROVEMENT
TOWN OF WATERBURY
COUNTY OF WASHINGTON
STOWE STREET, BRIDGE 35 (LOCAL ROAD)

BEGINNING AT A POINT APPROXIMATELY 0.059 KILOMETERS NORTHEAST OF THE U.S. ROUTE 2/VT. ROUTE 100 AND TOWN HIGHWAY #2 INTERSECTION, AND EXTENDING NORTHEASTERLY 0.080 KILOMETERS ON TOWN HIGHWAY #2.
WORK TO BE PERFORMED UNDER THIS PROJECT INCLUDES THE REMOVAL OF THE EXISTING BRIDGE SUPERSTRUCTURE AND ABUTMENTS, RELOCATION OF RAILROAD STREET, CONSTRUCTION OF THE NEW BRIDGE SUPERSTRUCTURE, ABUTMENTS, ROADWAY APPROACHES, SIDEWALKS, CURBING, DRAINAGE, AND INCIDENTAL ITEMS.

PROJECT DATA	LENGTH (M)	LENGTH (KM)
LENGTH OF ROADWAY	67.97	0.068
LENGTH OF BRIDGE	12.03	0.012
LENGTH OF PROJECT	80.00	0.080



RECORD PLANS

CONTRACTOR: AUSTIN CONSTRUCTION CO., INC. - CONCORD, VT

RESIDENT ENGINEER: RON STANCLIFF

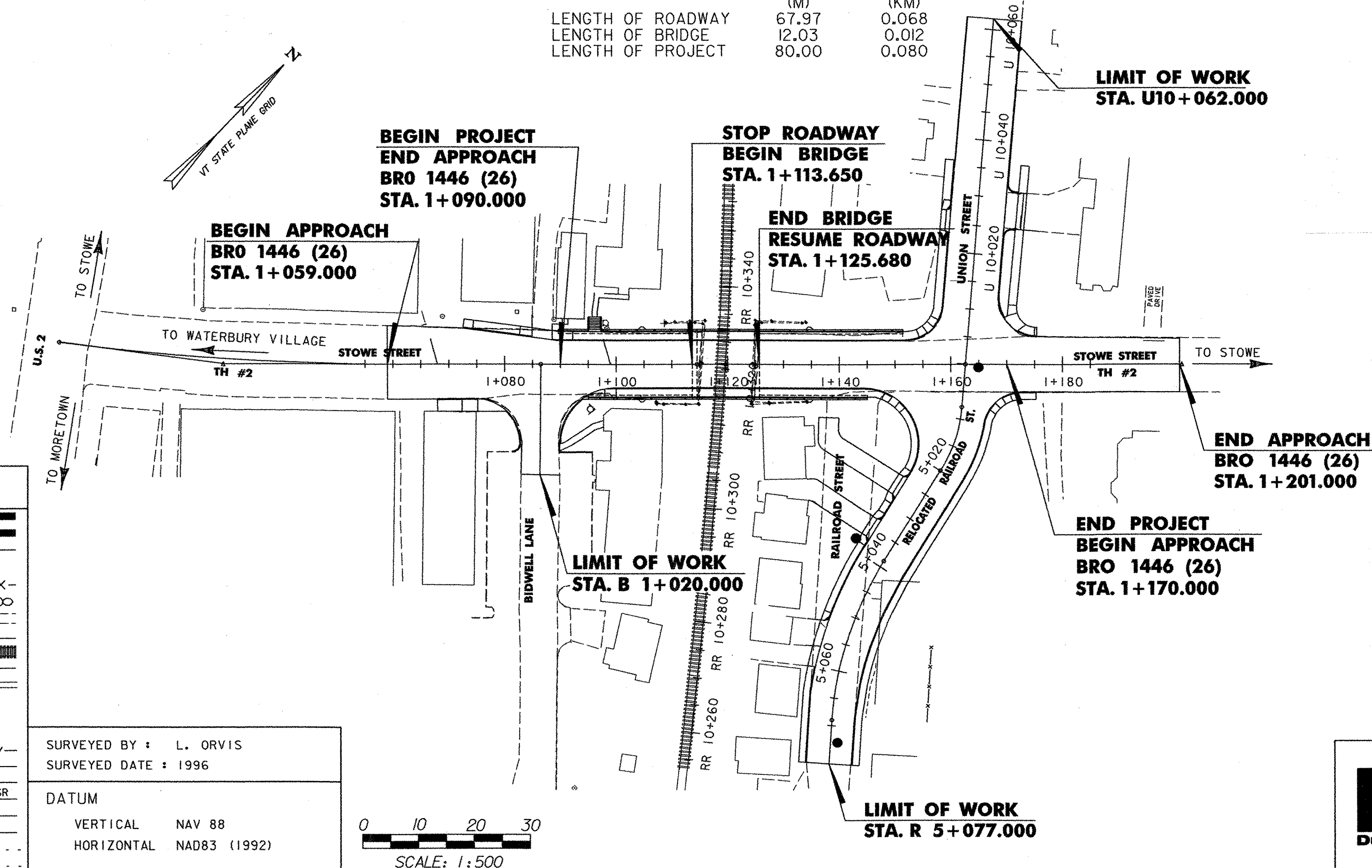
CONSTRUCTION BEGAN: MAY 26, 2004

CONSTRUCTION COMPLETE: NOVEMBER 14, 2006

RECORD PLANS BY: RON STANCLIFF & C. PIERCE

I HEREBY CERTIFY THAT ALL THE CONSTRUCTION REQUIRED BY THIS SET OF DRAWINGS HAS BEEN ACCOMPLISHED AS INDICATED HEREIN.
BY Ronald L. Stancliff RESIDENT ENGINEER
DATE 3/9/07

NOTE: Any further information concerning final quantities, amounts or other details relative to this project may be found at Central Files in the electronic archives.

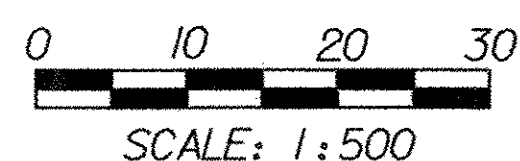


CONVENTIONAL SYMBOLS

COUNTY LINE	
TOWN LINE	
LIMITS OF ACCESS	
POINT OF ACCESS	
FENCE LINE	
STONE WALL	
TRAVELED WAY	
GUARD RAIL	
RAILROAD	
SURVEY LINE	
CULVERT	
POWER POLE	
TELEPHONE POLE	
TREES	
CONTROL OF ACCESS	
PROPERTY LINE	
R.O.W. TAKING LINE	
SLOPE RIGHTS	
TOP OF CUT	
TOE OF SLOPE	
UNDERGROUND TELEPHONE	
UNDERGROUND ELECTRIC	

SURVEYED BY : L. ORVIS
SURVEYED DATE : 1996

DATUM
VERTICAL NAV 88
HORIZONTAL NAD83 (1992)



THESE PLANS ARE SUBJECT TO SUCH ENGINEERING CHANGES AS MAY BE REQUIRED BY THE FEDERAL HIGHWAY ADMINISTRATION OR THE DIRECTOR OF PROGRAM DEVELOPMENT.
CONSTRUCTION IS TO BE CARRIED ON IN ACCORDANCE WITH THESE PLANS AND THE STANDARD SPECIFICATIONS FOR CONSTRUCTION DATED 2001, AS APPROVED BY THE FEDERAL HIGHWAY ADMINISTRATION ON JANUARY 4, 2001 FOR USE ON THIS PROJECT, INCLUDING ALL SUBSEQUENT REVISIONS AND SUCH REVISED SPECIFICATIONS AND SPECIAL PROVISIONS AS ARE INCORPORATED IN THESE PLANS.



UNLESS NOTED OTHERWISE
STATIONS ARE IN KILOMETERS
ELEVATIONS ARE IN METERS
DIMENSIONS ARE IN MILLIMETERS

DH
Dufresne-Henry

DIRECTOR OF PROGRAM DEVELOPMENT
APPROVED [Signature] DATE 2/14/04

PROJECT MANAGER : CHRIS WILLIAMS

PROJECT NAME : WATERBURY
PROJECT NUMBER : BRO 1446 (26)

SHEET 1 OF 63 SHEETS