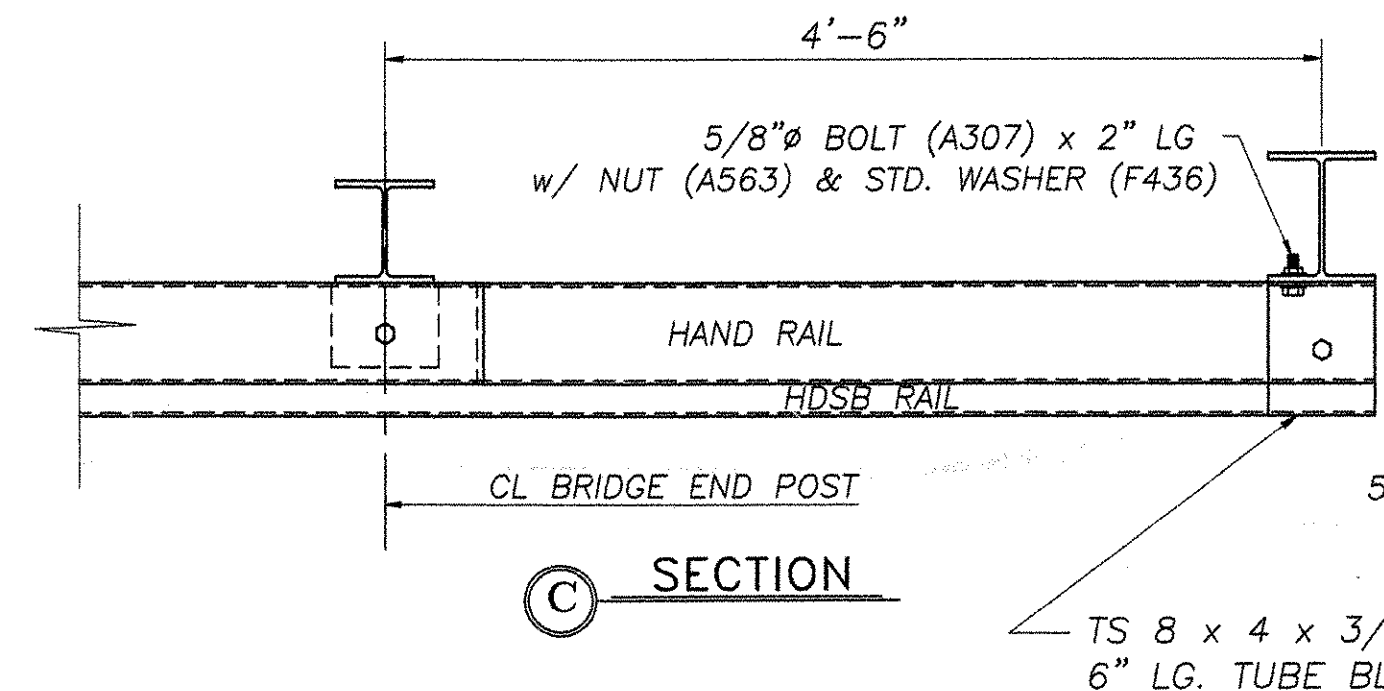
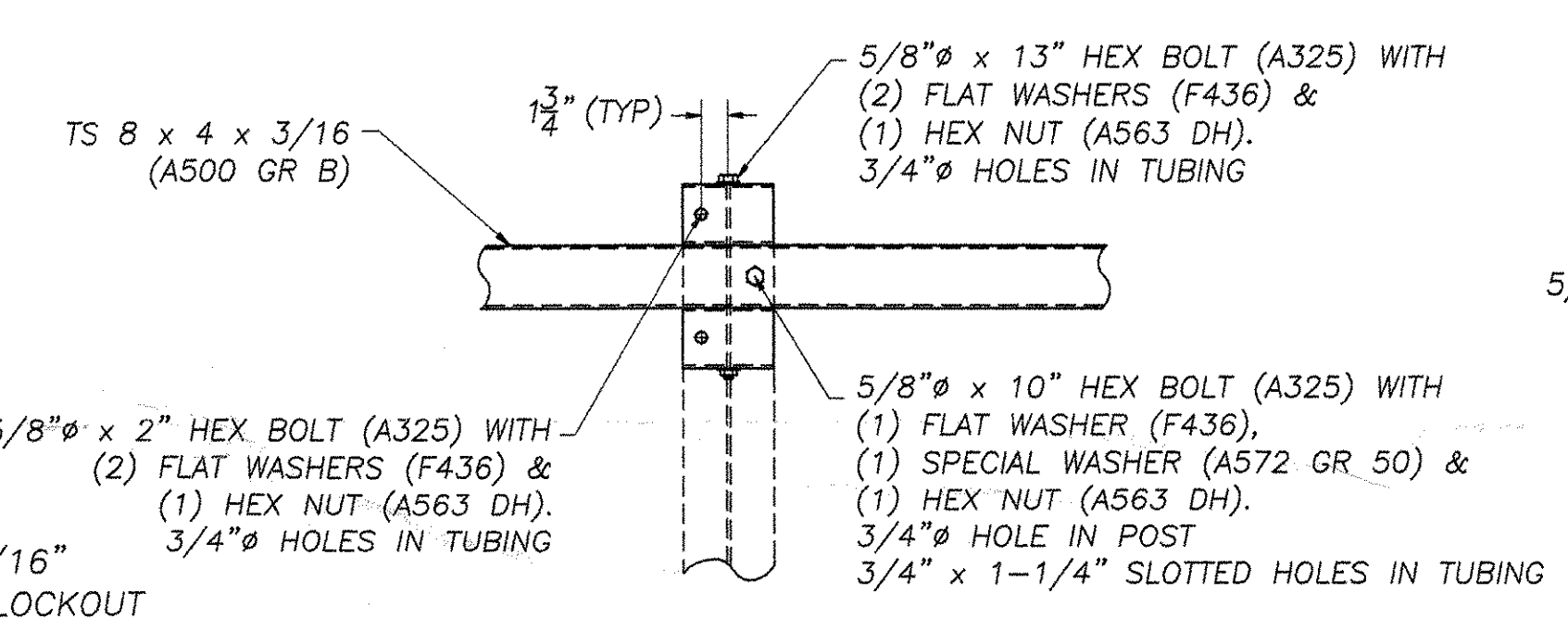


RAILING ELEVATION VIEW
(SHOWN LOOKING FROM C OF ROADWAY)

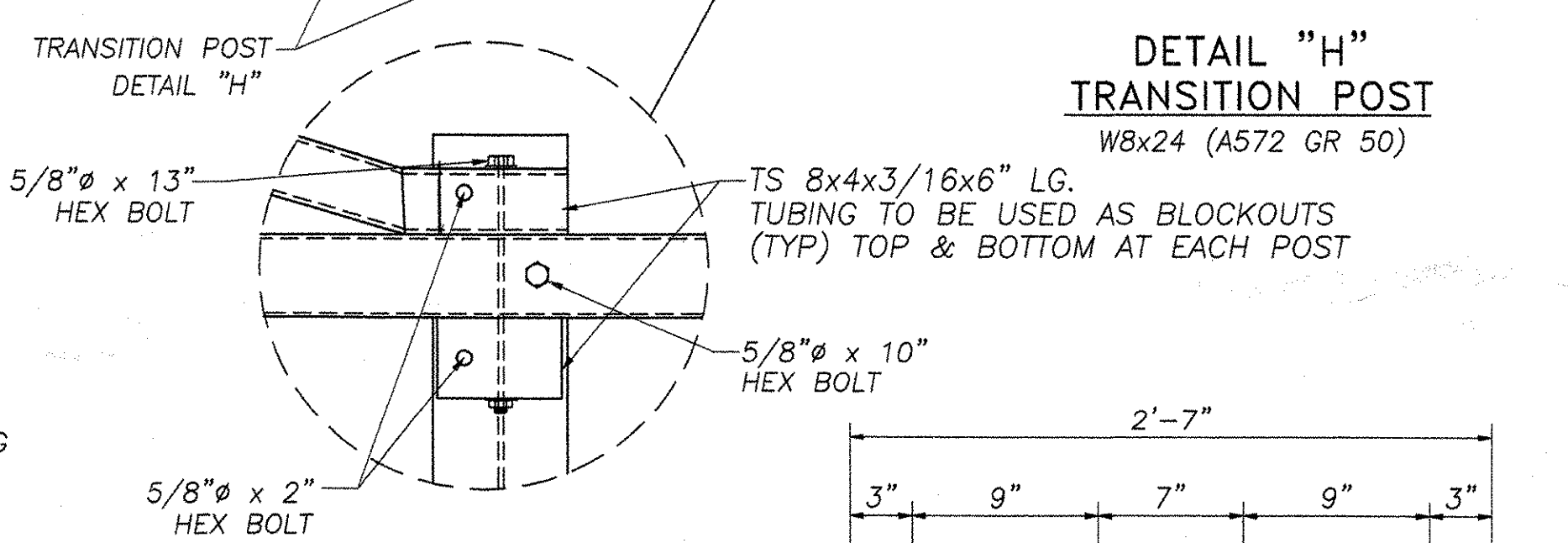
- GENERAL ERECTION NOTES**
1. Heavy duty steel beam guard rail shall conform to VT. specification 732. AASHTO M180 B2
 2. Structural steel tubing shall conform to VT. specification 732. ASTM A500 gr B
 3. Anchor bolts, nuts and washers shall be galvanized in accordance with AASHTO M 232 and shall conform to VT. specification 714 unless otherwise noted.
 4. Bridge rail posts, special washers, splice bars and plate washers shall conform to AASHTO M 223 / M 223M and shall be galvanized after fabrication in accordance with AASHTO M 111. Prior to galvanizing all corners and edges of steel plates, shapes, etc., shall be ground to a 1/16" radius.
 5. See standard drawing G-1 and G-1d for additional details concerning guard rail.
 6. See standard drawing SB-R6-B2 for approach rail details and for information relative to schedule I and schedule II. All approach rail shall be heavy duty steel beam guard rail. Also see Std. Dwg. SB-R6-B2 for handrail details (except end details) if hand rail is required.
 7. All posts shall be set normal to grade.
 8. Splices for the steel beam guard rail shall lap in the direction of traffic.
 9. See Standard drawing G-1 for details of delineators. A delineator shall be located at every fifth post. Payment shall be subsidiary to other items.
 10. A railing joint splice shall be provided at each superstructure expansion joint.
 11. All field cut or drilled areas shall be coated with zinc rich paint.
 12. For radii less than 950 feet, the steel tubing shall be shop bent to fit the applicable curve.
 13. The drop-weight tear test in section 732 shall not apply to the structural tubing on this standard.
 14. All bolts and related hardware shall conform to AASHTO M164 type 1 bolts, hot dipped or mechanically galvanized per specification.



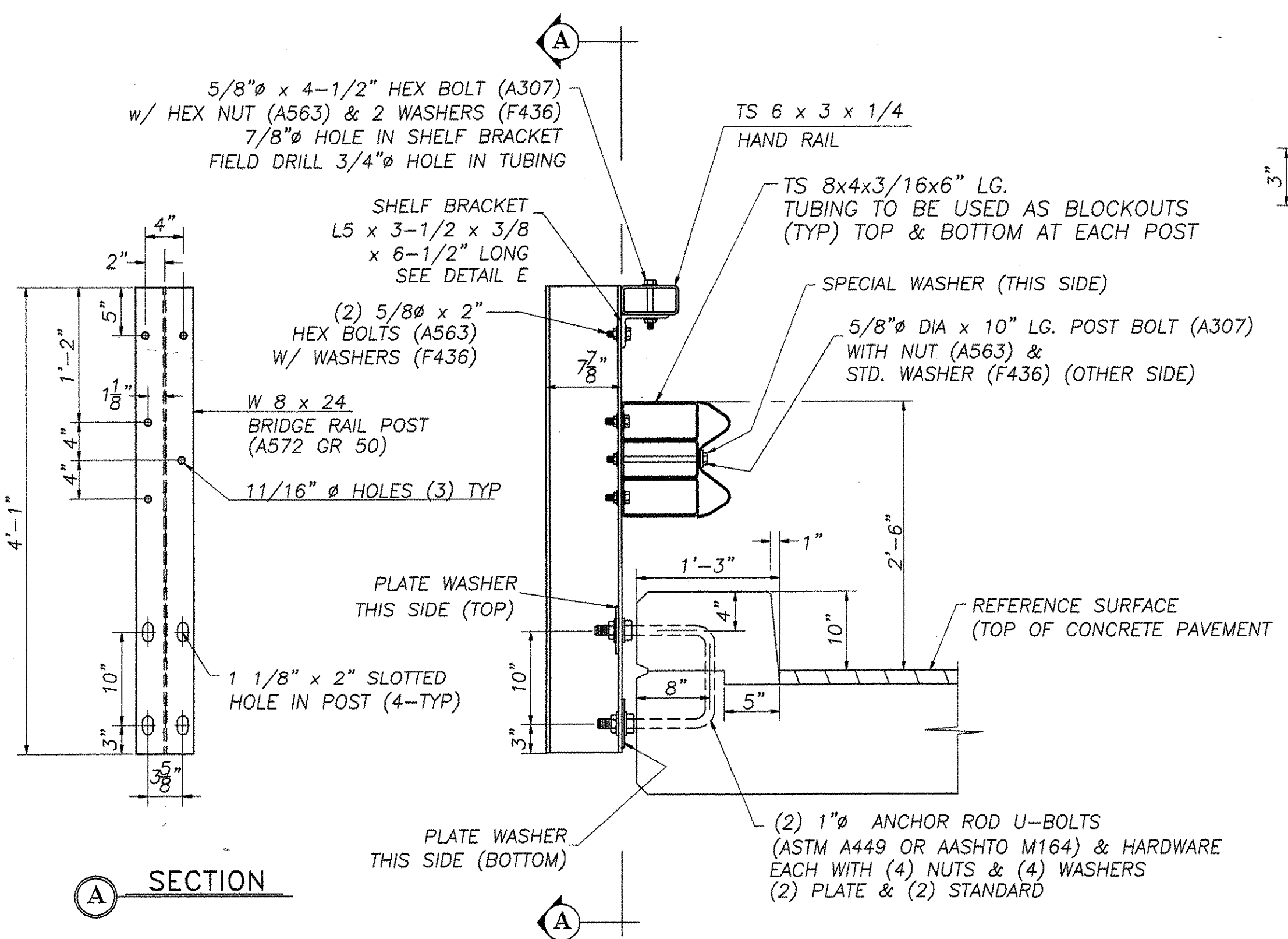
SECTION C



DETAIL "D"
STEEL BEAM GUARD RAIL NOT SHOWN

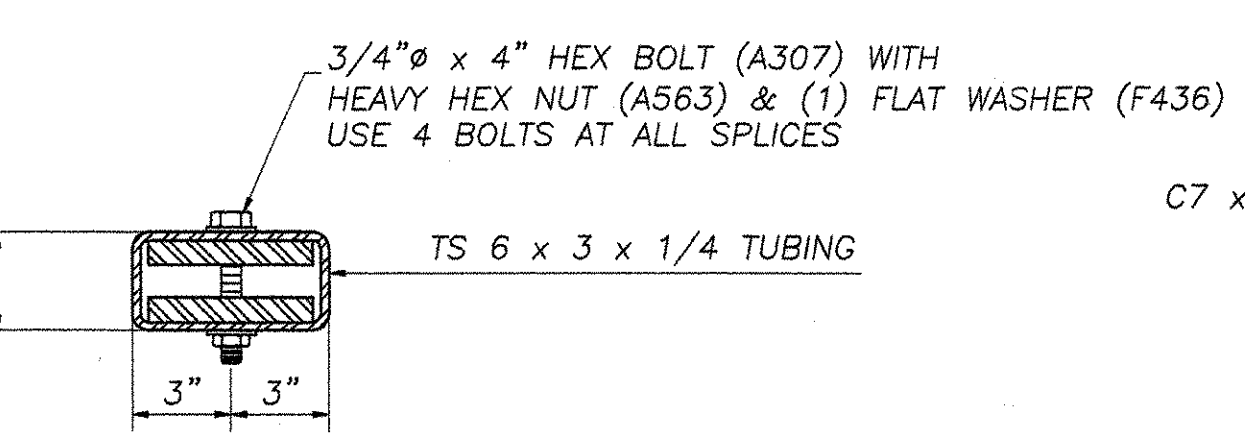


DETAIL "H"
TRANSITION POST
W8x24 (A572 GR 50)

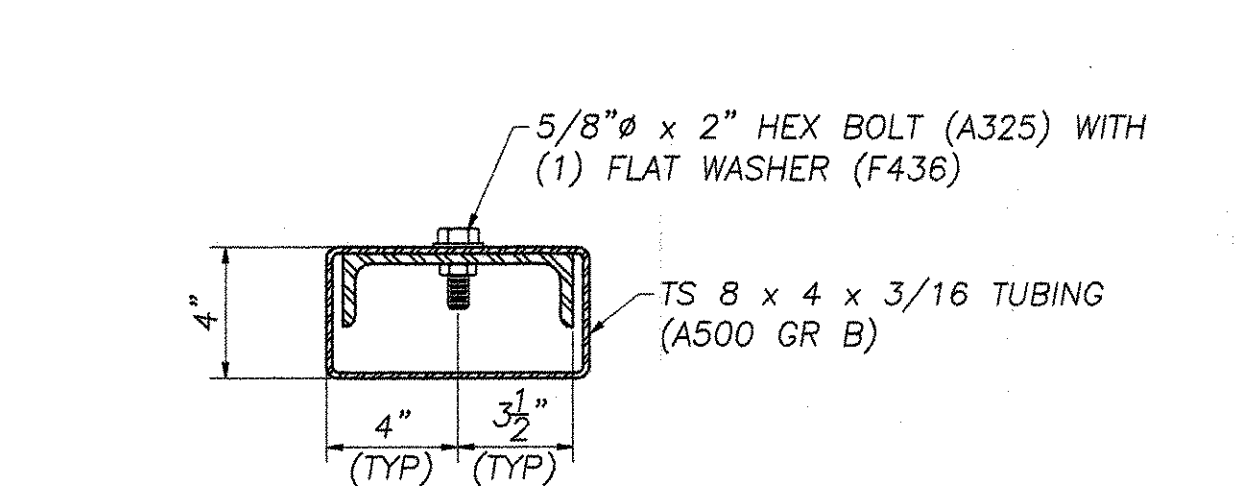


SECTION A

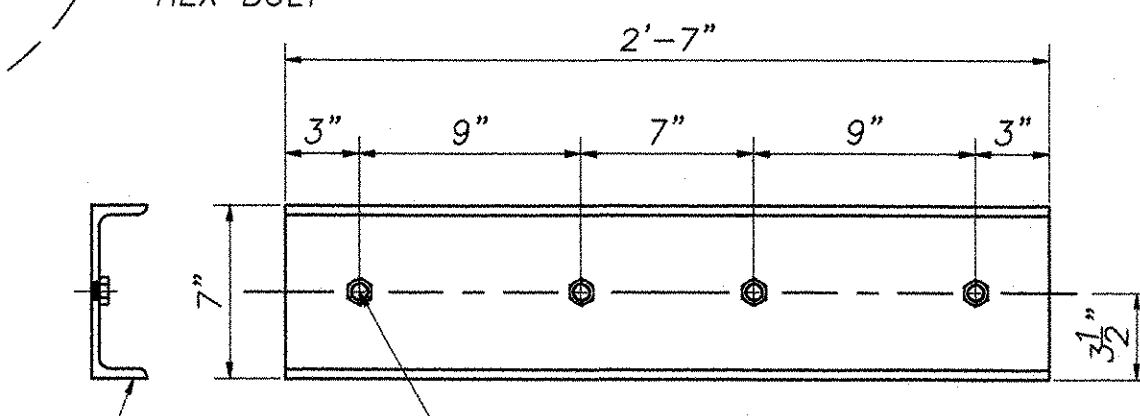
FASCIA MOUNTED POST WITH CURB
W 8 x 24 (A572 GR 50)



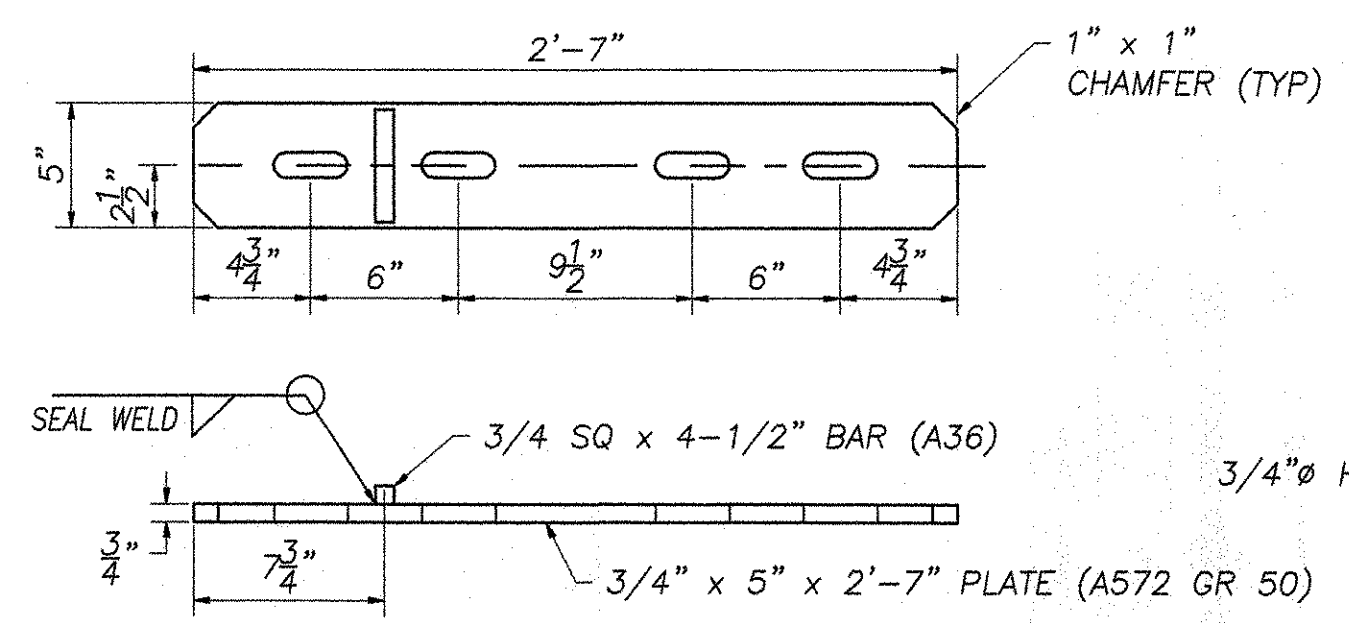
PARTIAL SECTION B
SHOWING HAND RAIL TUBE, BRIDGE RAIL TUBE & SPLICE BARS



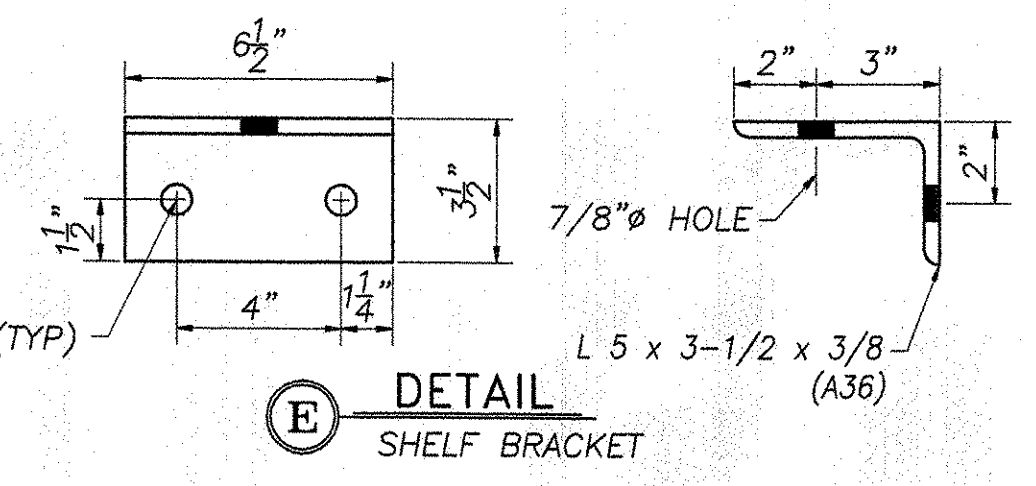
SPECIAL WASHER DETAIL



SPLICE BAR DETAIL



HAND RAIL SPLICE BAR DETAIL "G"



DETAIL E
SHELF BRACKET

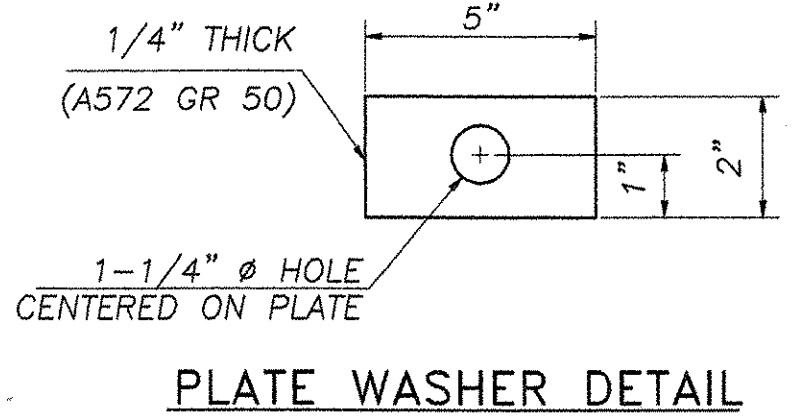


PLATE WASHER DETAIL

REVISIONS		
No.	Remarks	Date
0	Initial submittal	11/2/04

Reviewed
 Rejected

Furnish as Corrected
 Revise and Resubmit
 Submit Specified Item

The reviewer is only for general conformance with the design concept and the information given in the Construction Documents. Corrections or comments made on the shop drawings during this review do not relieve the contractor from compliance with the requirements of the plans and specifications. Review of a specific item shall not include review of an assembly of which the item is a component. The Contractor is responsible for dimensions to be confirmed and consistent at the job site. Information that pertains to the fabrication process or to the means, methods, techniques, sequences and procedures of construction, coordination of the work with that of all other trades and performing all work in a safe and satisfactory manner.

McFarland-Johnson, Inc.
Date: 2/16/04
By: SCM

HIGHWAY SAFETY CORP.
GLASTONBURY, CT

ITEM 525.43 STEEL BRIDGE RAIL - HDSB W/HANDRAIL
BRIDGE NO. 14 HIGHWAY NO. 6
TOWN OF WATERBURY, VERMONT
LOMMIS HILL ROAD OVER THATCHER BROOK
PROJECT NO. TH 3-9637

DRAWN: MHM
CHECKED: [Signature]
DATE: 10/15/03
SCALE: N.T.S.
HSC REFERENCE NO.: 1400
GENERAL CONTRACTOR: [Blank]
SUB CONTRACTOR: F.R. LAFAYETTE, INC.

SIZE: D
REVISION: 0
SHEET NO.: 024 RAIL
2 of 2