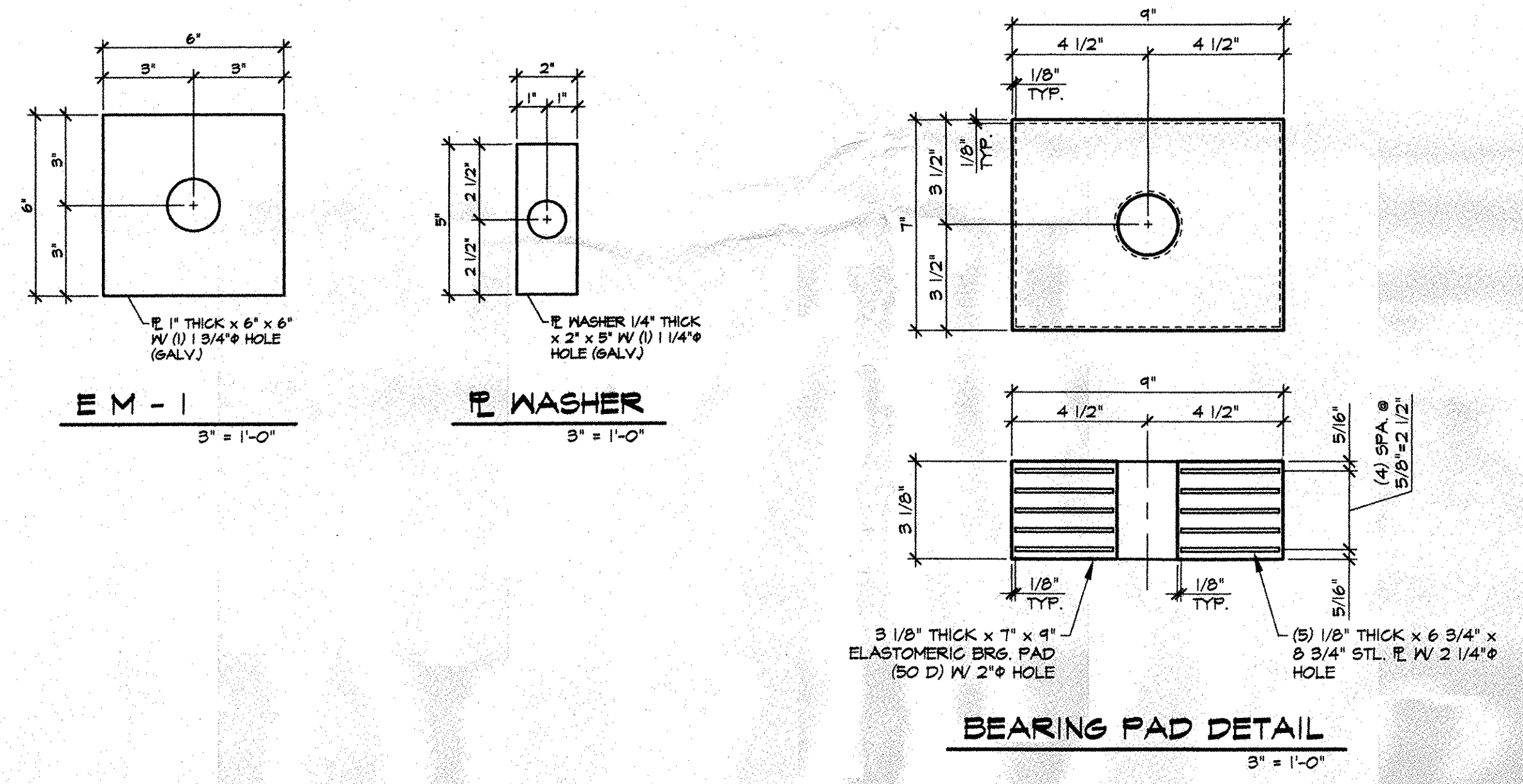
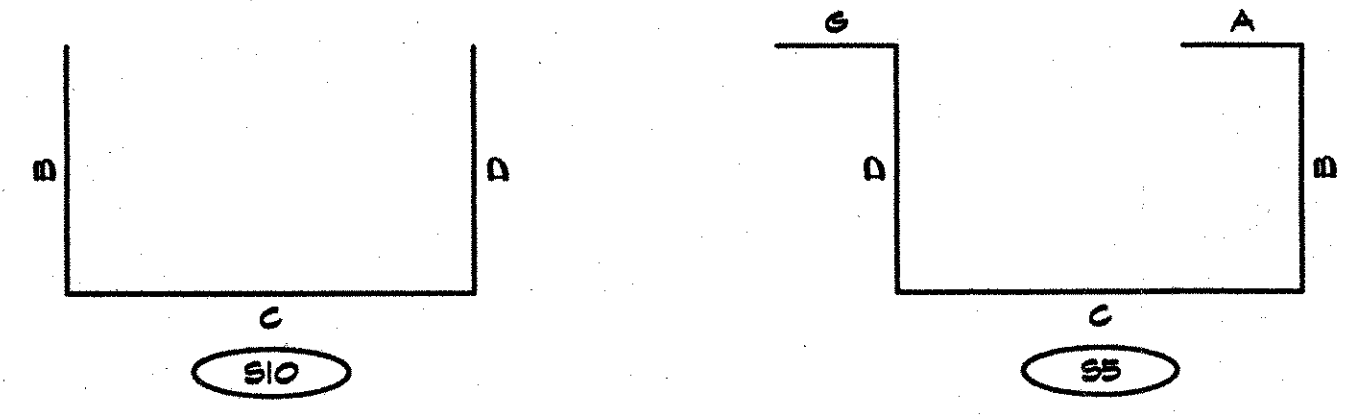


BENT BARS, TIES, & STIRRUPS

ITEM	MARK	QTY.	SIZE	LENGTH	TYPE	A	B	C	D	E	F/R	G	H	J	K	O	GRADE	REMARKS
1	401	528	#4	5'-6 1/2"	S/O		1'-0 1/2"	3'-7 1/2"	1'-0 1/2"								60	
2	402	48	#4	3'-1"	S/O		1'-0 1/2"	1'-2"	1'-0 1/2"								60	
3	403	84	#4	6'-10 1/2"	S/O		3'-0"	1'-0 1/2"	3'-0"								60	
4	404	36	#4	4'-4 1/4"	S/O		3'-0"	3'-6 1/4"	3'-0"								60	
5	405	12	#4	38'-8"	STR.												60	(2) 2'-0" STAG. LAP
6																		
7	501	142	#5	5'-4 1/2"	SS	6"	2'-2"	10"	2'-2"			6"					60	
8	502	4	#5	38'-8"	STR.												60	(2) 2'-6" STAG. LAP
9	503	12	#5	5'-4 1/2"	SS	6"	2'-2"	5"	2'-2"			6"					60	
10																		
11																		
12																		
13																		
14																		
15																		
16																		
17																		
18																		
19																		
20																		
21																		
22																		
23																		
24																		
25																		
26																		
27																		
28																		
29																		
30																		

MISCELLANEOUS MATERIALS

ITEM	MARK	QTY.	DESCRIPTION	REMARKS
1	EM-1	6	1/2" x 5" x 5" W/ (1) 2" HOLE (GALV)	FOR ERECTION, SEE DETAIL THIS SHEET
2		6	SINGLE USE STRESSING CHUCK	FOR ERECTION
3		3	1/2" x 26'-4" POLYSTRAND	FOR ERECTION
4		24	3 1/8" THICK x 7" x 9" ELASTOMERIC BRG. PAD (SO D) W/ (1) 2" HOLE	FOR ERECTION, SEE DETAIL THIS SHEET
5		24	#8 x 3'-1" ANCHOR DOWEL (EPOXY COATED)	FOR ERECTION
6				
7		48	1/4" x 2" x 5" W/ (1) 1/4" HOLE (GALV)	FOR ERECTION, SEE DETAIL THIS SHEET
8		48	1" x 5" A325 THEADED ROD (HOT DIPPED GALV)	FOR ERECTION
9		48	STANDARD WASHER (GALV)	FOR ERECTION
10		46	1" NUTS (GALV)	FOR ERECTION
11				
12		12	GUARD RAIL INSERT (MEADOW BURKE)	PRESET GALV. ANCHOR
13		32	10" x 15'-10" VOID	
14		64	3/4" x 4" NON-FERROUS VOID DRAIN	
15		24	DOUBLE 1/2" STRAND LIFTING LOOPS	
16				
17				
18				
19				
20				
21				
22				
23				
24				
25				
26				
27				
28				
29				
30				



J.P. CARRARA & SONS, INC.
 NOV 12 2003
 ISSUED FOR PRODUCTION

11-12-03 ISSUED FOR PRODUCTION

APPROVAL STAMP:
 Reviewed
 Rejected
 Furnish as Corrected
 Revise and Resubmit
 Submit Specified Item

This review is only for general conformance with the design concept, and the information given in the Construction Documents. Corrections or comments made on the shop drawings during this review do not relieve the contractor from compliance with the requirements of the plans and specifications. Review of a specific item shall not include review of an assembly of which the item is a component. The Contractor is responsible for dimensions to be confirmed and controlled at the job site. Information that pertains solely to the fabrication process or to the means, methods, techniques, sequence and procedures of construction, coordination of the Work with that of all other trades and performing at work in a safe and satisfactory manner.

McFarland-Johnson, Inc.
 Date: 11/25/03
 By: [Signature]

J.P. CARRARA & SONS, INC.
 Precast & Prestress Manufacturer
 244 OISE ST., WOODBURY, VERMONT 05753 Phone: (802)388-6361 Fax: (802)388-9010

R.C. CONTRACTORS
 CONTRACTOR
 GLOVER, VERMONT

STATE OF VERMONT
AGENCY OF TRANSPORTATION

TOWN OF WATERBURY
 TH 3-4637 LOOMIS HILL ROAD (T.H. 6, CLASS 3) BRIDGE NO. 14

DATE: JULY 18, 2003
 SCALE: NOTED
 CHKD: -- DFTM: BL.
 JOB NO: 23125-03
 DWG. NO: M1

MATERIALS LIST

