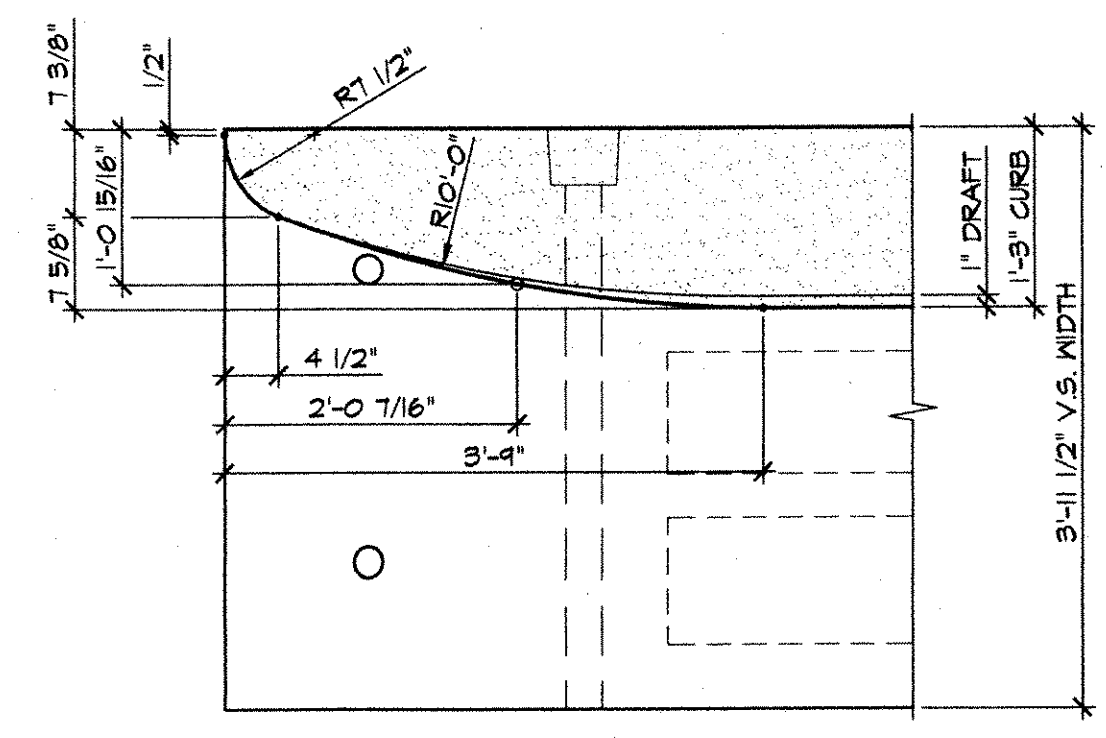
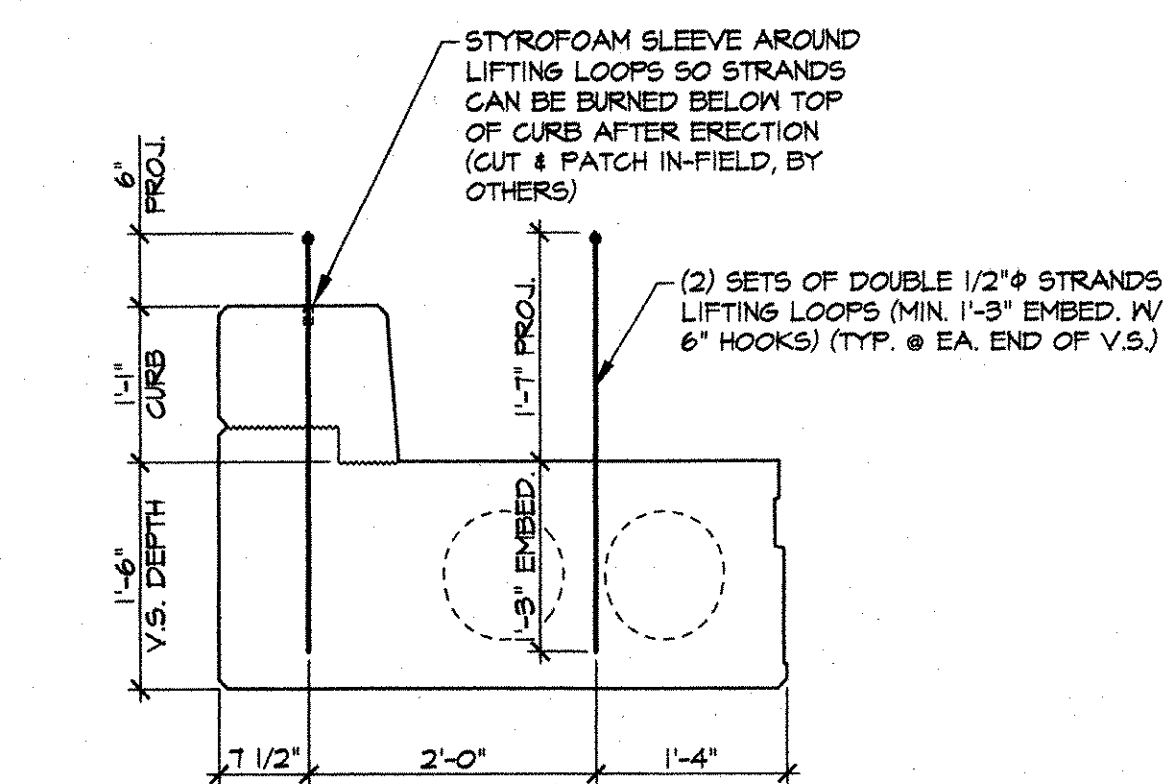


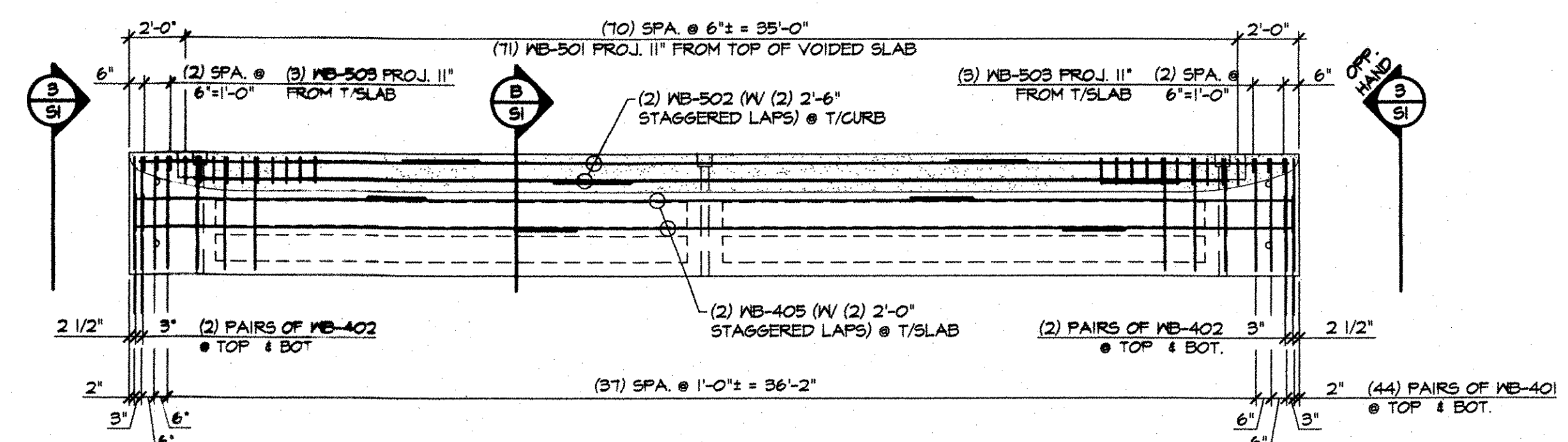
1 DIMENSIONAL PLAN VIEW IN FORM  
1/4" = 1'-0"



DETAIL - "B"  
3/4" = 1'-0"

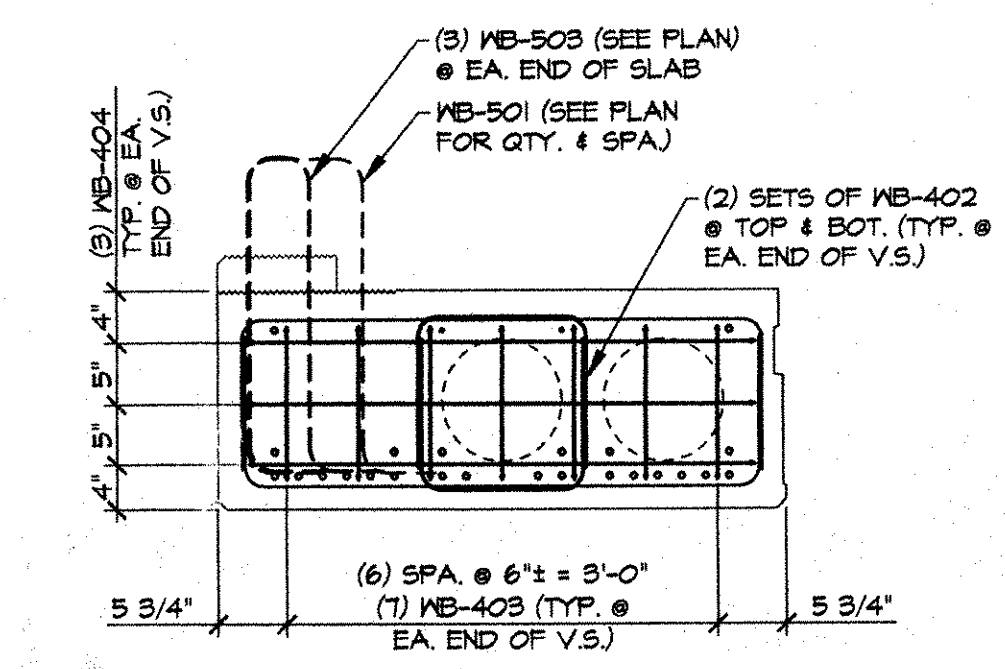


DETAIL - "C"  
3/4" = 1'-0"

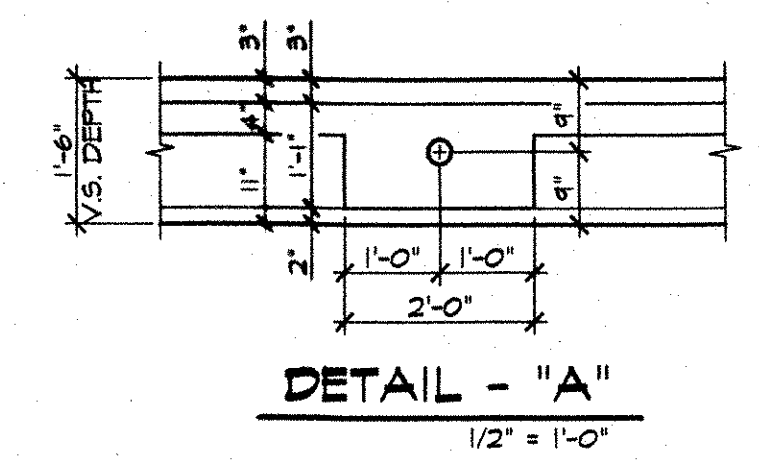


2 REINFORCING PLAN VIEW IN FORM  
1/4" = 1'-0"

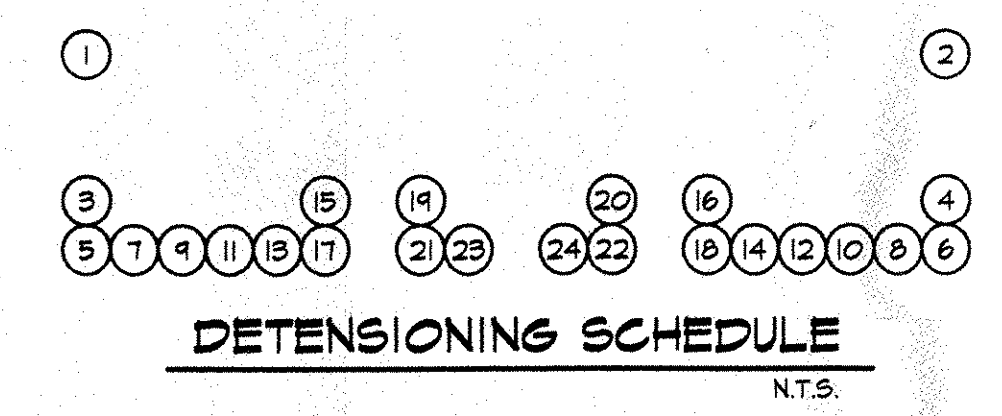
SHOP NOTE:  
ADJUST REINFORCING AS REQUIRED  
TO CLEAR P.T. DUCTS, SLEEVES, ETC.



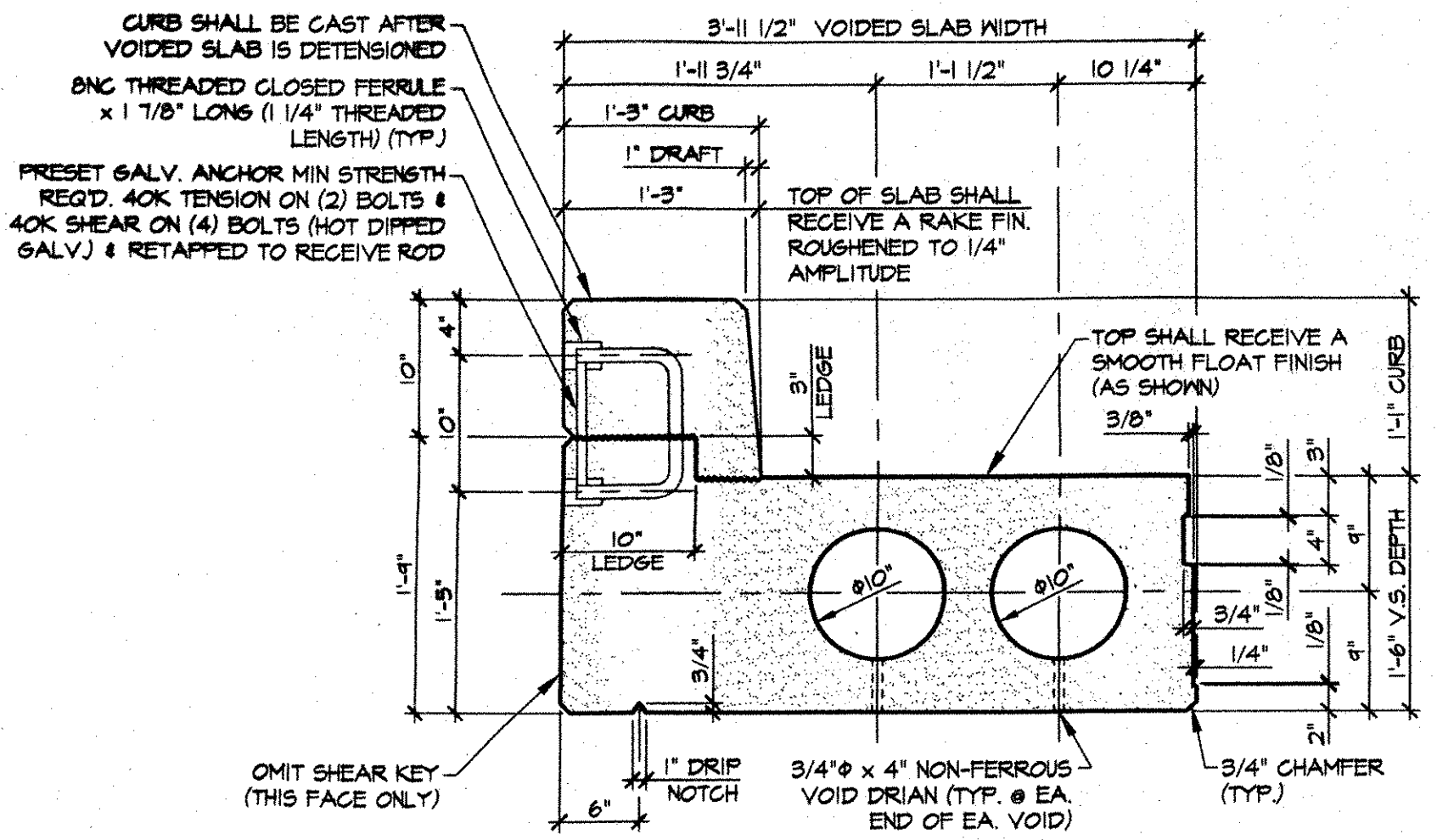
3 END BLOCK REINF. SECTION  
3/4" = 1'-0"



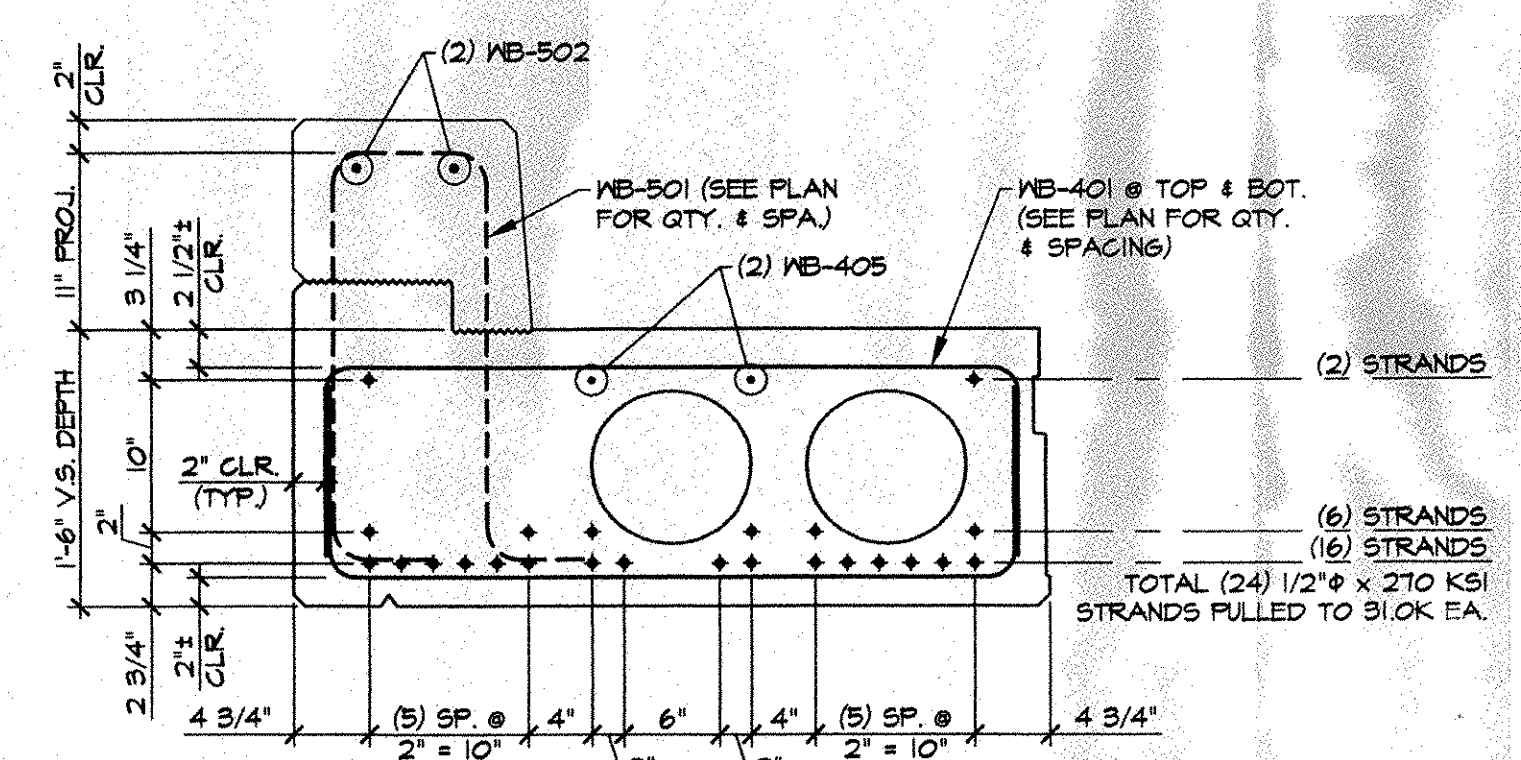
DETAIL - "A"  
1/2" = 1'-0"



DETENSIONING SCHEDULE  
N.T.S.



A DIMENSIONAL SECTION  
1" = 1'-0"



B REINFORCING SECTION  
1" = 1'-0"

MARK: MB-1	QTY.: 2	WT.: SLAB: 15.20 T CURB: 3.24 T TOTAL: 18.44 T	VOL.: SLAB: 7.50 cy CURB: 1.60 cy TOTAL: 9.10 cy
------------	---------	------------------------------------------------------	--------------------------------------------------------

MATERIAL LIST / SLAB			
ITEM	MARK	DESCRIPTION	QTY.
1	401	#4 BENT BAR	88
2	402	#4 BENT BAR	8
3	403	#4 BENT BAR	14
4	404	#4 BENT BAR	6
5	405	#4 CONTINUOUS BAR (W/ (2) 2'-0" STAGGERED LAP)	2
6			
7	501	#5 BENT BAR	71
8	502	#5 CONTINUOUS BAR (W/ (2) 2'-6" STAGGERED LAP)	2
9	503	#5 BENT BAR	6
10			
11			
12			
13			
14			
15			
16		GUARD RAIL INSERT (PRESET GALV. ANCHOR)	6
17		10" x 15'-10" VOID	2
18		3/4" x 4" NON-FERROUS VOID DRAIN	8
19		DOUBLE 1/2" STRAND LIFTING LOOPS	4
20			

J.P. CARRARA & SONS, INC.  
NOV 12 2003  
ISSUED FOR PRODUCTION

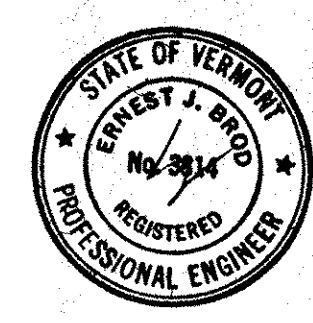
APPROVAL STAMP:

Reviewed  
 Revised and Resubmit  
 Submit Specified Item

Furnish as Corrected  
 Revise and Resubmit  
 Submit Specified Item

This review is only for general conformance with the design concept and the information given in the Construction Documents. Corrections or comments made on the shop drawings during this review do not relieve the contractor from compliance with the requirements of the plans and specifications. Review of a specific item shall not include review of an assembly of which the item is a component. The Contractor is responsible for dimensions to be confirmed and controlled at the job site. Information that pertains solely to the fabrication process or to the means, methods, techniques, sequences and procedures of construction; coordination of the Work with that of all other trades and performing all work in a safe and satisfactory manner.

McFarland-Johnson, Inc.  
Date: 11/25/03  
By: [Signature]



J.P. CARRARA & SONS INC.  
Precast & Prestress Manufacturer  
2464 CASE ST., WOODBURY, VERMONT 05753 Phone: (802)388-6361 Fax: (802)388-9010

R.C. CONTRACTORS  
CONTRACTOR  
GLOVER, VERMONT

STATE OF VERMONT  
AGENCY OF TRANSPORTATION

TOWN OF WATERBURY  
TH B-4687 LOOMIS HILL ROAD (T.H. 6, CLASS B) BRIDGE NO. 14

P/S VOIDED SLAB DETAILS

DATE: JULY 18, 2003  
SCALE: NOTED  
CHKD: -- DFTM: BL  
JOB NO: 23185-03  
DWG. NO: S1